

# TMEM27 Polyclonal Antibody

Product Details	
Size	100 µg
Species Reactivity	Mouse
Host/Isotype	Sheep / IgG
Class	Polyclonal
Type	Antibody
Conjugate	Unconjugated
Immunogen	Mouse myeloma cell line NS0-derived recombinant mouse Collectrin Glu15-Ile144
Form	Lyophilized
Concentration	0.2 mg/mL
Purification	Antigen affinity chromatography
Storage buffer	PBS with 5% trehalose
Contains	No Preservative
Storage conditions	-20° C, Avoid Freeze/Thaw Cycles
RRID	AB_2605557

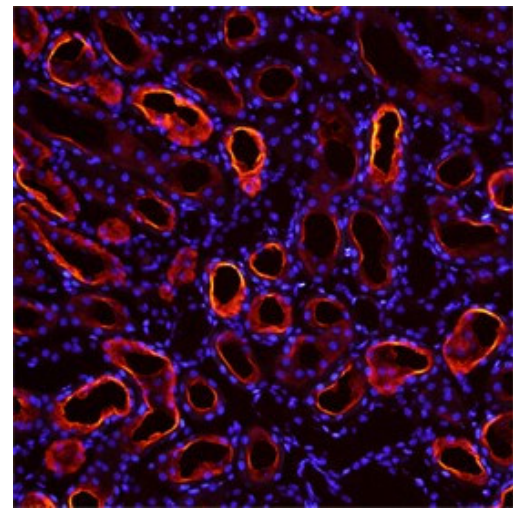
Applications	Tested Dilution	Publications
Western Blot (WB)	1-10 µg/mL	-
Immunohistochemistry (Frozen) (IHC (F))	5-15 µg/mL	-

## Product Specific Information

In direct ELISAs, approximately 40% cross-reactivity with recombinant human Collectrin is observed.

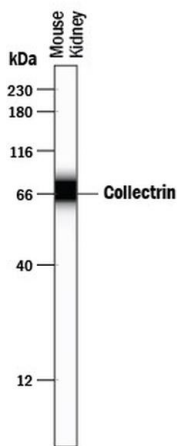
Reconstitute at 0.2 mg/mL in sterile PBS.

## Product Images For TMEM27 Polyclonal Antibody



**TMEM27 Antibody (PA5-47676) in IHC (F)**

Immunohistochemical analysis of TMEM27 in perfusion fixed frozen sections of mouse kidney. Samples were incubated with TMEM27 polyclonal antibody (Product # PA5-47676) using a dilution of 1.7 µg/mL overnight at 4 °C followed by NorthernLights™ 557-conjugated Anti-Sheep IgG Secondary Antibody (red) and counterstained with DAPI (blue). Specific staining was localized to convoluted tubules.

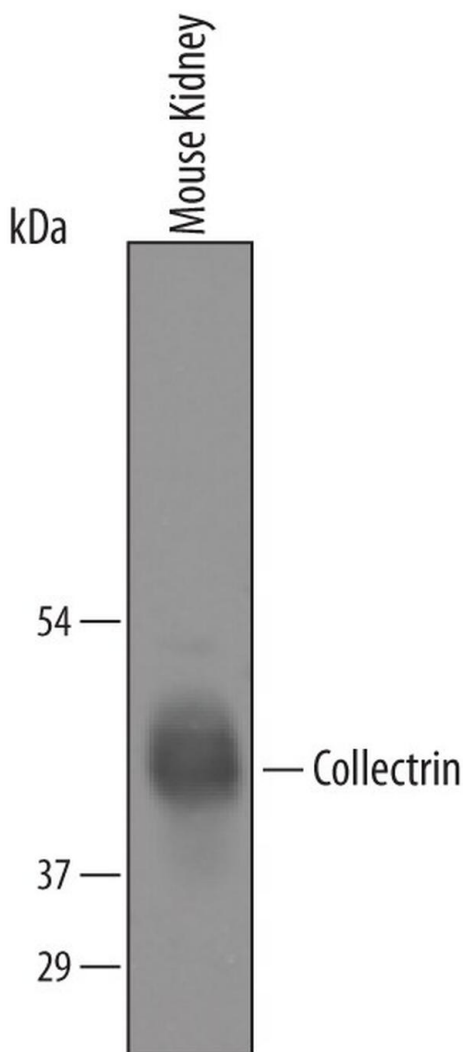


### TMEM27 Antibody (PA5-47676) in WB

Western blot analysis of TMEM27 in 0.2 mg/mL lysates of mouse kidney tissue. Samples were incubated in TMEM27 polyclonal antibody (Product # PA5-47676) using a dilution of 10 µg/mL followed by HRP-conjugated Anti-Sheep IgG at a dilution of 0.0763888888888889. A specific band was detected for Collectrin at approximately 69 kDa (as indicated). This experiment was conducted under reducing conditions and using the 12-230 kDa separation system.

### TMEM27 Antibody (PA5-47676) in WB

Western blot analysis of TMEM27 in mouse kidney tissue. Samples were incubated in TMEM27 polyclonal antibody (Product # PA5-47676) using a dilution of 1 µg/mL followed by a HRP-conjugated Anti-Sheep IgG secondary antibody. A specific band was detected for Collectrin at approximately 43 kDa (as indicated). This experiment was conducted under reducing conditions.



For Research Use Only. Not for use in diagnostic procedures. Not for resale without express authorization. Products are warranted to operate or perform substantially in conformance with published Product specifications in effect at the time of sale, as set forth in the Production documentation, specifications and/or accompanying package inserts ("Documentation"). No claim of suitability for use in applications regulated by FDA is made. The warranty provided herein is valid only when used by properly trained individuals. Unless otherwise stated in the Documentation, this warranty is limited to one year from date of shipment when the Product is subjected to normal, proper and intended usage. This warranty does not extend to anyone other than the Buyer. Any model or sample furnished to Buyer is merely illustrative of the general type and quality of goods and does not represent that any Product will conform to such model or sample. NO OTHER WARRANTIES, EXPRESS OR IMPLIED, ARE GRANTED INCLUDING WITHOUT LIMITATION, IMPLIED WARRANTIES OF MERCHANTABILITY, FITNESS FOR ANY PARTICULAR PURPOSE, OR NON-INFRINGEMENT. BUYER'S EXCLUSIVE REMEDY FOR NON-CONFORMING PRODUCTS DURING THE WARRANTY PERIOD IS LIMITED TO REPAIR, REPLACEMENT OF OR REFUND FOR THE NON-CONFORMING PRODUCT(S) AT SELLER'S SOLE OPTION. THERE IS NO OBLIGATION TO REPAIR, REPLACE OR REFUND FOR PRODUCTS AS THE RESULT OF (I) ACCIDENT, DISASTER OR EVENT OF FORCE MAJEURE, (II) MISUSE, FAULT OR NEGLIGENCE OF OR BY BUYER, (III) USE OF THE PRODUCTS IN A MANNER FOR WHICH THEY WERE NOT DESIGNED, OR (IV) IMPROPER STORAGE AND HANDLING OF THE PRODUCTS. Unless otherwise expressly stated on the Product or in the documentation accompanying the Product, the Product is intended for research only and is not to be used for any other purpose, including without limitation, unauthorized commercial uses, in vitro diagnostic uses, ex vivo or in vivo therapeutic uses, or any type of consumption by or application to human or animals.