

# CRTAC1 Polyclonal Antibody

## Product Details

Size	100 µg
Species Reactivity	Human
Host/Isotype	Sheep / IgG
Class	Polyclonal
Type	Antibody
Conjugate	Unconjugated
Immunogen	Mouse myeloma cell line NS0-derived recombinant human CRTAC1 Isoform 1 Ser28-Cys661
Form	Lyophilized
Concentration	0.2 mg/mL
Purification	Antigen affinity chromatography
Storage buffer	PBS with 5% trehalose
Contains	No Preservative
Storage Conditions	-20° C, Avoid Freeze/Thaw Cycles
RRID	AB_2577085

Applications	Tested Dilution	Publications
Western Blot (WB)	1-10 µg/mL	-

## Product Specific Information

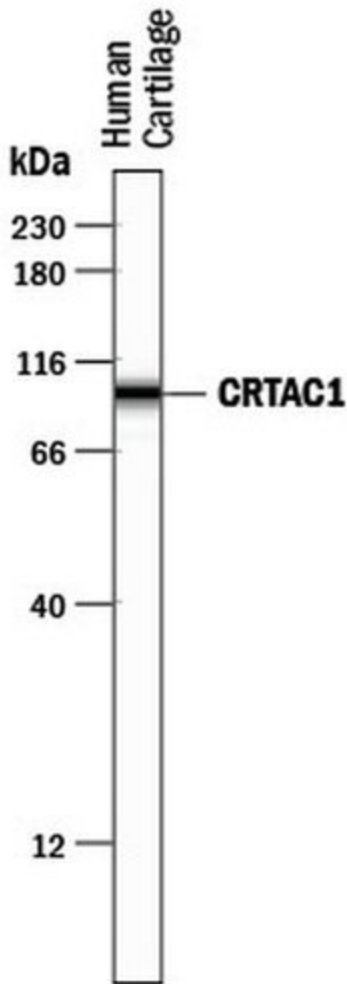
This antibody detects human CRTAC1 Isoform 1 in direct ELISAs and Western blots. In Western blots, approximately 10% cross-reactivity with recombinant human CRTAC1 Isoform 2 is observed.

Reconstitute at 0.2 mg/mL in sterile PBS.

## Product Images For CRTAC1 Polyclonal Antibody

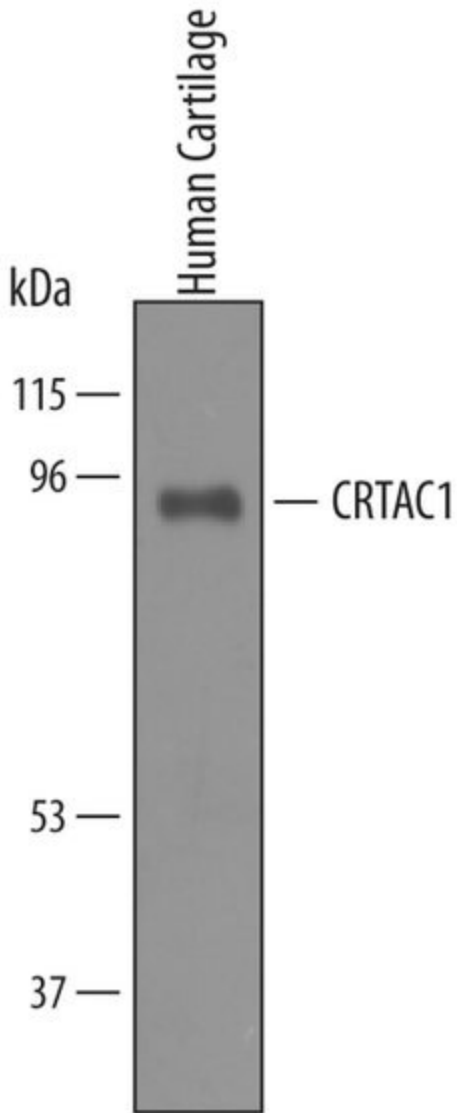
### CRTAC1 Antibody (PA5-47710) in WB

Western blot analysis from lysates of human cartilage tissue. PVDF membrane was probed with 1 µg/mL of Sheep Anti-human CRTAC1 Isoform 1 Antigen Affinity-purified Polyclonal Antibody (Product # PA5-47710) followed by HRP-conjugated Anti-Sheep IgG Secondary Antibody. A specific band was detected for CRTAC1 at approximately 95 kDa (as indicated). This experiment was conducted under reducing conditions.



### CRTAC1 Antibody (PA5-47710) in WB

Western blot analysis from lysates of human cartilage tissue. PVDF membrane was probed with 1 µg/mL of Sheep Anti-human CRTAC1 Isoform 1 Antigen Affinity-purified Polyclonal Antibody (Product # PA5-47710) followed by HRP-conjugated Anti-Sheep IgG Secondary Antibody. A specific band was detected for CRTAC1 at approximately 95 kDa (as indicated). This experiment was conducted under reducing conditions.



For Research Use Only. Not for use in diagnostic procedures. Not for resale without express authorization. Products are warranted to operate or perform substantially in conformance with published Product specifications in effect at the time of sale, as set forth in the Production documentation, specifications and/or accompanying package inserts ("Documentation"). No claim of suitability for use in applications regulated by FDA is made. The warranty provided herein is valid only when used by properly trained individuals. Unless otherwise stated in the Documentation, this warranty is limited to one year from date of shipment when the Product is subjected to normal, proper and intended usage. This warranty does not extend to anyone other than the Buyer. Any model or sample furnished to Buyer is merely illustrative of the general type and quality of goods and does not represent that any Product will conform to such model or sample. NO OTHER WARRANTIES, EXPRESS OR IMPLIED, ARE GRANTED INCLUDING WITHOUT LIMITATION, IMPLIED WARRANTIES OF MERCHANTABILITY, FITNESS FOR ANY PARTICULAR PURPOSE, OR NON INFRINGEMENT. BUYER'S EXCLUSIVE REMEDY FOR NON-CONFORMING PRODUCTS DURING THE WARRANTY PERIOD IS LIMITED TO REPAIR, REPLACEMENT OF OR REFUND FOR THE NON-CONFORMING PRODUCT(S) AT SELLER'S SOLE OPTION. THERE IS NO OBLIGATION TO REPAIR, REPLACE OR REFUND FOR PRODUCTS AS THE RESULT OF (I) ACCIDENT, DISASTER OR EVENT OF FORCE MAJEURE, (II) MISUSE, FAULT OR NEGLIGENCE OF OR BY BUYER, (III) USE OF THE PRODUCTS IN A MANNER FOR WHICH THEY WERE NOT DESIGNED, OR (IV) IMPROPER STORAGE AND HANDLING OF THE PRODUCTS. Unless otherwise expressly stated on the Product or in the documentation accompanying the Product, the Product is intended for research only and is not to be used for any other purpose, including without limitation, unauthorized commercial uses, in vitro diagnostic uses, ex vivo or in vivo therapeutic uses, or any type of consumption by or application to human or animals.