

WWTR1 Polyclonal Antibody

Product Details	
Size	100 µL
Species Reactivity	Human, Mouse
Host/Isotype	Rabbit / IgG
Class	Polyclonal
Type	Antibody
Conjugate	Unconjugated
Immunogen	Recombinant protein corresponding to Human WWTR1
Form	Liquid
Concentration	0.14 mg/mL
Purification	Antigen affinity chromatography
Storage buffer	PBS, pH 7.2, with 40% glycerol
Contains	0.02% sodium azide
Storage conditions	Store at 4°C short term. For long term storage, store at -20°C, avoiding freeze/thaw cycles.
RRID	AB_2649675

Applications	Tested Dilution	Publications
Western Blot (WB)	0.04-0.4 µg/mL	-
Immunohistochemistry (IHC)	1:200-1:500	-
Immunocytochemistry (ICC/IF)	0.25-2 µg/mL	-

Product Specific Information

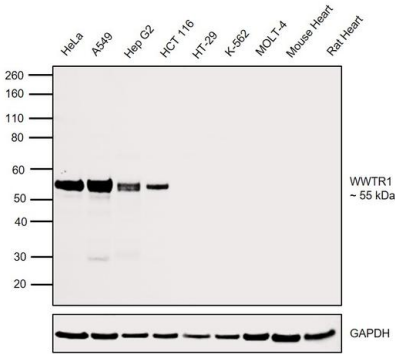
Immunogen sequence: MNPKPSSWRK KILPESFFKE PDSGSHSRQS STDSSGGHPG PRLAGGAQHV RSHSSPASLQ
 LGTGAGAAGS PAQQHAHLRQ QSYDVTDELP LPPGWEMTFT ATGQRYFLNH IEKITTWQDP RKAMNQPLNH
 MNLHPAVSST

Highest antigen sequence identity to the following orthologs: Mouse - 96%, Rat - 96%.

Product Images For WWTR1 Polyclonal Antibody

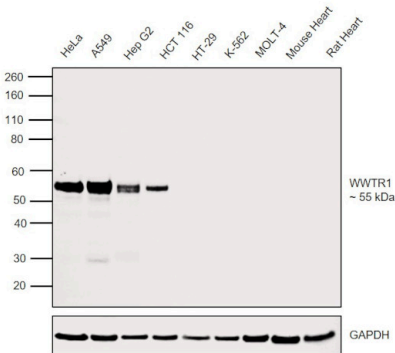
WWTR1 Antibody (PA5-52431) in WB

Western blot was performed using Anti-WWTR1 Polyclonal Antibody (Product # PA5-52431) and a 55kDa band corresponding to WWTR1 was observed across cell lines tested except HT-29, K-562 and MOLT-4. This product does not show any reactivity to Mouse and Rat tissues. Whole cell extracts (30 µg lysate) of HeLa (Lane 1), A549 (Lane 2), Hep G2 (Lane 3), HCT 116 (Lane 4), HT-29 (Lane 5), K-562 (Lane 6), MOLT-4 (Lane 7), Mouse Heart (Lane 8), Rat Heart (Lane 9) were electrophoresed using NuPAGE™ 4-12% Bis-Tris Protein Gel (Product # NP0322BOX). Resolved proteins were then transferred onto a Nitrocellulose membrane (Product # IB23001) by iBlot® 2 Dry Blotting System (Product # IB21001). The blot was probed with the primary antibody (0.4 µg/mL) and detected by chemiluminescence with Goat anti-Rabbit IgG (Heavy Chain) Superclonal™ Recombinant Secondary Antibody, HRP (Product # A27036, 1: 4000) using the iBright FL 1000 (Product # A32752). Chemiluminescent detection was performed using Novex® ECL Chemiluminescent Substrate Reagent Kit (Product # WP20005).



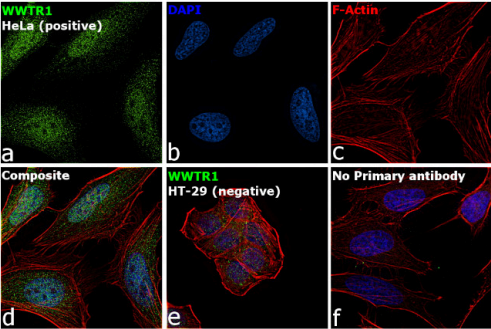
WWTR1 Antibody (PA5-52431)

Antibody specificity was demonstrated by detection of differential basal expression of the target across cell lines owing to their inherent genetic constitution. Relative expression of WWTR1 was observed in HeLa (Lane 1), A549 (Lane 2), Hep G2 (Lane 3), HCT 116 (Lane 4) cell lines that express WWTR1, in comparison to HT-29 (Lane 5), K-562 (Lane 6) and MOLT-4 (Lane 7) cell lines that are null for WWTR1 expression, using Anti-WWTR1 Polyclonal Antibody (Product # PA5-52431) in Western Blot. {RE}



WWTR1 Antibody (PA5-52431) in ICC/IF

Immunofluorescence analysis of WWTR1 was performed using 70% confluent log phase HeLa and HT-29 cells. The cells were fixed with 4% paraformaldehyde for 10 minutes, permeabilized with 0.1% Triton™ X-100 for 15 minutes, and blocked with 2% BSA for 45 minutes at room temperature. The cells were labeled with WWTR1 Polyclonal Antibody (Product # PA5-52431) at 1 µg/mL in 0.1% BSA, incubated at 4 degree celsius overnight and then labeled with Donkey anti-Rabbit IgG (H+L) Highly Cross-Adsorbed Secondary Antibody, Alexa Fluor Plus 488 (Product # A32790), (1:2000), for 45 minutes at room temperature (Panel a: Green). Nuclei (Panel b:Blue) were stained with ProLong™ Diamond Antifade Mountant with DAPI (Product # P36962). F-actin (Panel c: Red) was stained with Rhodamine Phalloidin (Product # R415, 1:300). Panel d represents the merged image of HeLa cells, which is a positive model for WWTR1 expression showing a nuclear and cytoplasmic localization. Panel e represents the merged image of HT-29 cells, that are null for WWTR1 protein expression. Panel f represents control cells with no primary antibody to assess background. The images were captured at 60X magnification.



View more figures on thermofisher.com

For Research Use Only. Not for use in diagnostic procedures. Not for resale without express authorization. Products are warranted to operate or perform substantially in conformance with published Product specifications in effect at the time of sale, as set forth in the Production documentation, specifications and/or accompanying package inserts ("Documentation"). No claim of suitability for use in applications regulated by FDA is made. The warranty provided herein is valid only when used by properly trained individuals. Unless otherwise stated in the Documentation, this warranty is limited to one year from date of shipment when the Product is subjected to normal, proper and intended usage. This warranty does not extend to anyone other than the Buyer. Any model or sample furnished to Buyer is merely illustrative of the general type and quality of goods and does not represent that any Product will conform to such model or sample. NO OTHER WARRANTIES, EXPRESS OR IMPLIED, ARE GRANTED INCLUDING WITHOUT LIMITATION, IMPLIED WARRANTIES OF MERCHANTABILITY, FITNESS FOR ANY PARTICULAR PURPOSE, OR NON INFRINGEMENT. BUYER'S EXCLUSIVE REMEDY FOR NON-CONFORMING PRODUCTS DURING THE WARRANTY PERIOD IS LIMITED TO REPAIR, REPLACEMENT OF OR REFUND FOR THE NON-CONFORMING PRODUCT(S) AT SELLER'S SOLE OPTION. THERE IS NO OBLIGATION TO REPAIR, REPLACE OR REFUND FOR PRODUCTS AS THE RESULT OF (I) ACCIDENT, DISASTER OR EVENT OF FORCE MAJEURE, (II) MISUSE, FAULT OR NEGLIGENCE OF OR BY BUYER, (III) USE OF THE PRODUCTS IN A MANNER FOR WHICH THEY WERE NOT DESIGNED, OR (IV) IMPROPER STORAGE AND HANDLING OF THE PRODUCTS. Unless otherwise expressly stated on the Product or in the documentation accompanying the Product, the Product is intended for research only and is not to be used for any other purpose, including without limitation, unauthorized commercial uses, in vitro diagnostic uses, ex vivo or in vivo therapeutic uses, or any type of consumption by or application to human or animals.