

PTGES2 Polyclonal Antibody

Product Details	
Size	100 µL
Species Reactivity	Human
Host/Isotype	Rabbit / IgG
Class	Polyclonal
Type	Antibody
Conjugate	Unconjugated
Immunogen	Recombinant Human PTGES2
Form	Liquid
Concentration	0.05 mg/mL
Purification	Antigen affinity chromatography
Storage buffer	PBS, pH 7.2, with 40% glycerol
Contains	0.02% sodium azide
Storage conditions	Store at 4°C short term. For long term storage, store at -20°C, avoiding freeze/thaw cycles.
RRID	AB_2664793

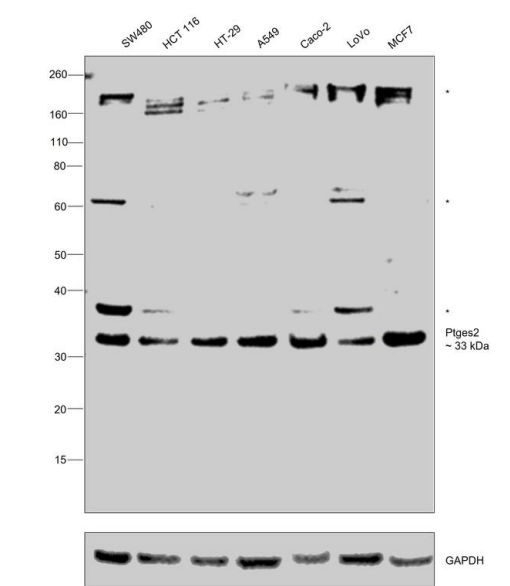
Applications	Tested Dilution	Publications
Western Blot (WB)	0.04-0.4 µg/mL	-
Immunohistochemistry (IHC)	1:50-1:200	-

Product Specific Information

Immunogen sequence: AQDLHAERSAA QLSLSSRLQL TLYQYKTCPF CSKVRAFLDF HALPYQVVEV NPVRRAEIKF SSYRKVPILV AQEGESSQ

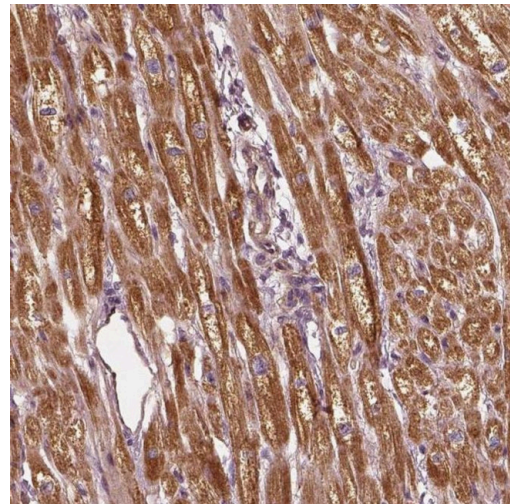
Highest antigen sequence identity to the following orthologs - mouse 89%, rat 91%.

Product Images For PTGES2 Polyclonal Antibody



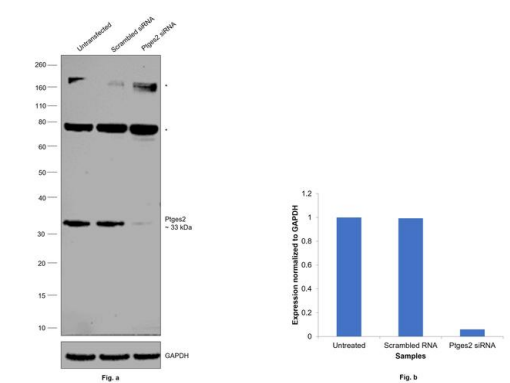
PTGES2 Antibody (PA5-64984) in WB

Western blot was performed using Anti-PTGES2 Polyclonal Antibody (Product # PA5-64984) and a 33 kDa band corresponding to Prostaglandin E synthase 2 was observed across all cell lysates tested. Membrane enriched extracts (30 µg lysate) of SW480 (Lane 1), HCT 116 (Lane 2), HT-29 (Lane 3), A549 (Lane 4), Caco-2 (Lane 5), LoVo (Lane 6) and MCF7 (Lane 7) were electrophoresed using NuPAGE™ 4-12% Bis-Tris Protein Gel (Product # NP0322BOX), 12 well. Resolved proteins were then transferred onto a nitrocellulose membrane (Product # IB23001) by iBlot® 2 Dry Blotting System (Product # IB21001). The blot was probed with the primary antibody (0.2 µg/mL) and detected by chemiluminescence with Goat anti-Rabbit IgG (Heavy Chain) Superclonal™ Recombinant Secondary Antibody, HRP (Product # A27036, 1:20,000 dilution) using the iBright™ FL1500 Imaging System (Product # A44115). Chemiluminescent detection was performed using SuperSignal™ West Atto Ultimate Sensitivity Substrate (Product # A38556). Uncharacterized bands (*) were observed at ~38 kDa, ~62 kDa in some cell lysates and all cell lysates displayed an uncharacterized band (*) at ~180 kDa.



PTGES2 Antibody (PA5-64984) in IHC

Immunohistochemical staining of PTGES2 in human heart muscle shows strong cytoplasmic positivity in myocytes. Samples were probed using a PTGES2 Polyclonal Antibody (Product # PA5-64984).



PTGES2 Antibody (PA5-64984) in WB

Knockdown of Prostaglandin E synthase 2 was achieved by transfecting SW480 with Prostaglandin E synthase 2 specific siRNAs (Silencer® select Product # S36951, S36953). Western blot analysis (Fig. a) was performed using Membrane enriched extracts from Prostaglandin E synthase 2 knockdown cells (lane 3), non-targeting scrambled siRNA transfected cells (lane 2) and untransfected cells (lane 1). The blot was probed with PTGES2 Polyclonal Antibody (Product # PA5-64984, 0.2 µg/mL) and Goat anti-Rabbit IgG (Heavy Chain) Superclonal™ Recombinant Secondary Antibody, HRP (Product # A27036, 1:20,000 dilution). Densitometric analysis of this western blot is shown in histogram (Fig. b). Decrease in signal upon siRNA mediated knock down confirms that antibody is specific to Prostaglandin E synthase 2. Uncharacterized bands (*) were observed at ~80 kDa and ~180 kDa in all the lysates.

View more figures on thermofisher.com

For Research Use Only. Not for use in diagnostic procedures. Not for resale without express authorization. Products are warranted to operate or perform substantially in conformance with published Product specifications in effect at the time of sale, as set forth in the Production documentation, specifications and/or accompanying package inserts ("Documentation"). No claim of suitability for use in applications regulated by FDA is made. The warranty provided herein is valid only when used by properly trained individuals. Unless otherwise stated in the Documentation, this warranty is limited to one year from date of shipment when the Product is subjected to normal, proper and intended usage. This warranty does not extend to anyone other than the Buyer. Any model or sample furnished to Buyer is merely illustrative of the general type and quality of goods and does not represent that any Product will conform to such model or sample. NO OTHER WARRANTIES, EXPRESS OR IMPLIED, ARE GRANTED INCLUDING WITHOUT LIMITATION, IMPLIED WARRANTIES OF MERCHANTABILITY, FITNESS FOR ANY PARTICULAR PURPOSE, OR NON-INFRINGEMENT. BUYER'S EXCLUSIVE REMEDY FOR NON-CONFORMING PRODUCTS DURING THE WARRANTY PERIOD IS LIMITED TO REPAIR, REPLACEMENT OF OR REFUND FOR THE NON-CONFORMING PRODUCT(S) AT SELLER'S SOLE OPTION. THERE IS NO OBLIGATION TO REPAIR, REPLACE OR REFUND FOR PRODUCTS AS THE RESULT OF (i) ACCIDENT, DISASTER OR EVENT OF FORCE MAJEURE, (ii) MISUSE, FAULT OR NEGLIGENCE OF OR BY BUYER, (iii) USE OF THE PRODUCTS IN A MANNER FOR WHICH THEY WERE NOT DESIGNED, OR (iv) IMPROPER STORAGE AND HANDLING OF THE PRODUCTS. Unless otherwise expressly stated on the Product or in the documentation accompanying the Product, the Product is intended for research only and is not to be used for any other purpose, including without limitation, unauthorized commercial uses, in vitro diagnostic uses, ex vivo or in vivo therapeutic uses, or any type of consumption by or application to human or animals.