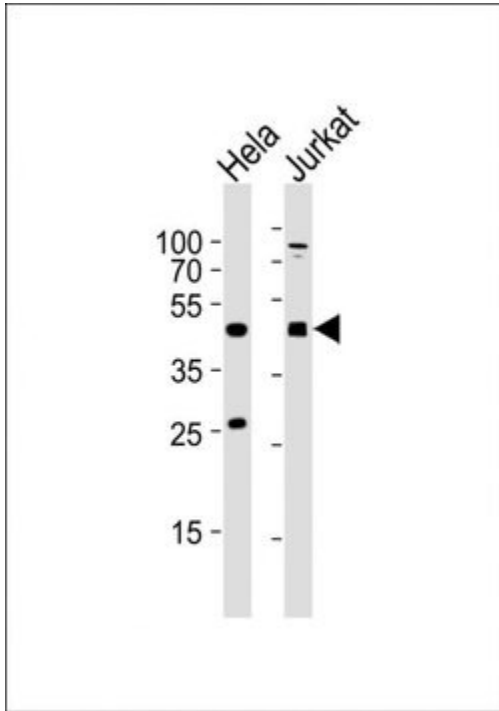


# AVPR2 Polyclonal Antibody

| Product Details    |  |
|--------------------|--|
| Size               | 400 µL   |
| Species            | Human  |
| Expression System  | Rabbit / IgG   |
| Class              | Polyclonal   |
| Type               | Antibody   |
| Conjugate          | Unconjugated   |
| Immunogen          | KLH conjugated synthetic peptide between 343-377 amino acids from the C-terminal region of human AVPR2 |
| Form               | Liquid   |
| Concentration      | 0.5 mg/mL  |
| Purification       | Protein A  |
| Storage buffer     | PBS  |
| Contains           | 0.09% sodium azide   |
| Storage Conditions | Store at 4°C short term. For long term storage, store at -20°C, avoiding freeze/thaw cycles.           |
| RRID               | AB_2718075   |

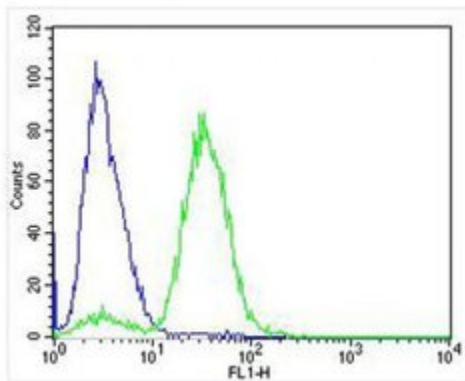
| Applications          | Tested Dilution | Publications |
|-----------------------|-----------------|--------------|
| Flow Cytometry (Flow) | 1:25            | -            |
| Western Blot (WB)     | 1:1000          | -            |

## Product Images For AVPR2 Polyclonal Antibody



### AVPR2 Antibody (PA5-72221) in WB

Western blot analysis of AVPR2 in the following samples: Lane 1: HeLa cell lysate, Lane 2: Jurkat cell lysate. 20 µg of protein per lane was used. Samples were first blocked with 5% NFDN/TBST, incubated with AVPR2 polyclonal antibody (Product # PA5-72221) using a dilution of 1:2000 followed by a goat anti-rabbit IgG H and L (HRP) secondary antibody with a dilution of 1:10,000.



### AVPR2 Antibody (PA5-72221) in Flow

Flow cytometry analysis of AVPR2 in Jurkat cells (green). The cells were fixed with 4% paraformaldehyde (10 min) and permeabilized with 90% methanol (10 min). The sample was then incubated with 2% BSA followed by a AVPR2 polyclonal antibody (Product # PA5-72221) using a dilution of 1:25 for 60 min at 37°C. The secondary antibody used was with a dilution of 1:400 for 40 min at 37°C. Isotype control antibody (blue line) was rabbit IgG (1 µg/1x10<sup>6</sup> cells) used under the same conditions with an acquisition of >10, 000 events.

For Research Use Only. Not for use in diagnostic procedures. Not for resale without express authorization. Products are warranted to operate or perform substantially in conformance with published Product specifications in effect at the time of sale, as set forth in the Production documentation, specifications and/or accompanying package inserts ("Documentation"). No claim of suitability for use in applications regulated by FDA is made. The warranty provided herein is valid only when used by properly trained individuals. Unless otherwise stated in the Documentation, this warranty is limited to one year from date of shipment when the Product is subjected to normal, proper and intended usage. This warranty does not extend to anyone other than the Buyer. Any model or sample furnished to Buyer is merely illustrative of the general type and quality of goods and does not represent that any Product will conform to such model or sample. NO OTHER WARRANTIES, EXPRESS OR IMPLIED, ARE GRANTED INCLUDING WITHOUT LIMITATION, IMPLIED WARRANTIES OF MERCHANTABILITY, FITNESS FOR ANY PARTICULAR PURPOSE, OR NON INFRINGEMENT. BUYER'S EXCLUSIVE REMEDY FOR NON-CONFORMING PRODUCTS DURING THE WARRANTY PERIOD IS LIMITED TO REPAIR, REPLACEMENT OF OR REFUND FOR THE NON-CONFORMING PRODUCT(S) AT SELLER'S SOLE OPTION. THERE IS NO OBLIGATION TO REPAIR, REPLACE OR REFUND FOR PRODUCTS AS THE RESULT OF (I) ACCIDENT, DISASTER OR EVENT OF FORCE MAJEURE, (II) MISUSE, FAULT OR NEGLIGENCE OF OR BY BUYER, (III) USE OF THE PRODUCTS IN A MANNER FOR WHICH THEY WERE NOT DESIGNED, OR (IV) IMPROPER STORAGE AND HANDLING OF THE PRODUCTS. Unless otherwise expressly stated on the Product or in the documentation accompanying the Product, the Product is intended for research only and is not to be used for any other purpose, including without limitation, unauthorized commercial uses, in vitro diagnostic uses, ex vivo or in vivo therapeutic uses, or any type of consumption by or application to human or animals.