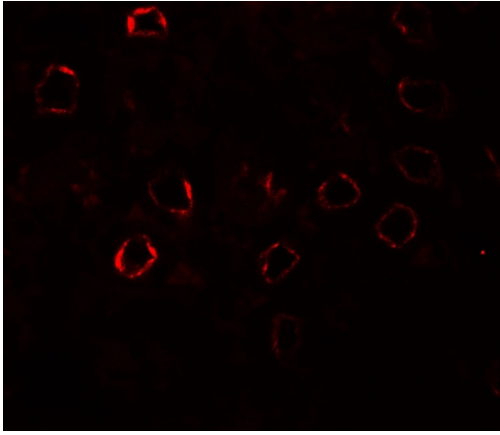


KIRREL3 Polyclonal Antibody

Product Details	
Size	100 µg
Species Reactivity	Human, Mouse, Rat
Host/Isotope	Rabbit / IgG
Class	Polyclonal
Type	Antibody
Conjugate	Unconjugated
Immunogen	KIRREL3 antibody for a 19 amino acid peptide near the amino terminus of human KIRREL3. The immunogen is within amino acids 20 - 70 of KIRREL3.
Form	Liquid
Concentration	1 mg/mL
Purification	Affinity chromatography
Storage buffer	PBS
Contains	0.02% sodium azide
Storage Conditions	Store at 4°C short term. For long term storage, store at -20°C, avoiding freeze/thaw cycles.
RRID	AB_2718678

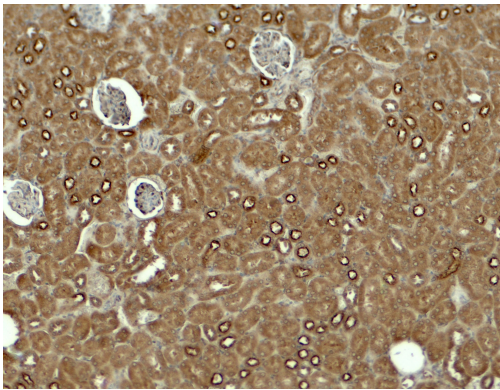
Applications	Tested	Dilution	Published
ELISA (ELISA)	✓	Assay-Dependent	
Immunocytochemistry (ICC)	✓	Assay-Dependent	
Immunofluorescence (IF)	✓	20 µg/mL	
Immunohistochemistry (Paraffin) (IHC (P))	✓	5 µg/mL	
Western Blot (WB)	✓	1.0-2.0 µg/mL	

Product Images For KIRREL3 Polyclonal Antibody



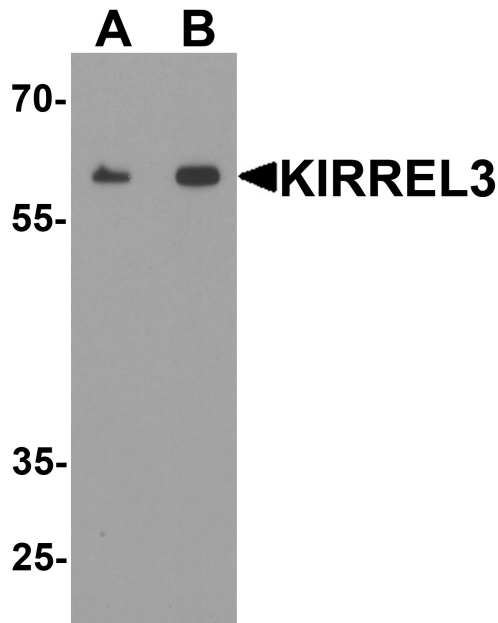
KIRREL3 Antibody (PA5-72824) in IF

Immunocytochemistry analysis of KIRREL3 in mouse kidney cells. The samples were probed with a KIRREL3 polyclonal antibody (Product # PA5-72824) at a dilution of 20 $\mu\text{g}/\text{mL}$.



KIRREL3 Antibody (PA5-72824) in IHC (P)

Immunohistochemistry was performed on paraffin-embedded mouse kidney tissue. The sample was probed with KIRREL3 polyclonal antibody (Product # PA5-72824) with a dilution of 5 $\mu\text{g}/\text{mL}$.



KIRREL3 Antibody (PA5-72824) in WB

Western blot analysis of KIRREL3 in mouse kidney tissue lysate using KIRREL3 polyclonal antibody (Product # PA5-72824) at a dilution of (A) 1 and (B) 2 $\mu\text{g}/\text{mL}$.

For Research Use Only. Not for use in diagnostic procedures. Not for resale without express authorization. Products are warranted to operate or perform substantially in conformance with published Product specifications in effect at the time of sale, as set forth in the Production documentation, specifications and/or accompanying package inserts ("Documentation"). No claim of suitability for use in applications regulated by FDA is made. The warranty provided herein is valid only when used by properly trained individuals. Unless otherwise stated in the Documentation, this warranty is limited to one year from date of shipment when the Product is subjected to normal, proper and intended usage. This warranty does not extend to anyone other than the Buyer. Any model or sample furnished to Buyer is merely illustrative of the general type and quality of goods and does not represent that any Product will conform to such model or sample. NO OTHER WARRANTIES, EXPRESS OR IMPLIED, ARE GRANTED INCLUDING WITHOUT LIMITATION, IMPLIED WARRANTIES OF MERCHANTABILITY, FITNESS FOR ANY PARTICULAR PURPOSE, OR NON-INFRINGEMENT. BUYER'S EXCLUSIVE REMEDY FOR NON-CONFORMING PRODUCTS DURING THE WARRANTY PERIOD IS LIMITED TO REPAIR, REPLACEMENT OF OR REFUND FOR THE NON-CONFORMING PRODUCT(S) AT SELLER'S SOLE OPTION. THERE IS NO OBLIGATION TO REPAIR, REPLACE OR REFUND FOR PRODUCTS AS THE RESULT OF (I) ACCIDENT, DISASTER OR EVENT OF FORCE MAJEURE, (II) MISUSE, FAULT OR NEGLIGENCE OF OR BY BUYER, (III) USE OF THE PRODUCTS IN A MANNER FOR WHICH THEY WERE NOT DESIGNED, OR (IV) IMPROPER STORAGE AND HANDLING OF THE PRODUCTS. Unless otherwise expressly stated on the Product or in the documentation accompanying the Product, the Product is intended for research only and is not to be used for any other purpose, including without limitation, unauthorized commercial uses, in vitro diagnostic uses, ex vivo or in vivo therapeutic uses, or any type of consumption by or application to human or animals.