

HSPE1 Polyclonal Antibody

Product Details	
Size	100 µg
Species Reactivity	Bovine, Dog, Guinea pig, Human, Mouse, Pig, Rabbit, Rat, Xenopus
Host/Isotype	Rabbit / IgG
Class	Polyclonal
Type	Antibody
Conjugate	Unconjugated
Immunogen	Human Cpn10 peptide AA 91-101
Form	Liquid
Concentration	1 mg/mL
Purification	Protein A
Storage buffer	PBS, pH 7.3
Contains	0.02% sodium azide
Storage conditions	-20°C
RRID	AB_2735932

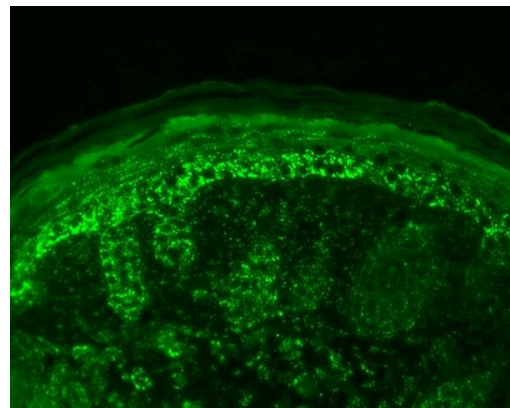
Applications	Tested Dilution	Publications
Western Blot (WB)	1:1,000	-
Immunohistochemistry (PFA fixed) (IHC (PFA))	1:50	-
Immunocytochemistry (ICC/IF)	Assay-Dependent	-
ELISA (ELISA)	Assay-Dependent	-
Immunoprecipitation (IP)	1:100	-

Product Specific Information

Immunohistochemistry samples may be prepared using Bouin's Fixative solution.

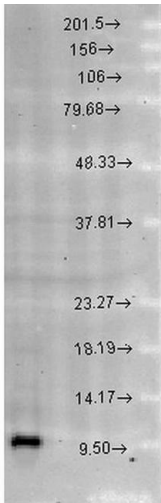
1 µg/mL of PA5-77824 was sufficient for detection of Cpn10 in 10 µg of Hela lysates by colorimetric immunoblot analysis using Goat anti-rabbit IgG:HRP as the secondary antibody. | Detects approximately 10kDa.

Product Images For HSPE1 Polyclonal Antibody



HSPE1 Antibody (PA5-77824) in IHC

Immunohistochemistry analysis of HSPE1 in mouse back skin. Samples were incubated with HSPE1 polyclonal antibody (Product # PA5-77824) using a dilution of 1:100 (1 hour at RT) and followed by FITC Goat Anti-Rabbit (green) at a dilution of 1:50 (1 hour at RT).



HSPE1 Antibody (PA5-77824) in WB

Western blot analysis of HSPE1 in rat brain cell lysates with 15 µg of sample. The sample was blocked with 1.5% BSA, incubated with HSPE1 polyclonal antibody (Product # PA5-77824) using a dilution of 1:1000 (2 hours at 4°C), followed by Donkey Anti-Rabbit HRP (1 hour at RT).

For Research Use Only. Not for use in diagnostic procedures. Not for resale without express authorization. Products are warranted to operate or perform substantially in conformance with published Product specifications in effect at the time of sale, as set forth in the Production documentation, specifications and/or accompanying package inserts ("Documentation"). No claim of suitability for use in applications regulated by FDA is made. The warranty provided herein is valid only when used by properly trained individuals. Unless otherwise stated in the Documentation, this warranty is limited to one year from date of shipment when the Product is subjected to normal, proper and intended usage. This warranty does not extend to anyone other than the Buyer. Any model or sample furnished to Buyer is merely illustrative of the general type and quality of goods and does not represent that any Product will conform to such model or sample. NO OTHER WARRANTIES, EXPRESS OR IMPLIED, ARE GRANTED INCLUDING WITHOUT LIMITATION, IMPLIED WARRANTIES OF MERCHANTABILITY, FITNESS FOR ANY PARTICULAR PURPOSE, OR NON INFRINGEMENT. BUYER'S EXCLUSIVE REMEDY FOR NON-CONFORMING PRODUCTS DURING THE WARRANTY PERIOD IS LIMITED TO REPAIR, REPLACEMENT OF OR REFUND FOR THE NON-CONFORMING PRODUCT(S) AT SELLER'S SOLE OPTION. THERE IS NO OBLIGATION TO REPAIR, REPLACE OR REFUND FOR PRODUCTS AS THE RESULT OF (I) ACCIDENT, DISASTER OR EVENT OF FORCE MAJEURE, (II) MISUSE, FAULT OR NEGLIGENCE OF OR BY BUYER, (III) USE OF THE PRODUCTS IN A MANNER FOR WHICH THEY WERE NOT DESIGNED, OR (IV) IMPROPER STORAGE AND HANDLING OF THE PRODUCTS. Unless otherwise expressly stated on the Product or in the documentation accompanying the Product, the Product is intended for research only and is not to be used for any other purpose, including without limitation, unauthorized commercial uses, in vitro diagnostic uses, ex vivo or in vivo therapeutic uses, or any type of consumption by or application to human or animals.