

Actin Polyclonal Antibody

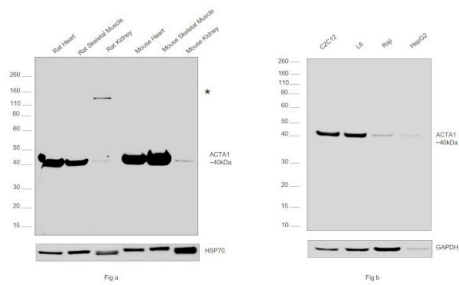
Product Details	
Size	100 µg
Species Reactivity	Human, Mouse, Rat
Published Species	Mouse
Host/Isotype	Rabbit / IgG
Class	Polyclonal
Type	Antibody
Conjugate	Unconjugated
Immunogen	A synthetic peptide corresponding to a sequence at the C-terminus of human Actin (277-308aa HETTYNSIMKCDIDIRKDLYANNVMSGGTTMY).
Form	Lyophilized
Concentration	500 µg/mL
Purification	Antigen affinity chromatography
Storage buffer	PBS with 4mg trehalose
Contains	no preservative
Storage conditions	-20°C
RRID	AB_2745831

Applications	Tested Dilution	Publications
Western Blot (WB)	0.1-0.5 µg/mL	1 Publication
Immunohistochemistry (Paraffin) (IHC (P))	0.5-1 µg/mL	-

Product Specific Information

Reconstitute with 0.2 mL of distilled water to yield a concentration of 500 µg/mL.

Product Images For Actin Polyclonal Antibody



Actin Antibody (PA5-78715)

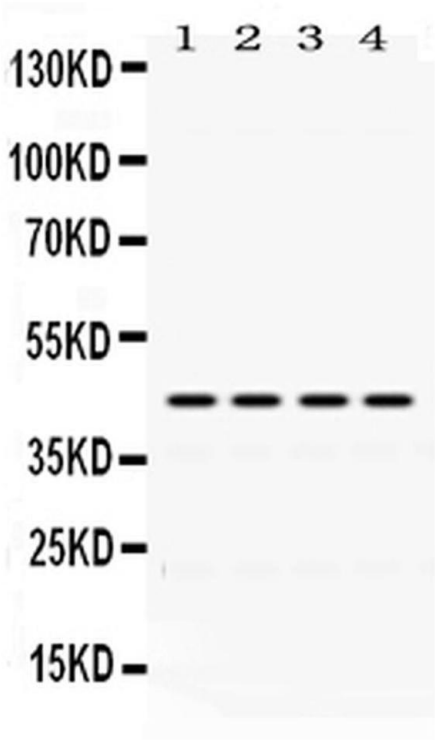
Antibody specificity was demonstrated by detection of differential basal expression of the target across tissue tested owing to their inherent genetic constitution. Relative expression of Actin was observed in Rat Heart, Rat Skeletal Muscle, Mouse Heart and Mouse Skeletal Muscle in comparison to Mouse Kidney and Rat Kidney using Actin Polyclonal Antibody (Product # PA5-78715) in Western Blot. {RE}

Actin Antibody (PA5-78715) in WB

Western blot was performed using Actin Polyclonal Antibody (Product # PA5-78715) and a 40 kDa band corresponding to Actin was observed across cell lines and tissue extracts along with an uncharacterized band (*) at ~120 kDa in the tissue extract tested. Whole cell extracts (30 µg lysate) of Rat Heart (Lane 1), Rat Skeletal Muscle (Lane 2), Rat Kidney (Lane 3), Mouse Heart (Lane 4), Mouse Skeletal Muscle (Lane 5) and Mouse Kidney (Lane 6) of Fig. a; cell lines of C2C12 (Lane 1), L6 (Lane 2), Raji (Lane 3) and Hep G2 (Lane 4) from Fig. b were electrophoresed using NuPAGE® 4-12 % Bis-Tris gel (Product # NP0322BOX). Resolved proteins were then transferred onto a nitrocellulose membrane (Product # IB23001) by iBlot® 2 Dry Blotting System (Product # IB21001). The blot was probed with the primary antibody (1:1000 dilution) and detected by chemiluminescence with Goat anti-Rabbit IgG (Heavy Chain), Superclonal™ Recombinant Secondary Antibody, HRP (Product # A27036, 1: 4000 dilution) using the iBright FL 1000 (Product # A32752). Chemiluminescent detection was performed using Novex® ECL Chemiluminescent Substrate Reagent Kit (Product # WP20005).

Actin Antibody (PA5-78715) in WB

Western blot analysis of Actin in Lane 1: rat spleen tissue lysate, Lane 2: mouse spleen tissue lysate, Lane 3: HeLa whole cell lysate, Lane 4: MCF-7 whole cell lysate using 40-50 µg per well. Sample was incubated with Actin (Product # PA5-78715) at a dilution of 0.5 µg/mL.



View more figures on thermofisher.com

Western Blot (1)

Frontiers in immunology	Year 2021
Mechanisms of FH Protection Against Neovascular AMD.	Species Mouse
"Published figure using Actin polyclonal antibody (Product # PA5-78715) in Western Blot"	Dilution 1:3000
Authors: Borrás C,Delaunay K,Slaoui Y,Abache T,Jorieux S,Naud MC,Sanharawi ME,Gelize E,Lassiaz P,An N, Kowalczyk L,Ayassami C,Moulin A,Béhar-Cohen F,Mascarelli F,Dinet V	

For Research Use Only. Not for use in diagnostic procedures. Not for resale without express authorization. Products are warranted to operate or perform substantially in conformance with published Product specifications in effect at the time of sale, as set forth in the Production documentation, specifications and/or accompanying package inserts ("Documentation"). No claim of suitability for use in applications regulated by FDA is made. The warranty provided herein is valid only when used by properly trained individuals. Unless otherwise stated in the Documentation, this warranty is limited to one year from date of shipment when the Product is subjected to normal, proper and intended usage. This warranty does not extend to anyone other than the Buyer. Any model or sample furnished to Buyer is merely illustrative of the general type and quality of goods and does not represent that any Product will conform to such model or sample. NO OTHER WARRANTIES, EXPRESS OR IMPLIED, ARE GRANTED INCLUDING WITHOUT LIMITATION, IMPLIED WARRANTIES OF MERCHANTABILITY, FITNESS FOR ANY PARTICULAR PURPOSE, OR NON-INFRINGEMENT. BUYER'S EXCLUSIVE REMEDY FOR NON-CONFORMING PRODUCTS DURING THE WARRANTY PERIOD IS LIMITED TO REPAIR, REPLACEMENT OF OR REFUND FOR THE NON-CONFORMING PRODUCT(S) AT SELLER'S SOLE OPTION. THERE IS NO OBLIGATION TO REPAIR, REPLACE OR REFUND FOR PRODUCTS AS THE RESULT OF (i) ACCIDENT, DISASTER OR EVENT OF FORCE MAJEURE, (ii) MISUSE, FAULT OR NEGLIGENCE OF OR BY BUYER, (iii) USE OF THE PRODUCTS IN A MANNER FOR WHICH THEY WERE NOT DESIGNED, OR (iv) IMPROPER STORAGE AND HANDLING OF THE PRODUCTS. Unless otherwise expressly stated on the Product or in the documentation accompanying the Product, the Product is intended for research only and is not to be used for any other purpose, including without limitation, unauthorized commercial uses, in vitro diagnostic uses, ex vivo or in vivo therapeutic uses, or any type of consumption by or application to human or animals.