

AMOTL2 Polyclonal Antibody

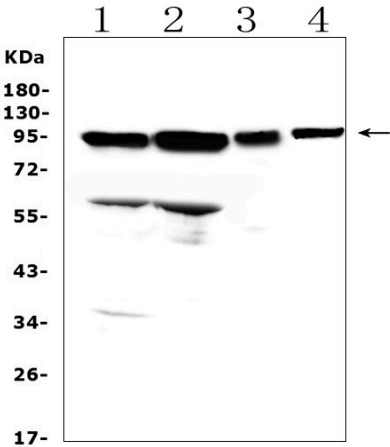
Product Details	
Size	100 µg
Species Reactivity	Human, Mouse, Rat
Published Species	Mouse, Human
Host/Isotype	Rabbit / IgG
Class	Polyclonal
Type	Antibody
Conjugate	Unconjugated
Immunogen	E. coli-derived human AMOTL2 recombinant protein (Position: A401-Q480).
Form	Lyophilized
Concentration	500 µg/mL
Purification	Antigen affinity chromatography
Storage buffer	PBS with 4mg trehalose
Contains	0.05mg sodium azide
Storage conditions	-20°C
RRID	AB_2745886

Applications	Tested Dilution	Publications
Western Blot (WB)	0.1-0.5 µg/mL	4 Publications

Product Specific Information

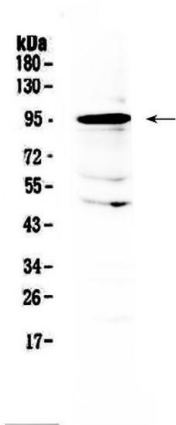
Reconstitute with 0.2 mL of distilled water to yield a concentration of 500 µg/mL.

Product Images For AMOTL2 Polyclonal Antibody



AMOTL2 Antibody (PA5-78770) in WB

Western blot analysis of AMOTL2 in, Lane 1: rat brain tissue lysates, Lane 2: rat lung tissue lysates, Lane 3: mouse lung tissue lysates, Lane 4: mouse liver tissue lysates. Electrophoresis was performed on a 5-20% SDS-PAGE gel at 70V (Stacking gel) / 90V (Resolving gel) for 2-3 hours. The sample well of each lane was loaded with 50 µg of sample under reducing conditions. After Electrophoresis, proteins were transferred to a Nitrocellulose membrane at 150mA for 50-90 minutes. The membrane was blocked with 5% Non-fat Milk/TBS for 1. 5 hour at RT. The membrane was incubated with AMOTL2 Polyclonal Antibody (Product # PA5-78770) at 0.5 g/mL overnight at 4°C, then washed with TBS-0. 1% Tween 3 times with 5 minutes each and probed with a goat anti-rabbit IgG-HRP secondary antibody at a dilution of 1:10000 for 1. 5 hour at RT. The signal is developed using an Enhanced Chemiluminescent detection (ECL) kit. A specific band was detected for AMOTL2 at approximately 95KD. The expected band size for AMOTL2 is at 86KD.



AMOTL2 Antibody (PA5-78770) in WB

Western blot analysis of AMOTL2 in Lane 1: human placenta tissue lysate using 50 µg (reducing conditions) per well. Electrophoresis was performed on 5-20% SDS-PAGE gel at 70V (Stacking gel) / 90V (Resolving gel) for 2-3 hours and protein was transferred to a nitrocellulose membrane at 150mA for 50-90 minutes. Sample was blocked with 5% Non-fat Milk/TBS for 1.5 hours at room temperature, incubated with AMOTL2 polyclonal antibody (Product # PA5-78770) at a dilution of 0.5 µg/mL (overnight at 4°C), followed by goat anti-rabbit IgG-HRP secondary antibody at a dilution of 1:10,000. Signal development was performed using a chemiluminescence (ECL) kit.

View more figures on thermofisher.com

Western Blot (4)

Environmental toxicology	Year 2021
AMOTL2 restrains transforming growth factor-1-induced proliferation and extracellular matrix deposition of airway smooth muscle cells via the down-regulation of YAP1 activation.	Species Mouse
"Published figure using AMOTL2 polyclonal antibody (Product # PA5-78770) in Western Blot"	Dilution 1:1000
Authors: Fang P,Deng WJ,Fan N,Shi J,Shi HY,Ou L,Pan JL,Yang SY	
iScience	Year 2021
Identification of response signatures for tankyrase inhibitor treatment in tumor cell lines.	
"Published figure using AMOTL2 polyclonal antibody (Product # PA5-78770) in Western Blot"	
Authors: Mygland L,Brinch SA,Strand MF,Olsen PA,Aizenshtadt A,Lund K,Solberg NT,Lycke M,Thorvaldsen TE,Espada S,Misaghian D,Page CM,Agafonov O,Nygård S,Chi NW,Lin E,Tan J,Yu Y,Costa M,Krauss S,Waaler J	

[View more WB references on thermofisher.com](#)

For Research Use Only. Not for use in diagnostic procedures. Not for resale without express authorization. Products are warranted to operate or perform substantially in conformance with published Product specifications in effect at the time of sale, as set forth in the Production documentation, specifications and/or accompanying package inserts ("Documentation"). No claim of suitability for use in applications regulated by FDA is made. The warranty provided herein is valid only when used by properly trained individuals. Unless otherwise stated in the Documentation, this warranty is limited to one year from date of shipment when the Product is subjected to normal, proper and intended usage. This warranty does not extend to anyone other than the Buyer. Any model or sample furnished to Buyer is merely illustrative of the general type and quality of goods and does not represent that any Product will conform to such model or sample. NO OTHER WARRANTIES, EXPRESS OR IMPLIED, ARE GRANTED INCLUDING WITHOUT LIMITATION, IMPLIED WARRANTIES OF MERCHANTABILITY, FITNESS FOR ANY PARTICULAR PURPOSE, OR NON INFRINGEMENT. BUYER'S EXCLUSIVE REMEDY FOR NON-CONFORMING PRODUCTS DURING THE WARRANTY PERIOD IS LIMITED TO REPAIR, REPLACEMENT OF OR REFUND FOR THE NON-CONFORMING PRODUCT(S) AT SELLER'S SOLE OPTION. THERE IS NO OBLIGATION TO REPAIR, REPLACE OR REFUND FOR PRODUCTS AS THE RESULT OF (I) ACCIDENT, DISASTER OR EVENT OF FORCE MAJEURE, (II) MISUSE, FAULT OR NEGLIGENCE OF OR BY BUYER, (III) USE OF THE PRODUCTS IN A MANNER FOR WHICH THEY WERE NOT DESIGNED, OR (IV) IMPROPER STORAGE AND HANDLING OF THE PRODUCTS. Unless otherwise expressly stated on the Product or in the documentation accompanying the Product, the Product is intended for research only and is not to be used for any other purpose, including without limitation, unauthorized commercial uses, in vitro diagnostic uses, ex vivo or in vivo therapeutic uses, or any type of consumption by or application to human or animals.