

SERCA2 ATPase Polyclonal Antibody

Product Details	
Size	100 µg
Species Reactivity	Human, Mouse, Rat
Published Species	Mouse
Host/Isotype	Rabbit / IgG
Class	Polyclonal
Type	Antibody
Conjugate	Unconjugated
Immunogen	A synthetic peptide corresponding to a sequence at the N-terminus of human SERCA2 ATPase (1-32aa MENAHTKTVEEVLGHFGVNESTGLSLEQVKKL).
Form	Lyophilized
Concentration	500 µg/mL
Purification	Antigen affinity chromatography
Storage buffer	PBS with 4mg trehalose
Contains	no preservative
Storage conditions	-20°C
RRID	AB_2745953

Applications	Tested Dilution	Publications
Western Blot (WB)	0.1-0.5 µg/mL	1 Publication
Immunohistochemistry (Paraffin) (IHC (P))	0.5-1 µg/mL	-
Immunocytochemistry (ICC/IF)	1:100	-

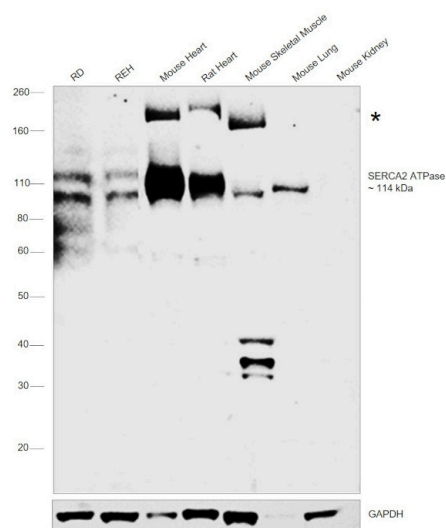
Product Specific Information

Reconstitute with 0.2 mL of distilled water to yield a concentration of 500 µg/mL.

Product Images For SERCA2 ATPase Polyclonal Antibody

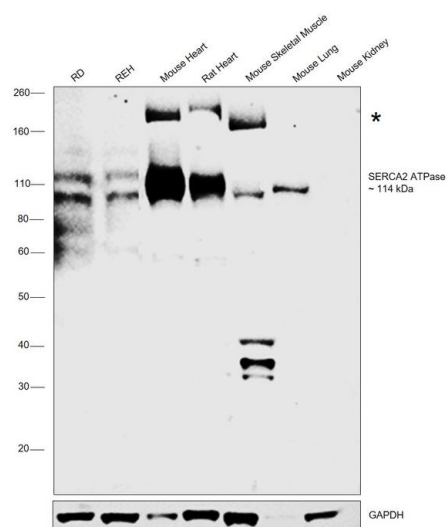
SERCA2 ATPase Antibody (PA5-78837)

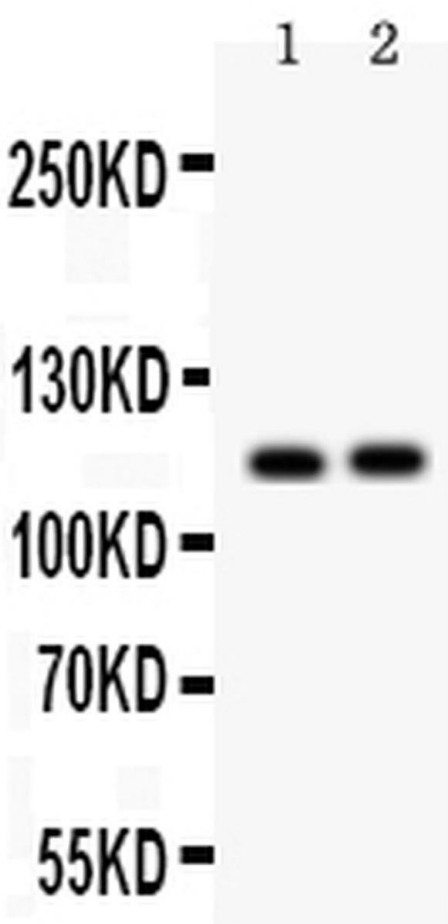
Antibody specificity was demonstrated by detection of differential basal expression of the target across cell models owing to their inherent genetic constitution. Western Blot analysis using Anti-SERCA2 ATPase Polyclonal Antibody (Product # PA5-78837) shows increased expression of SERCA2 ATPase in Mouse and Rat Heart in comparison to other tissues. {RE}



SERCA2 ATPase Antibody (PA5-78837) in WB

Western blot was performed using Anti-SERCA2 ATPase Polyclonal Antibody (Product # PA5-78837) and a 114 kDa band corresponding to SERCA2 ATPase was observed across all the cell lines and tissues tested with high expression in Mouse and Rat Heart in comparison to other tissues as reported, along with an uncharacterized band at ~200 kDa. Membrane enriched extracts (30 µg lysate) of RD (Lane 1), REH (Lane 2), tissue extracts of Mouse Heart (Lane 3), Rat Heart (Lane 4), Mouse Skeletal Muscle (Lane 5), Mouse Lung (Lane 6) and Mouse Kidney (Lane 7) were electrophoresed using Novex® NuPAGE® 4-12% Bis-Tris Protein Gel (Product # NP0322BOX). Resolved proteins were then transferred onto a nitrocellulose membrane (Product # IB23001) by iBlot® 2 Dry Blotting System (Product # IB21001). The blot was probed with the primary antibody (0.5 µg/ml) and detected by chemiluminescence with Goat anti-Rabbit IgG (H+L), Superclonal™ Recombinant Secondary Antibody, HRP (Product # A27036, 1:4000 dilution) using the iBright FL 1000 (Product # A32752). Chemiluminescent detection was performed using Novex® ECL Chemiluminescent Substrate Reagent Kit (Product # WP20005).





SERCA2 ATPase Antibody (PA5-78837) in WB

Western blot analysis of SERCA2 ATPase in Lane 1: rat skeletal muscle tissue lysate, Lane 2: mouse skeletal muscle tissue lysate using 50 µg per well. Sample was incubated with SERCA2 ATPase (Product # PA5-78837) at a dilution of 0.5 µg/mL.

[View more figures on thermofisher.com](#)

1 Reference

Western Blot (1)

Cell reports

Parvalbumin affects skeletal muscle trophism through modulation of mitochondrial calcium uptake.

"PA5-78837 was used in Western Blot to elucidate the role of parvalbumin in murine muscle cells."

Authors: Butera G, Vecellio Reane D, Canato M, Pietrangelo L, Boncompagni S, Protasi F, Rizzuto R, Reggiani C, Raffaello A

Year
2021

Species
Mouse

For Research Use Only. Not for use in diagnostic procedures. Not for resale without express authorization. Products are warranted to operate or perform substantially in conformance with published Product specifications in effect at the time of sale, as set forth in the Production documentation, specifications and/or accompanying package inserts ("Documentation"). No claim of suitability for use in applications regulated by FDA is made. The warranty provided herein is valid only when used by properly trained individuals. Unless otherwise stated in the Documentation, this warranty is limited to one year from date of shipment when the Product is subjected to normal, proper and intended usage. This warranty does not extend to anyone other than the Buyer. Any model or sample furnished to Buyer is merely illustrative of the general type and quality of goods and does not represent that any Product will conform to such model or sample. NO OTHER WARRANTIES, EXPRESS OR IMPLIED, ARE GRANTED INCLUDING WITHOUT LIMITATION, IMPLIED WARRANTIES OF MERCHANTABILITY, FITNESS FOR ANY PARTICULAR PURPOSE, OR NON INFRINGEMENT. BUYER'S EXCLUSIVE REMEDY FOR NON-CONFORMING PRODUCTS DURING THE WARRANTY PERIOD IS LIMITED TO REPAIR, REPLACEMENT OF OR REFUND FOR THE NON-CONFORMING PRODUCT(S) AT SELLER'S SOLE OPTION. THERE IS NO OBLIGATION TO REPAIR, REPLACE OR REFUND FOR PRODUCTS AS THE RESULT OF (I) ACCIDENT, DISASTER OR EVENT OF FORCE MAJEURE, (II) MISUSE, FAULT OR NEGLIGENCE OF OR BY BUYER, (III) USE OF THE PRODUCTS IN A MANNER FOR WHICH THEY WERE NOT DESIGNED, OR (IV) IMPROPER STORAGE AND HANDLING OF THE PRODUCTS. Unless otherwise expressly stated on the Product or in the documentation accompanying the Product, the Product is intended for research only and is not to be used for any other purpose, including without limitation, unauthorized commercial uses, in vitro diagnostic uses, ex vivo or in vivo therapeutic uses, or any type of consumption by or application to human or animals.