

DC-SIGN (CD209) Polyclonal Antibody

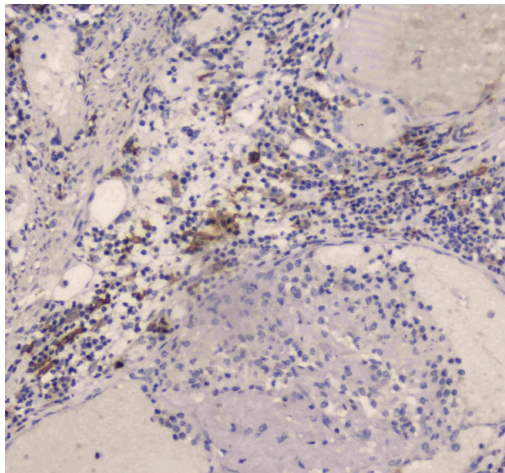
Product Details	
Size	100 µg
Species Reactivity	Human
Published Species	Human
Host/Isotype	Rabbit / IgG
Class	Polyclonal
Type	Antibody
Conjugate	Unconjugated
Immunogen	A synthetic peptide corresponding to a sequence of human DC-SIGN (MSDSKEPRLQQGLGLEEEQLRGLGFRQTRGYKSLA).
Form	Lyophilized
Concentration	500 µg/mL
Purification	Antigen affinity chromatography
Storage buffer	PBS with 4mg trehalose
Contains	0.05mg sodium azide
Storage conditions	-20°C
RRID	AB_2746084

Applications	Tested Dilution	Publications
Western Blot (WB)	0.1-0.5 µg/mL	-
Immunohistochemistry (IHC)	-	1 Publication
Immunohistochemistry (Paraffin) (IHC (P))	0.5-1 µg/mL	-
Flow Cytometry (Flow)	1-3 µg/1x10 ⁶ cells	1 Publication

Product Specific Information

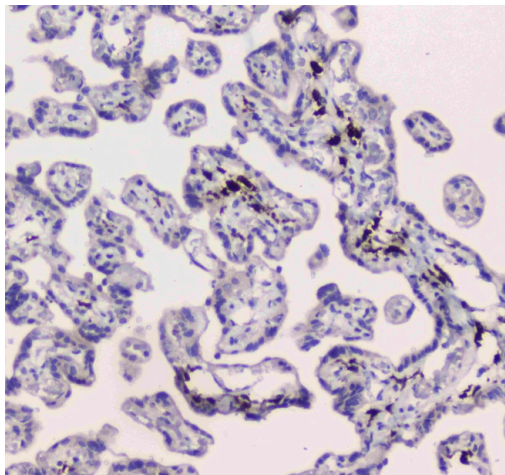
Reconstitute with 0.2 mL of distilled water to yield a concentration of 500 µg/mL.

Product Images For DC-SIGN (CD209) Polyclonal Antibody



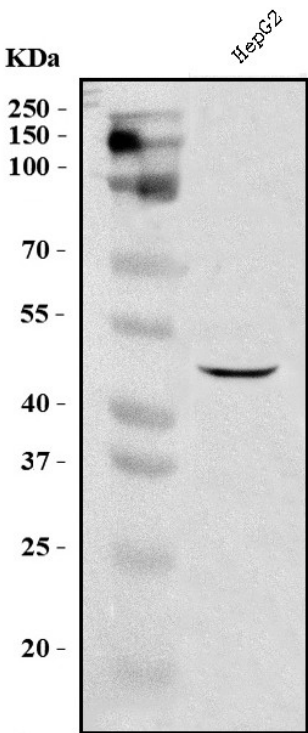
DC-SIGN (CD209) Antibody (PA5-78968) in IHC (P)

Immunohistochemistry analysis of DC-SIGN (CD209) on paraffin-embedded human intestinal cancer tissue. Antigen retrieval was performed using citrate buffer (pH6, epitope retrieval solution) for 20 mins. Sample was blocked using 10% goat serum, incubated with DC-SIGN (CD209) polyclonal antibody (Product# PA5-78968) with a dilution of 1 µg/mL (overnight at 4°C), and followed by biotinylated goat anti-rabbit IgG (30 minutes at 37°C). Development was performed using Streptavidin-Biotin-Complex (SABC) with DAB chromogen method.



DC-SIGN (CD209) Antibody (PA5-78968) in IHC (P)

Immunohistochemistry analysis of DC-SIGN (CD209) on paraffin-embedded human placenta tissue. Antigen retrieval was performed using citrate buffer (pH6, epitope retrieval solution) for 20 mins. Sample was blocked using 10% goat serum, incubated with DC-SIGN (CD209) polyclonal antibody (Product# PA5-78968) with a dilution of 1 µg/mL (overnight at 4°C), and followed by biotinylated goat anti-rabbit IgG (30 minutes at 37°C). Development was performed using Streptavidin-Biotin-Complex (SABC) with DAB chromogen method.



DC-SIGN (CD209) Antibody (PA5-78968) in WB

Western blot analysis of DC-SIGN in, Lane 1: human HepG2 whole cell lysates. Electrophoresis was performed on a 5-20% SDS-PAGE gel at 70V (Stacking gel) / 90V (Resolving gel) for 2-3 hours. The sample well of each lane was loaded with 30 µg of sample under reducing conditions. After Electrophoresis, proteins were transferred to a nitrocellulose membrane at 150 mA for 50-90 minutes. The membrane was blocked with 5% non-fat milk/TBS for 1. 5 hour at RT. The membrane was incubated with DC-SIGN (CD209) Polyclonal Antibody (Product # PA5-78968) at 0.5 g/mL overnight at 4°C, then washed with TBS-0. 1% Tween 3 times with 5 minutes each and probed with a goat anti-rabbit IgG-HRP secondary antibody at a dilution of 1:5,000 for 1. 5 hour at RT. The signal is developed using an Enhanced Chemiluminescent detection (ECL) kit. A specific band was detected for DC-SIGN at approximately 46 kDa. The expected band size for DC-SIGN is at 46 kDa.

🔖 2 References

Immunohistochemistry (1)

Immunology and cell biology	Year 2020
The use of patient-derived breast tissue explants to study macrophage polarization and the effects of environmental chemical exposure.	Species Human
"Published figure using DC-SIGN (CD209) polyclonal antibody (Product # PA5-78968) in Flow Cytometry"	Dilution 1:1000
Authors: Gregory KJ,Morin SM,Kubosiak A,Ser-Dolansky J,Schalet BJ,Jerry DJ,Schneider SS	

Flow Cytometry (1)

Immunology and cell biology	Year 2020
The use of patient-derived breast tissue explants to study macrophage polarization and the effects of environmental chemical exposure.	Species Human
"Published figure using DC-SIGN (CD209) polyclonal antibody (Product # PA5-78968) in Flow Cytometry"	Dilution 1:1000
Authors: Gregory KJ,Morin SM,Kubosiak A,Ser-Dolansky J,Schalet BJ,Jerry DJ,Schneider SS	

For Research Use Only. Not for use in diagnostic procedures. Not for resale without express authorization. Products are warranted to operate or perform substantially in conformance with published Product specifications in effect at the time of sale, as set forth in the Production documentation, specifications and/or accompanying package inserts ("Documentation"). No claim of suitability for use in applications regulated by FDA is made. The warranty provided herein is valid only when used by properly trained individuals. Unless otherwise stated in the Documentation, this warranty is limited to one year from date of shipment when the Product is subjected to normal, proper and intended usage. This warranty does not extend to anyone other than the Buyer. Any model or sample furnished to Buyer is merely illustrative of the general type and quality of goods and does not represent that any Product will conform to such model or sample. NO OTHER WARRANTIES, EXPRESS OR IMPLIED, ARE GRANTED INCLUDING WITHOUT LIMITATION, IMPLIED WARRANTIES OF MERCHANTABILITY, FITNESS FOR ANY PARTICULAR PURPOSE, OR NON INFRINGEMENT. BUYER'S EXCLUSIVE REMEDY FOR NON-CONFORMING PRODUCTS DURING THE WARRANTY PERIOD IS LIMITED TO REPAIR, REPLACEMENT OF OR REFUND FOR THE NON-CONFORMING PRODUCT(S) AT SELLER'S SOLE OPTION. THERE IS NO OBLIGATION TO REPAIR, REPLACE OR REFUND FOR PRODUCTS AS THE RESULT OF (i) ACCIDENT, DISASTER OR EVENT OF FORCE MAJEURE, (ii) MISUSE, FAULT OR NEGLIGENCE OF OR BY BUYER, (iii) USE OF THE PRODUCTS IN A MANNER FOR WHICH THEY WERE NOT DESIGNED, OR (iv) IMPROPER STORAGE AND HANDLING OF THE PRODUCTS. Unless otherwise expressly stated on the Product or in the documentation accompanying the Product, the Product is intended for research only and is not to be used for any other purpose, including without limitation, unauthorized commercial uses, in vitro diagnostic uses, ex vivo or in vivo therapeutic uses, or any type of consumption by or application to human or animals.