

LAT Polyclonal Antibody

| Product Details | |
|--------------------|---|
| Size | 100 µg |
| Species Reactivity | Human |
| Host/Isotype | Rabbit / IgG |
| Class | Polyclonal |
| Type | Antibody |
| Conjugate | Unconjugated |
| Immunogen | A synthetic peptide corresponding to a sequence at the C-terminus of human LAT. |
| Form | Lyophilized |
| Concentration | 500 µg/mL |
| Storage conditions | -20°C |
| RRID | AB_2746698 |

| Applications | Tested Dilution | Publications |
|---|-----------------|--------------|
| Western Blot (WB) | 0.1-0.5 µg/mL | - |
| Immunohistochemistry (Paraffin) (IHC (P)) | 0.5-1 µg/mL | - |
| Immunocytochemistry (ICC/IF) | 0.5-1 µg/mL | - |

Product Specific Information

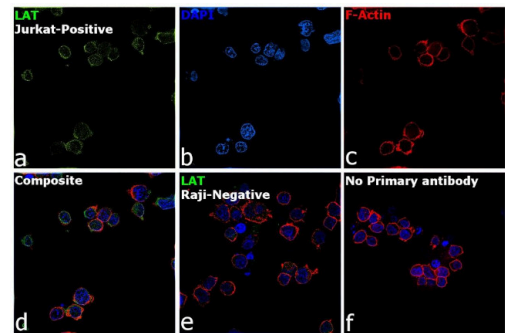
The synthetic peptide sequence is 242-262aa, QEAEVEEEEGAPDYENLQELN

Add 0.2 mL of distilled water, will yield a concentration of 500 µg/mL.

Product Images For LAT Polyclonal Antibody

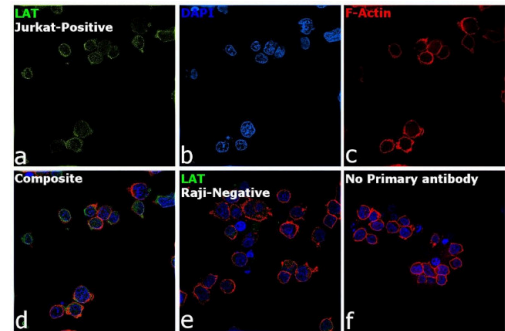
LAT Antibody (PA5-79583) in ICC/IF

Immunofluorescence analysis of LAT was performed using Jurkat cells as positive model and Raji as negative model. The cells were fixed with 4% paraformaldehyde for 10 minutes, permeabilized with 0.1% Triton™ X-100 for 10 minutes, and blocked with 2% BSA for 45 minutes at room temperature. The cells were labeled with LAT Polyclonal Antibody (Product # PA5-79583) at 1:100 in 0.1% BSA, incubated at 4 degree celsius overnight and then labeled with Donkey anti-Rabbit IgG (H+L) Highly Cross-Adsorbed Secondary Antibody, Alexa Fluor Plus 488 (Product # A32790), (1:2500 dilution), for 45 minutes at room temperature (Panel a: Green). Nuclei (Panel b: Blue) were stained with ProLong™ Diamond Antifade Mountant with DAPI (Product # P36962). F-actin (Panel c: Red) was stained with Rhodamine Phalloidin (Product # R415, 1:300). Panel d represents the merged image showing plasma membrane localization of LAT in Jurkat. Panel e represents Raji cells with no staining for LAT. Panel f represents Jurkat cells with no primary antibody to assess background. The images were captured at 60X magnification.



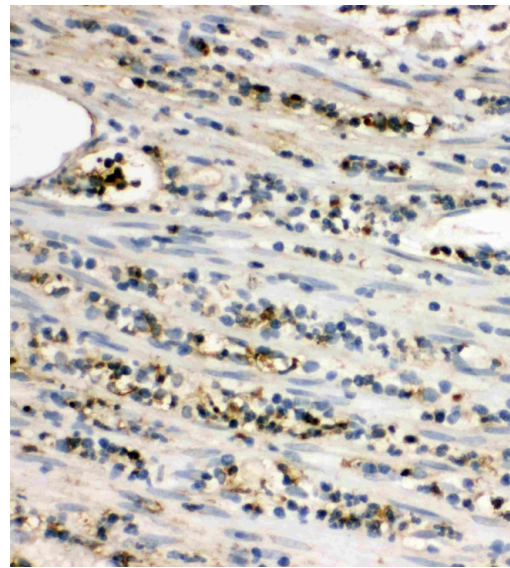
LAT Antibody (PA5-79583)

Antibody specificity was demonstrated by detection of differential basal expression of the target across cell models owing to their inherent genetic constitution. Immunofluorescence analysis using Anti-LAT Polyclonal Antibody (Product # PA5-79583) shows plasma membrane staining in Jurkat cells (T-cell line) in comparison to Raji (B-cell line) that is negative for LAT. {RE}



LAT Antibody (PA5-79583) in IHC (P)

Immunohistochemistry analysis of LAT on paraffin-embedded human appendicitis tissue. Sample was incubated with LAT polyclonal antibody (Product# PA5-79583).



View more figures on thermofisher.com

For Research Use Only. Not for use in diagnostic procedures. Not for resale without express authorization. Products are warranted to operate or perform substantially in conformance with published Product specifications in effect at the time of sale, as set forth in the Production documentation, specifications and/or accompanying package inserts ("Documentation"). No claim of suitability for use in applications regulated by FDA is made. The warranty provided herein is valid only when used by properly trained individuals. Unless otherwise stated in the Documentation, this warranty is limited to one year from date of shipment when the Product is subjected to normal, proper and intended usage. This warranty does not extend to anyone other than the Buyer. Any model or sample furnished to Buyer is merely illustrative of the general type and quality of goods and does not represent that any Product will conform to such model or sample. NO OTHER WARRANTIES, EXPRESS OR IMPLIED, ARE GRANTED INCLUDING WITHOUT LIMITATION, IMPLIED WARRANTIES OF MERCHANTABILITY, FITNESS FOR ANY PARTICULAR PURPOSE, OR NON-INFRINGEMENT. BUYER'S EXCLUSIVE REMEDY FOR NON-CONFORMING PRODUCTS DURING THE WARRANTY PERIOD IS LIMITED TO REPAIR, REPLACEMENT OF OR REFUND FOR THE NON-CONFORMING PRODUCT(S) AT SELLER'S SOLE OPTION. THERE IS NO OBLIGATION TO REPAIR, REPLACE OR REFUND FOR PRODUCTS AS THE RESULT OF (i) ACCIDENT, DISASTER OR EVENT OF FORCE MAJEURE, (ii) MISUSE, FAULT OR NEGLIGENCE OF OR BY BUYER, (iii) USE OF THE PRODUCTS IN A MANNER FOR WHICH THEY WERE NOT DESIGNED, OR (iv) IMPROPER STORAGE AND HANDLING OF THE PRODUCTS. Unless otherwise expressly stated on the Product or in the documentation accompanying the Product, the Product is intended for research only and is not to be used for any other purpose, including without limitation, unauthorized commercial uses, in vitro diagnostic uses, ex vivo or in vivo therapeutic uses, or any type of consumption by or application to human or animals.