

Menin Polyclonal Antibody

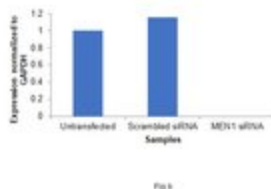
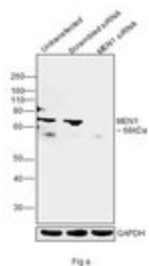
| Product Details | |
|--------------------|---|
| Size | 100 µg |
| Species Reactivity | Human, Mouse |
| Host/Isotope | Rabbit / IgG |
| Class | Polyclonal |
| Type | Antibody |
| Conjugate | Unconjugated |
| Immunogen | E.coli-derived human Menin recombinant protein (Position: P301-L615). |
| Form | Lyophilized |
| Concentration | 500 µg/mL |
| Purification | Antigen affinity chromatography |
| Storage buffer | PBS with 5mg BSA |
| Contains | 0.05mg sodium azide |
| Storage Conditions | -20°C |
| RRID | AB_2746778 |

| Applications | Tested Dilution | Publications |
|---------------------------|-----------------|--------------|
| Immunocytochemistry (ICC) | 1:100 | - |
| Immunofluorescence (IF) | 1:100 | - |
| Western Blot (WB) | 0.1-0.5 µg/mL | - |

Product Specific Information

Add 0.2 mL of distilled water, will yield a concentration of 500 µg/mL.

Advanced Verification Data

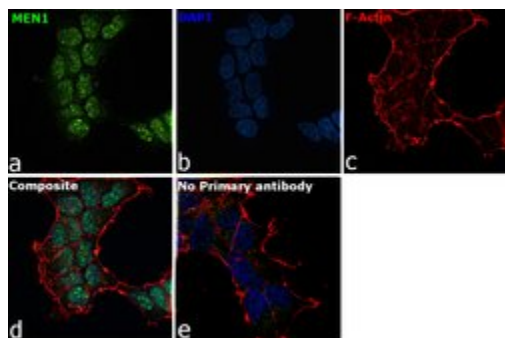


Menin Antibody (PA5-79663)

Antibody specificity was demonstrated by siRNA mediated knockdown of target protein. HEK 293 cells were transfected with MEN1 siRNA and decrease in signal intensity was observed in western blot application using MEN1 Polyclonal Antibody (Product # PA5-79663) Knockdown validation info.

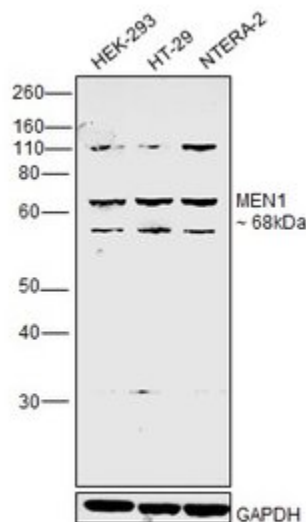
Product Images For Menin Polyclonal Antibody

Menin Antibody (PA5-79663) in ICC



Immunofluorescence analysis of MEN1 was performed using 70% confluent log phase HEK cells. The cells were fixed with 4% paraformaldehyde for 10 minutes, permeabilized with 0.1% Triton™ X-100 for 15 minutes, and blocked with 2% BSA for 1 hour at room temperature. The cells were labeled with MEN1 Polyclonal Antibody (Product # PA5-79663) at 1:100 dilution in 0.1% BSA, incubated at 4 degree Celsius overnight and then labeled with Goat anti-Rabbit IgG (H+L) Superclonal™ Recombinant Secondary Antibody, Alexa Fluor® 488 conjugate (Product # A27034) at a dilution of 1:2000 for 45 minutes at room temperature (Panel a: green). Nuclei (Panel b: blue) were stained with SlowFade® Gold Antifade Mountant with DAPI (Product # S36938). F-actin (Panel c: red) was stained with Rhodamine Phalloidin (Product # R415, 1:300). Panel d represents the merged image showing localization to nucleus. Panel e represents control cells with no primary antibody to assess background. The images were captured at 60X magnification.

Menin Antibody (PA5-79663) in WB



Western blot was performed using Menin Polyclonal Antibody (Product # PA5-79663) and a 68 kDa band corresponding to MEN1 was observed across cell lines tested. Modified whole cell extracts (1% SDS) (30 µg lysate) of HEK-293 (Lane 1), HT-29 (Lane 2) and NTERA-2 (Lane 3) were electrophoresed using NuPAGE® 4-12 % Bis-Tris gel (Product # NP0322BOX). Resolved proteins were then transferred onto a nitrocellulose membrane (Product # IB23001) by iBlot® 2 Dry Blotting System (Product # IB21001). The blot was probed with the primary antibody (0.2 µg/mL) and detected by chemiluminescence with Goat anti-Rabbit IgG (H+L), Superclonal™ Recombinant Secondary Antibody, HRP (Product # A27036, 1:4000 dilution) using the iBright FL 1000 (Product # A32752). Chemiluminescent detection was performed using Novex® ECL Chemiluminescent Substrate Reagent Kit (Product # WP20005).

[View more figures on thermofisher.com](https://www.thermofisher.com)

For Research Use Only. Not for use in diagnostic procedures. Not for resale without express authorization. Products are warranted to operate or perform substantially in conformance with published Product specifications in effect at the time of sale, as set forth in the Production documentation, specifications and/or accompanying package inserts ("Documentation"). No claim of suitability for use in applications regulated by FDA is made. The warranty provided herein is valid only when used by properly trained individuals. Unless otherwise stated in the Documentation, this warranty is limited to one year from date of shipment when the Product is subjected to normal, proper and intended usage. This warranty does not extend to anyone other than the Buyer. Any model or sample furnished to Buyer is merely illustrative of the general type and quality of goods and does not represent that any Product will conform to such model or sample. NO OTHER WARRANTIES, EXPRESS OR IMPLIED, ARE GRANTED INCLUDING WITHOUT LIMITATION, IMPLIED WARRANTIES OF MERCHANTABILITY, FITNESS FOR ANY PARTICULAR PURPOSE, OR NON-INFRINGEMENT. BUYER'S EXCLUSIVE REMEDY FOR NON-CONFORMING PRODUCTS DURING THE WARRANTY PERIOD IS LIMITED TO REPAIR, REPLACEMENT OF OR REFUND FOR THE NON-CONFORMING PRODUCT(S) AT SELLER'S SOLE OPTION. THERE IS NO OBLIGATION TO REPAIR, REPLACE OR REFUND FOR PRODUCTS AS THE RESULT OF (I) ACCIDENT, DISASTER OR EVENT OF FORCE MAJEURE, (II) MISUSE, FAULT OR NEGLIGENCE OF OR BY BUYER, (III) USE OF THE PRODUCTS IN A MANNER FOR WHICH THEY WERE NOT DESIGNED, OR (IV) IMPROPER STORAGE AND HANDLING OF THE PRODUCTS. Unless otherwise expressly stated on the Product or in the documentation accompanying the Product, the Product is intended for research only and is not to be used for any other purpose, including without limitation, unauthorized commercial uses, in vitro diagnostic uses, ex vivo or in vivo therapeutic uses, or any type of consumption by or application to human or animals.