

PKLR Polyclonal Antibody

Product Details	
Size	100 µg
Species Reactivity	Human, Mouse, Rat
Published Species	Mouse
Host/Isotype	Rabbit / IgG
Class	Polyclonal
Type	Antibody
Conjugate	Unconjugated
Immunogen	A synthetic peptide corresponding to a sequence at the C-terminus of human PKLR (522-552aa EAIWADDVDRRVQFGIESGKLRGFLRVGDLV).
Form	Lyophilized
Concentration	500 µg/mL
Purification	Antigen affinity chromatography
Storage buffer	PBS with 5mg BSA
Contains	0.05mg sodium azide
Storage conditions	-20°C
RRID	AB_2746939

Applications	Tested Dilution	Publications
Western Blot (WB)	0.1-0.5 µg/mL	1 Publication
Immunohistochemistry (Paraffin) (IHC (P))	0.5-1 µg/mL	-

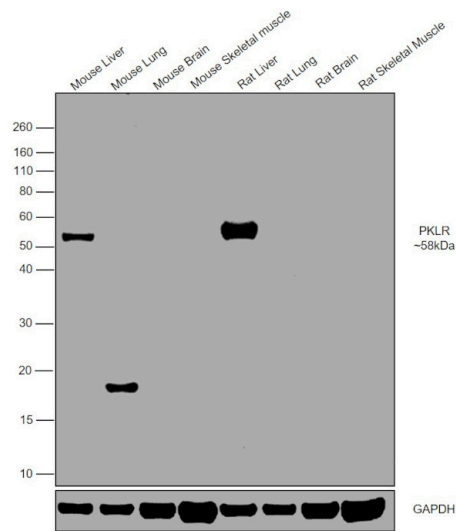
Product Specific Information

Reconstitute with 0.2 mL of distilled water to yield a concentration of 500 µg/mL.

Product Images For PKLR Polyclonal Antibody

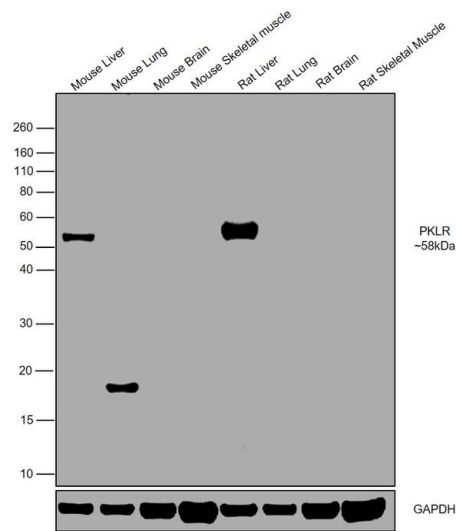
PKLR Antibody (PA5-79824)

Antibody specificity was demonstrated by detection of differential basal expression of the target across tissues owing to their inherent genetic constitution. Relative expression of PKLR was observed in Mouse Liver and Rat Liver when compared to Mouse Lung, Mouse Brain, Mouse Skeletal muscle, Rat Lung, Rat Brain and Rat Skeletal muscle using PKLR Polyclonal Antibody (Product # PA5-79824) in western blot. {RE}



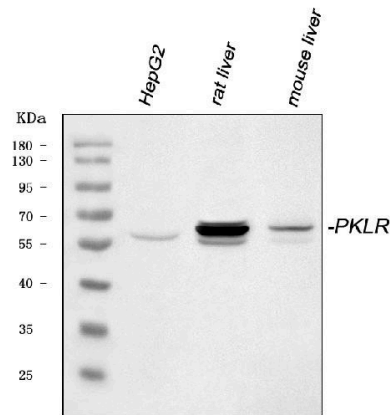
PKLR Antibody (PA5-79824) in WB

Western blot was performed using Anti-PKLR Polyclonal Antibody (Product # PA5-79824) and a 58kDa band corresponding to PKLR was observed in Mouse Liver and Rat Liver, but not in the other tissue models which are reported to be negative for PKLR expression. Whole cell lysate (30ug lysate) of Mouse Liver (Lane 1), Mouse Lung (Lane 2), Mouse Brain (Lane 3), Mouse Skeletal muscle (Lane 4), Rat Liver (Lane 5), Rat Lung (Lane 6), Rat Brain (Lane 7), and Rat Skeletal muscle (Lane 8) were electrophoresed using Novex® NuPAGE® 4-12 % Bis-Tris gel (Product # NP0322BOX). Resolved proteins were then transferred onto a nitrocellulose membrane (Product # IB23001) by iBlot® 2 Dry Blotting System (Product # IB21001). The blot was probed with the primary antibody (0.5 µg/ml) and detected by chemiluminescence with Goat anti-Rabbit IgG (H+L), Superclonal™ Recombinant Secondary Antibody, HRP conjugate (Product # A27036, 1:4000 dilution) using the iBright FL 1000 (Product # A32752). Chemiluminescent detection was performed using Novex® ECL Chemiluminescent Substrate Reagent Kit (Product # WP20005).



PKLR Antibody (PA5-79824) in WB

Western blot analysis of PKLR in, Lane 1: human HepG2 whole cell lysates, Lane 2: rat liver tissue lysates, Lane 3: mouse liver tissue lysates. Electrophoresis was performed on a 5-20% SDS-PAGE gel at 70V (Stacking gel) / 90V (Resolving gel) for 2-3 hours. The sample well of each lane was loaded with 30 µg of sample under reducing conditions. After Electrophoresis, proteins were transferred to a nitrocellulose membrane at 150 mA for 50-90 minutes. The membrane was blocked with 5% non-fat milk/TBS for 1.5 hour at RT. The membrane was incubated with PKLR Polyclonal Antibody (Product # PA5-79824) at 0.5 g/mL overnight at 4°C, then washed with TBS-0.1% Tween 3 times with 5 minutes each and probed with a goat anti-rabbit IgG-HRP secondary antibody at a dilution of 1:5,000 for 1.5 hour at RT. The signal is developed using an Enhanced Chemiluminescent detection (ECL) kit. A specific band was detected for PKLR at approximately 62 kDa. The expected band size for PKLR is at 62 kDa.



View more figures on thermofisher.com

Western Blot (1)

Cellular and molecular gastroenterology and hepatology	Year 2021
Liver Pyruvate Kinase Promotes NAFLD/NASH in Both Mice and Humans in a Sex-Specific Manner.	Species Mouse
<p>"PA5-79824 was used in Western Blotting to investigate the role of one of these, liver pyruvate kinase (L-PK or Pklr), in NAFLD by using patient samples and mouse models."</p> <p>Authors: Chella Krishnan K,Floyd RR,Sabir S,Jayasekera DW,Leon-Mimila PV,Jones AE,Cortez AA,Shravah V,Péterfy M,Stiles L,Canizales-Quinteros S,Divakaruni AS,Huertas-Vazquez A,Lusis AJ</p>	

For Research Use Only. Not for use in diagnostic procedures. Not for resale without express authorization. Products are warranted to operate or perform substantially in conformance with published Product specifications in effect at the time of sale, as set forth in the Production documentation, specifications and/or accompanying package inserts ("Documentation"). No claim of suitability for use in applications regulated by FDA is made. The warranty provided herein is valid only when used by properly trained individuals. Unless otherwise stated in the Documentation, this warranty is limited to one year from date of shipment when the Product is subjected to normal, proper and intended usage. This warranty does not extend to anyone other than the Buyer. Any model or sample furnished to Buyer is merely illustrative of the general type and quality of goods and does not represent that any Product will conform to such model or sample. NO OTHER WARRANTIES, EXPRESS OR IMPLIED, ARE GRANTED INCLUDING WITHOUT LIMITATION, IMPLIED WARRANTIES OF MERCHANTABILITY, FITNESS FOR ANY PARTICULAR PURPOSE, OR NON INFRINGEMENT. BUYER'S EXCLUSIVE REMEDY FOR NON-CONFORMING PRODUCTS DURING THE WARRANTY PERIOD IS LIMITED TO REPAIR, REPLACEMENT OF OR REFUND FOR THE NON-CONFORMING PRODUCT(S) AT SELLER'S SOLE OPTION. THERE IS NO OBLIGATION TO REPAIR, REPLACE OR REFUND FOR PRODUCTS AS THE RESULT OF (i) ACCIDENT, DISASTER OR EVENT OF FORCE MAJEURE, (ii) MISUSE, FAULT OR NEGLIGENCE OF OR BY BUYER, (iii) USE OF THE PRODUCTS IN A MANNER FOR WHICH THEY WERE NOT DESIGNED, OR (iv) IMPROPER STORAGE AND HANDLING OF THE PRODUCTS. Unless otherwise expressly stated on the Product or in the documentation accompanying the Product, the Product is intended for research only and is not to be used for any other purpose, including without limitation, unauthorized commercial uses, in vitro diagnostic uses, ex vivo or in vivo therapeutic uses, or any type of consumption by or application to human or animals.