

PPM1A Polyclonal Antibody

| Product Details | |
|--------------------|--|
| Size | 100 µL |
| Species Reactivity | Human, Mouse, Rat |
| Host/Isotype | Rabbit / IgG |
| Class | Polyclonal |
| Type | Antibody |
| Conjugate | Unconjugated |
| Immunogen | Recombinant Mouse PPM1A protein (Met1-Trp382) |
| Form | Liquid |
| Concentration | 1 mg/mL |
| Purification | Protein A, Antigen affinity chromatography |
| Storage buffer | PBS |
| Contains | no preservative |
| Storage conditions | Store at 4°C short term. For long term storage, store at -20°C, avoiding freeze/thaw cycles. |
| RRID | AB_2788666 |

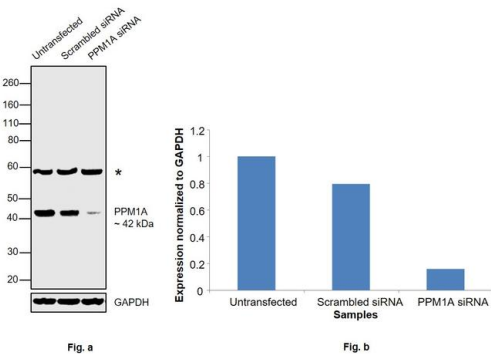
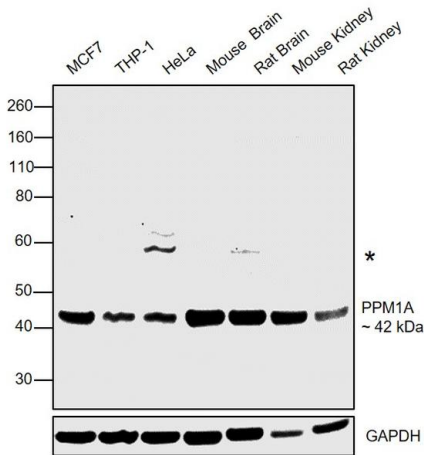
| Applications | Tested Dilution | Publications |
|--------------------------|---------------------|--------------|
| Western Blot (WB) | 1:500-1:2,000 | - |
| ELISA (ELISA) | 1:5,000-1:10,000 | - |
| Immunoprecipitation (IP) | 4-6 µL/mg of lysate | - |

Product Specific Information

This product is preservative free. It is recommended to add sodium azide to avoid contamination (final concentration 0.05% -0.1%).

This antibody has specificity for Mouse PPM1A/PP2C-alpha.

Product Images For PPM1A Polyclonal Antibody

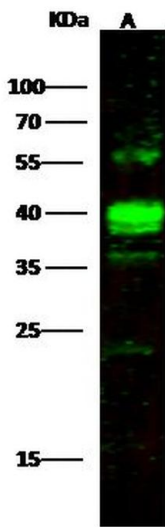


PPM1A Antibody (PA5-81458) in WB

Western Blot was performed using Anti-PP2CA Polyclonal Antibody (Product # PA5-81458) and a 42 kDa band corresponding to Protein phosphatase 1A was observed across cell lines and tissues with uncharacterized band(*) (30 µg lysate) of MCF7 (Lane 1), THP-1 (Lane 2), HeLa (Lane 3), Mouse Brain (Lane 4), Rat Brain (Lane 5), Mouse Kidney (Lane 6), Rat Kidney (Lane 7) were electrophoresed using NuPAGE™ 4-12% Bis-Tris Protein Gel (Product # NP0322BOX). Resolved proteins were then transferred onto a Nitrocellulose membrane (Product # IB23002) by iBlot® 2 Dry Blotting System (Product # IB21001). The Blot was probed with the primary antibody (1:1000) and detected by chemiluminescence with Goat anti-Rabbit IgG (Heavy Chain) Superclonal™ Recombinant Secondary Antibody, HRP (Product # A27036, 1:4000) using the iBright FL 1000 (Product # A32752). Chemiluminescent detection was performed using Novex® ECL Chemiluminescent Substrate Reagent Kit (Product # WP20005).

PPM1A Antibody (PA5-81458) in WB

Knockdown of Protein phosphatase 1A was achieved by transfecting HeLa with Protein phosphatase 1A specific siRNAs (Silencer® select Product # S10919, S10921). Western Blot analysis (Fig. a) was performed using Whole cell extracts from the Protein phosphatase 1A knockdown cells (lane 3), non-targeting scrambled siRNA transfected cells (lane 2) and untransfected cells (lane 1). The Blot was probed with PP2CA Polyclonal Antibody (Product # PA5-81458, 1:1000) and Goat anti-Rabbit IgG (Heavy Chain) Superclonal™ Recombinant Secondary Antibody, HRP (Product # A27036, 1:4000). Densitometric analysis of this western Blot is shown in histogram (Fig. b). Decrease in signal upon siRNA mediated knock down confirms that antibody is specific to Protein phosphatase 1A.



PPM1A Antibody (PA5-81458) in WB

Western Blot using PPM1A Polyclonal Antibody (Product # PA5-81458) at 1:500 dilution. Lane A: 293T Whole Cell Lysate. Lysates/proteins at 30 g per lane. Secondary Goat Anti-Rabbit IgG H&L (DyLight™ 800) at 1:10,000 dilution. Developed using the Odyssey technique. Performed under reducing conditions. Predicted band size: 42 kDa. Observed band size: 40 kDa. (We are unsure of the identity of these extra bands).

View more figures on thermofisher.com

For Research Use Only. Not for use in diagnostic procedures. Not for resale without express authorization. Products are warranted to operate or perform substantially in conformance with published Product specifications in effect at the time of sale, as set forth in the Production documentation, specifications and/or accompanying package inserts ("Documentation"). No claim of suitability for use in applications regulated by FDA is made. The warranty provided herein is valid only when used by properly trained individuals. Unless otherwise stated in the Documentation, this warranty is limited to one year from date of shipment when the Product is subjected to normal, proper and intended usage. This warranty does not extend to anyone other than the Buyer. Any model or sample furnished to Buyer is merely illustrative of the general type and quality of goods and does not represent that any Product will conform to such model or sample. NO OTHER WARRANTIES, EXPRESS OR IMPLIED, ARE GRANTED INCLUDING WITHOUT LIMITATION, IMPLIED WARRANTIES OF MERCHANTABILITY, FITNESS FOR ANY PARTICULAR PURPOSE, OR NON-INFRINGEMENT. BUYER'S EXCLUSIVE REMEDY FOR NON-CONFORMING PRODUCTS DURING THE WARRANTY PERIOD IS LIMITED TO REPAIR, REPLACEMENT OF OR REFUND FOR THE NON-CONFORMING PRODUCT(S) AT SELLER'S SOLE OPTION. THERE IS NO OBLIGATION TO REPAIR, REPLACE OR REFUND FOR PRODUCTS AS THE RESULT OF (I) ACCIDENT, DISASTER OR EVENT OF FORCE MAJEURE, (II) MISUSE, FAULT OR NEGLIGENCE OF OR BY BUYER, (III) USE OF THE PRODUCTS IN A MANNER FOR WHICH THEY WERE NOT DESIGNED, OR (IV) IMPROPER STORAGE AND HANDLING OF THE PRODUCTS. Unless otherwise expressly stated on the Product or in the documentation accompanying the Product, the Product is intended for research only and is not to be used for any other purpose, including without limitation, unauthorized commercial uses, in vitro diagnostic uses, ex vivo or in vivo therapeutic uses, or any type of consumption by or application to human or animals.