

Phospho-CDK1 (Tyr15) Polyclonal Antibody

Product Details	
Size	100 µL
Species Reactivity	Human
Host/Isotype	Rabbit / IgG
Class	Polyclonal
Type	Antibody
Conjugate	Unconjugated
Immunogen	Carrier-protein conjugated synthetic peptide corresponding to residues around human CDC2 (phospho Tyr15).
Form	Liquid
Concentration	0.84 mg/mL
Purification	Antigen affinity chromatography
Storage buffer	PBS, pH 7, with 20% glycerol
Contains	0.01% thimerosal
Storage conditions	Store at 4°C short term. For long term storage, store at -20°C, avoiding freeze/thaw cycles.
RRID	AB_2792648

Applications	Tested Dilution	Publications
Western Blot (WB)	1:500-1:3,000	-
Immunohistochemistry (Paraffin) (IHC (P))	1:100-1:1,000	-
Immunoprecipitation (IP)	1:100-1:500	-

Product Specific Information

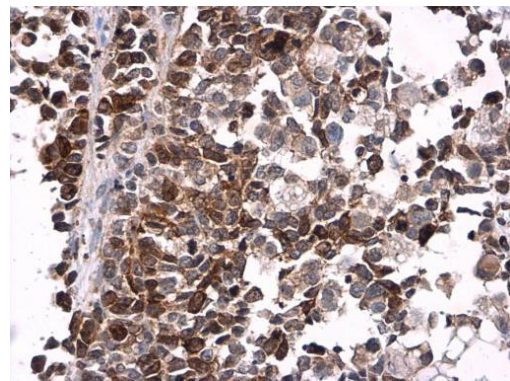
Keep as concentrated solution.

Predicted reactivity: Mouse (100%), Rat (100%), Zebrafish (100%), Japanese Medaka (100%), Drosophila (100%), Xenopus laevis (100%), Pig (100%), Chicken (100%), Sheep (100%), Rhesus Monkey (100%), Chimpanzee (100%), Bovine (100%).

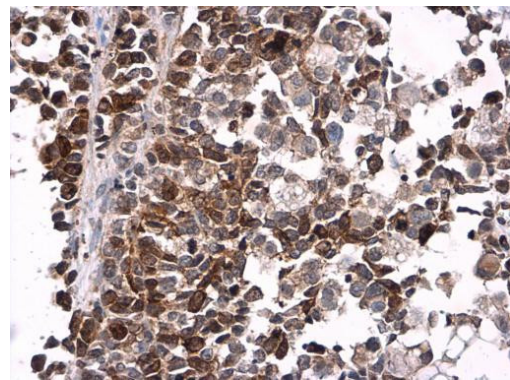
Positive Control: HeLa (untreated), HeLa (2mM double thymidine treatment and recovery for 3.5hr), HeLa (2mM double thymidine treatment and recovery for 12hr), HeLa (100 ng/mL Nocodazole treatment for 24hr), Rat-2 (untreated), Rat-2 (100 ng /mL Nocodazole treatment for 24.

Store product as a concentrated solution. Centrifuge briefly prior to opening the vial.

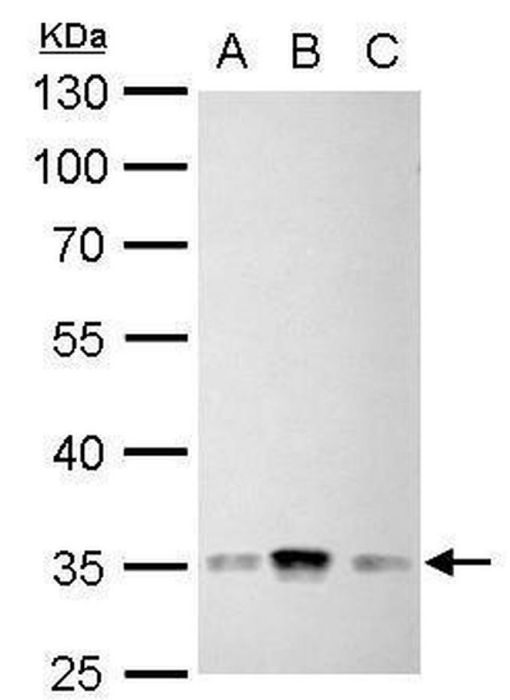
Product Images For Phospho-CDK1 (Tyr15) Polyclonal Antibody



Phospho-CDK1 (Tyr15) Antibody (PA5-85508) in IHC (P)
Phospho-CDK1 (Tyr15) Polyclonal Antibody detects CDC2 (phospho Tyr15) protein at cytoplasm in human endometrial carcinoma by immunohistochemical analysis. Sample: Paraffin-embedded human endometrial carcinoma. Phospho-CDK1 (Tyr15) Polyclonal Antibody (Product # PA5-85508) diluted at 1:500. Antigen Retrieval: Citrate buffer, pH 6.0, 15 min.



Phospho-CDK1 (Tyr15) Antibody (PA5-85508) in IHC (P)
Immunohistochemistry analysis of Phospho-CDC2 (Tyr15) in paraffin-embedded human endometrial carcinoma using Phospho-CDC2 (Tyr15) polyclonal antibody (Product # PA5-85508) at a dilution of 1:500.



Phospho-CDK1 (Tyr15) Antibody (PA5-85508) in WB
Western blot analysis of Phospho-CDC2 (Tyr15) in A) HeLa whole cell lysate (untreated), B) HeLa whole cell lysate (2 mM double thymidine treatment and recovery for 3.5hr), C) HeLa whole cell lysate (2mM double thymidine treatment and recovery for 12hr) using Phospho-CDC2 (Tyr15) polyclonal antibody (Product # PA5-85508) using 30 µg of sample at a dilution of 1:1000. Prior to incubation with primary antibody, the sample was separated on 10% SDS-PAGE.

View more figures on thermofisher.com

For Research Use Only. Not for use in diagnostic procedures. Not for resale without express authorization. Products are warranted to operate or perform substantially in conformance with published Product specifications in effect at the time of sale, as set forth in the Production documentation, specifications and/or accompanying package inserts ("Documentation"). No claim of suitability for use in applications regulated by FDA is made. The warranty provided herein is valid only when used by properly trained individuals. Unless otherwise stated in the Documentation, this warranty is limited to one year from date of shipment when the Product is subjected to normal, proper and intended usage. This warranty does not extend to anyone other than the Buyer. Any model or sample furnished to Buyer is merely illustrative of the general type and quality of goods and does not represent that any Product will conform to such model or sample. NO OTHER WARRANTIES, EXPRESS OR IMPLIED, ARE GRANTED INCLUDING WITHOUT LIMITATION, IMPLIED WARRANTIES OF MERCHANTABILITY, FITNESS FOR ANY PARTICULAR PURPOSE, OR NON INFRINGEMENT. BUYER'S EXCLUSIVE REMEDY FOR NON-CONFORMING PRODUCTS DURING THE WARRANTY PERIOD IS LIMITED TO REPAIR, REPLACEMENT OF OR REFUND FOR THE NON-CONFORMING PRODUCT(S) AT SELLER'S SOLE OPTION. THERE IS NO OBLIGATION TO REPAIR, REPLACE OR REFUND FOR PRODUCTS AS THE RESULT OF (I) ACCIDENT, DISASTER OR EVENT OF FORCE MAJEURE, (II) MISUSE, FAULT OR NEGLIGENCE OF OR BY BUYER, (III) USE OF THE PRODUCTS IN A MANNER FOR WHICH THEY WERE NOT DESIGNED, OR (IV) IMPROPER STORAGE AND HANDLING OF THE PRODUCTS. Unless otherwise expressly stated on the Product or in the documentation accompanying the Product, the Product is intended for research only and is not to be used for any other purpose, including without limitation, unauthorized commercial uses, in vitro diagnostic uses, ex vivo or in vivo therapeutic uses, or any type of consumption by or application to human or animals.