

CXCL12 Polyclonal Antibody

Product Details	
Size	100 µL
Species Reactivity	Human, Mouse, Rat
Published Species	Rat, Mouse
Host/Isotype	Rabbit / IgG
Class	Polyclonal
Type	Antibody
Conjugate	Unconjugated
Immunogen	A synthetic peptide corresponding to a sequence within amino acids 40-93 of human CXCL12 (NP_0006001)
Form	Liquid
Concentration	2.68 mg/mL
Purification	Affinity Chromatography
Storage buffer	PBS, pH 7.3, with 50% glycerol
Contains	0.05% ProClin 300
Storage conditions	-20° C, Avoid Freeze/Thaw Cycles
RRID	AB_2805365

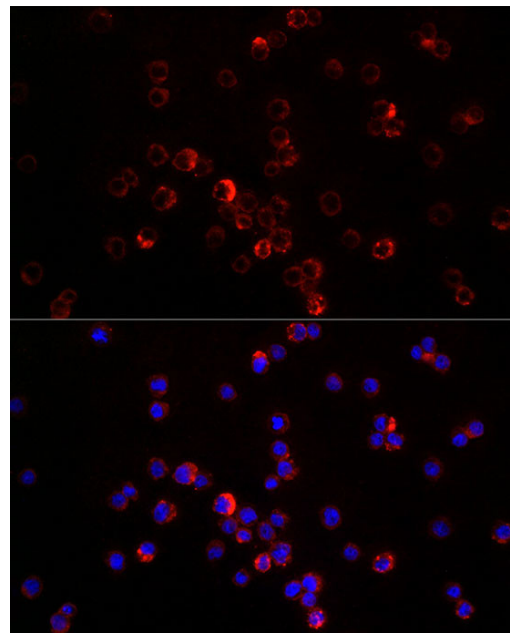
Applications	Tested Dilution	Publications
Western Blot (WB)	1:500-1:1,000	-
Immunohistochemistry (IHC)	-	1 Publication
Immunohistochemistry (Paraffin) (IHC (P))	1:100-1:200	-
Immunocytochemistry (ICC/IF)	1:100-1:200	1 Publication

Product Specific Information

Immunogen sequence: ARANVKHLKI LNTPNCALQI VARLKNNNRQ VCIDPKLKWI QEYLEKALNK RFKM

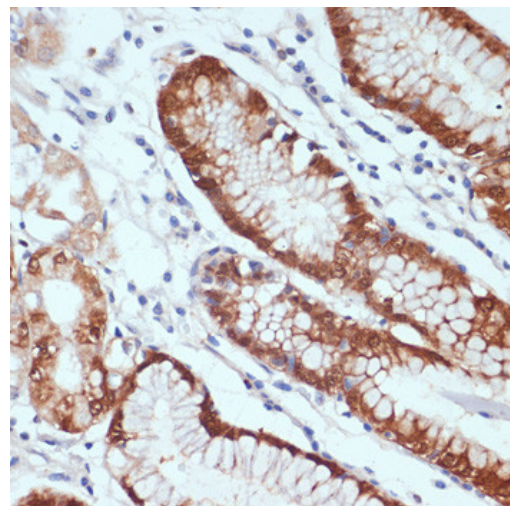
Positive Samples: NCI-H292

Product Images For CXCL12 Polyclonal Antibody



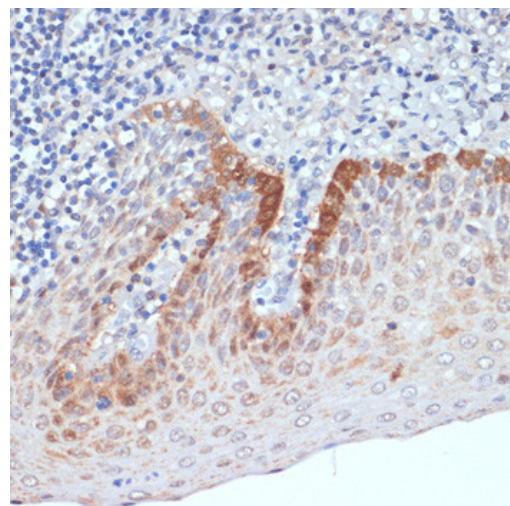
CXCL12 Antibody (PA5-89116) in ICC/IF

Immunofluorescence analysis of CXCL12 in THP-1 cells. Samples were incubated with CXCL12 Polyclonal antibody (Product # PA5-89116) using a dilution of 1:200. Blue: DAPI for nuclear staining.



CXCL12 Antibody (PA5-89116) in IHC (P)

Immunohistochemistry analysis of CXCL12 in paraffin-embedded human stomach. Samples were incubated with CXCL12 Polyclonal antibody (Product # PA5-89116) using a dilution of 1:100 (40x lens). Perform microwave antigen retrieval with 10 mM PBS buffer pH 7.2 before commencing with IHC staining protocol.



CXCL12 Antibody (PA5-89116) in IHC (P)

Immunohistochemistry analysis of CXCL12 in paraffin-embedded human tonsil. Samples were incubated with CXCL12 Polyclonal antibody (Product # PA5-89116) using a dilution of 1:100 (40x lens). Perform microwave antigen retrieval with 10 mM PBS buffer pH 7.2 before commencing with IHC staining protocol.

[View more figures on thermofisher.com](https://www.thermofisher.com)

Immunohistochemistry (1)

<p>PloS one</p> <p>Systemically injected bone marrow mononuclear cells specifically home to axially vascularized tissue engineering constructs.</p> <p>"PA5-89116 was used in Immunohistochemistry to show that, at the examined time point, the AVL constructs can attract BMMNCs in a mechanism probably related to the hypoxia associated with a robust tissue formation."</p> <p>Authors: Eweida A,Flechtenmacher S,Sandberg E,Schulte M,Schmidt VJ,Kneser U,Harhaus L</p>	<p>Year 2023</p> <p>Species Rat</p> <p>Dilution 1:100</p>
---	--

Immunocytochemistry (1)

<p>Endocrinology</p> <p>Vitamin D Regulates CXCL12/CXCR4 and Epithelial-to-Mesenchymal Transition in a Model of Breast Cancer Metastasis to Lung.</p> <p>"PA5-89116 was used in Immunocytochemistry-immunoflourescence to indicate an involvement of vitamin D in mammary cancer "seed" (primary tumor cell) and "soil" (metastatic site) and link vitamin D deficiency to epithelial-to-mesenchymal transition (EMT), CXCL12/CXCR4 signaling, and accelerated metastasis, suggesting vitamin D repleteness in breast cancer patients could enhance the efficacy of co-administered therapies in preventing spread to distant organs."</p> <p>Authors: Li J,Luco AL,Camirand A,St-Arnaud R,Kremer R</p>	<p>Year 2021</p> <p>Species Mouse</p>
--	---

For Research Use Only. Not for use in diagnostic procedures. Not for resale without express authorization. Products are warranted to operate or perform substantially in conformance with published Product specifications in effect at the time of sale, as set forth in the Production documentation, specifications and/or accompanying package inserts ("Documentation"). No claim of suitability for use in applications regulated by FDA is made. The warranty provided herein is valid only when used by properly trained individuals. Unless otherwise stated in the Documentation, this warranty is limited to one year from date of shipment when the Product is subjected to normal, proper and intended usage. This warranty does not extend to anyone other than the Buyer. Any model or sample furnished to Buyer is merely illustrative of the general type and quality of goods and does not represent that any Product will conform to such model or sample. NO OTHER WARRANTIES, EXPRESS OR IMPLIED, ARE GRANTED INCLUDING WITHOUT LIMITATION, IMPLIED WARRANTIES OF MERCHANTABILITY, FITNESS FOR ANY PARTICULAR PURPOSE, OR NON INFRINGEMENT. BUYER'S EXCLUSIVE REMEDY FOR NON-CONFORMING PRODUCTS DURING THE WARRANTY PERIOD IS LIMITED TO REPAIR, REPLACEMENT OF OR REFUND FOR THE NON-CONFORMING PRODUCT(S) AT SELLER'S SOLE OPTION. THERE IS NO OBLIGATION TO REPAIR, REPLACE OR REFUND FOR PRODUCTS AS THE RESULT OF (I) ACCIDENT, DISASTER OR EVENT OF FORCE MAJEURE, (II) MISUSE, FAULT OR NEGLIGENCE OF OR BY BUYER, (III) USE OF THE PRODUCTS IN A MANNER FOR WHICH THEY WERE NOT DESIGNED, OR (IV) IMPROPER STORAGE AND HANDLING OF THE PRODUCTS. Unless otherwise expressly stated on the Product or in the documentation accompanying the Product, the Product is intended for research only and is not to be used for any other purpose, including without limitation, unauthorized commercial uses, in vitro diagnostic uses, ex vivo or in vivo therapeutic uses, or any type of consumption by or application to human or animals.