

# ErbB4 Polyclonal Antibody

| Product Details    |                                                                                                                                      |
|--------------------|--------------------------------------------------------------------------------------------------------------------------------------|
| Size               | 100 µg                                                                                                                               |
| Species Reactivity | Human, Mouse, Rat                                                                                                                    |
| Host/Isotype       | Rabbit / IgG                                                                                                                         |
| Class              | Polyclonal                                                                                                                           |
| Type               | Antibody                                                                                                                             |
| Conjugate          | Unconjugated                                                                                                                         |
| Immunogen          | A synthetic peptide corresponding to a sequence at the N-terminus of human ErbB 4, identical to the related rat and mouse sequences. |
| Form               | Lyophilized                                                                                                                          |
| Concentration      | 500 µg/mL                                                                                                                            |
| Purification       | Affinity chromatography                                                                                                              |
| Storage buffer     | 0.2mg sodium phosphate with 5mg BSA, 0.9mg NaCl                                                                                      |
| Contains           | 0.05mg sodium azide, 0.05mg thimerosal                                                                                               |
| Storage Conditions | Store at 4°C short term. For long term storage, store at -20°C, avoiding freeze/thaw cycles.                                         |
| RRID               | AB_2806881                                                                                                                           |

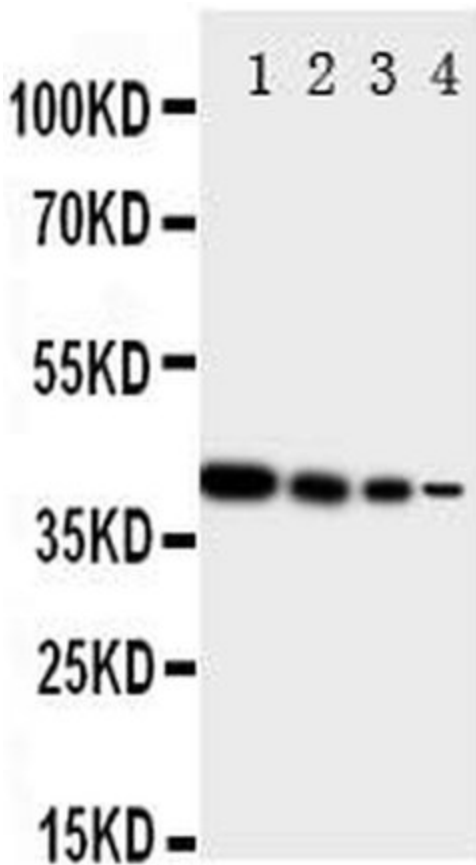
| Applications      | Tested Dilution | Publications |
|-------------------|-----------------|--------------|
| Western Blot (WB) | 0.1-0.5 µg/mL   | -            |

## Product Specific Information

Synthetic peptide sequence: 35-51aa, KLSSLSDLEQQYRALRK.

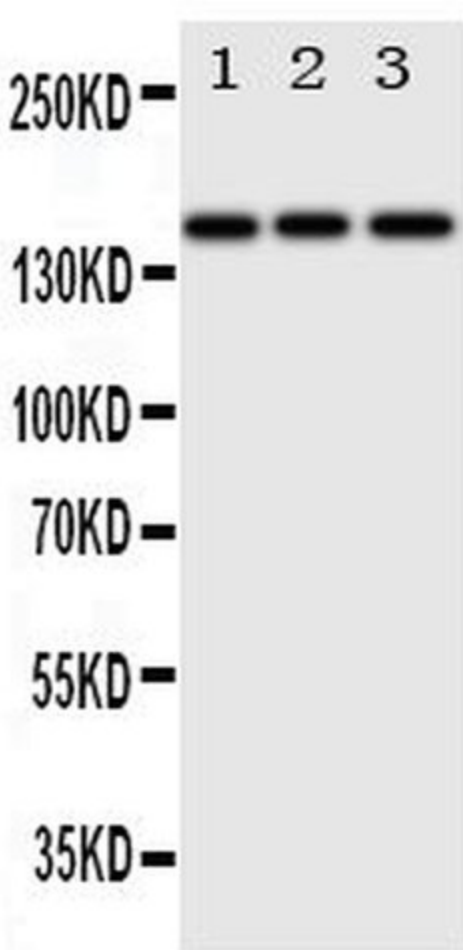
Reconstitution information: Add 0.2 mL of distilled water will yield a concentration of 500 µg/mL.

## Product Images For ErbB4 Polyclonal Antibody



**ErbB4 Antibody (PA5-95075) in WB**

Western blot analysis of ErbB4 in Lane 1: recombinant human ERBB4 protein (10 ng), Lane 2: recombinant human ERBB4 protein (5 ng), Lane 3: recombinant human ERBB4 protein (2.5 ng), Lane 4: recombinant human ERBB4 protein (1.25 ng). Samples were incubated with ErbB4 polyclonal antibody (Product # PA5-95075).

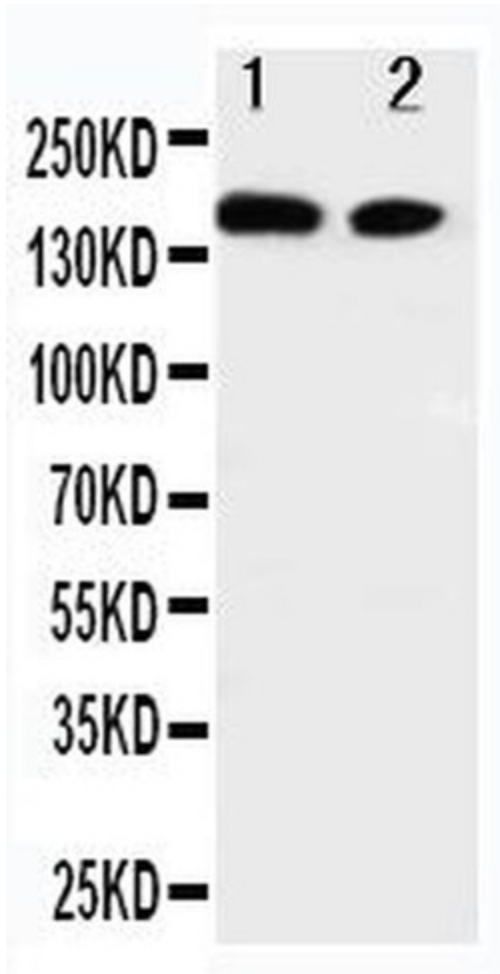


**ErbB4 Antibody (PA5-95075) in WB**

Western blot analysis of ErbB4 in Lane 1: HeLa cell lysate, Lane 2: U87 cell lysate, Lane 3: NEURO cell lysate. Samples were incubated with ErbB4 polyclonal antibody (Product # PA5-95075).

### ErbB4 Antibody (PA5-95075) in WB

Western blot analysis of ErbB4 in Lane 1: A549 cell lysate, Lane 2: HeLa cell lysate. Samples were incubated with ErbB4 polyclonal antibody (Product # PA5-95075).



For Research Use Only. Not for use in diagnostic procedures. Not for resale without express authorization. Products are warranted to operate or perform substantially in conformance with published Product specifications in effect at the time of sale, as set forth in the Production documentation, specifications and/or accompanying package inserts ("Documentation"). No claim of suitability for use in applications regulated by FDA is made. The warranty provided herein is valid only when used by properly trained individuals. Unless otherwise stated in the Documentation, this warranty is limited to one year from date of shipment when the Product is subjected to normal, proper and intended usage. This warranty does not extend to anyone other than the Buyer. Any model or sample furnished to Buyer is merely illustrative of the general type and quality of goods and does not represent that any Product will conform to such model or sample. NO OTHER WARRANTIES, EXPRESS OR IMPLIED, ARE GRANTED INCLUDING WITHOUT LIMITATION, IMPLIED WARRANTIES OF MERCHANTABILITY, FITNESS FOR ANY PARTICULAR PURPOSE, OR NON INFRINGEMENT. BUYER'S EXCLUSIVE REMEDY FOR NON-CONFORMING PRODUCTS DURING THE WARRANTY PERIOD IS LIMITED TO REPAIR, REPLACEMENT OF OR REFUND FOR THE NON-CONFORMING PRODUCT(S) AT SELLER'S SOLE OPTION. THERE IS NO OBLIGATION TO REPAIR, REPLACE OR REFUND FOR PRODUCTS AS THE RESULT OF (I) ACCIDENT, DISASTER OR EVENT OF FORCE MAJEURE, (II) MISUSE, FAULT OR NEGLIGENCE OF OR BY BUYER, (III) USE OF THE PRODUCTS IN A MANNER FOR WHICH THEY WERE NOT DESIGNED, OR (IV) IMPROPER STORAGE AND HANDLING OF THE PRODUCTS. Unless otherwise expressly stated on the Product or in the documentation accompanying the Product, the Product is intended for research only and is not to be used for any other purpose, including without limitation, unauthorized commercial uses, in vitro diagnostic uses, ex vivo or in vivo therapeutic uses, or any type of consumption by or application to human or animals.