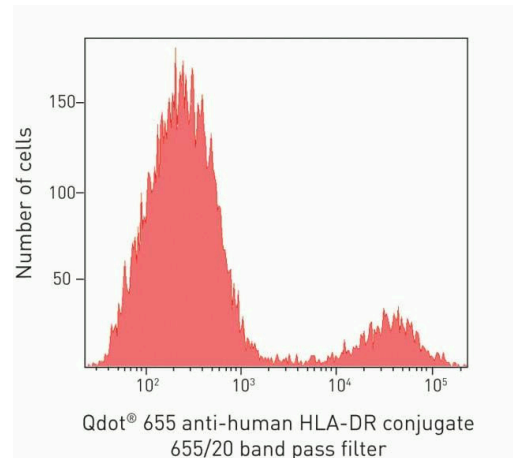


# HLA-DR Monoclonal Antibody (TU36), Qdot™ 655

Product Details	
Size	25 µL
Species Reactivity	Human
Published Species	Human
Host/Isotype	Mouse / IgG2b
Class	Monoclonal
Type	Antibody
Clone	TU36
Conjugate	Qdot™ 655
Excitation/Emission Max	300/654 nm
Immunogen	Human HLA-DR
Form	Liquid
Purification	purified
Storage buffer	0.05M borate, pH 8.3, with 1M betaine
Contains	0.05% sodium azide
Storage conditions	4° C
RRID	AB_2556514

Applications	Tested Dilution	Publications
Flow Cytometry (Flow)	Assay-dependent	6 Publications
Miscellaneous PubMed (Misc)	-	2 Publications

## Product Images For HLA-DR Monoclonal Antibody (TU36), Qdot™ 655



**HLA-DR Antibody (Q22158) in Flow**  
Histogram of gated human lymphocytes labeled with HLA-DR Mouse Anti-Human mAb (clone Tu36), Qdot® 655 Conjugate. Sample was acquired and analyzed using 405 nm excitation and a 660/20 band pass emission filter using a BD LSR II flow cytometer (BD Biosciences, San Jose, CA).

## Flow Cytometry (6)

<p>eLife</p> <p><b>mRNA vaccine-induced T cells respond identically to SARS-CoV-2 variants of concern but differ in longevity and homing properties depending on prior infection status.</b></p> <p>"Q22158 was used in flow cytometry to provide reassurance that vaccine-elicited T cells respond robustly to emerging viral variants, confirm that convalescents may not need a second vaccine dose, and suggest that vaccinated convalescents may have more persistent nasopharynx-homing SARS-CoV-2-specific T cells compared to their infection-naïve counterparts."</p> <p>Authors: Neidleman J,Luo X,McGregor M,Xie G,Murray V,Greene WC,Lee SA,Roan NR</p>	<p>Year 2021</p> <p>Species Human</p>
<p>Cell reports</p> <p><b>Distinctive features of SARS-CoV-2-specific T cells predict recovery from severe COVID-19.</b></p> <p>"Q22158 was used in Flow Cytometry to define the features of T cells from individuals hospitalized in the ICU for COVID-19, including some that recovered and some that died from disease."</p> <p>Authors: Neidleman J,Luo X,George AF,McGregor M,Yang J,Yun C,Murray V,Gill G,Greene WC,Vasquez J,Lee SA,Ghosn E,Lynch KL,Roan NR</p>	<p>Year 2021</p> <p>Species Human</p>

[View more Flow references on thermofisher.com](#)

## Miscellaneous PubMed (2)

<p>Cell reports. Medicine</p> <p><b>SARS-CoV-2-Specific T Cells Exhibit Phenotypic Features of Helper Function, Lack of Terminal Differentiation, and High Proliferation Potential.</b></p> <p>"Q22158 was used in Mass Spectrometry to show that long-lived and robust T cell immunity is generated following natural SARS-CoV-2 infection and support an important role of SARS-CoV-2-specific T cells in host control of COVID-19."</p> <p>Authors: Neidleman J,Luo X,Frouard J,Xie G,Gill G,Stein ES,McGregor M,Ma T,George AF,Kosters A,Greene WC,Vasquez J,Ghosn E,Lee S,Roan NR</p>	<p>Year 2020</p> <p>Species Human</p>
<p>Cytometry. Part B, Clinical cytometry</p> <p><b>Multiparameter Single Cell Profiling of Airway Inflammatory Cells.</b></p> <p>"Q22158 was used in flow cytometry to perform a Cytometry by Time-Of-Flight analysis on primary airway samples obtained from well-characterized patients with asthma and cystic fibrosis"</p> <p>Authors: Yao Y,Welp T,Liu Q,Niu N,Wang X,Britto CJ,Krishnaswamy S,Chupp GL,Montgomery RR</p>	<p>Year 2017</p> <p>Species Human</p>

## More applications with references on thermofisher.com

For Research Use Only. Not for use in diagnostic procedures. Not for resale without express authorization. Products are warranted to operate or perform substantially in conformance with published Product specifications in effect at the time of sale, as set forth in the Production documentation, specifications and/or accompanying package inserts ("Documentation"). No claim of suitability for use in applications regulated by FDA is made. The warranty provided herein is valid only when used by properly trained individuals. Unless otherwise stated in the Documentation, this warranty is limited to one year from date of shipment when the Product is subjected to normal, proper and intended usage. This warranty does not extend to anyone other than the Buyer. Any model or sample furnished to Buyer is merely illustrative of the general type and quality of goods and does not represent that any Product will conform to such model or sample. NO OTHER WARRANTIES, EXPRESS OR IMPLIED, ARE GRANTED INCLUDING WITHOUT LIMITATION, IMPLIED WARRANTIES OF MERCHANTABILITY, FITNESS FOR ANY PARTICULAR PURPOSE, OR NON INFRINGEMENT. BUYER'S EXCLUSIVE REMEDY FOR NON-CONFORMING PRODUCTS DURING THE WARRANTY PERIOD IS LIMITED TO REPAIR, REPLACEMENT OF OR REFUND FOR THE NON-CONFORMING PRODUCT(S) AT SELLER'S SOLE OPTION. THERE IS NO OBLIGATION TO REPAIR, REPLACE OR REFUND FOR PRODUCTS AS THE RESULT OF (I) ACCIDENT, DISASTER OR EVENT OF FORCE MAJEURE, (II) MISUSE, FAULT OR NEGLIGENCE OF OR BY BUYER, (III) USE OF THE PRODUCTS IN A MANNER FOR WHICH THEY WERE NOT DESIGNED, OR (IV) IMPROPER STORAGE AND HANDLING OF THE PRODUCTS. Unless otherwise expressly stated on the Product or in the documentation accompanying the Product, the Product is intended for research only and is not to be used for any other purpose, including without limitation, unauthorized commercial uses, in vitro diagnostic uses, ex vivo or in vivo therapeutic uses, or any type of consumption by or application to human or animals.