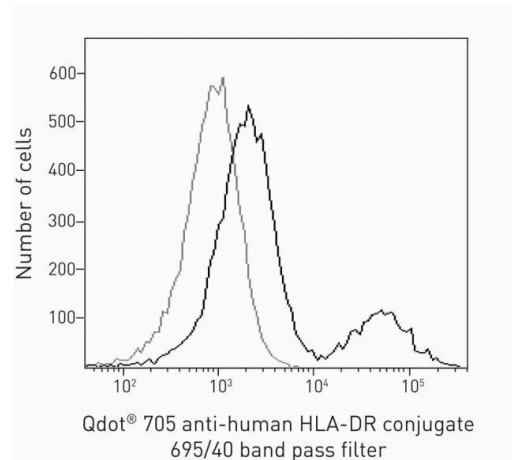


HLA-DR Monoclonal Antibody (TU36), Qdot™ 705

Product Details	
Size	25 µL
Species Reactivity	Human
Published Species	Human
Host/Isotype	Mouse / IgG2b
Class	Monoclonal
Type	Antibody
Clone	TU36
Conjugate	Qdot™ 705
Excitation/Emission Max	300/702 nm
Immunogen	Human HLA-DR
Form	Liquid
Purification	purified
Storage buffer	0.05M borate, pH 8.3, with 1M betaine
Contains	0.05% sodium azide
Storage conditions	4° C
RRID	AB_2556515

Applications	Tested Dilution	Publications
Flow Cytometry (Flow)	Assay-dependent	1 Publication

Product Images For HLA-DR Monoclonal Antibody (TU36), Qdot™ 705



HLA-DR Antibody (Q22159) in Flow
Histogram overlay plot of gated human lymphocytes, the black line represents cells labeled with HLA-DR Mouse Anti-Human mAb (clone Tu36), Qdot® 705 Conjugate and the gray line represents unstained cells. Samples were acquired and analyzed using 405 nm excitation and a 695/40 band pass emission filter using the Attune® Acoustic Cytometer Blue/Violet option.

Flow Cytometry (1)

Journal of immunology research	Year 2021
Increased TNF- Initiates Cytoplasmic Vacuolization in Whole Blood Coculture with Dengue Virus.	Species Human
"Q22159 was used in Flow Cytometry to demonstrate the potential hematological damage caused by ex vivo DENV-induced TNF-."	
Authors: Satria RD,Huang TW,Jhan MK,Shen TJ,Tseng PC,Wang YT,Yang ZY,Hsing CH,Lin CF	

For Research Use Only. Not for use in diagnostic procedures. Not for resale without express authorization. Products are warranted to operate or perform substantially in conformance with published Product specifications in effect at the time of sale, as set forth in the Production documentation, specifications and/or accompanying package inserts ("Documentation"). No claim of suitability for use in applications regulated by FDA is made. The warranty provided herein is valid only when used by properly trained individuals. Unless otherwise stated in the Documentation, this warranty is limited to one year from date of shipment when the Product is subjected to normal, proper and intended usage. This warranty does not extend to anyone other than the Buyer. Any model or sample furnished to Buyer is merely illustrative of the general type and quality of goods and does not represent that any Product will conform to such model or sample. NO OTHER WARRANTIES, EXPRESS OR IMPLIED, ARE GRANTED INCLUDING WITHOUT LIMITATION, IMPLIED WARRANTIES OF MERCHANTABILITY, FITNESS FOR ANY PARTICULAR PURPOSE, OR NON INFRINGEMENT. BUYER'S EXCLUSIVE REMEDY FOR NON-CONFORMING PRODUCTS DURING THE WARRANTY PERIOD IS LIMITED TO REPAIR, REPLACEMENT OF OR REFUND FOR THE NON-CONFORMING PRODUCT(S) AT SELLER'S SOLE OPTION. THERE IS NO OBLIGATION TO REPAIR, REPLACE OR REFUND FOR PRODUCTS AS THE RESULT OF (I) ACCIDENT, DISASTER OR EVENT OF FORCE MAJEURE, (II) MISUSE, FAULT OR NEGLIGENCE OF OR BY BUYER, (III) USE OF THE PRODUCTS IN A MANNER FOR WHICH THEY WERE NOT DESIGNED, OR (IV) IMPROPER STORAGE AND HANDLING OF THE PRODUCTS. Unless otherwise expressly stated on the Product or in the documentation accompanying the Product, the Product is intended for research only and is not to be used for any other purpose, including without limitation, unauthorized commercial uses, in vitro diagnostic uses, ex vivo or in vivo therapeutic uses, or any type of consumption by or application to human or animals.