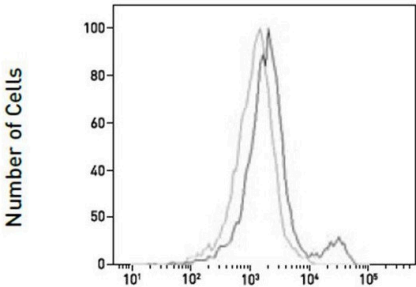


# CD4 Monoclonal Antibody (RM4-5), Qdot™ 800

Product Details	
Size	25 µL
Species Reactivity	Mouse
Published Species	Mouse
Host/Isotype	Rat / IgG2a
Class	Monoclonal
Type	Antibody
Clone	RM4-5
Conjugate	Qdot™ 800
Excitation/Emission Max	300/792 nm
Immunogen	Mouse CD4
Form	Liquid
Purification	purified
Storage buffer	0.05M borate, pH 8.3, with 1M betaine
Contains	0.05% sodium azide
Storage conditions	4° C
RRID	AB_2556521

Applications	Tested Dilution	Publications
Flow Cytometry (Flow)	Assay-dependent	1 Publication

## Product Images For CD4 Monoclonal Antibody (RM4-5), Qdot™ 800



Qdot® 800 anti-mouse CD4 conjugate  
780/60 band pass filter

**CD4 Antibody (Q22165) in Flow**  
Samples were acquired and analyzed using 405 nm excitation specified band pass emission filter on an Attune® Acoustic Focusing Cytometer. The black line histogram represent cells stained with anti-human CD4 antibody conjugate, and the gray line represents unstained cells.

Flow Cytometry (1)

Nature	Year 2022
Clonally expanded CD8 T cells characterize amyotrophic lateral sclerosis-4.	Species Mouse
"Q22165 was used in Flow cytometry/Cell sorting to provide evidence of an antigen-specific CD8 T cell response in ALS4, which could be used to unravel disease mechanisms and as a potential biomarker of disease state."  Authors: Campisi L,Chizari S,Ho JSY,Gromova A,Arnold FJ,Mosca L,Mei X,Fstkchyan Y,Torre D,Beharry C,Garcia-Forn M,Jiménez-Alcázar M,Korobeynikov VA,Prazich J,Fayad ZA,Seldin MM,De Rubeis S,Bennett CL,Ostrow LW,Lunetta C,Squatrito M,Byun M,Shneider NA,Jiang N,La Spada AR,Marazzi I	Dilution 1:400

For Research Use Only. Not for use in diagnostic procedures. Not for resale without express authorization. Products are warranted to operate or perform substantially in conformance with published Product specifications in effect at the time of sale, as set forth in the Production documentation, specifications and/or accompanying package inserts ("Documentation"). No claim of suitability for use in applications regulated by FDA is made. The warranty provided herein is valid only when used by properly trained individuals. Unless otherwise stated in the Documentation, this warranty is limited to one year from date of shipment when the Product is subjected to normal, proper and intended usage. This warranty does not extend to anyone other than the Buyer. Any model or sample furnished to Buyer is merely illustrative of the general type and quality of goods and does not represent that any Product will conform to such model or sample. NO OTHER WARRANTIES, EXPRESS OR IMPLIED, ARE GRANTED INCLUDING WITHOUT LIMITATION, IMPLIED WARRANTIES OF MERCHANTABILITY, FITNESS FOR ANY PARTICULAR PURPOSE, OR NON INFRINGEMENT. BUYER'S EXCLUSIVE REMEDY FOR NON-CONFORMING PRODUCTS DURING THE WARRANTY PERIOD IS LIMITED TO REPAIR, REPLACEMENT OF OR REFUND FOR THE NON-CONFORMING PRODUCT(S) AT SELLER'S SOLE OPTION. THERE IS NO OBLIGATION TO REPAIR, REPLACE OR REFUND FOR PRODUCTS AS THE RESULT OF (I) ACCIDENT, DISASTER OR EVENT OF FORCE MAJEURE, (II) MISUSE, FAULT OR NEGLIGENCE OF OR BY BUYER, (III) USE OF THE PRODUCTS IN A MANNER FOR WHICH THEY WERE NOT DESIGNED, OR (IV) IMPROPER STORAGE AND HANDLING OF THE PRODUCTS. Unless otherwise expressly stated on the Product or in the documentation accompanying the Product, the Product is intended for research only and is not to be used for any other purpose, including without limitation, unauthorized commercial uses, in vitro diagnostic uses, ex vivo or in vivo therapeutic uses, or any type of consumption by or application to human or animals.