

Human Serum Albumin Polyclonal Antibody

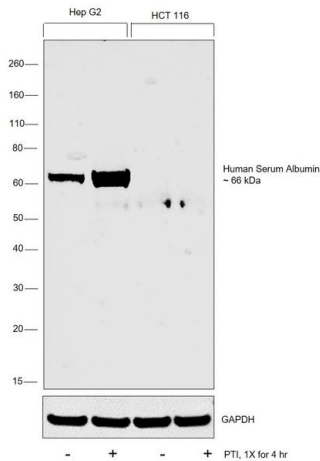
Product Details	
Size	50 µg
Species Reactivity	Human
Published Species	Human
Host/Isotype	Rabbit / IgG
Class	Polyclonal
Type	Antibody
Conjugate	Unconjugated
Immunogen	Purified human serum albumin
Form	Liquid
Concentration	1 mg/mL
Purification	Antigen affinity chromatography
Storage buffer	PBS, pH 7.4
Contains	0.02% sodium azide
Storage conditions	Store at 4°C short term. For long term storage, store at -20°C, avoiding freeze/thaw cycles.
RRID	AB_2225773

Applications	Tested Dilution	Publications
Western Blot (WB)	1:500-1:2,000	1 Publication
ELISA (ELISA)	1:10,000-1:50,000	-
Immunodiffusion (IDF)	Assay-dependent	-
Immunoelectrophoresis (IE)	Assay-dependent	-

Product Specific Information

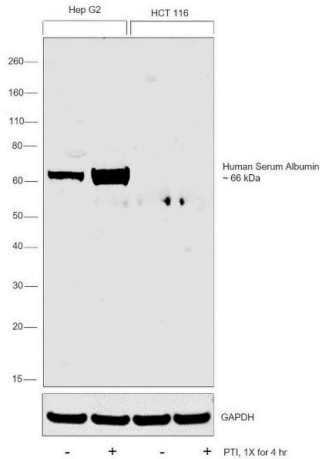
Purity: IgG is > 98.8% total protein by SDS-PAGE. Becker titer results showed > 3.0 mg/mL (antigen/antibody).

Product Images For Human Serum Albumin Polyclonal Antibody



Human Serum Albumin Antibody (R0101-1D) in WB

Western blot was performed using Anti-Human Serum Albumin Polyclonal Antibody(Product # R0101-1D) and a 66kDa band corresponding to Human Serum Albumin was observed across in Hep G2 when compared to HCT 116 which is reported to be a low expressing model. Whole cell extracts (30 µg lysate) of Hep G2 (Lane 1), Hep G2 treated with PTI (1X for 4hrs) (Lane 2), HCT 116 (Lane 3), HCT 116 treated with PTI (1X for 4hrs) (Lane 4) were electrophoresed using NuPAGE™ 4-12% Bis-Tris Protein Gel (Product # NP0321BOX). Resolved proteins were then transferred onto a Nitrocellulose membrane (Product # IB23001) by iBlot® 2 Dry Blotting System (Product # IB21001). The blot was probed with the primary antibody (1:1000 dilution) and detected by chemiluminescence with Goat anti-Rabbit IgG (Heavy Chain) Superclonal™ Recombinant Secondary Antibody, HRP (Product # A27036, 1:4000 dilution) using the iBright FL 1000 (Product # A32752). Chemiluminescent detection was performed using Novex® ECL Chemiluminescent Substrate Reagent Kit (Product # WP20005).



Human Serum Albumin Antibody (R0101-1D)

Antibody specificity was demonstrated by detection of differential basal expression of the target across cell lines owing to their inherent genetic constitution. Relative expression of Human Serum Albumin was observed in Hep G2 when compared to HCT 116 using Anti-Human Serum Albumin Polyclonal Antibody (Product # R0101-1D) in Western Blot. {RE}

1 Reference

Western Blot (1)

The Journal of biological chemistry	Year 2017
Aggregation of Full-length Immunoglobulin Light Chains from Systemic Light Chain Amyloidosis (AL) Patients Is Remodeled by Epigallocatechin-3-gallate.	Species Human
"R01011D was used in western blot to assess the amyloid formation of patient-derived light chains and their susceptibility to the polyphenol Epigallocatechin-3-gallate in vitro"	Dilution 1:2000
Authors: Andrich K,Hegenbart U,Kimmich C,Kedia N,Bergen HR,Schönland S,Wanker E,Bieschke J	

For Research Use Only. Not for use in diagnostic procedures. Not for resale without express authorization. Products are warranted to operate or perform substantially in conformance with published Product specifications in effect at the time of sale, as set forth in the Production documentation, specifications and/or accompanying package inserts ("Documentation"). No claim of suitability for use in applications regulated by FDA is made. The warranty provided herein is valid only when used by properly trained individuals. Unless otherwise stated in the Documentation, this warranty is limited to one year from date of shipment when the Product is subjected to normal, proper and intended usage. This warranty does not extend to anyone other than the Buyer. Any model or sample furnished to Buyer is merely illustrative of the general type and quality of goods and does not represent that any Product will conform to such model or sample. NO OTHER WARRANTIES, EXPRESS OR IMPLIED, ARE GRANTED INCLUDING WITHOUT LIMITATION, IMPLIED WARRANTIES OF MERCHANTABILITY, FITNESS FOR ANY PARTICULAR PURPOSE, OR NON INFRINGEMENT. BUYER'S EXCLUSIVE REMEDY FOR NON-CONFORMING PRODUCTS DURING THE WARRANTY PERIOD IS LIMITED TO REPAIR, REPLACEMENT OF OR REFUND FOR THE NON-CONFORMING PRODUCT(S) AT SELLER'S SOLE OPTION. THERE IS NO OBLIGATION TO REPAIR, REPLACE OR REFUND FOR PRODUCTS AS THE RESULT OF (I) ACCIDENT, DISASTER OR EVENT OF FORCE MAJEURE, (II) MISUSE, FAULT OR NEGLIGENCE OF OR BY BUYER, (III) USE OF THE PRODUCTS IN A MANNER FOR WHICH THEY WERE NOT DESIGNED, OR (IV) IMPROPER STORAGE AND HANDLING OF THE PRODUCTS. Unless otherwise expressly stated on the Product or in the documentation accompanying the Product, the Product is intended for research only and is not to be used for any other purpose, including without limitation, unauthorized commercial uses, in vitro diagnostic uses, ex vivo or in vivo therapeutic uses, or any type of consumption by or application to human or animals.