

beta-2 Microglobulin Polyclonal Antibody

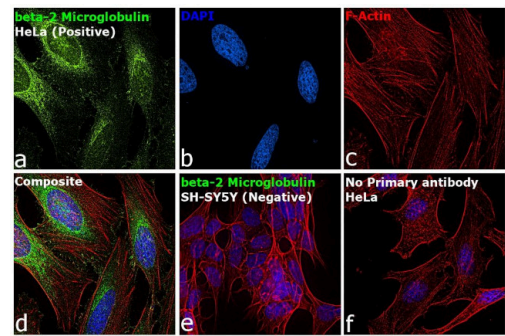
Product Details	
Size	50 µg
Species Reactivity	Human
Host/Isotype	Rabbit / IgG
Class	Polyclonal
Type	Antibody
Conjugate	Unconjugated
Immunogen	Purified human beta-2-microglobulin
Form	Liquid
Concentration	1.0 mg/mL
Purification	Protein A
Storage buffer	20mM MES, pH 5.8
Contains	0.02% sodium azide
Storage conditions	Store at 4°C short term. For long term storage, store at -20°C, avoiding freeze/thaw cycles.
RRID	AB_2062748

Applications	Tested Dilution	Publications
Western Blot (WB)	1:1,000	-
Immunocytochemistry (ICC/IF)	1:100	-
ELISA (ELISA)	Assay-dependent	-
Immunodiffusion (IDF)	Assay-dependent	-
Immunoelectrophoresis (IE)	Assay-dependent	-

Product Specific Information

Purity: IgG is > 96.5% total protein by SDS-PAGE. Becker titer results showed > 0.330 mg/mL (antigen/antibody).

Product Images For beta-2 Microglobulin Polyclonal Antibody

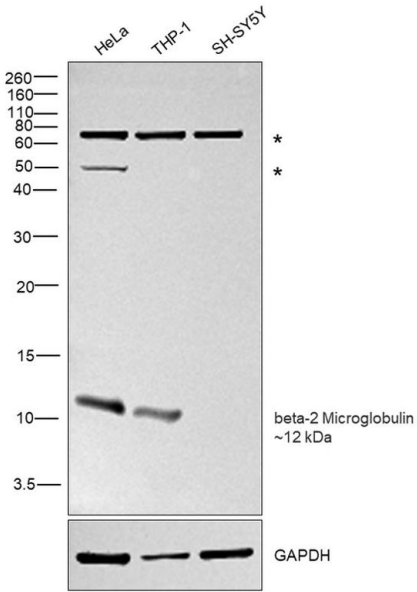


beta-2 Microglobulin Antibody (R0202-1E)

Antibody specificity was demonstrated by detection of differential basal expression of the target across cell models owing to their inherent genetic constitution. Immunofluorescence analysis using Anti-beta-2 Microglobulin Polyclonal Antibody (Product # R0202-1E), shows cytosolic expression in HeLa but no expression in SH-SY5Y cell line. {RE}

beta-2 Microglobulin Antibody (R0202-1E) in WB

Western blot was performed using Anti-beta-2 Microglobulin Polyclonal Antibody (Product # R0202-1E) and a 12kDa band corresponding to beta-2 Microglobulin was observed across all cell lines tested except for SH-SY5Y, which is reported to express low levels of beta-2 Microglobulin. Two uncharacterized bands (*) were also observed at ~50 and ~70kDa. Whole cell extracts (30 µg lysate) of HeLa (Lane 1), THP-1 (Lane 2) and SH-SY5Y (Lane 3) were electrophoresed using Novex™ 16% Tricine Protein Gel (Product # EC6695BOX). Resolved proteins were then transferred onto a Nitrocellulose membrane (Product # IB23001) by iBlot® 2 Dry Blotting System (Product # IB21001). The blot was probed with the primary antibody (1:1000 dilution) and detected by chemiluminescence with Goat anti-Rabbit IgG (Heavy Chain) Superclonal™ Recombinant Secondary Antibody, HRP (Product # A27036, 1:4000 dilution) using the iBright FL 1000 (Product # A32752). Chemiluminescent detection was performed using SuperSignal™ West Dura Extended Duration Substrate (Product # 34076).



beta-2 Microglobulin Antibody (R0202-1E) in ICC/IF

Immunofluorescence analysis of beta-2 Microglobulin was performed using 70% confluent log phase HeLa cells. The cells were fixed with 4% paraformaldehyde for 10 minutes, permeabilized with 0.1% Triton™ X-100 for 45 minutes, and blocked with 2% BSA for 45 minutes at room temperature. The cells were labeled with beta-2 Microglobulin Polyclonal Antibody (Product # R0202-1E) at 1:100 dilution in 0.1% BSA, incubated at 4 degree celsius overnight and then labeled with Donkey anti-Rabbit IgG (H+L) Highly Cross-Adsorbed Secondary Antibody, Alexa Fluor Plus 488 (Product # A32790, 1:2000 dilution), for 45 minutes at room temperature (Panel a: Green). Nuclei (Panel b: Blue) were stained with ProLong™ Diamond Antifade Mountant with DAPI (Product # P36962). F-actin (Panel c: Red) was stained with Rhodamine Phalloidin (Product # R415, 1:300). Panel d represents the merged image showing cytosolic localization. Panel e represents SH-SY5Y cells showing no expression of beta-2 Microglobulin. Panel f represents control cells with no primary antibody to assess background. The images were captured at 60X magnification.

View more figures on thermofisher.com

For Research Use Only. Not for use in diagnostic procedures. Not for resale without express authorization. Products are warranted to operate or perform substantially in conformance with published Product specifications in effect at the time of sale, as set forth in the Production documentation, specifications and/or accompanying package inserts ("Documentation"). No claim of suitability for use in applications regulated by FDA is made. The warranty provided herein is valid only when used by properly trained individuals. Unless otherwise stated in the Documentation, this warranty is limited to one year from date of shipment when the Product is subjected to normal, proper and intended usage. This warranty does not extend to anyone other than the Buyer. Any model or sample furnished to Buyer is merely illustrative of the general type and quality of goods and does not represent that any Product will conform to such model or sample. NO OTHER WARRANTIES, EXPRESS OR IMPLIED, ARE GRANTED INCLUDING WITHOUT LIMITATION, IMPLIED WARRANTIES OF MERCHANTABILITY, FITNESS FOR ANY PARTICULAR PURPOSE, OR NON-INFRINGEMENT. BUYER'S EXCLUSIVE REMEDY FOR NON-CONFORMING PRODUCTS DURING THE WARRANTY PERIOD IS LIMITED TO REPAIR, REPLACEMENT OF OR REFUND FOR THE NON-CONFORMING PRODUCT(S) AT SELLER'S SOLE OPTION. THERE IS NO OBLIGATION TO REPAIR, REPLACE OR REFUND FOR PRODUCTS AS THE RESULT OF (i) ACCIDENT, DISASTER OR EVENT OF FORCE MAJEURE, (ii) MISUSE, FAULT OR NEGLIGENCE OF OR BY BUYER, (iii) USE OF THE PRODUCTS IN A MANNER FOR WHICH THEY WERE NOT DESIGNED, OR (iv) IMPROPER STORAGE AND HANDLING OF THE PRODUCTS. Unless otherwise expressly stated on the Product or in the documentation accompanying the Product, the Product is intended for research only and is not to be used for any other purpose, including without limitation, unauthorized commercial uses, in vitro diagnostic uses, ex vivo or in vivo therapeutic uses, or any type of consumption by or application to human or animals.