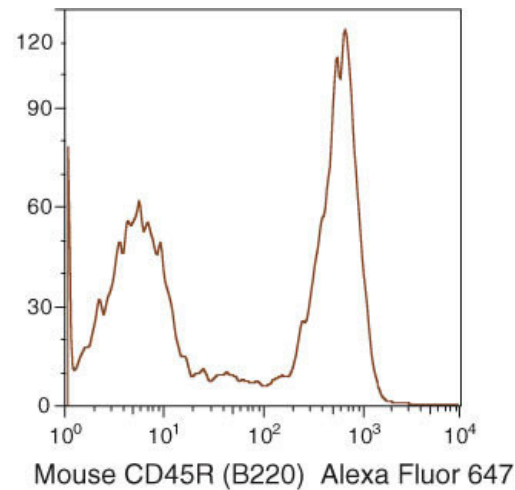


# CD45R Monoclonal Antibody (RA3-6B2), Alexa Fluor 647

Product Details	
Size	1 mL
Species Reactivity	Mouse
Published Species	Mouse
Host/Isotype	Rat / IgG2a, kappa
Class	Monoclonal
Type	Antibody
Clone	RA3-6B2
Conjugate	Alexa Fluor® 647
Immunogen	exon A-specific epitope on CD45
Form	Liquid
Storage conditions	4° C
RRID	AB_10373821

Applications	Tested Dilution	Publications
Flow Cytometry (Flow)	Assay-dependent	2 Publications

## Product Images For CD45R Monoclonal Antibody (RA3-6B2), Alexa Fluor 647



**CD45R Antibody (RM2621) in Flow**  
Fresh mouse splenocytes were stained using Alexa Fluor® 647 of rat anti-mouse CD45R (B220) antibody (clone: RA3-6B2). The negative control profiles represent unstained cells.

Flow Cytometry (2)

Frontiers in immunology	Year 2019
<b>Langerin<sup>+</sup> CD8<sup>+</sup> Dendritic Cells Drive Early CD8<sup>+</sup> T Cell Activation and IL-12 Production During Systemic Bacterial Infection.</b>	Species Mouse
"RM2621 was used in Flow cytometry/Cell sorting to investigate the impact of depleting langerin+ CD8+ dendritic cells in a murine model of intravenous infection with Mycobacterium bovis bacille Calmette-Guerin."	
Authors: Prendergast KA,Daniels NJ,Petersen TR,Hermans IF,Kirman JR	
Nature communications	Year 2012
<b>Ectopic expression of the histone methyltransferase Ezh2 in haematopoietic stem cells causes myeloproliferative disease.</b>	Species Mouse
"RM2621 was used in Flow cytometry/Cell sorting to investigate the mechanism by which Ezh2-mediated H3K27 methylation leads to cancer."	Dilution 1:100
Authors: Herrera-Merchan A,Arranz L,Ligos JM,de Molina A,Dominguez O,Gonzalez S	

For Research Use Only. Not for use in diagnostic procedures. Not for resale without express authorization. Products are warranted to operate or perform substantially in conformance with published Product specifications in effect at the time of sale, as set forth in the Production documentation, specifications and/or accompanying package inserts ("Documentation"). No claim of suitability for use in applications regulated by FDA is made. The warranty provided herein is valid only when used by properly trained individuals. Unless otherwise stated in the Documentation, this warranty is limited to one year from date of shipment when the Product is subjected to normal, proper and intended usage. This warranty does not extend to anyone other than the Buyer. Any model or sample furnished to Buyer is merely illustrative of the general type and quality of goods and does not represent that any Product will conform to such model or sample. NO OTHER WARRANTIES, EXPRESS OR IMPLIED, ARE GRANTED INCLUDING WITHOUT LIMITATION, IMPLIED WARRANTIES OF MERCHANTABILITY, FITNESS FOR ANY PARTICULAR PURPOSE, OR NON INFRINGEMENT. BUYER'S EXCLUSIVE REMEDY FOR NON-CONFORMING PRODUCTS DURING THE WARRANTY PERIOD IS LIMITED TO REPAIR, REPLACEMENT OF OR REFUND FOR THE NON-CONFORMING PRODUCT(S) AT SELLER'S SOLE OPTION. THERE IS NO OBLIGATION TO REPAIR, REPLACE OR REFUND FOR PRODUCTS AS THE RESULT OF (i) ACCIDENT, DISASTER OR EVENT OF FORCE MAJEURE, (ii) MISUSE, FAULT OR NEGLIGENCE OF OR BY BUYER, (iii) USE OF THE PRODUCTS IN A MANNER FOR WHICH THEY WERE NOT DESIGNED, OR (iv) IMPROPER STORAGE AND HANDLING OF THE PRODUCTS. Unless otherwise expressly stated on the Product or in the documentation accompanying the Product, the Product is intended for research only and is not to be used for any other purpose, including without limitation, unauthorized commercial uses, in vitro diagnostic uses, ex vivo or in vivo therapeutic uses, or any type of consumption by or application to human or animals.