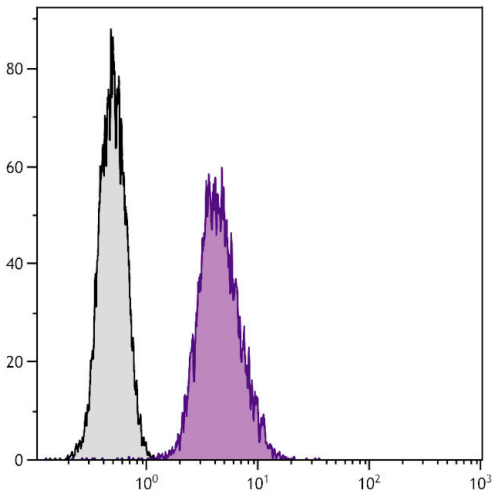


# LAMP2 Monoclonal Antibody (ABL-93), FITC

Product Details	
Size	500 µg
Species Reactivity	Mouse
Host/Isotype	Rat / IgG2a, kappa
Class	Monoclonal
Type	Antibody
Clone	ABL-93
Conjugate	FITC
Excitation/Emission Max	498/517 nm
Immunogen	Glycoproteins purified from BALB/c mouse embryo 3T3 cell line
Form	Liquid
Concentration	0.5 mg/mL
Purification	purified
Storage buffer	PBS
Contains	<0.1% sodium azide
Storage conditions	4° C, store in dark
RRID	AB_2556578

Applications	Tested Dilution	Publications
Immunocytochemistry (ICC/IF)	-	1 Publication
Flow Cytometry (Flow)	0.1-0.25 µg / 1x10^6 cells	-

## Product Images For LAMP2 Monoclonal Antibody (ABL-93), FITC



**LAMP2 Antibody (RMCD107B01) in Flow**  
Flow cytometry analysis of LAMP2 in Mouse M phi cells. Cells were stained using LAMP2 Monoclonal Antibody (ABL-93), FITC (Product # RMCD107B01).

Immunocytochemistry (1)

PloS one	Year 2019
<b>CRB3 and the FERM protein EPB41L4B regulate proliferation of mammary epithelial cells through the release of amphiregulin.</b>	
"Published figure using LAMP2 monoclonal antibody (Product # RMCD107B01) in Immunocytochemistry"	
Authors: Walker SJ,Selfors LM,Margolis BL,Brugge JS	

For Research Use Only. Not for use in diagnostic procedures. Not for resale without express authorization. Products are warranted to operate or perform substantially in conformance with published Product specifications in effect at the time of sale, as set forth in the Production documentation, specifications and/or accompanying package inserts ("Documentation"). No claim of suitability for use in applications regulated by FDA is made. The warranty provided herein is valid only when used by properly trained individuals. Unless otherwise stated in the Documentation, this warranty is limited to one year from date of shipment when the Product is subjected to normal, proper and intended usage. This warranty does not extend to anyone other than the Buyer. Any model or sample furnished to Buyer is merely illustrative of the general type and quality of goods and does not represent that any Product will conform to such model or sample. NO OTHER WARRANTIES, EXPRESS OR IMPLIED, ARE GRANTED INCLUDING WITHOUT LIMITATION, IMPLIED WARRANTIES OF MERCHANTABILITY, FITNESS FOR ANY PARTICULAR PURPOSE, OR NON INFRINGEMENT. BUYER'S EXCLUSIVE REMEDY FOR NON-CONFORMING PRODUCTS DURING THE WARRANTY PERIOD IS LIMITED TO REPAIR, REPLACEMENT OF OR REFUND FOR THE NON-CONFORMING PRODUCT(S) AT SELLER'S SOLE OPTION. THERE IS NO OBLIGATION TO REPAIR, REPLACE OR REFUND FOR PRODUCTS AS THE RESULT OF (I) ACCIDENT, DISASTER OR EVENT OF FORCE MAJEURE, (II) MISUSE, FAULT OR NEGLIGENCE OF OR BY BUYER, (III) USE OF THE PRODUCTS IN A MANNER FOR WHICH THEY WERE NOT DESIGNED, OR (IV) IMPROPER STORAGE AND HANDLING OF THE PRODUCTS. Unless otherwise expressly stated on the Product or in the documentation accompanying the Product, the Product is intended for research only and is not to be used for any other purpose, including without limitation, unauthorized commercial uses, in vitro diagnostic uses, ex vivo or in vivo therapeutic uses, or any type of consumption by or application to human or animals.