

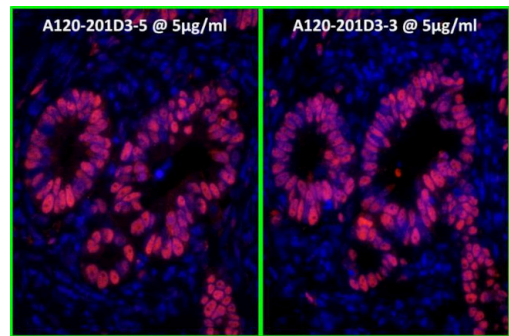
# Goat anti-Rabbit IgG (H+L) Cross-Adsorbed Secondary Antibody, DyLight™ 550

Product Details	
Size	500 µg
Species Reactivity	Rabbit
Host/Isotype	Goat / IgG
Class	Polyclonal
Type	Secondary Antibody
Conjugate	DyLight™ 550
Excitation/Emission Max	556/570 nm
Immunogen	Rabbit IgG-heavy and light chain
Form	Liquid
Concentration	0.5 mg/mL
Purification	Antigen affinity chromatography
Storage buffer	PBS, pH 6.8 to 7.4, with 0.2% BSA
Contains	0.09% sodium azide
Storage conditions	4° C
RRID	AB_2556613

Applications	Tested Dilution	Publications
Western Blot (WB)	1:5,000-1:20,000	0 Publication
Immunohistochemistry (Paraffin) (IHC (P))	1:50-1:500	0 Publication
Immunocytochemistry (ICC/IF)	1:50-1:500	-
Flow Cytometry (Flow)	1:50 - 1:200	-
Immunoprecipitation (IP)	Assay-dependent	-

## Product Specific Information

This antibody is cross-adsorbed and exhibits minimum reactivity to bovine, chicken, horse, human, mouse, pig and rat.

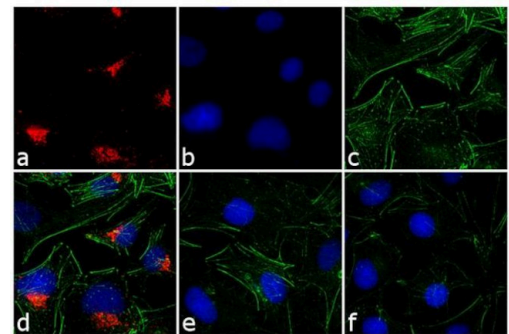


**Rabbit IgG (H+L) Cross-Adsorbed Secondary Antibody (SA5-10033) in IHC (P)**

Immunohistochemistry detection of human PCNA by immunofluorescence. Samples: FFPE serial sections of human stomach carcinoma. Primary Antibody: Affinity purified rabbit anti-PCNA (Product # IHC-00012) used at a dilution of 1:100. Secondary Antibody: Red-fluorescent goat anti-rabbit IgG-heavy and light chain, cross-adsorbed Antibody DyLight® 550 Conjugated (Product # SA5-10033) used at a dilution of 1:100 (5 µg/mL). Counterstain: DAPI (blue).

**Rabbit IgG (H+L) Cross-Adsorbed Secondary Antibody (SA5-10033) in ICC /IF**

Immunofluorescence analysis of Goat anti-Rabbit IgG (H+L) Cross Adsorbed Secondary Antibody, DyLight 550 conjugate was performed using Hep G2 cells stained with alpha-1 antitrypsin Rabbit Polyclonal Primary Antibody (Product # PA5-16661). The cells were fixed with 4% paraformaldehyde for 10 minutes, permeabilized with 0.1% Triton™ X-100 for 10 minutes, blocked with 1% BSA for 1 hour and labeled with Rabbit primary antibody (1:250 dilution) for 3 hours at room temperature. Goat anti-Rabbit IgG (H+L) Cross Adsorbed Secondary Antibody, DyLight 550 conjugate (Product # SA5-10033) was used at a concentration of 2µg/mL in phosphate buffered saline containing 0.2 % BSA for 45 minutes at room temperature, for detection of alpha-1 antitrypsin in the cytoplasm (Panel a: red). Nuclei (Panel b: blue) were stained with DAPI in SlowFade® Gold Antifade Mountant (Product # S36938). F-actin was stained with Alexa Fluor® 488 Phalloidin (Product # A12379, 1:300) (Panel c: green). Panel d represents the composite image. No nonspecific staining was observed with the secondary antibody alone (panel f), or with an isotype control (panel e). The images were captured at 60X magnification.



**8 References**

Liver sinusoidal endothelial cells show reduced scavenger function and downregulation of Fc gamma receptor IIb, yet maintain a preserved fenestration in the GImpgt/gt mouse model of slowly progressing liver fibrosis. PLoS One (2023)

Twist regulates Yorkie activity to guide lineage reprogramming of syncytial alary muscles. Cell Rep (2022)

Hemolymph Node - An Immunomorphological Organ: Modeling the Hemolymph Node by Allografting Renal Tissue in the Rat. Cells Tissues Organs (2021)

Bivalves are NO different: nitric oxide as negative regulator of metamorphosis in the Pacific oyster, Crassostrea gigas. BMC Dev Biol (2020)

Bivalves are NO different: nitric oxide as negative regulator of metamorphosis in the Pacific oyster, Crassostrea gigas. Research Square (2020)

For Research Use Only. Not for use in diagnostic procedures. Not for resale without express authorization. Products are warranted to operate or perform substantially in conformance with published Product specifications in effect at the time of sale, as set forth in the Production documentation, specifications and/or accompanying package inserts ("Documentation"). No claim of suitability for use in applications regulated by FDA is made. The warranty provided herein is valid only when used by properly trained individuals. Unless otherwise stated in the Documentation, this warranty is limited to one year from date of shipment when the Product is subjected to normal, proper and intended usage. This warranty does not extend to anyone other than the Buyer. Any model or sample furnished to Buyer is merely illustrative of the general type and quality of goods and does not represent that any Product will conform to such model or sample. NO OTHER WARRANTIES, EXPRESS OR IMPLIED, ARE GRANTED INCLUDING WITHOUT LIMITATION, IMPLIED WARRANTIES OF MERCHANTABILITY, FITNESS FOR ANY PARTICULAR PURPOSE, OR NON INFRINGEMENT. BUYER'S EXCLUSIVE REMEDY FOR NON-CONFORMING PRODUCTS DURING THE WARRANTY PERIOD IS LIMITED TO REPAIR, REPLACEMENT OF OR REFUND FOR THE NON-CONFORMING PRODUCT(S) AT SELLER'S SOLE OPTION. THERE IS NO OBLIGATION TO REPAIR, REPLACE OR REFUND FOR PRODUCTS AS THE RESULT OF (I) ACCIDENT, DISASTER OR EVENT OF FORCE MAJEURE, (II) MISUSE, FAULT OR NEGLIGENCE OF OR BY BUYER, (III) USE OF THE PRODUCTS IN A MANNER FOR WHICH THEY WERE NOT DESIGNED, OR (IV) IMPROPER STORAGE AND HANDLING OF THE PRODUCTS. Unless otherwise expressly stated on the Product or in the documentation accompanying the Product, the Product is intended for research only and is not to be used for any other purpose, including without limitation, unauthorized commercial uses, in vitro diagnostic uses, ex vivo or in vivo therapeutic uses, or any type of consumption by or application to human or animals.