

# GAPDH Polyclonal Antibody

Product Details	
Size	100 µg
Species Reactivity	Human
Published Species	Rat, Human, Mouse
Host/Isotype	Rabbit / IgG
Class	Polyclonal
Type	Antibody
Conjugate	Unconjugated
Immunogen	KLH conjugated peptide representing human GAPDH
Form	Liquid
Concentration	1 mg/mL
Purification	Antigen affinity chromatography
Storage buffer	BBS, pH 8.4
Contains	no preservative
Storage conditions	4° C, store in dark, DO NOT FREEZE!
RRID	AB_10709707

Applications	Tested Dilution	Publications
Western Blot (WB)	0.5 µg/mL	22 Publications

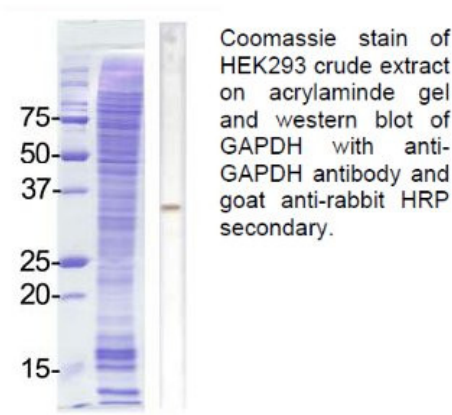
## Product Specific Information

TAB1001 detects GAPDH in samples.

TAB1001 has been successfully used in Western Blot applications.

The TAB1001 immunogen is a KLH conjugated peptide representing human GAPDH.

Product Images For GAPDH Polyclonal Antibody



**GAPDH Antibody (TAB1001) in WB**  
Western blot analysis of GAPDH using a polyclonal antibody (Product # TAB1001).

[View more figures on thermofisher.com](#)

22 References

Western Blot (22)

<p>Renal failure</p> <p><b>Implications of cell division cycle associated 4 on the Wilm's tumor cells viability via AKT/mTOR signaling pathway.</b></p> <p>"Published figure using GAPDH polyclonal antibody (Product # TAB1001) in Western Blot"</p> <p>Authors: Li S,Qin C,Chen Y,Wei D,Tan Z,Meng J</p>	<p>Year</p> <p>2021</p>
<p>Journal of the American Chemical Society</p> <p><b>A Helicase Unwinds Hexanucleotide Repeat RNA G-Quadruplexes and Facilitates Repeat-Associated Non-AUG Translation.</b></p> <p>"TAB1001 was used in Western Blotting to indicate that DHX36 facilitates C9orf72 RAN translation by resolving repeat RNA G-quadruplex structures and may be a potential target for therapeutic intervention."</p> <p>Authors: Liu H,Lu YN,Paul T,Periz G,Banco MT,Ferré-D'Amaré AR,Rothstein JD,Hayes LR,Myong S,Wang J</p>	<p>Year</p> <p>2021</p> <p>Species</p> <p>Human</p> <p>Dilution</p> <p>1:2000</p>

[View more WB references on thermofisher.com](#)

More applications with references on thermofisher.com

For Research Use Only. Not for use in diagnostic procedures. Not for resale without express authorization. Products are warranted to operate or perform substantially in conformance with published Product specifications in effect at the time of sale, as set forth in the Production documentation, specifications and/or accompanying package inserts ("Documentation"). No claim of suitability for use in applications regulated by FDA is made. The warranty provided herein is valid only when used by properly trained individuals. Unless otherwise stated in the Documentation, this warranty is limited to one year from date of shipment when the Product is subjected to normal, proper and intended usage. This warranty does not extend to anyone other than the Buyer. Any model or sample furnished to Buyer is merely illustrative of the general type and quality of goods and does not represent that any Product will conform to such model or sample. NO OTHER WARRANTIES, EXPRESS OR IMPLIED, ARE GRANTED INCLUDING WITHOUT LIMITATION, IMPLIED WARRANTIES OF MERCHANTABILITY, FITNESS FOR ANY PARTICULAR PURPOSE, OR NON INFRINGEMENT. BUYER'S EXCLUSIVE REMEDY FOR NON-CONFORMING PRODUCTS DURING THE WARRANTY PERIOD IS LIMITED TO REPAIR, REPLACEMENT OF OR REFUND FOR THE NON-CONFORMING PRODUCT(S) AT SELLER'S SOLE OPTION. THERE IS NO OBLIGATION TO REPAIR, REPLACE OR REFUND FOR PRODUCTS AS THE RESULT OF (i) ACCIDENT, DISASTER OR EVENT OF FORCE MAJEURE, (ii) MISUSE, FAULT OR NEGLIGENCE OF OR BY BUYER, (iii) USE OF THE PRODUCTS IN A MANNER FOR WHICH THEY WERE NOT DESIGNED, OR (iv) IMPROPER STORAGE AND HANDLING OF THE PRODUCTS. Unless otherwise expressly stated on the Product or in the documentation accompanying the Product, the Product is intended for research only and is not to be used for any other purpose, including without limitation, unauthorized commercial uses, in vitro diagnostic uses, ex vivo or in vivo therapeutic uses, or any type of consumption by or application to human or animals.