

# Mouse IL-15/IL-15R Complex Recombinant Protein, eBioscience™

Product Details	
Size	25 µg
Species	Mouse
Expression System	Insect
Amino acid sequence	N-terminal his-tagged mIL-15Ra, amino acids Gly33-Ala132 (Accession # NP_032384)-GS linker-mIL-15, amino acids Asn49-Ser162 (Accession # NP_032383)
Tag	His-tag
Molecular weight	29.4 kDa
Class	Recombinant
Type	Protein
Purity	>90% by SDS-PAGE
Endotoxin concentration	<0.1 ng/µg
Activity	ED50 < 4 ng/mL; determined by dose-dependent proliferation of CTLL-2 cells.
Conjugate	Unconjugated
Form	Liquid
Concentration	0.1 mg/mL
Purification	Affinity chromatography
Storage buffer	TBS, pH 8.0, with 1% BSA
Contains	no preservative
Storage conditions	-80°C

Applications	Tested Dilution	Publications
Functional Assay (FN)	Assay-Dependent	-
Control (Ctrl)	Assay-Dependent	-
Miscellaneous PubMed (Misc)	-	5 Publications

## Product Specific Information

Description: This recombinant protein is the heterocomplex of the mouse IL-15 linked to soluble IL-15 receptor alpha chain (sushi domain) via a GS linker.

Interleukin 15 (IL-15) is a cytokine that stimulates T and NK cell proliferation and differentiation. IL-15 regulates macrophage proinflammatory and chemotactic protein production. In addition, it induces differentiation of monocytes towards dendritic cells. The receptor for IL-15 is a high affinity heterotrimeric receptor composed of IL-15Ralpha and 2 additional subunits of the IL-2 receptor (beta and gamma). Upon activation, the receptor complex signals via the Stat and JAK pathways.

It has been reported that the soluble form of IL-15Ralpha corresponding to the entire extracellular domain, cleaved by MMP's, behaves as a high affinity IL-15 antagonist, whereas the recombinant extracellular domain comprised of the sushi domain together with the ligand, IL-15, behaves as a potent agonist by enhancing binding of IL-15 to the receptor complex. In fact, this receptor-ligand complex has approximately 10-100 fold increased proliferative activity.

Applications Reported: Recombinant mouse IL-15/IL-15RA complex is biologically active.

Applications Tested: The ED50 of this protein, as measured by CTLL-2 cell proliferation assay, is less than or equal to 4 ng/mL. This corresponds to a specific activity of greater than or equal to 2.5 x 10<sup>5</sup> Units/mg.

Source: Insect cell expressed N-terminal His-Tagged mIL-15Ra Gly33-Ala132 accession # NP\_032384-GS linker-mIL-15 Asn49-Ser162 accession # NP\_032383.

Bioactivity: The ED50 of this protein, as measured by CTLL-2 cell proliferation assay, is less than or equal to 4 ng/mL. This corresponds to a specific activity of greater than or equal to 2.5 x 10<sup>5</sup> Units/mg.

Endotoxin: Less than 0.1 ng/ug cytokine as determined by the LAL assay. Purity: >98% as determined by SDS-PAGE.

Molecular Weight: 29.4 kDa.

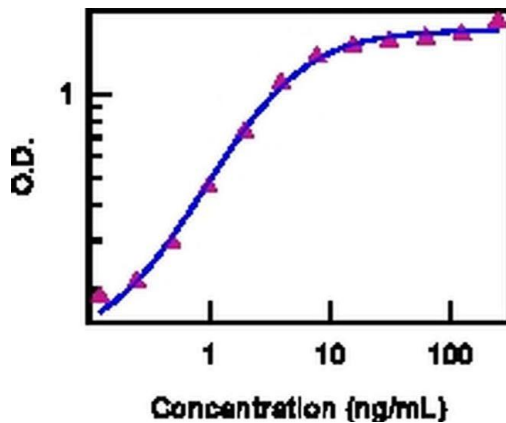
Storage and handling: For best recovery, quick-spin vial prior to opening. Use in a sterile environment.

Purity: Greater than 90%, as determined by SDS-PAGE.

Aggregation: Less than 10%, as determined by HPLC.

Filtration: 0.2 µm post-manufacturing filtered.

### Product Images For Mouse IL-15/IL-15R Complex Recombinant Protein, eBioscience™



**Mouse IL-15/IL-15R Complex Protein (14-8152-80) in FN**  
Proliferation of CTLL-2 cells in response to Mouse IL-15/IL-15R Complex Recombinant Protein.

## 5 References

### Miscellaneous PubMed (5)

#### Immunity

#### Group 1 Innate Lymphoid Cell Lineage Identity Is Determined by a cis-Regulatory Element Marked by a Long Non-coding RNA.

Authors: Mowel WK, McCright SJ, Kotzin JJ, Collet MA, Uyar A, Chen X, DeLaney A, Spencer SP, Virtue AT, Yang E, Villarino A, Kurachi M, Dunagin MC, Pritchard GH, Stein J, Hughes C, Fonseca-Pereira D, Veiga-Fernandes H, Raj A, Kambayashi T, Brodsky IE, O'Shea JJ, Wherry EJ, Goff LA, Rinn JL, Williams A, Flavell RA, Henao-Mejia J

**Species**  
Not Applicable

**Dilution**  
Not Cited

**Year**  
2017

#### Autophagy

#### Common -chain cytokine signaling is required for macroautophagy induction during CD4+ T-cell activation.

Authors: Botbol Y, Patel B, Macian F

**Species**  
Not Applicable

**Dilution**  
Not Cited

**Year**  
2016

[View more Misc references on thermofisher.com](#)

### More applications with references on thermofisher.com

For Research Use Only. Not for use in diagnostic procedures. Not for resale without express authorization. Products are warranted to operate or perform substantially in conformance with published Product specifications in effect at the time of sale, as set forth in the Production documentation, specifications and/or accompanying package inserts ("Documentation"). No claim of suitability for use in applications regulated by FDA is made. The warranty provided herein is valid only when used by properly trained individuals. Unless otherwise stated in the Documentation, this warranty is limited to one year from date of shipment when the Product is subjected to normal, proper and intended usage. This warranty does not extend to anyone other than the Buyer. Any model or sample furnished to Buyer is merely illustrative of the general type and quality of goods and does not represent that any Product will conform to such model or sample. NO OTHER WARRANTIES, EXPRESS OR IMPLIED, ARE GRANTED INCLUDING WITHOUT LIMITATION, IMPLIED WARRANTIES OF MERCHANTABILITY, FITNESS FOR ANY PARTICULAR PURPOSE, OR NON INFRINGEMENT. BUYER'S EXCLUSIVE REMEDY FOR NON-CONFORMING PRODUCTS DURING THE WARRANTY PERIOD IS LIMITED TO REPAIR, REPLACEMENT OF OR REFUND FOR THE NON-CONFORMING PRODUCT(S) AT SELLER'S SOLE OPTION. THERE IS NO OBLIGATION TO REPAIR, REPLACE OR REFUND FOR PRODUCTS AS THE RESULT OF (I) ACCIDENT, DISASTER OR EVENT OF FORCE MAJEURE, (II) MISUSE, FAULT OR NEGLIGENCE OF OR BY BUYER, (III) USE OF THE PRODUCTS IN A MANNER FOR WHICH THEY WERE NOT DESIGNED, OR (IV) IMPROPER STORAGE AND HANDLING OF THE PRODUCTS. Unless otherwise expressly stated on the Product or in the documentation accompanying the Product, the Product is intended for research only and is not to be used for any other purpose, including without limitation, unauthorized commercial uses, in vitro diagnostic uses, ex vivo or in vivo therapeutic uses, or any type of consumption by or application to human or animals.