

Rabbit anti-Mouse IgG F(ab')₂ Secondary Antibody, AP

Product Details	
Size	1 mL
Species Reactivity	Mouse
Host/Isotype	Rabbit / IgG
Class	Polyclonal
Type	Secondary Antibody
Conjugate	AP
Form	Lyophilized
Concentration	0.8 mg/mL
Purification	Affinity chromatography
Storage buffer	TBS, pH 8, with 15mg/mL BSA
Contains	0.05% sodium azide
Storage conditions	4° C
RRID	AB_228430

Applications	Tested Dilution	Publications
Western Blot (WB)	1:5,000-1:50,000	-
Miscellaneous PubMed (Misc)	-	2 Publications

Product Specific Information

Concentration may vary slightly from lot-to-lot, see lot-specific datasheet for exact concentration.

This antibody has been successfully used in Western blot and IP applications.

Antibody Specificity: This antibody reacts with the light chains on mouse IgG and with those common to most mouse immunoglobulins, based on electrophoresis. The antibody does not react with the Fc portion of mouse IgG. No antibody was detected against non-immunoglobulin serum proteins. However, antibodies may cross-react with immunoglobulins from other species.

Restoration and Storage: Store product at 4°C until opened. Restore with 1.0 mL distilled water (0.8 mg/mL after restoration). Centrifuge product if it is not completely clear after standing for 1-2 hours at room temperature. To judge clarity, draw product into a pasteur pipette. Product is stable for several weeks at 4°C as an undiluted liquid. After dilution, do not use for more than one day.

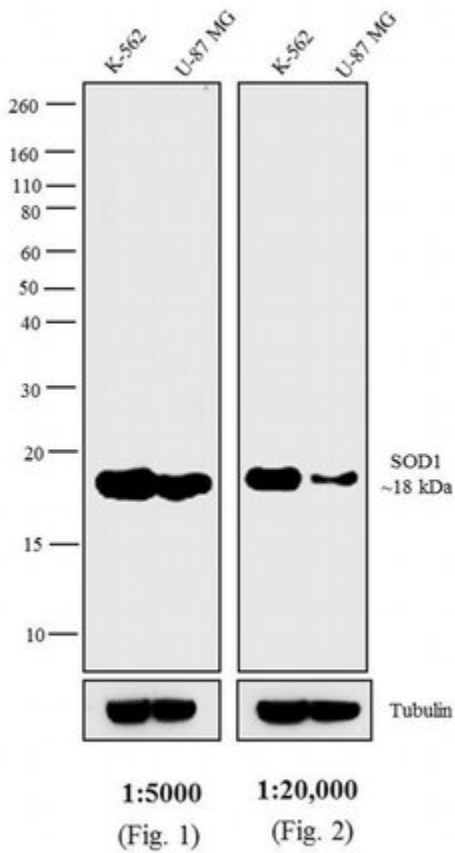
To extend the shelf-life of this product, add an equal volume of glycerol to make a final concentration of approximately 50% glycerol and store at -20°C.

Country of Origin: USA

Product Images For Rabbit anti-Mouse IgG F(ab')₂ Secondary Antibody, AP

Mouse IgG F(ab')₂ Secondary Antibody (31331) in WB

Western blot analysis was performed on whole cell extracts (30 µg lysate) of K-562 (Lane 1) and Jurkat (Lane 2). The blots were probed with Anti-SOD2 Mouse Monoclonal Antibody (Product # MA1-106, 2 µg/mL) and detected by chemiluminescence of alkaline phosphatase (AP) using Rabbit anti-Mouse IgG F(ab')₂ Secondary Antibody, AP conjugate (Product # 31331) at dilutions 1:5,000 (Fig. 1) and 1:20,000 (Fig. 2). A 22 kDa band corresponding to SOD2 was observed. Known quantity of protein samples were electrophoresed using Novex® NuPAGE®12 % Bis-Tris gel (Product # NP0342BOX), XCell SureLock™ Electrophoresis System (Product # EI0002) and Novex® Sharp Pre-Stained Protein Standard (Product # LC5800). Resolved proteins were then transferred onto a nitrocellulose membrane with iBlot® 2 Dry Blotting System (Product # IB21001). The membrane was probed with the relevant primary and secondary antibody after blocking with 5 % skimmed milk. Chemiluminescent detection of alkaline phosphatase (AP) was performed using Novex® AP Chemiluminescent Substrate (CDP-Star®) (Product # WP20002) with Novex® AP Chemiluminescent Substrate Enhancer (Nitro Block II™) (Product # WP20003).



Miscellaneous PubMed (2)

BMC rheumatology

Characterization of the interleukin-17 effect on articular cartilage in a translational model: an explorative study.

"31331 was used in Western Blotting to characterize an IL-17-mediated articular cartilage degradation ex-vivo model and to investigate IL-17 effect on cartilage extracellular matrix protein turnover."

Authors: Sinkeviciute D, Aspberg A, He Y, Bay-Jensen AC, Önerfjord P

Species
Not Applicable

Dilution
Not Cited

Year
2020

Cells

LXR Regulates ChREBP Transactivity in a Target Gene-Specific Manner through an Agonist-Modulated LBD-LID Interaction.

"31331 was used in Sample Preparation to study liver X receptor (LXR) and carbohydrate responsive element-binding protein (ChREBP) co-occupancy."

Authors: Fan Q, Nørgaard RC, Grytten I, Ness CM, Lucas C, Vekterud K, Soedling H, Matthews J, Lemma RB, Gabrielsen OS, Bindesbøll C, Ulven SM, Nebb HI, Grønning-Wang LM, Sæther T

Species
Not Applicable

Dilution
Not Cited

Year
2020

For Research Use Only. Not for use in diagnostic procedures. Not for resale without express authorization. Products are warranted to operate or perform substantially in conformance with published Product specifications in effect at the time of sale, as set forth in the Production documentation, specifications and/or accompanying package inserts ("Documentation"). No claim of suitability for use in applications regulated by FDA is made. The warranty provided herein is valid only when used by properly trained individuals. Unless otherwise stated in the Documentation, this warranty is limited to one year from date of shipment when the Product is subjected to normal, proper and intended usage. This warranty does not extend to anyone other than the Buyer. Any model or sample furnished to Buyer is merely illustrative of the general type and quality of goods and does not represent that any Product will conform to such model or sample. NO OTHER WARRANTIES, EXPRESS OR IMPLIED, ARE GRANTED INCLUDING WITHOUT LIMITATION, IMPLIED WARRANTIES OF MERCHANTABILITY, FITNESS FOR ANY PARTICULAR PURPOSE, OR NON INFRINGEMENT. BUYER'S EXCLUSIVE REMEDY FOR NON-CONFORMING PRODUCTS DURING THE WARRANTY PERIOD IS LIMITED TO REPAIR, REPLACEMENT OF OR REFUND FOR THE NON-CONFORMING PRODUCT(S) AT SELLER'S SOLE OPTION. THERE IS NO OBLIGATION TO REPAIR, REPLACE OR REFUND FOR PRODUCTS AS THE RESULT OF (I) ACCIDENT, DISASTER OR EVENT OF FORCE MAJEURE, (II) MISUSE, FAULT OR NEGLIGENCE OF OR BY BUYER, (III) USE OF THE PRODUCTS IN A MANNER FOR WHICH THEY WERE NOT DESIGNED, OR (IV) IMPROPER STORAGE AND HANDLING OF THE PRODUCTS. Unless otherwise expressly stated on the Product or in the documentation accompanying the Product, the Product is intended for research only and is not to be used for any other purpose, including without limitation, unauthorized commercial uses, in vitro diagnostic uses, ex vivo or in vivo therapeutic uses, or any type of consumption by or application to human or animals.