

Goat anti-Rabbit IgG (H+L) Cross-Adsorbed Secondary Antibody, HRP

Product Details	
Size	1.5 mL
Species Reactivity	Rabbit
Host/Isotype	Goat / IgG
Class	Polyclonal
Type	Secondary Antibody
Conjugate	HRP
Form	Lyophilized
Concentration	0.8 mg/mL
Purification	Affinity chromatography
Storage buffer	PBS, pH 7.6, with 15mg/mL BSA
Contains	no preservative
Storage conditions	4° C
RRID	AB_228338

Applications	Tested Dilution	Publications
Western Blot (WB)	1:10,000-1:200,000	0 Publication
Immunohistochemistry (IHC)	1:500-1:5,000	0 Publication
Immunocytochemistry (ICC/IF)	1:500-1:5,000	-
Miscellaneous PubMed (Misc)	-	0 Publication

Product Specific Information

Concentration may vary slightly from lot-to-lot, see lot-specific datasheet for exact concentration.

This antibody has been successfully used in Western blot, and ICC applications.

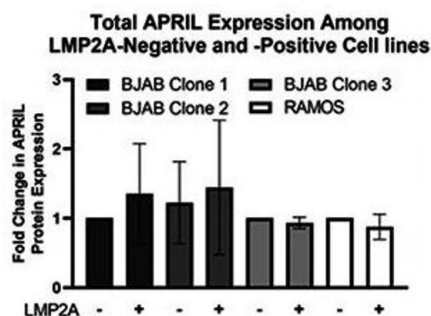
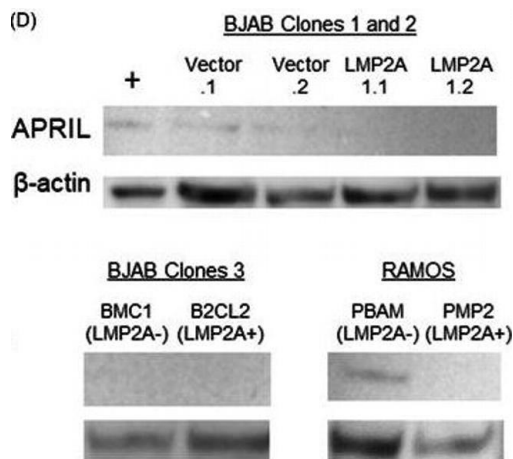
Antibody Specificity: This antibody reacts with the heavy chains of rabbit IgG and with the light chains common to most rabbit immunoglobulins. No antibody was detected against non-immunoglobulin serum proteins. The product has been tested by ELISA and/or solid-phase adsorbed to ensure minimal cross-reaction with human serum proteins. However, this antibody may cross-react with immunoglobulins from other species. This antibody may cross-react with SuperBlock® Blocking Buffers.

Restoration and Storage: Store product at 4°C until opened. Restore with 1.5 mL distilled water (0.8 mg/mL after restoration). Centrifuge product if it is not completely clear after standing for 1-2 hours at room temperature. To judge clarity, draw product into a pasteur pipette. Product may be stored for several weeks at 4°C as undiluted liquid. After dilution, do not use for more than one day.

To extend the shelf-life of this product, add an equal volume of glycerol to make a final concentration of approximately 50% glycerol and store at -20°C.

Country of Origin: USA

Product Images For Goat anti-Rabbit IgG (H+L) Cross-Adsorbed Secondary Antibody, HRP

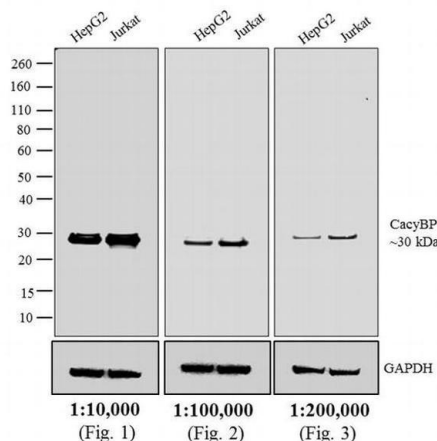


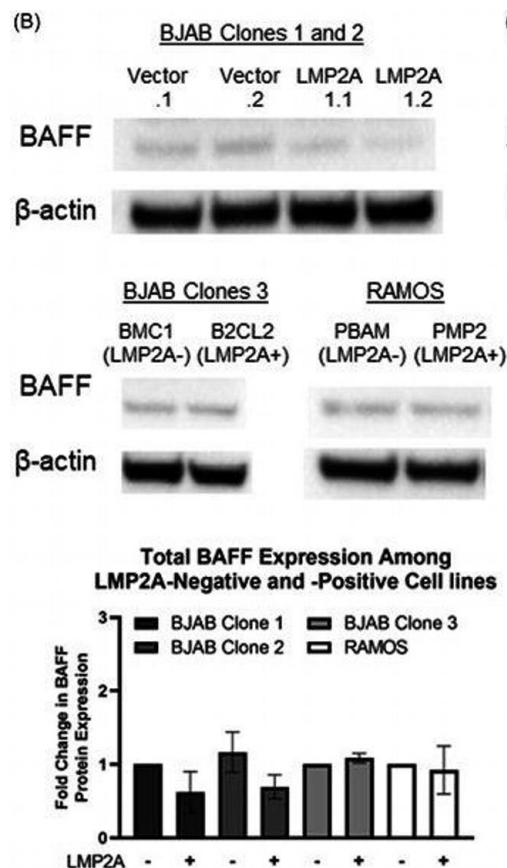
Rabbit IgG (H+L) Cross-Adsorbed Secondary Antibody (31462) in WB

LMP2A does not affect the production BAFF or APRIL levels in B cell lymphoma cells. LMP2A-negative (BJAB Vector.1, BJAB Vector.2, BJAB BCM1, RAMOS-PBAM) and LMP2A-positive (BJAB LMP2A1.1, BJAB LMP2A1.2, BJAB B2CL2, RAMOS-PMP2) B cell lines were incubated for 48 h before supernatants were isolated and analyzed by ELISA for soluble BAFF (A) or APRIL (C) protein lysates were isolated from LMP2A-negative and -positive B cell lines and Western Blot was used to determine total BAFF (B) or APRIL (D) Experiments are either a combination of three experiments for (A, C) or representative of two experiments for (B, D) and a bar graph demonstrating the results of combining the representative Western blots. All data was analyzed statistically as described in the Section 2 and was found to not reach a $p < .05$. BAFF, B cell Activating Factor of the tumor necrosis factor family; LMP2A, Latent Membrane Protein 2A. Image collected and cropped by CiteAb from the following publication (<https://pubmed.ncbi.nlm.nih.gov/36301035>), licensed under a CC BY license.

Rabbit IgG (H+L) Cross-Adsorbed Secondary Antibody (31462) in WB

Western blot analysis was performed on whole cell extracts (30 µg lysate) of Hep G2 (Lane 1) and Jurkat (Lane 2). The blots were probed with Anti-CacyBP Rabbit Polyclonal Antibody (Product # 720326, 1 µg/mL) and detected by chemiluminescence using Goat anti-Rabbit IgG (H+L) Cross-Adsorbed Secondary Antibody, HRP (Product # 31462) at dilutions 1:10,000 (Fig. 1), 1:100,000 (Fig. 2) and 1:200,000 (Fig. 3). A 30 kDa band corresponding to CacyBP was observed. Known quantity of protein samples were electrophoresed using Novex® NuPAGE®12 % Bis-Tris gel (Product # NP0342BOX), XCell SureLock™ Electrophoresis System (Product # EI0002) and Novex® Sharp Pre-Stained Protein Standard (Product # LC5800). Resolved proteins were then transferred onto a nitrocellulose membrane with iBlot® 2 Dry Blotting System (Product # IB21001). The membrane was probed with the relevant primary and secondary antibody after blocking with 5 % skimmed milk. Chemiluminescent detection was performed using Pierce™ ECL Western Blotting Substrate (Product # 32106).





Rabbit IgG (H+L) Cross-Adsorbed Secondary Antibody (31462) in WB

LMP2A does not affect the production BAFF or APRIL levels in B cell lymphoma cells. LMP2A-negative (BJAB Vector.1, BJAB Vector.2, BJAB BCM1, RAMOS-PBAM) and LMP2A-positive (BJAB LMP2A1.1, BJAB LMP2A1.2, BJAB B2CL2, RAMOS-PMP2) B cell lines were incubated for 48 h before supernatants were isolated and analyzed by ELISA for soluble BAFF (A) or APRIL (C) protein lysates were isolated from LMP2A-negative and -positive B cell lines and Western Blot was used to determine total BAFF (B) or APRIL (D) Experiments are either a combination of three experiments for (A, C) or representative of two experiments for (B, D) and a bar graph demonstrating the results of combining the representative Western blots. All data was analyzed statistically as described in the Section 2 and was found to not reach a $p < .05$. BAFF, B cell Activating Factor of the tumor necrosis factor family; LMP2A, Latent Membrane Protein 2A. Image collected and cropped by CiteAb from the following publication (<https://pubmed.ncbi.nlm.nih.gov/36301035>), licensed under a CC BY license.

View more figures on thermofisher.com

181 References

Monitoring APOBEC3A protein levels in human cancer cells. *Methods Cell Biol* (2024)

Immunogenicity and Tolerability of a SARS-CoV-2 TNX-1800, a Live Recombinant Poxvirus Vaccine Candidate, in Syrian Hamsters and New Zealand White Rabbits. *Viruses* (2023)

A Combinatorial Regulatory Platform Determines Expression of RNA Polymerase III Subunit RPC7 (POLR3G) in Cancer. *Cancers (Basel)* (2023)

Astrocytic A2A receptors silencing negatively impacts hippocampal synaptic plasticity and memory of adult mice. *Glia* (2023)

TRAF7 is an essential regulator of blood vessel integrity during mouse embryonic and neonatal development. *iScience* (2023)

For Research Use Only. Not for use in diagnostic procedures. Not for resale without express authorization. Products are warranted to operate or perform substantially in conformance with published Product specifications in effect at the time of sale, as set forth in the Production documentation, specifications and/or accompanying package inserts ("Documentation"). No claim of suitability for use in applications regulated by FDA is made. The warranty provided herein is valid only when used by properly trained individuals. Unless otherwise stated in the Documentation, this warranty is limited to one year from date of shipment when the Product is subjected to normal, proper and intended usage. This warranty does not extend to anyone other than the Buyer. Any model or sample furnished to Buyer is merely illustrative of the general type and quality of goods and does not represent that any Product will conform to such model or sample. NO OTHER WARRANTIES, EXPRESS OR IMPLIED, ARE GRANTED INCLUDING WITHOUT LIMITATION, IMPLIED WARRANTIES OF MERCHANTABILITY, FITNESS FOR ANY PARTICULAR PURPOSE, OR NON-INFRINGEMENT. BUYER'S EXCLUSIVE REMEDY FOR NON-CONFORMING PRODUCTS DURING THE WARRANTY PERIOD IS LIMITED TO REPAIR, REPLACEMENT OF OR REFUND FOR THE NON-CONFORMING PRODUCT(S) AT SELLER'S SOLE OPTION. THERE IS NO OBLIGATION TO REPAIR, REPLACE OR REFUND FOR PRODUCTS AS THE RESULT OF (i) ACCIDENT, DISASTER OR EVENT OF FORCE MAJEURE, (ii) MISUSE, FAULT OR NEGLIGENCE OF OR BY BUYER, (iii) USE OF THE PRODUCTS IN A MANNER FOR WHICH THEY WERE NOT DESIGNED, OR (iv) IMPROPER STORAGE AND HANDLING OF THE PRODUCTS. Unless otherwise expressly stated on the Product or in the documentation accompanying the Product, the Product is intended for research only and is not to be used for any other purpose, including without limitation, unauthorized commercial uses, in vitro diagnostic uses, ex vivo or in vivo therapeutic uses, or any type of consumption by or application to human or animals.