

Goat anti-Rabbit IgG (H+L) Secondary Antibody, Biotin

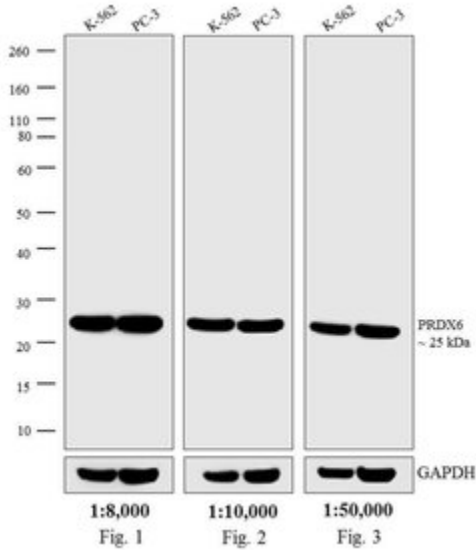
Product Details	
Size	2 mL
Species Reactivity	Rabbit
Host/Isotope	Goat / IgG
Class	Polyclonal
Type	Secondary Antibody
Conjugate	Biotin
Immunogen	Gamma Immunoglobulin
Form	Liquid
Concentration	0.6 mg/mL
Purification	Affinity chromatography
Storage buffer	PBS, pH 7.4, with 1% BSA, 40% glycerol
Contains	0.1% sodium azide
Storage Conditions	4° C
RRID	AB_2533969

Applications	Tested Dilution	Publications
ELISA (ELISA)	1:8,000-1:10,000	-
Immunofluorescence (IF)	1:8,000-1:10,000	-
Immunohistochemistry (Paraffin) (IHC (P))	1:8,000-1:10,000	2 Publications
Immunoprecipitation (IP)	1:8,000-1:10,000	-
Western Blot (WB)	1:5,000-1:50,000	3 Publications

Product Images For Goat anti-Rabbit IgG (H+L) Secondary Antibody, Biotin

Rabbit IgG (H+L) Secondary Antibody (65-6140) in WB

Western blot analysis was performed on membrane enriched extracts (30 µg lysate) of K-562 (Lane 1) and PC-3 (Lane 2). The blots were probed with Anti-PRDX6 Recombinant Rabbit Monoclonal Antibody (Product # 702211, 2 µg/mL) and detected by chemiluminescence using Goat anti-Rabbit IgG (H+L) Secondary Antibody, Biotin Conjugate (Product # 65-6140) at dilutions 1:8,000 (Fig. 1), 1:10,000 (Fig.2) and 1:50,000 (Fig. 3). A 25 kDa band corresponding to PRDX6 was observed. Known quantity of protein samples were electrophoresed using Novex® NuPAGE® 4-12 % Bis-Tris gel (Product # NP0321BOX), XCell SureLock™ Electrophoresis System (Product # EI0002) and Novex® Sharp Pre-Stained Protein Standard (Product # LC5800). Resolved proteins were then transferred onto a nitrocellulose membrane with iBlot® 2 Dry Blotting System (Product # IB21001). The membrane was probed with the relevant primary and secondary antibody after blocking with 5 % skimmed milk. This is followed by incubating the membrane with Poly-HRP Streptavidin (Product # N200, 1:10,000). Chemiluminescent detection was performed using Pierce™ ECL Western blotting Substrate (Product # 32106).



Western Blot (3)

The Journal of nutritional biochemistry

Dietary calcium supplementation in adult rats reverts brown adipose tissue dysfunction programmed by postnatal early overfeeding.

"656140 was used in western blot to report the effects of dietary calcium supplementation on brown adipose tissue, autonomic nerve activity, sympathoadrenal function, and cardiovascular parameters in adult obese rats that were raised in small litters"

Authors: Conceição EPS,Moura EG,Oliveira E,Guarda DS,Figueiredo MS,Quitete FT,Calvino C,Miranda RA,Mathias PCF,Manhães AC,Lisboa PC

Species
Not Applicable

Dilution
Not Cited

Year
2017

The Journal of endocrinology

Calcium reduces vitamin D and glucocorticoid receptors in the visceral fat of obese male rats.

"656140 was used in western blot to use rats to examine the effects of calcium, vitamin D, and glucocorticoids on obesity"

Authors: Conceição EP,Moura EG,Manhães AC,Carvalho JC,Nobre JL,Oliveira E,Lisboa PC

Species
Not Applicable

Dilution
1:5000

Year
2016

[View more WB references on thermofisher.com](#)

Immunohistochemistry (Paraffin) (2)

World journal of nephrology

Constitutive renal Rel/nuclear factor-B expression in Lewis polycystic kidney disease rats.

"656140 was used in immunohistochemistry - paraffin section to examine the expression and localization of Rel/nuclear factor-KB proteins in renal tissue from polycystic kidney disease samples"

Authors: Ta MH,Schwensen KG,Liuwantara D,Huso DL,Watnick T,Rangan GK

Species
Not Applicable

Dilution
1:200

Year
2016

Journal of dairy science

Effect of a biological response modifier on expression of growth factors and cellular proliferation at drying off.

"65-6140 was used in immunohistochemistry - paraffin section to observe the effects of a single intramammary infusion of a lipopolysaccharide-based biological response modifier in Staphylococcus aureus-infected bovine mammary glands during involution"

Authors: Dallard BE,Ruffino V,Heffel S,Calvinho LF

Species
Not Applicable

Dilution
1:300

Year
2007

More applications with references on thermofisher.com

For Research Use Only. Not for use in diagnostic procedures. Not for resale without express authorization. Products are warranted to operate or perform substantially in conformance with published Product specifications in effect at the time of sale, as set forth in the Production documentation, specifications and/or accompanying package inserts ("Documentation"). No claim of suitability for use in applications regulated by FDA is made. The warranty provided herein is valid only when used by properly trained individuals. Unless otherwise stated in the Documentation, this warranty is limited to one year from date of shipment when the Product is subjected to normal, proper and intended usage. This warranty does not extend to anyone other than the Buyer. Any model or sample furnished to Buyer is merely illustrative of the general type and quality of goods and does not represent that any Product will conform to such model or sample. NO OTHER WARRANTIES, EXPRESS OR IMPLIED, ARE GRANTED INCLUDING WITHOUT LIMITATION, IMPLIED WARRANTIES OF MERCHANTABILITY, FITNESS FOR ANY PARTICULAR PURPOSE, OR NON INFRINGEMENT. BUYER'S EXCLUSIVE REMEDY FOR NON-CONFORMING PRODUCTS DURING THE WARRANTY PERIOD IS LIMITED TO REPAIR, REPLACEMENT OF OR REFUND FOR THE NON-CONFORMING PRODUCT(S) AT SELLER'S SOLE OPTION. THERE IS NO OBLIGATION TO REPAIR, REPLACE OR REFUND FOR PRODUCTS AS THE RESULT OF (I) ACCIDENT, DISASTER OR EVENT OF FORCE MAJEURE, (II) MISUSE, FAULT OR NEGLIGENCE OF OR BY BUYER, (III) USE OF THE PRODUCTS IN A MANNER FOR WHICH THEY WERE NOT DESIGNED, OR (IV) IMPROPER STORAGE AND HANDLING OF THE PRODUCTS. Unless otherwise expressly stated on the Product or in the documentation accompanying the Product, the Product is intended for research only and is not to be used for any other purpose, including without limitation, unauthorized commercial uses, in vitro diagnostic uses, ex vivo or in vivo therapeutic uses, or any type of consumption by or application to human or animals.