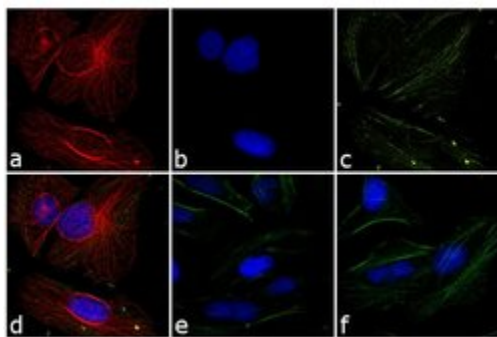


Chicken anti-Rabbit IgG (H+L) Cross-Adsorbed Secondary Antibody, TRITC

Product Details	
Size	500 µg
Species Reactivity	Rabbit
Host/Isotype	Chicken / IgY
Class	Polyclonal
Type	Secondary Antibody
Conjugate	TRITC
Immunogen	Gamma Immunoglobins Heavy and Light chains
Form	Lyophilized
Purification	Affinity chromatography
Storage buffer	PBS, pH 7.2, with 1% BSA
Contains	0.05% sodium azide
Storage Conditions	Store at 4°C short term. For long term storage, store at -20°C, avoiding freeze/thaw cycles. Store in the dark.
RRID	AB_2534672

Applications	Tested Dilution	Publications
Immunocytochemistry (ICC)	4 µg/mL	-
Immunofluorescence (IF)	4 µg/mL	-

Product Images For Chicken anti-Rabbit IgG (H+L) Cross-Adsorbed Secondary Antibody, TRITC



Rabbit IgG (H+L) Cross-Adsorbed Secondary Antibody (A15998) in IF
 Immunofluorescence analysis of Chicken anti-Rabbit IgG (H+L) Secondary Antibody, TRITC was performed using HeLa cells stained with alpha Tubulin Rabbit Polyclonal Primary Antibody (Product # PA5-16891). The cells were fixed with 4% paraformaldehyde for 10 minutes, permeabilized with 0.1% Triton™ X-100 for 10 minutes, blocked with 1% BSA for 1 hour and labeled with 2 µg/mL rabbit primary antibody for 3 hours at room temperature. Chicken anti-Rabbit IgG (H+L) Secondary Antibody, TRITC (Product # A15998) was used at a concentration of 4 µg/mL in phosphate buffered saline containing 0.2 % BSA for 45 minutes at room temperature, for detection of alpha Tubulin in the cytoplasm (Panel a: red). Nuclei (Panel b: blue) were stained with DAPI in SlowFade® Gold Antifade Mountant (Product # S36938). F-actin was stained with Alexa Fluor® 488 Phalloidin (Product # A12379, 1:300) (Panel c: green). Panel d represents the composite image. No nonspecific staining was observed with the secondary antibody alone (panel f), or with an isotype control (panel e). The images were captured at 60X magnification.

For Research Use Only. Not for use in diagnostic procedures. Not for resale without express authorization. Products are warranted to operate or perform substantially in conformance with published Product specifications in effect at the time of sale, as set forth in the Production documentation, specifications and/or accompanying package inserts ("Documentation"). No claim of suitability for use in applications regulated by FDA is made. The warranty provided herein is valid only when used by properly trained individuals. Unless otherwise stated in the Documentation, this warranty is limited to one year from date of shipment when the Product is subjected to normal, proper and intended usage. This warranty does not extend to anyone other than the Buyer. Any model or sample furnished to Buyer is merely illustrative of the general type and quality of goods and does not represent that any Product will conform to such model or sample. NO OTHER WARRANTIES, EXPRESS OR IMPLIED, ARE GRANTED INCLUDING WITHOUT LIMITATION, IMPLIED WARRANTIES OF MERCHANTABILITY, FITNESS FOR ANY PARTICULAR PURPOSE, OR NON INFRINGEMENT. BUYER'S EXCLUSIVE REMEDY FOR NON-CONFORMING PRODUCTS DURING THE WARRANTY PERIOD IS LIMITED TO REPAIR, REPLACEMENT OF OR REFUND FOR THE NON-CONFORMING PRODUCT(S) AT SELLER'S SOLE OPTION. THERE IS NO OBLIGATION TO REPAIR, REPLACE OR REFUND FOR PRODUCTS AS THE RESULT OF (I) ACCIDENT, DISASTER OR EVENT OF FORCE MAJEURE, (II) MISUSE, FAULT OR NEGLIGENCE OF OR BY BUYER, (III) USE OF THE PRODUCTS IN A MANNER FOR WHICH THEY WERE NOT DESIGNED, OR (IV) IMPROPER STORAGE AND HANDLING OF THE PRODUCTS. Unless otherwise expressly stated on the Product or in the documentation accompanying the Product, the Product is intended for research only and is not to be used for any other purpose, including without limitation, unauthorized commercial uses, in vitro diagnostic uses, ex vivo or in vivo therapeutic uses, or any type of consumption by or application to human or animals.