

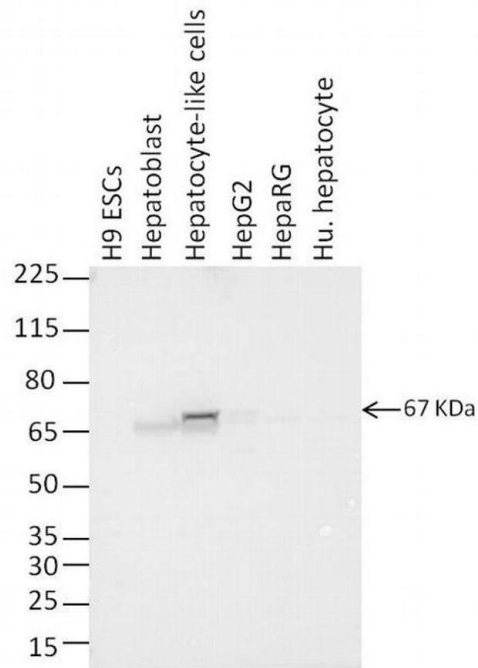
# F(ab')<sub>2</sub>-Goat anti-Mouse IgG (H+L) Highly Cross-Adsorbed Secondary Antibody, HRP

Product Details	
Size	500 µg
Species Reactivity	Mouse
Host/Isotype	Goat / IgG
Class	Polyclonal
Type	Secondary Antibody
Conjugate	HRP
Immunogen	Gamma Immunoglobins Heavy and Light chains
Form	Lyophilized
Concentration	1 mg/mL
Purification	Affinity Chromatography
Storage buffer	PBS, pH 7.2, with 1% BSA
Contains	0.1% ProClin 150
Storage conditions	Store at 4°C short term. For long term storage, store at -20°C, avoiding freeze/thaw cycles.
RRID	AB_2535987

Applications	Tested Dilution	Publications
Western Blot (WB)	1:500-1:20,000	0 Publication
Immunohistochemistry (IHC)	1:500-1:20,000	-
ELISA (ELISA)	1:500-1:20,000	-

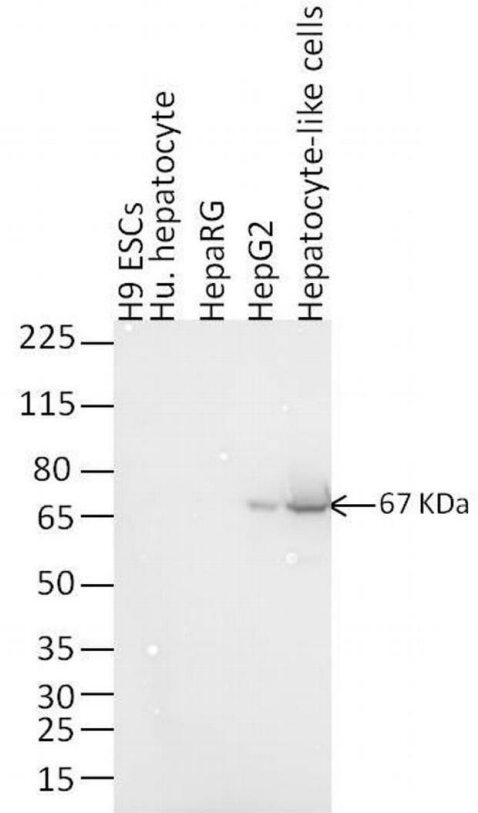
**Mouse IgG (H+L) Highly Cross-Adsorbed Secondary Antibody (A24518) in WB**

Western blot analysis of alpha-fetoprotein was performed by loading 10 µg of whole cell extract from H9 ESCs, H9 ESC-derived hepatoblasts, ESC-derived hepatocyte-like cells, HepG2 cells, HepaRG cells, and primary human hepatocytes in reducing conditions and 10 µL Spectra™ Multicolor Broad Range Protein Ladder (Product # 26634) per well onto a Novex Bolt® 4-12% Bis-Tris Plus Gel with Bolt® MOPS running buffer and Bolt® Antioxidant. Proteins were transferred to a PVDF membrane using the iBlot 2 Dry Blotting System (Product # IB21001), and blocked with 5% non-fat milk in TBST for 1 hour at room temperature. alpha-Fetoprotein was detected at 67 kDa using an alpha-fetoprotein monoclonal antibody (Product # MA5-14666) at a concentration of 1 µg/mL in 5% non-fat milk in TBST overnight at 4°C on a rocking platform, followed by a goat anti-mouse secondary antibody (Product # A24518) at a dilution of 1:10,000 for 1 hour at room temperature. Chemiluminescent detection was performed using Pierce™ ECL Western Blotting Substrate (Product # 32106).



**Mouse IgG (H+L) Highly Cross-Adsorbed Secondary Antibody (A24518) in WB**

Western blot analysis of alpha-fetoprotein was performed by loading 10 µg of whole cell extract from H9 ESCs, primary human hepatocytes, HepaRG cells, HepG2 cells, and H9 ESC-derived hepatocytes-like cells in reducing conditions and 10 µL Spectra™ Multicolor Broad Range Protein Ladder (Product # 26634) per well onto a Novex Bolt® 4-12% Bis-Tris Plus Gel with Bolt® MOPS running buffer and Bolt® Antioxidant. Proteins were transferred to a PVDF membrane using the iBlot 2 Dry Blotting System (Product # IB21001), and blocked with 5% non-fat milk in TBST for 1 hour at room temperature. alpha-Fetoprotein was detected at 67 kDa using an alpha-fetoprotein monoclonal antibody (Product # MA5-14665) at a concentration of 1 µg/mL in 5% non-fat milk in TBST overnight at 4°C on a rocking platform, followed by a goat anti-mouse secondary antibody (Product # A24518) at a dilution of 1:10,000 for 1 hour at room temperature. Chemiluminescent detection was performed using Pierce™ ECL Western Blotting Substrate (Product # 32106).



## 5 References

TERT Expression in Wilms Tumor Is Regulated by Promoter Mutation or Hypermethylation, WT1, and N-MYC. *Cancers (Basel)* (2022)

SARS-CoV-2 B.1.1.7 (alpha) and B.1.351 (beta) variants induce pathogenic patterns in K18-hACE2 transgenic mice distinct from early strains. *Nat Commun* (2021)

Maintenance of Miranda Localization in *Drosophila* Neuroblasts Involves Interaction with the Cognate mRNA. *Curr Biol* (2017)

Nanoconjugation of PSMA-Targeting Ligands Enhances Perinuclear Localization and Improves Efficacy of Delivered Alpha-Particle Emitters against Tumor Endothelial Analogues. *Mol Cancer Ther* (2016)

Imidazole-based alkaloid derivative LCB54-0009 suppresses ocular angiogenesis and lymphangiogenesis in models of experimental retinopathy and corneal neovascularization. *Br J Pharmacol* (2015)

For Research Use Only. Not for use in diagnostic procedures. Not for resale without express authorization. Products are warranted to operate or perform substantially in conformance with published Product specifications in effect at the time of sale, as set forth in the Production documentation, specifications and/or accompanying package inserts ("Documentation"). No claim of suitability for use in applications regulated by FDA is made. The warranty provided herein is valid only when used by properly trained individuals. Unless otherwise stated in the Documentation, this warranty is limited to one year from date of shipment when the Product is subjected to normal, proper and intended usage. This warranty does not extend to anyone other than the Buyer. Any model or sample furnished to Buyer is merely illustrative of the general type and quality of goods and does not represent that any Product will conform to such model or sample. NO OTHER WARRANTIES, EXPRESS OR IMPLIED, ARE GRANTED INCLUDING WITHOUT LIMITATION, IMPLIED WARRANTIES OF MERCHANTABILITY, FITNESS FOR ANY PARTICULAR PURPOSE, OR NON INFRINGEMENT. BUYER'S EXCLUSIVE REMEDY FOR NON-CONFORMING PRODUCTS DURING THE WARRANTY PERIOD IS LIMITED TO REPAIR, REPLACEMENT OF OR REFUND FOR THE NON-CONFORMING PRODUCT(S) AT SELLER'S SOLE OPTION. THERE IS NO OBLIGATION TO REPAIR, REPLACE OR REFUND FOR PRODUCTS AS THE RESULT OF (i) ACCIDENT, DISASTER OR EVENT OF FORCE MAJEURE, (ii) MISUSE, FAULT OR NEGLIGENCE OF OR BY BUYER, (iii) USE OF THE PRODUCTS IN A MANNER FOR WHICH THEY WERE NOT DESIGNED, OR (iv) IMPROPER STORAGE AND HANDLING OF THE PRODUCTS. Unless otherwise expressly stated on the Product or in the documentation accompanying the Product, the Product is intended for research only and is not to be used for any other purpose, including without limitation, unauthorized commercial uses, in vitro diagnostic uses, ex vivo or in vivo therapeutic uses, or any type of consumption by or application to human or animals.