

F(ab')₂-Goat anti-Mouse IgG (H+L) Cross-Adsorbed Secondary Antibody, Biotin

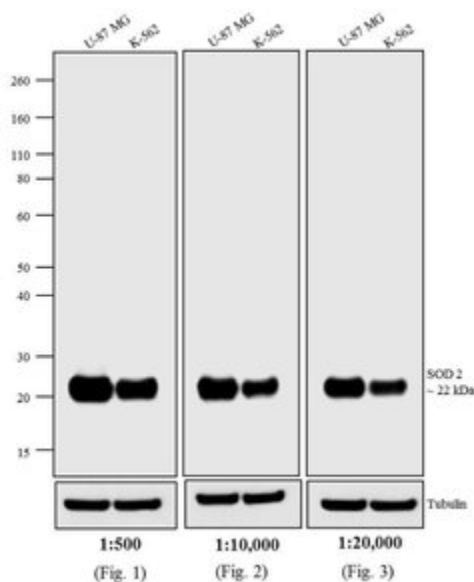
Product Details	
Size	500 µg
Species Reactivity	Mouse
Host/Isotope	Goat / IgG
Class	Polyclonal
Type	Secondary Antibody
Conjugate	Biotin
Immunogen	Gamma Immunoglobins Heavy and Light chains
Form	Liquid
Purification	purified
Storage buffer	PBS, pH 7.2, with 1% BSA
Contains	0.05% sodium azide
Storage Conditions	Store at 4°C short term. For long term storage, store at -20°C, avoiding freeze/thaw cycles.
RRID	AB_2535997

Applications	Tested Dilution	Publications
ELISA (ELISA)	1:500-1:20,000	-
Flow Cytometry (Flow)	1:500-1:20,000	-
Immunofluorescence (IF)	1:500-1:20,000	-
Western Blot (WB)	1:500-1:20,000	-

Product Images For F(ab')₂-Goat anti-Mouse IgG (H+L) Cross-Adsorbed Secondary Antibody, Biotin

Mouse IgG (H+L) Cross-Adsorbed Secondary Antibody (A24528) in WB

Western blot analysis was performed on whole cell extracts (30 µg lysate) of U-87 MG (Lane 1) and K-562 (Lane 2). The blots were probed with Anti-SOD2 Mouse Monoclonal Antibody (Product # MA1-106, 2 µg/mL) and detected by chemiluminescence using F(ab')₂-Goat anti-Mouse IgG (H+L) Cross-Adsorbed Secondary Antibody, Biotin (Product # A24528) at dilutions 1:500 (Fig. 1), 1:10,000 (Fig. 2) and 1:20,000 (Fig. 3). A 22 kDa band corresponding to SOD2 was observed. Known quantity of protein samples were electrophoresed using Novex® NuPAGE®12 % Bis-Tris gel (Product # NP0342BOX), XCell SureLock™ Electrophoresis System (Product # EI0002) and Novex® Sharp Pre-Stained Protein Standard (Product # LC5800). Resolved proteins were then transferred onto a nitrocellulose membrane with iBlot® 2 Dry Blotting System (Product # IB21001). The membrane was probed with the relevant primary and secondary antibody after blocking with 5 % skimmed milk. This is followed by incubating the membrane with Poly-HRP Streptavidin (Product # N200, 1:10,000). Chemiluminescent detection was performed using Pierce™ ECL Western Blotting Substrate (Product # 32106).



For Research Use Only. Not for use in diagnostic procedures. Not for resale without express authorization. Products are warranted to operate or perform substantially in conformance with published Product specifications in effect at the time of sale, as set forth in the Production documentation, specifications and/or accompanying package inserts ("Documentation"). No claim of suitability for use in applications regulated by FDA is made. The warranty provided herein is valid only when used by properly trained individuals. Unless otherwise stated in the Documentation, this warranty is limited to one year from date of shipment when the Product is subjected to normal, proper and intended usage. This warranty does not extend to anyone other than the Buyer. Any model or sample furnished to Buyer is merely illustrative of the general type and quality of goods and does not represent that any Product will conform to such model or sample. NO OTHER WARRANTIES, EXPRESS OR IMPLIED, ARE GRANTED INCLUDING WITHOUT LIMITATION, IMPLIED WARRANTIES OF MERCHANTABILITY, FITNESS FOR ANY PARTICULAR PURPOSE, OR NON INFRINGEMENT. BUYER'S EXCLUSIVE REMEDY FOR NON-CONFORMING PRODUCTS DURING THE WARRANTY PERIOD IS LIMITED TO REPAIR, REPLACEMENT OF OR REFUND FOR THE NON-CONFORMING PRODUCT(S) AT SELLER'S SOLE OPTION. THERE IS NO OBLIGATION TO REPAIR, REPLACE OR REFUND FOR PRODUCTS AS THE RESULT OF (I) ACCIDENT, DISASTER OR EVENT OF FORCE MAJEURE, (II) MISUSE, FAULT OR NEGLIGENCE OF OR BY BUYER, (III) USE OF THE PRODUCTS IN A MANNER FOR WHICH THEY WERE NOT DESIGNED, OR (IV) IMPROPER STORAGE AND HANDLING OF THE PRODUCTS. Unless otherwise expressly stated on the Product or in the documentation accompanying the Product, the Product is intended for research only and is not to be used for any other purpose, including without limitation, unauthorized commercial uses, in vitro diagnostic uses, ex vivo or in vivo therapeutic uses, or any type of consumption by or application to human or animals.