

Rabbit anti-Mouse IgG (H+L), Superclonal™ Recombinant Secondary Antibody, Alexa Fluor 680

Product Details	
Size	1 mg
Species Reactivity	Mouse
Host/Isotope	Rabbit / IgG
Class	Recombinant Polyclonal
Type	Secondary Antibody
Conjugate	Alexa Fluor® 680
Immunogen	Recombinant full-length protein
Form	Liquid
Concentration	1 mg/mL
Purification	Protein A
Storage buffer	PBS, pH 7.2
Contains	5mM sodium azide
Storage Conditions	4° C, store in dark, DO NOT FREEZE!
RRID	AB_2536094

Applications	Tested	Dilution	Published
Western Blot (WB)	✓	0.05-2 µg/mL	

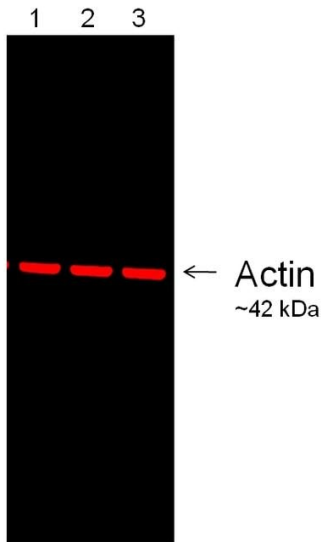
Product Specific Information

The sensitivity and specificity of each lot is confirmed using Western blot.

Minimal cross-reactivity with rabbit, mouse, rat, human, bovine, guinea pig and donkey IgG is observed.

Recombinant rabbit polyclonal antibodies are unique offerings from Thermo Fisher Scientific. They are comprised of a selection of multiple different recombinant monoclonal antibodies, providing the best of both worlds – the sensitivity of polyclonal antibodies with the specificity of monoclonal antibodies - all delivered with the consistency only found in a recombinant antibody. While functionally the same as a polyclonal antibody – recognizing multiple epitope sites on the target and producing higher detection sensitivity for low abundance targets – a recombinant rabbit polyclonal antibody has a known mixture of light and heavy chains. The exact population can be produced in every lot, circumventing the biological variability typically associated with polyclonal antibody production.

Product Images For Rabbit anti-Mouse IgG (H+L), Superclonal™ Recombinant Secondary Antibody, Alexa Fluor 680



Mouse IgG (H+L) Secondary Antibody (A27031) in WB

Expression of endogenous alpha-Tubulin was detected at 50 KDa using Mouse anti-alpha-Tubulin primary antibody (Product # 32-2500) (1:3000) and Recombinant Rabbit anti-Mouse IgG (H+L) Superclonal Secondary Antibody, Alexa Fluor 680 Conjugate (Product # A27031) (1 µg/mL 1:1000 dilution). Western blot analysis was performed on whole cell extracts (30 µg lysate) of HeLa human cervical carcinoma cells (lane 1-3) using the Xcell Surelock Electrophoresis system and iBlot® Dry Blotting System.

For Research Use Only. Not for use in diagnostic procedures. Not for resale without express authorization. Products are warranted to operate or perform substantially in conformance with published Product specifications in effect at the time of sale, as set forth in the Production documentation, specifications and/or accompanying package inserts ("Documentation"). No claim of suitability for use in applications regulated by FDA is made. The warranty provided herein is valid only when used by properly trained individuals. Unless otherwise stated in the Documentation, this warranty is limited to one year from date of shipment when the Product is subjected to normal, proper and intended usage. This warranty does not extend to anyone other than the Buyer. Any model or sample furnished to Buyer is merely illustrative of the general type and quality of goods and does not represent that any Product will conform to such model or sample. NO OTHER WARRANTIES, EXPRESS OR IMPLIED, ARE GRANTED INCLUDING WITHOUT LIMITATION, IMPLIED WARRANTIES OF MERCHANTABILITY, FITNESS FOR ANY PARTICULAR PURPOSE, OR NON INFRINGEMENT. BUYER'S EXCLUSIVE REMEDY FOR NON-CONFORMING PRODUCTS DURING THE WARRANTY PERIOD IS LIMITED TO REPAIR, REPLACEMENT OF OR REFUND FOR THE NON-CONFORMING PRODUCT(S) AT SELLER'S SOLE OPTION. THERE IS NO OBLIGATION TO REPAIR, REPLACE OR REFUND FOR PRODUCTS AS THE RESULT OF (I) ACCIDENT, DISASTER OR EVENT OF FORCE MAJEURE, (II) MISUSE, FAULT OR NEGLIGENCE OF OR BY BUYER, (III) USE OF THE PRODUCTS IN A MANNER FOR WHICH THEY WERE NOT DESIGNED, OR (IV) IMPROPER STORAGE AND HANDLING OF THE PRODUCTS. Unless otherwise expressly stated on the Product or in the documentation accompanying the Product, the Product is intended for research only and is not to be used for any other purpose, including without limitation, unauthorized commercial uses, in vitro diagnostic uses, ex vivo or in vivo therapeutic uses, or any type of consumption by or application to human or animals.