

Goat anti-Rabbit IgG (Heavy chain), Superclonal™ Recombinant Secondary Antibody, Alexa Fluor™ 555

Product Details

Size	1 mg
Species Reactivity	Rabbit
Host/Isotype	Goat / IgG
Expression system	Expi293
Class	Recombinant Polyclonal
Type	Secondary Antibody
Conjugate	Alexa Fluor™ 555
Excitation/Emission Max	553/568 nm
Immunogen	Recombinant full-length protein
Form	Liquid
Concentration	1 mg/mL
Purification	Gravity column chromatography
Storage buffer	PBS
Contains	5mM sodium azide
Storage conditions	4° C, store in dark, DO NOT FREEZE!
RRID	AB_2536100

Applications	Tested Dilution	Publications
Western Blot (WB)	1:5,000-1:10,000	-
Immunohistochemistry (IHC)	-	0 Publication
Immunohistochemistry (Frozen) (IHC (F))	-	0 Publication
Immunocytochemistry (ICC/IF)	0.5 µg/mL	0 Publication
Miscellaneous PubMed (Misc)	-	0 Publication

Product Specific Information

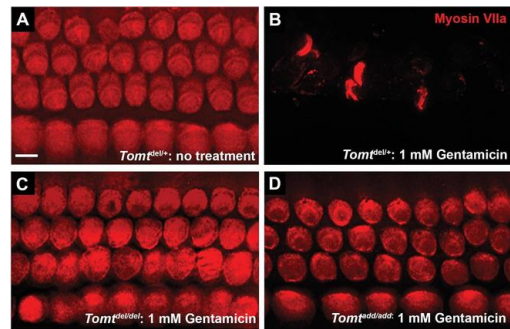
The sensitivity and specificity of each lot is confirmed using ELISA.

Minimal cross-reactivity with mouse, rat, human, bovine, guinea pig and donkey IgG is observed.

Recombinant antibodies are produced using specific genes that code for the desired antibodies. These genes are cloned into an expression vector and expressed in vitro. The advantages of recombinant antibodies include: better specificity, animal origin-free formulation, and more lot-to-lot consistency.

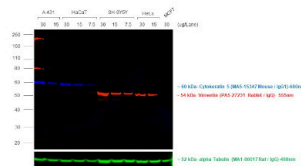
Rabbit IgG (Heavy chain) Secondary Antibody (A27039) in ICC/IF

Analysis of mechanotransduction in Tomt mutants. (A-D) P5 explants from middle region of the cochlea cultured for 24 hr with or without 1 mM Gentamicin, followed by fixation and immunostaining for MYO7A. (A) Tomtdel/+ cultured without Gentamicin. (B) Tomtdel/+ cultured for 24 hr with 1 mM Gentamicin. Note the almost complete loss of hair cells. (C) Tomtdel/del cultured for 24 hr with 1 mM Gentamicin. Hair cells are spared from Gentamicin-mediated ototoxicity. (D) Tomtadd/add cultured for 24 hr with 1 mM Gentamicin. Hair cells are spared from Gentamicin-mediated ototoxicity. (E) Representative mechanotransduction currents in OHCs from Tomtadd/+ and Tomtadd/add mice at P7 in response to a set of 10 ms hair bundle deflections ranging from 400 nm to 1000 nm (100 nm steps). (F) Current displacement plot obtained from similar data as shown in (E). Data are mean ± SEM. (G) Summary of data obtained from experiments as shown in (E-F) for Tomtadd/+ and Tomtadd/add at P4 and P7. Data are plotted as maximum MET currents. Number of cells tested is indicated on each column of the graph. Scale bar in (B) = 5 μm and applies to (A-D). DOI: <http://dx.doi.org/10.7554/eLife.24318.007> Basic membrane properties of cochlear hair cells in Tomt mutants. (A) Membrane potential (in millivolts (mV)) of outer hair cells from P6 Tomtadd/+ and Tomtadd/add mice current-clamped at 0 picoamps. Number of cells is indicated on... Image collected and cropped by CiteAb from the following publication (<https://pubmed.ncbi.nlm.nih.gov/28504928>), licensed under a CC BY license.



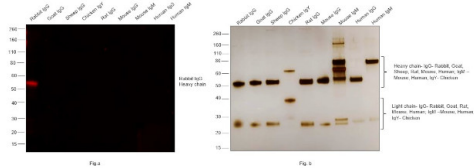
Rabbit IgG (Heavy chain) Secondary Antibody (A27039) in WB

Multiplexed fluorescent western blot was performed using Goat anti-Rabbit IgG (Heavy Chain), Superclonal™ Recombinant Secondary Antibody, Alexa Fluor 555 (Product # A27039). Whole cell extracts of A-431 (Lane 1, 2), HaCaT (Lane 3, 4, 5), SH-SY5Y (Lane 6, 7, 8), HeLa (Lane 9, 10) and MCF7 (Lane 11) were electrophoresed using NuPAGE™ 4-12% Bis-Tris Protein Gel (Product # NP03222BOX). Resolved proteins were transferred onto nitrocellulose membrane (Product # IB23001) by iBlot® 2 Dry Blotting System (Product # IB21001). The blot was probed with Cytokeratin 5 Monoclonal Antibody (3E2F1) (Product # MA5-15347), Vimentin Polyclonal Antibody (Product # PA5-27231) and alpha Tubulin Monoclonal Antibody (YL1/2) (Product # MA1-80017). Secondary antibodies (Product # A-21058, 1:20,000), (Product # A27039, 1:10,000) and (Product # A48269, 1:10,000) were used for detection of Cytokeratin 5, Vimentin and alpha Tubulin respectively. Fluorescent detection was performed using iBright™ FL1500 (Product # A44115). The anti-rabbit secondary antibody (Product # A27039) specifically detects the rabbit primary antibody.



Rabbit IgG (Heavy chain) Secondary Antibody (A27039)

Specificity of secondary antibody was demonstrated by specific detection of the target immunoglobulin. Antibody specificity was demonstrated by specific detection of Rabbit IgG. A band at ~55 kDa corresponding to Rabbit IgG Heavy Chain was observed in Rabbit IgG but not in other species using Goat anti-Rabbit IgG (Heavy Chain), Superclonal™ Recombinant Secondary Antibody, Alexa Fluor™ 555 (Product # A27039) in Western Blot. {RE}



View more figures on thermofisher.com

HDAC2 counteracts vascular calcification by activating autophagy in chronic kidney disease. FASEB J (2024)

IB kinase phosphorylates cytoplasmic TDP-43 and promotes its proteasome degradation. J Cell Biol (2024)

TIFA contributes to periodontitis in diabetic mice via activating the NFB signaling pathway. Mol Med Rep (2024)

SH3RF2 contributes to cisplatin resistance in ovarian cancer cells by promoting RBPMS degradation. Commun Biol (2024)

ROR2 expression predicts human induced pluripotent stem cell differentiation into neural stem/progenitor cells and GABAergic neurons. Sci Rep (2024)

For Research Use Only. Not for use in diagnostic procedures. Not for resale without express authorization. Products are warranted to operate or perform substantially in conformance with published Product specifications in effect at the time of sale, as set forth in the Production documentation, specifications and/or accompanying package inserts ("Documentation"). No claim of suitability for use in applications regulated by FDA is made. The warranty provided herein is valid only when used by properly trained individuals. Unless otherwise stated in the Documentation, this warranty is limited to one year from date of shipment when the Product is subjected to normal, proper and intended usage. This warranty does not extend to anyone other than the Buyer. Any model or sample furnished to Buyer is merely illustrative of the general type and quality of goods and does not represent that any Product will conform to such model or sample. NO OTHER WARRANTIES, EXPRESS OR IMPLIED, ARE GRANTED INCLUDING WITHOUT LIMITATION, IMPLIED WARRANTIES OF MERCHANTABILITY, FITNESS FOR ANY PARTICULAR PURPOSE, OR NON INFRINGEMENT. BUYER'S EXCLUSIVE REMEDY FOR NON-CONFORMING PRODUCTS DURING THE WARRANTY PERIOD IS LIMITED TO REPAIR, REPLACEMENT OF OR REFUND FOR THE NON-CONFORMING PRODUCT(S) AT SELLER'S SOLE OPTION. THERE IS NO OBLIGATION TO REPAIR, REPLACE OR REFUND FOR PRODUCTS AS THE RESULT OF (i) ACCIDENT, DISASTER OR EVENT OF FORCE MAJEURE, (ii) MISUSE, FAULT OR NEGLIGENCE OF OR BY BUYER, (iii) USE OF THE PRODUCTS IN A MANNER FOR WHICH THEY WERE NOT DESIGNED, OR (iv) IMPROPER STORAGE AND HANDLING OF THE PRODUCTS. Unless otherwise expressly stated on the Product or in the documentation accompanying the Product, the Product is intended for research only and is not to be used for any other purpose, including without limitation, unauthorized commercial uses, in vitro diagnostic uses, ex vivo or in vivo therapeutic uses, or any type of consumption by or application to human or animals.