

Rabbit anti-Human lambda light chain Recombinant Secondary Antibody, Biotin

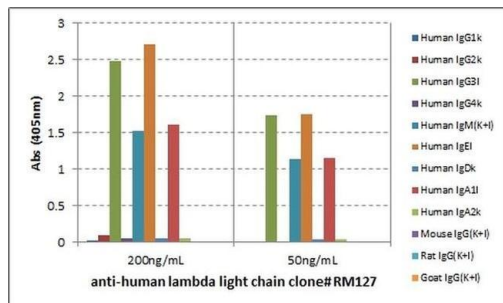
Product Details	
Size	50 µg
Species Reactivity	Human
Host/Isotype	Rabbit / IgG
Class	Recombinant Monoclonal
Type	Secondary Antibody
Clone	RM127
Conjugate	Biotin
Immunogen	Human IgG
Form	Liquid
Concentration	1 mg/mL
Purification	Protein A
Storage buffer	PBS with 1% BSA, 50% glycerol
Contains	0.09% sodium azide
Storage conditions	-20°C
RRID	AB_2744983

Applications	Tested Dilution	Publications
Immunohistochemistry (IHC)	0.5-2 µg/mL	-
Immunocytochemistry (ICC/IF)	0.5-2 µg/mL	-
Flow Cytometry (Flow)	0.2-2 µg/mL	-
ELISA (ELISA)	0.05-0.2 µg/mL	-

Product Specific Information

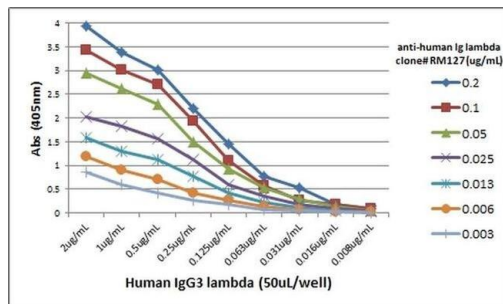
Recombinant rabbit monoclonal antibodies are produced using in vitro expression systems. The expression systems are developed by cloning in the specific antibody DNA sequences from immunoreactive rabbits. Then, individual clones are screened to select the best candidates for production. The advantages of using recombinant rabbit monoclonal antibodies include: better specificity and sensitivity, lot-to-lot consistency, animal origin-free formulations, and broader immunoreactivity to diverse targets due to larger rabbit immune repertoire.

Product Images For Rabbit anti-Human lambda light chain Recombinant Secondary Antibody, Biotin



Human lambda light chain Secondary Antibody (MA5-27945) in ELISA

ELISA analysis of Human lambda light chain with human immunoglobulins at a concentration of 50 ng/well. Sample was incubated with Human lambda light chain monoclonal antibody (Product # MA5-27945) using a dilution of 200 ng/mL and 50 ng/mL, followed by alkaline phosphatase conjugated anti-rabbit IgG secondary antibody. There was no cross reaction to kappa light chain, mouse IgG, rat IgG, or goat IgG.



Human lambda light chain Secondary Antibody (MA5-27945) in ELISA

ELISA titer analysis of Human lambda light chain with human IgG3 lambda. Sample was incubated with Human lambda light chain monoclonal antibody (Product # MA5-27945) using a serial dilution, followed by alkaline phosphatase conjugated anti-rabbit IgG secondary antibody.

For Research Use Only. Not for use in diagnostic procedures. Not for resale without express authorization. Products are warranted to operate or perform substantially in conformance with published Product specifications in effect at the time of sale, as set forth in the Production documentation, specifications and/or accompanying package inserts ("Documentation"). No claim of suitability for use in applications regulated by FDA is made. The warranty provided herein is valid only when used by properly trained individuals. Unless otherwise stated in the Documentation, this warranty is limited to one year from date of shipment when the Product is subjected to normal, proper and intended usage. This warranty does not extend to anyone other than the Buyer. Any model or sample furnished to Buyer is merely illustrative of the general type and quality of goods and does not represent that any Product will conform to such model or sample. NO OTHER WARRANTIES, EXPRESS OR IMPLIED, ARE GRANTED INCLUDING WITHOUT LIMITATION, IMPLIED WARRANTIES OF MERCHANTABILITY, FITNESS FOR ANY PARTICULAR PURPOSE, OR NON INFRINGEMENT. BUYER'S EXCLUSIVE REMEDY FOR NON-CONFORMING PRODUCTS DURING THE WARRANTY PERIOD IS LIMITED TO REPAIR, REPLACEMENT OF OR REFUND FOR THE NON-CONFORMING PRODUCT(S) AT SELLER'S SOLE OPTION. THERE IS NO OBLIGATION TO REPAIR, REPLACE OR REFUND FOR PRODUCTS AS THE RESULT OF (I) ACCIDENT, DISASTER OR EVENT OF FORCE MAJEURE, (II) MISUSE, FAULT OR NEGLIGENCE OF OR BY BUYER, (III) USE OF THE PRODUCTS IN A MANNER FOR WHICH THEY WERE NOT DESIGNED, OR (IV) IMPROPER STORAGE AND HANDLING OF THE PRODUCTS. Unless otherwise expressly stated on the Product or in the documentation accompanying the Product, the Product is intended for research only and is not to be used for any other purpose, including without limitation, unauthorized commercial uses, in vitro diagnostic uses, ex vivo or in vivo therapeutic uses, or any type of consumption by or application to human or animals.