

# Sheep anti-Rat IgG (H+L) Secondary Antibody, AP

Product Details	
Size	1 mg
Species Reactivity	Rat
Host/Isotype	Sheep / IgG
Class	Polyclonal
Type	Secondary Antibody
Conjugate	AP
Immunogen	Rat IgG whole molecule
Form	Liquid
Concentration	1.0 mg/mL
Purification	IgG fraction
Storage buffer	0.05M tris HCl, pH 8.0, with 0.15M NaCl, 10mg/mL BSA, 0.001M MgCl <sub>2</sub> , 0.0001M ZnCl <sub>2</sub> , 50% glycerol
Contains	0.01% sodium azide
Storage Conditions	4° C, do not freeze
RRID	AB_10980324

Applications	Tested Dilution	Publications
Western Blot (WB)	1:500-1:2500	-
Immunohistochemistry (IHC)	1:200-1:1,000	-
ELISA (ELISA)	1:2,000-1:10,000	-

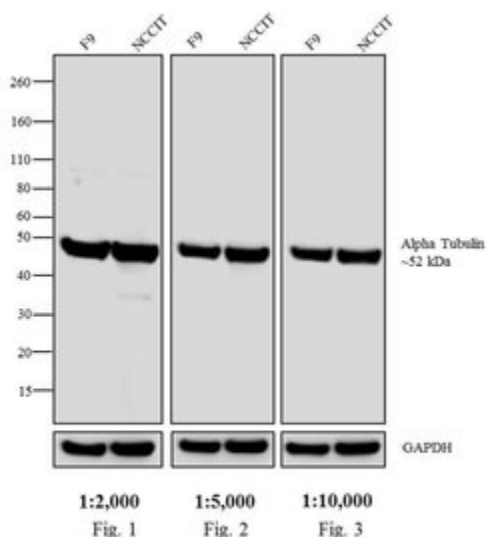
## Product Specific Information

PA1-30363 detects Rat IgG from rat samples.

## Product Images For Sheep anti-Rat IgG (H+L) Secondary Antibody, AP

### Rat IgG (H+L) Secondary Antibody (PA1-30363) in WB

Western blot analysis was performed on whole cell extracts (30 µg lysate) of F9 (Lane 1) and NCCIT (Lane 2). The blots were probed with Anti-alpha Tubulin Monoclonal Antibody (Product # MA1-80017, 1 µg/mL) and detected by chemiluminescence of alkaline phosphatase (AP) using Sheep anti-Rat IgG Secondary Antibody, AP conjugate (Product # PA1-30363) at dilutions 1:2,000 (Fig. 1), 1:5,000 (Fig. 2) and 1:10,000 (Fig. 3). A 52 kDa band corresponding to alpha Tubulin was observed across cell lines tested. Known quantity of protein samples were electrophoresed using Novex® NuPAGE® 12 % Bis-Tris gel (Product # NP0342BOX), XCell SureLock™ Electrophoresis System (Product # EI0002) and Novex® Sharp Pre-Stained Protein Standard (Product # LC5800). Resolved proteins were then transferred onto a nitrocellulose membrane with iBlot® 2 Dry Blotting System (Product # IB21001). The membrane was probed with the relevant primary and secondary antibody after blocking with 5 % skimmed milk. Chemiluminescent detection of alkaline phosphatase (AP) was performed using Novex® AP Chemiluminescent Substrate (CDP-Star®) (Product # WP20002) with Novex® AP Chemiluminescent Substrate Enhancer (Nitro Block II™) (Product # WP20003).



For Research Use Only. Not for use in diagnostic procedures. Not for resale without express authorization. Products are warranted to operate or perform substantially in conformance with published Product specifications in effect at the time of sale, as set forth in the Production documentation, specifications and/or accompanying package inserts ("Documentation"). No claim of suitability for use in applications regulated by FDA is made. The warranty provided herein is valid only when used by properly trained individuals. Unless otherwise stated in the Documentation, this warranty is limited to one year from date of shipment when the Product is subjected to normal, proper and intended usage. This warranty does not extend to anyone other than the Buyer. Any model or sample furnished to Buyer is merely illustrative of the general type and quality of goods and does not represent that any Product will conform to such model or sample. NO OTHER WARRANTIES, EXPRESS OR IMPLIED, ARE GRANTED INCLUDING WITHOUT LIMITATION, IMPLIED WARRANTIES OF MERCHANTABILITY, FITNESS FOR ANY PARTICULAR PURPOSE, OR NON INFRINGEMENT. BUYER'S EXCLUSIVE REMEDY FOR NON-CONFORMING PRODUCTS DURING THE WARRANTY PERIOD IS LIMITED TO REPAIR, REPLACEMENT OF OR REFUND FOR THE NON-CONFORMING PRODUCT(S) AT SELLER'S SOLE OPTION. THERE IS NO OBLIGATION TO REPAIR, REPLACE OR REFUND FOR PRODUCTS AS THE RESULT OF (I) ACCIDENT, DISASTER OR EVENT OF FORCE MAJEURE, (II) MISUSE, FAULT OR NEGLIGENCE OF OR BY BUYER, (III) USE OF THE PRODUCTS IN A MANNER FOR WHICH THEY WERE NOT DESIGNED, OR (IV) IMPROPER STORAGE AND HANDLING OF THE PRODUCTS. Unless otherwise expressly stated on the Product or in the documentation accompanying the Product, the Product is intended for research only and is not to be used for any other purpose, including without limitation, unauthorized commercial uses, in vitro diagnostic uses, ex vivo or in vivo therapeutic uses, or any type of consumption by or application to human or animals.