

F(ab')₂-Goat anti-Rabbit IgG (H+L) Secondary Antibody, Qdot™ 655

Product Details

Size	100 µL
Species Reactivity	Rabbit
Host/Isotype	Goat / IgG
Class	Polyclonal
Type	Secondary Antibody
Conjugate	Qdot™ 655
Excitation/Emission Max	300/654 nm
Immunogen	Gamma Immunoglobins Heavy and Light chains
Form	Liquid
Purification	purified
Storage buffer	0.05M borate, pH 8.3, with 1M betaine
Contains	0.05% sodium azide
Storage conditions	4° C, store in dark
RRID	AB_10375438

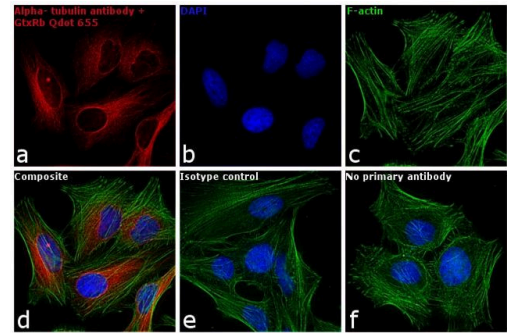
Applications	Tested Dilution	Publications
Western Blot (WB)	1:50	0 Publication
Immunohistochemistry (IHC)	1:50	-
Immunocytochemistry (ICC/IF)	1:100	-
Flow Cytometry (Flow)	1:50	-
Miscellaneous PubMed (Misc)	-	0 Publication

Product Specific Information

Qdot nanocrystals are composed of semi-conductor material to generate a fluorescent particle which is exceptionally bright and does not photobleach. Qdot nanocrystals paired with the correct optical filters are as much as 50 times brighter than traditional organic dyes.

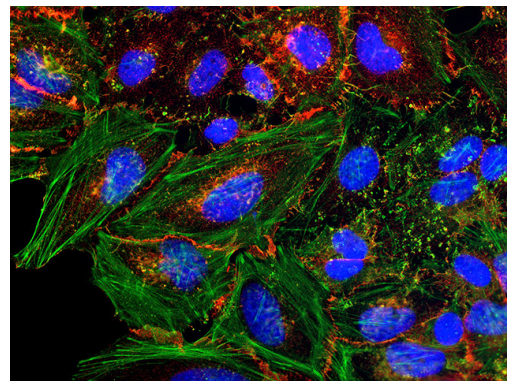
Rabbit IgG (H+L) Secondary Antibody (Q11422MP) in ICC/IF

Immunofluorescence analysis of F(ab')₂-Goat anti-Rabbit IgG (H+L) Secondary Antibody Qdot® 655 conjugate was performed using HeLa cells stained with alpha Tubulin Rabbit Polyclonal Antibody (Product # PA516891) The cells were fixed with 4% paraformaldehyde for 10 minutes, permeabilized with 0.1% Triton™ X-100 for 10 minutes, blocked with 1% BSA for 1 hour and labeled with 2 µg/mL primary antibody for 3 hours at room temperature. F(ab')₂-Goat anti-Rabbit IgG (H+L) Secondary Antibody Qdot® 655 conjugate (Product # Q-11422MP) was used at a dilution of 1:50 in phosphate buffered saline containing 0.2% BSA for 45 minutes at room temperature, for detection of alpha Tubulin in the cytoplasm (Panel a: red). Nuclei (Panel b: blue) were stained with DAPI in SlowFade® Gold Antifade Mountant (Product # S36938). F-actin was stained with Alexa Fluor® 488 Phalloidin (Product # A12379), 1:300 (Panel c: green). Panel d represents the composite image. No nonspecific staining was observed with the secondary antibody alone (panel f), or with an isotype control (panel e). The images were captured at 60X magnification.



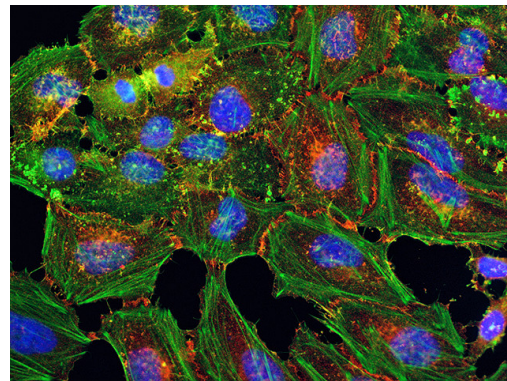
Rabbit IgG (H+L) Secondary Antibody (Q11422MP) in ICC/IF

HeLa cells were plated on coverslips overnight. The next day the cells were fixed and permeabilized using the Image-iT® Fixation/Permeabilization Kit (Product # R37602) according to protocol. Cells were then incubated with 3 µg/mL anti-B-catenin antibody (Product # 71-2700) for 60 min at room temperature followed by three washes with dPBS. Cells were then incubated with a 1:1000 dilution of goat anti-rabbit Qdot® 655 secondary antibody (Product # Q-11421MP) for 60 min, followed by three washes with dPBS. Cells were labeled with NucBlue® Live cell stain (Product # R37605) and ActinGreen™ 488 ReadyProbes® reagent (Product # R37110) according to protocol. Coverslips were then mounted using ProLong® Gold Antifade Reagent (Product # P36930). Images were taken using the EVOS® FL Auto Imaging System and a 40X Coverslip corrected objective (Product # AMEP4699).



Rabbit IgG (H+L) Secondary Antibody (Q11422MP) in ICC/IF

HeLa cells were plated on coverslips overnight. The next day the cells were fixed and permeabilized using the Image-iT® Fixation/Permeabilization Kit (Product # R37602) according to protocol. Cells were then incubated with 3 µg/mL anti-B-catenin antibody (Product # 71-2700) for 60 min at room temperature followed by three washes with dPBS. Cells were then incubated with a 1:1000 dilution of goat anti-rabbit Qdot® 655 secondary antibody (Product # Q-11421MP) for 60 min, followed by three washes with dPBS. Cells were labeled with NucBlue® Live cell stain (Product # R37605) and ActinGreen™ 488 ReadyProbes® reagent (Product # R37110) according to protocol. Coverslips were then mounted using ProLong® Gold Antifade Reagent (Product # P36930). Images were taken using the EVOS® FL Auto Imaging System and a 40X Coverslip corrected objective (Product # AMEP4699).



[View more figures on thermofisher.com](https://www.thermofisher.com)

21 References

Non-canonical interplay between glutamatergic NMDA and dopamine receptors shapes synaptogenesis. Nat Commun (2024)

Nanoscale and functional heterogeneity of the hippocampal extracellular space. Cell Rep (2023)

APP and Bace1: Differential effect of cholesterol enrichment on processing and plasma membrane mobility. iScience (2023)

Multi-Dimensional Spectral Single Molecule Localization Microscopy. Front Bioinform (2022)

Fast Regulation of GABAAR Diffusion Dynamics by Nogo-A Signaling. Cell Rep (2019)

For Research Use Only. Not for use in diagnostic procedures. Not for resale without express authorization. Products are warranted to operate or perform substantially in conformance with published Product specifications in effect at the time of sale, as set forth in the Production documentation, specifications and/or accompanying package inserts ("Documentation"). No claim of suitability for use in applications regulated by FDA is made. The warranty provided herein is valid only when used by properly trained individuals. Unless otherwise stated in the Documentation, this warranty is limited to one year from date of shipment when the Product is subjected to normal, proper and intended usage. This warranty does not extend to anyone other than the Buyer. Any model or sample furnished to Buyer is merely illustrative of the general type and quality of goods and does not represent that any Product will conform to such model or sample. NO OTHER WARRANTIES, EXPRESS OR IMPLIED, ARE GRANTED INCLUDING WITHOUT LIMITATION, IMPLIED WARRANTIES OF MERCHANTABILITY, FITNESS FOR ANY PARTICULAR PURPOSE, OR NON INFRINGEMENT. BUYER'S EXCLUSIVE REMEDY FOR NON-CONFORMING PRODUCTS DURING THE WARRANTY PERIOD IS LIMITED TO REPAIR, REPLACEMENT OF OR REFUND FOR THE NON-CONFORMING PRODUCT(S) AT SELLER'S SOLE OPTION. THERE IS NO OBLIGATION TO REPAIR, REPLACE OR REFUND FOR PRODUCTS AS THE RESULT OF (i) ACCIDENT, DISASTER OR EVENT OF FORCE MAJEURE, (ii) MISUSE, FAULT OR NEGLIGENCE OF OR BY BUYER, (iii) USE OF THE PRODUCTS IN A MANNER FOR WHICH THEY WERE NOT DESIGNED, OR (iv) IMPROPER STORAGE AND HANDLING OF THE PRODUCTS. Unless otherwise expressly stated on the Product or in the documentation accompanying the Product, the Product is intended for research only and is not to be used for any other purpose, including without limitation, unauthorized commercial uses, in vitro diagnostic uses, ex vivo or in vivo therapeutic uses, or any type of consumption by or application to human or animals.