

Goat anti-Rabbit IgG (H+L) Recombinant Secondary Antibody

Product Details	
Size	100 µg
Species Reactivity	Rabbit
Host/Isotype	Goat / IgG
Expression system	HEK293 cells
Class	Recombinant Monoclonal
Type	Secondary Antibody
Clone	RMG03
Conjugate	Unconjugated
Immunogen	Rabbit IgG.
Form	Liquid
Concentration	1.0 mg/mL
Purification	Protein G
Storage buffer	PBS with 1% BSA, 50% glycerol
Contains	0.09% sodium azide
Storage conditions	-20°C
RRID	AB_2810190

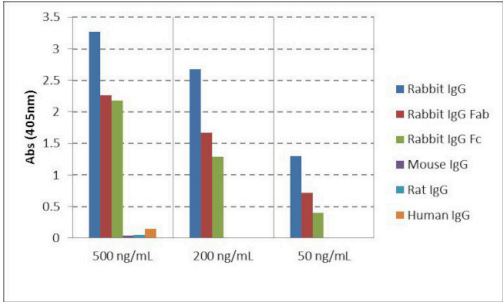
Applications	Tested Dilution	Publications
Western Blot (WB)	0.1-0.5 µg/mL	-
ELISA (ELISA)	0.01-0.5 µg/mL	-

Product Specific Information

Specificity: reacts to Rabbit IgG. No cross reactivity with human IgG, rat IgG, or mouse IgG.

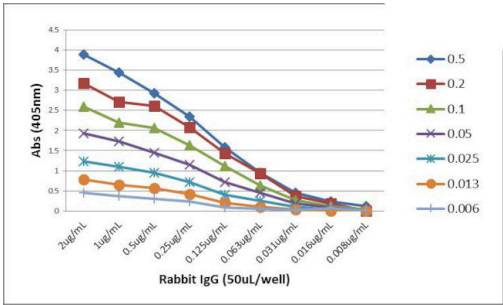
Recombinant antibodies are produced using specific genes that code for the desired antibodies. These genes are cloned into an expression vector and expressed in vitro. The advantages of recombinant antibodies include: better specificity, animal origin-free formulation, and more lot-to-lot consistency.

Product Images For Goat anti-Rabbit IgG (H+L) Recombinant Secondary Antibody



Rabbit IgG (H+L) Secondary Antibody (SA5-10232) in ELISA

ELISA analysis of anti-Rabbit IgG reactivity with IgGs from various species. Samples were incubated with Rabbit IgG monoclonal antibody (Product # SA5-10232) using a 500 ng/mL, 200 ng/mL, or 50 ng/mL dilution, followed by alkaline phosphatase conjugated anti-goat IgG.



Rabbit IgG (H+L) Secondary Antibody (SA5-10232) in ELISA

ELISA titer analysis of rabbit IgG. Samples were incubated with Rabbit IgG monoclonal antibody (Product # SA5-10232) using a 2, 1, 0.5, 0.25, 0.125, 0.063, 0.031, 0.016 and 0.008 µg/mL dilution, followed by alkaline phosphatase conjugated anti-goat IgG.

1 Reference

Remodeling neuronal ER-PM junctions is a conserved nonconducting function of Kv2 plasma membrane ion channels. Mol Biol Cell (2018)

For Research Use Only. Not for use in diagnostic procedures. Not for resale without express authorization. Products are warranted to operate or perform substantially in conformance with published Product specifications in effect at the time of sale, as set forth in the Production documentation, specifications and/or accompanying package inserts ("Documentation"). No claim of suitability for use in applications regulated by FDA is made. The warranty provided herein is valid only when used by properly trained individuals. Unless otherwise stated in the Documentation, this warranty is limited to one year from date of shipment when the Product is subjected to normal, proper and intended usage. This warranty does not extend to anyone other than the Buyer. Any model or sample furnished to Buyer is merely illustrative of the general type and quality of goods and does not represent that any Product will conform to such model or sample. NO OTHER WARRANTIES, EXPRESS OR IMPLIED, ARE GRANTED INCLUDING WITHOUT LIMITATION, IMPLIED WARRANTIES OF MERCHANTABILITY, FITNESS FOR ANY PARTICULAR PURPOSE, OR NON INFRINGEMENT. BUYER'S EXCLUSIVE REMEDY FOR NON-CONFORMING PRODUCTS DURING THE WARRANTY PERIOD IS LIMITED TO REPAIR, REPLACEMENT OF OR REFUND FOR THE NON-CONFORMING PRODUCT(S) AT SELLER'S SOLE OPTION. THERE IS NO OBLIGATION TO REPAIR, REPLACE OR REFUND FOR PRODUCTS AS THE RESULT OF (I) ACCIDENT, DISASTER OR EVENT OF FORCE MAJEURE, (II) MISUSE, FAULT OR NEGLIGENCE OF OR BY BUYER, (III) USE OF THE PRODUCTS IN A MANNER FOR WHICH THEY WERE NOT DESIGNED, OR (IV) IMPROPER STORAGE AND HANDLING OF THE PRODUCTS. Unless otherwise expressly stated on the Product or in the documentation accompanying the Product, the Product is intended for research only and is not to be used for any other purpose, including without limitation, unauthorized commercial uses, in vitro diagnostic uses, ex vivo or in vivo therapeutic uses, or any type of consumption by or application to human or animals.