

# Goat anti-Rabbit IgG (H+L) Secondary Antibody, WesternDot 625

## Product Details

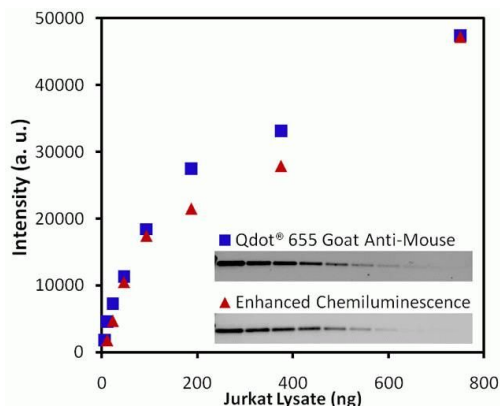
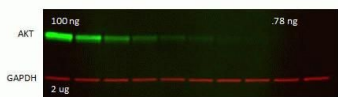
Size	25 blots
Species Reactivity	Rabbit
Host/Isotope	Goat / IgG
Class	Polyclonal
Type	Secondary Antibody
Conjugate	WesternDot® 625
Immunogen	Rabbit Immunoglobins
Form	Liquid
Purification	purified
Storage buffer	50mM borate, pH 8.3, with 1M betaine
Contains	0.05% sodium azide
Storage Conditions	4° C, do not freeze
RRID	AB_2556791

Applications	Tested	Dilution	Published
Western Blot (WB)	✓	1:500	

## Product Specific Information

WesternDot fluorescently labeled secondary antibodies deliver superior signal-to-noise ratios and exhibit comparable sensitivity to enhanced chemiluminescence (ECL)-based methods in western blot applications. No stripping and re-probing or multiple blots are required for multiple protein detection as commonly needed with ECL or colorimetric detection. Differently labeled WesternDot antibodies can be applied to a single blot for simultaneous detection of multiple proteins using standard gel or blot imaging platforms (a list of instruments that are compatible with WesternDot detection can be found in the user manual below). Our WesternDot antibodies utilize Qdot nanocrystals enhanced with VIVID technology, making them brighter than the original Qdot reagents. Additionally, they have reduced intensity differences between the different colors, simplifying multiplex applications.

## Product Images For Goat anti-Rabbit IgG (H+L) Secondary Antibody, WesternDot 625

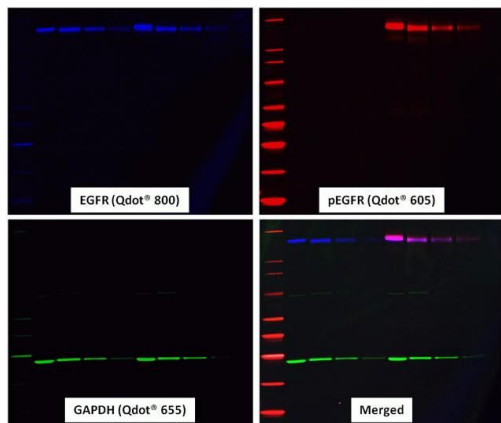


### Rabbit IgG (H+L) Secondary Antibody (W10809) in WB

Simultaneous detection of a protein of interest and a loading control on a single blot using WesternDot® secondary antibodies. A western blot containing a dilution series of recombinant AKT in a background of Jurkat lysate at a constant loading of 5 µg total protein. The blot was probed with mouse anti-AKT and rabbit anti-GAPDH, followed by WesternDot™ 655 goat anti-mouse (Product # W10813, pseudocolored green) and WesternDot™ 800 goat anti-rabbit (Product # W10816, pseudocolored red) conjugates and imaged using the Fujifilm® FLA-9000 imager.

### Rabbit IgG (H+L) Secondary Antibody (W10809) in WB

Comparison of enhanced chemiluminescence (ECL) and WesternDot® fluorescence-based western blot protein detection. Serial dilutions (750-3 ng protein) of GAPDH were run on NuPAGE® Novex® 4-12% Bis-Tris precast gels (Product # NP0321BOX) and transferred to iBlot® nitrocellulose membranes (Product # IB3010-32) using the iBlot® Gel Transfer Device (Product # IB1001). The membranes were probed with anti-GAPDH antibodies followed by either ECL detection using a horseradish peroxidase goat anti-mouse IgG or fluorescence detection using WesternDot® 655 goat anti-mouse IgG (Product # W10813). Images were collected using the Fujifilm® LAS-4000 gel imager. Partial blot images show GAPDH detection, and the graph shows the detection sensitivities of the two techniques.



### Rabbit IgG (H+L) Secondary Antibody (W10809) in WB

Simultaneous detection of three proteins on a single blot using Qdot® secondary antibody conjugates. A western blot containing serial dilutions (20-3 µg protein) of lysates from unstimulated (lanes 2-5) and hEGF-stimulated (lanes 6-9) A431 cells was probed with mouse anti-EGFR, rabbit anti-phospho-EGFR, and chicken anti-GAPDH antibodies, followed by (A) WesternDot® 800 goat anti-mouse (pseudocolored blue), (B) WesternDot® 605 goat anti-rabbit (pseudocolored red), and (C) WesternDot® 655 goat anti-chicken (pseudocolored green) conjugates. (D) The merged image shows overlaid red and blue bands as purple. The blot contains MagicMark™ XP Western Protein Standard (lane 1, Product # LC5603) and was imaged using the Fujifilm® LAS-4000 gel imager.

View more figures on [thermofisher.com](http://thermofisher.com)

For Research Use Only. Not for use in diagnostic procedures. Not for resale without express authorization. Products are warranted to operate or perform substantially in conformance with published Product specifications in effect at the time of sale, as set forth in the Production documentation, specifications and/or accompanying package inserts ("Documentation"). No claim of suitability for use in applications regulated by FDA is made. The warranty provided herein is valid only when used by properly trained individuals. Unless otherwise stated in the Documentation, this warranty is limited to one year from date of shipment when the Product is subjected to normal, proper and intended usage. This warranty does not extend to anyone other than the Buyer. Any model or sample furnished to Buyer is merely illustrative of the general type and quality of goods and does not represent that any Product will conform to such model or sample. NO OTHER WARRANTIES, EXPRESS OR IMPLIED, ARE GRANTED INCLUDING WITHOUT LIMITATION, IMPLIED WARRANTIES OF MERCHANTABILITY, FITNESS FOR ANY PARTICULAR PURPOSE, OR NON INFRINGEMENT. BUYER'S EXCLUSIVE REMEDY FOR NON-CONFORMING PRODUCTS DURING THE WARRANTY PERIOD IS LIMITED TO REPAIR, REPLACEMENT OF OR REFUND FOR THE NON-CONFORMING PRODUCT(S) AT SELLER'S SOLE OPTION. THERE IS NO OBLIGATION TO REPAIR, REPLACE OR REFUND FOR PRODUCTS AS THE RESULT OF (I) ACCIDENT, DISASTER OR EVENT OF FORCE MAJEURE, (II) MISUSE, FAULT OR NEGLIGENCE OF OR BY BUYER, (III) USE OF THE PRODUCTS IN A MANNER FOR WHICH THEY WERE NOT DESIGNED, OR (IV) IMPROPER STORAGE AND HANDLING OF THE PRODUCTS. Unless otherwise expressly stated on the Product or in the documentation accompanying the Product, the Product is intended for research only and is not to be used for any other purpose, including without limitation, unauthorized commercial uses, in vitro diagnostic uses, ex vivo or in vivo therapeutic uses, or any type of consumption by or application to human or animals.