

Aromatase Polyclonal Antibody

Catalog NumberPA1-21398

Product data sheet

| Details | | Species Reactivity | |
|--------------------|----------------------------------------------------------------------------------------------|-------------------------------------------|--------------------------------------------------------|
| Size | 50 µg | Species reactivity | Bovine, Chicken, Horse, Human, Mouse, Pig, Rabbit, Rat |
| Host/Isotope | Rabbit / IgG | Published species | Pig, Sheep, Bovine, Mouse, Human, Not Applicable |
| Class | Polyclonal | | |
| Type | Antibody | Tested Applications | |
| Immunogen | Synthetic peptide surrounding amino acid 385 of human Aromatase | Immunohistochemistry (Paraffin) (IHC (P)) | 10-20 µg/mL |
| Conjugate | Unconjugated | Western Blot (WB) | 0.5-4 µg/mL |
| Form | Liquid | Published Applications | |
| Concentration | 0.5 mg/mL | Western Blot (WB) | See 6 publications below |
| Purification | Antigen affinity chromatography | Immunohistochemistry (IHC) | See 2 publications below |
| Storage buffer | PBS, pH 7.2, with 30% glycerol, 5mM EDTA, 0.5% BSA | | |
| Contains | 0.03% ProClin 300 | | |
| Storage Conditions | Store at 4°C short term. For long term storage, store at -20°C, avoiding freeze/thaw cycles. | | |

* Suggested working dilutions are given as a guide only. It is recommended that the user titrate the product for use in their own experiment using appropriate negative and positive controls.

Product specific information

Store product as a concentrated solution. Centrifuge briefly prior to opening the vial.

Background/Target Information

This gene encodes a member of the cytochrome P450 superfamily of enzymes. The cytochrome P450 proteins are monooxygenases which catalyze many reactions involved in drug metabolism and synthesis of cholesterol, steroids and other lipids. This protein localizes to the endoplasmic reticulum and catalyzes the last steps of estrogen biosynthesis, three successive hydroxylations of the A ring of androgens. Mutations in this gene can result in either increased or decreased aromatase activity; the associated phenotypes suggest that estrogen functions both as a sex steroid hormone and in growth or differentiation. The gene expresses two transcript variants.

For Research Use Only. Not for use in diagnostic procedures. Not for resale without express authorization.

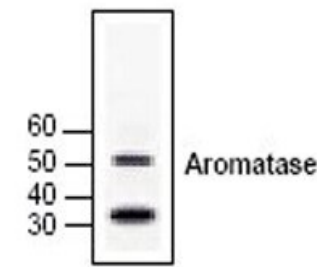
For Research Use Only. Not for use in diagnostic procedures. Not for resale without express authorization.

Products are warranted to operate or perform substantially in conformance with published Product specifications in effect at the time of sale, as set forth in the Production documentation, specifications and/or accompanying package inserts ("Documentation"). No claim of suitability for use in applications regulated by FDA is made. The warranty provided herein is valid only when used by properly trained individuals. Unless otherwise stated in the Documentation, this warranty is limited to one year from date of shipment when the Product is subjected to normal, proper and intended usage. This warranty does not extend to anyone other than the Buyer. Any model or sample furnished to Buyer is merely illustrative of the general type and quality of goods and does not represent that any Product will conform to such model or sample.

NO OTHER WARRANTIES, EXPRESS OR IMPLIED, ARE GRANTED INCLUDING WITHOUT LIMITATION, IMPLIED WARRANTIES OF MERCHANTABILITY, FITNESS FOR ANY PARTICULAR PURPOSE, OR NON-INFRINGEMENT. BUYER'S EXCLUSIVE REMEDY FOR NON-CONFORMING PRODUCTS DURING THE WARRANTY PERIOD IS LIMITED TO REPAIR, REPLACEMENT OF OR REFUND FOR THE NON-CONFORMING PRODUCT(S) AT SELLER'S SOLE OPTION. THERE IS NO OBLIGATION TO REPAIR, REPLACE OR REFUND FOR PRODUCTS AS THE RESULT OF (i) ACCIDENT, DISASTER OR EVENT OF FORCE MAJEURE, (ii) MISUSE, FAULT OR NEGLIGENCE OF OR BY BUYER, (iii) USE OF THE PRODUCTS IN A MANNER FOR WHICH THEY WERE NOT DESIGNED, OR (iv) IMPROPER STORAGE AND HANDLING OF THE PRODUCTS. Unless otherwise expressly stated on the Product or in the documentation accompanying the Product, the Product is intended for research only and is not to be used for any other purpose, including without limitation, unauthorized commercial uses, in vitro diagnostic uses, ex vivo or in vivo therapeutic uses, or any type of consumption by or application to human or animals.

Aromatase Antibody (PA1-21398) in WB

Western Blot analysis of human brain lysate using Aromatase Polyclonal Antibody (Product # PA1-21398).



For Research Use Only. Not for use in diagnostic procedures. Not for resale without express authorization.

Products are warranted to operate or perform substantially in conformance with published Product specifications in effect at the time of sale, as set forth in the Production documentation, specifications and/or accompanying package inserts ("Documentation"). No claim of suitability for use in applications regulated by FDA is made. The warranty provided herein is valid only when used by properly trained individuals. Unless otherwise stated in the Documentation, this warranty is limited to one year from date of shipment when the Product is subjected to normal, proper and intended usage. This warranty does not extend to anyone other than the Buyer. Any model or sample furnished to Buyer is merely illustrative of the general type and quality of goods and does not represent that any Product will conform to such model or sample.

NO OTHER WARRANTIES, EXPRESS OR IMPLIED, ARE GRANTED INCLUDING WITHOUT LIMITATION, IMPLIED WARRANTIES OF MERCHANTABILITY, FITNESS FOR ANY PARTICULAR PURPOSE, OR NON-INFRINGEMENT. BUYER'S EXCLUSIVE REMEDY FOR NON-CONFORMING PRODUCTS DURING THE WARRANTY PERIOD IS LIMITED TO REPAIR, REPLACEMENT OF OR REFUND FOR THE NON-CONFORMING PRODUCT(S) AT SELLER'S SOLE OPTION. THERE IS NO OBLIGATION TO REPAIR, REPLACE OR REFUND FOR PRODUCTS AS THE RESULT OF (i) ACCIDENT, DISASTER OR EVENT OF FORCE MAJEURE, (ii) MISUSE, FAULT OR NEGLIGENCE OF OR BY BUYER, (iii) USE OF THE PRODUCTS IN A MANNER FOR WHICH THEY WERE NOT DESIGNED, OR (iv) IMPROPER STORAGE AND HANDLING OF THE PRODUCTS. Unless otherwise expressly stated on the Product or in the documentation accompanying the Product, the Product is intended for research only and is not to be used for any other purpose, including without limitation, unauthorized commercial uses, in vitro diagnostic uses, ex vivo or in vivo therapeutic uses, or any type of consumption by or application to human or animals.

PubMed References For Aromatase Polyclonal Antibody

6 Western Blot References

| Species / Dilution | Summary |
|----------------------------|--------------------------------------------------------------------------------------------------------------------------------------------------------------------------------------------------------------------------------------------------------------------------------------------------------------------------------------------------------------------------------------------------------------------------------------------------------------------------------------------------------------------------------------------------------------------------------------------------------------------------------------------------------------------------------------------------------------------------------------------------------------------------------------------------|
| | PA1-21398 was used in Western Blotting to determine if changes in insulin sensitivity mediators (increase in inflammation, oxidative stress, and lipotoxicity and/or decrease in adiponectin) and the intracrine steroidal milieu contributes to these metabolic perturbations. |
| Sheep / Not Cited | Reproductive toxicology (Elmsford, N.Y.) (2019; 85: 110) "Developmental programming: Changes in mediators of insulin sensitivity in prenatal bisphenol A-treated female sheep." Author(s):Puttabyatappa M,Martin JD,Andriessen V,Stevenson M,Zeng L,Pennathur S,Padmanabhan V PubMed Article URL: http://dx.doi.org/10.1016/j.reprotox.2019.03.002 |
| Pig / 1:200 | PA1-21398 was used in Western Blot to find that vaspin/GRP78 expression depends on the luteal phase stage and vaspin affects luteal cells endocrinology, indicating that vaspin is a new regulator of luteal cells steroidogenesis and CL formation. The Journal of endocrinology (2020; 247: 283) "The role of vaspin in porcine corpus luteum." Author(s):Kurowska P,Mlyczyska E,Dawid M,Grzesiak M,Dupont J,Rak A PubMed Article URL: http://dx.doi.org/10.1530/JOE-20-0332 |
| Mouse / 1:1000 | PA1-21398 was used in Western Blotting to replicate PCOS via the neonatal treatment of estradiol in mice. Experimental and therapeutic medicine (2019; 17: 3501) "Tanshinone IIA attenuates estradiol-induced polycystic ovarian syndrome in mice by ameliorating FSHR expression in the ovary." Author(s):Jin J,Hu QY,Xu WW,Zhu WJ,Liu B,Liu J,Wang W,Zhou HF PubMed Article URL: http://dx.doi.org/10.3892/etm.2019.7352 |
| Not Applicable / Not Cited | PA1-21398 was used in Western Blotting to show that increased commitment of AT-MSCs to adipocyte lineage and decreased differentiation to adipocytes may underlie the small adipocyte phenotype of prenatal T-treated females. Reproductive sciences (Thousand Oaks, Calif.) (2018; 25: 1010) "Developmental Programming: Impact of Prenatal Testosterone Excess on Steroidal Machinery and Cell Differentiation Markers in Visceral Adipocytes of Female Sheep." Author(s):Puttabyatappa M,Lu C,Martin JD,Chazenbalk G,Dumesic D,Padmanabhan V PubMed Article URL: http://dx.doi.org/10.1177/1933719117746767 |
| Mouse / 1:500 | PA1-21398 was used in Western Blotting to highlight a novel role for the Kisspeptin-10 in the induction of the cytoskeletal-nucleoskeletal route, downstream a physical interaction between KISS1 receptor and ANKRD31, with gene expression activation as final effect, in Leydig cells. Frontiers in cell and developmental biology (2022; 10:) "KISS1R and ANKRD31 Cooperate to Enhance Leydig Cell Gene Expression <i>via</i> the Cytoskeletal-Nucleoskeletal Pathway." Author(s):Ricci G,Guillou F,Catizone A,Mele VG,Moggio M,Chioccarelli T,Diano N,Meccariello R,Pierantoni R,Fasano S,Cobellis G,Chianese R,Manfrevola F PubMed Article URL: http://dx.doi.org/10.3389/fcell.2022.877270 |
| Bovine / 1:1000 | PA1-21398 was used in western blot to study the role of TLR2 and TLR4 in the initiation of inflammation and disturbance of bovine granulosa cell endocrine function by bacterial PAMPs Endocrinology (2013; 154: 3377) "Pathogen-associated molecular patterns initiate inflammation and perturb the endocrine function of bovine granulosa cells from ovarian dominant follicles via TLR2 and TLR4 pathways." Author(s):Price JC,Bromfield JJ,Sheldon IM PubMed Article URL: http://dx.doi.org/10.1210/en.2013-1102 |

2 Immunohistochemistry References

| Species / Dilution | Summary |
|--------------------|--------------------------------------------------------------------------------------------------------------------------------------------------------------------------------------------------------------------------------------------------------------------------------------------------------------------------------------------|
| | PA1-21398 was used in immunohistochemistry to assess the relationship between aromatase expression and the clinical and prognostic features growth hormone secreting adenomas, prolactinomas, and normal pituitary tissues |
| Human / Not Cited | Endocrine (2015; 49: 250) "Aromatase enzyme expression in acromegaly and its possible relationship with disease prognosis." Author(s):Selek A,Cetinarslan B,Gurbuz Y,Tarkun I,Canturk Z,Cabuk B PubMed Article URL: http://dx.doi.org/10.1007/s12020-014-0445-1 |

For Research Use Only. Not for use in diagnostic procedures. Not for resale without express authorization.

Products are warranted to operate or perform substantially in conformance with published Product specifications in effect at the time of sale, as set forth in the Production documentation, specifications and/or accompanying package inserts ("Documentation"). No claim of suitability for use in applications regulated by FDA is made. The warranty provided herein is valid only when used by properly trained individuals. Unless otherwise stated in the Documentation, this warranty is limited to one year from date of shipment when the Product is subjected to normal, proper and intended usage. This warranty does not extend to anyone other than the Buyer. Any model or sample furnished to Buyer is merely illustrative of the general type and quality of goods and does not represent that any Product will conform to such model or sample.

NO OTHER WARRANTIES, EXPRESS OR IMPLIED, ARE GRANTED INCLUDING WITHOUT LIMITATION, IMPLIED WARRANTIES OF MERCHANTABILITY, FITNESS FOR ANY PARTICULAR PURPOSE, OR NON-INFRINGEMENT. BUYER'S EXCLUSIVE REMEDY FOR NON-CONFORMING PRODUCTS DURING THE WARRANTY PERIOD IS LIMITED TO REPAIR, REPLACEMENT OF OR REFUND FOR THE NON-CONFORMING PRODUCT(S) AT SELLER'S SOLE OPTION. THERE IS NO OBLIGATION TO REPAIR, REPLACE OR REFUND FOR PRODUCTS AS THE RESULT OF (i) ACCIDENT, DISASTER OR EVENT OF FORCE MAJEURE, (ii) MISUSE, FAULT OR NEGLIGENCE OF OR BY BUYER, (iii) USE OF THE PRODUCTS IN A MANNER FOR WHICH THEY WERE NOT DESIGNED, OR (iv) IMPROPER STORAGE AND HANDLING OF THE PRODUCTS. Unless otherwise expressly stated on the Product or in the documentation accompanying the Product, the Product is intended for research only and is not to be used for any other purpose, including without limitation, unauthorized commercial uses, in vitro diagnostic uses, ex vivo or in vivo therapeutic uses, or any type of consumption by or application to human or animals.

PA1-21398 was used in Immunohistochemistry to describe aromatase expression in the major tissue compartments of breast malignant tumors.

Acta endocrinologica (Bucharest, Romania : 2005) (2022; 16: 22)

"INSIGHTS ON AROMATASE IMMUNOHISTOCHEMISTRY: VARIATIONS BETWEEN INTRINSIC MOLECULAR SUBTYPES OF BREAST CANCERS."

Author(s):Armasu I,Preda C,Ianole V,Mocanu V,Hristov I,Andriescu EC,Cretu-Silivestru I,Vasiliu I,Dascalu CG,Lupascu CD,Crumpei I,Serban DN,Serban IL,Ciobanu Apostol DG

PubMed Article URL:<http://dx.doi.org/10.4183/aeb.2020.22>

Human / Not Cited

For Research Use Only. Not for use in diagnostic procedures. Not for resale without express authorization.

Products are warranted to operate or perform substantially in conformance with published Product specifications in effect at the time of sale, as set forth in the Production documentation, specifications and/or accompanying package inserts ("Documentation"). No claim of suitability for use in applications regulated by FDA is made. The warranty provided herein is valid only when used by properly trained individuals. Unless otherwise stated in the Documentation, this warranty is limited to one year from date of shipment when the Product is subjected to normal, proper and intended usage. This warranty does not extend to anyone other than the Buyer. Any model or sample furnished to Buyer is merely illustrative of the general type and quality of goods and does not represent that any Product will conform to such model or sample.

NO OTHER WARRANTIES, EXPRESS OR IMPLIED, ARE GRANTED INCLUDING WITHOUT LIMITATION, IMPLIED WARRANTIES OF MERCHANTABILITY, FITNESS FOR ANY PARTICULAR PURPOSE, OR NON-INFRINGEMENT. BUYER'S EXCLUSIVE REMEDY FOR NON-CONFORMING PRODUCTS DURING THE WARRANTY PERIOD IS LIMITED TO REPAIR, REPLACEMENT OF OR REFUND FOR THE NON-CONFORMING PRODUCT(S) AT SELLER'S SOLE OPTION. THERE IS NO OBLIGATION TO REPAIR, REPLACE OR REFUND FOR PRODUCTS AS THE RESULT OF (i) ACCIDENT, DISASTER OR EVENT OF FORCE MAJEURE, (ii) MISUSE, FAULT OR NEGLIGENCE OF OR BY BUYER, (iii) USE OF THE PRODUCTS IN A MANNER FOR WHICH THEY WERE NOT DESIGNED, OR (iv) IMPROPER STORAGE AND HANDLING OF THE PRODUCTS. Unless otherwise expressly stated on the Product or in the documentation accompanying the Product, the Product is intended for research only and is not to be used for any other purpose, including without limitation, unauthorized commercial uses, in vitro diagnostic uses, ex vivo or in vivo therapeutic uses, or any type of consumption by or application to human or animals.