

BRE Polyclonal Antibody

Catalog NumberPA5-22154

Product data sheet

Details		Tested Applications		Dilution *	
Size	100 µL	Immunohistochemistry (Paraffin) (IHC (P)) Western Blot (WB) Immunocytochemistry (ICC/IF)		1:100-1:1,000	
Host/Isotope	Rabbit / IgG			1:500-1:3,000	
Class	Polyclonal			1:100-1:1,000	
Type	Antibody				
Immunogen	Recombinant protein fragment contain a sequence corresponding to a region within amino acids 51 and 229 (Q9NXR7) of BRE				
Conjugate	Unconjugated				
Form	Liquid				
Concentration	1 mg/mL				
Storage Conditions	-20° C, Avoid Freeze/Thaw Cycles				

* Suggested working dilutions are given as a guide only. It is recommended that the user titrate the product for use in their own experiment using appropriate negative and positive controls.

Product specific information

PA5-22154 targets BRE in ICC, IF, IHC (P), and WB applications and shows reactivity with Human and mouse samples. The PA5-22154 immunogen is recombinant protein fragment contain a sequence corresponding to a region within amino acids 51 and 229 (Q9NXR7) of BRE.

Background/Target Information

BRCC45 was initially suggested to be a housekeeping protein that is highly expressed in brain and reproductive organs. Later experiments indicated BRCC45 forms a complex with the breast and ovarian predisposition proteins BRCA1 and BRCA2 as well as RAD51 and BRCC36. This complex has a ubiquitin E3 ligase activity and is thought to enhance cellular survival following DNA damage. BRCC45 has also been suggested to function as a death receptor-associated anti-apoptotic protein by inhibiting the BID-induced activation of the mitochondrial apoptotic pathway. Higher levels of BRCC45 were detected in the majority of hepatocellular carcinomas, suggesting that BRCC45 may promote tumorigenesis when overexpressed. At least three isoforms of BRCC45 are known to exist.

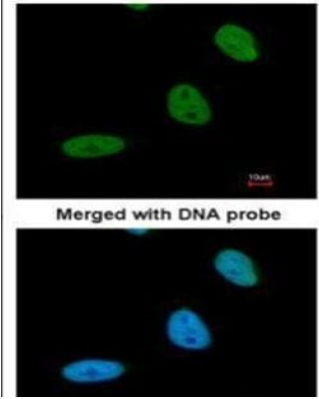
For Research Use Only. Not for use in diagnostic procedures. Not for resale without express authorization.

For Research Use Only. Not for use in diagnostic procedures. Not for resale without express authorization.

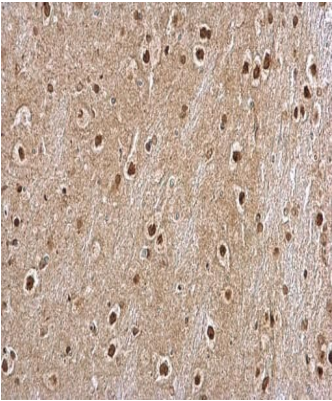
Products are warranted to operate or perform substantially in conformance with published Product specifications in effect at the time of sale, as set forth in the Production documentation, specifications and/or accompanying package inserts ("Documentation"). No claim of suitability for use in applications regulated by FDA is made. The warranty provided herein is valid only when used by properly trained individuals. Unless otherwise stated in the Documentation, this warranty is limited to one year from date of shipment when the Product is subjected to normal, proper and intended usage. This warranty does not extend to anyone other than the Buyer. Any model or sample furnished to Buyer is merely illustrative of the general type and quality of goods and does not represent that any Product will conform to such model or sample.

NO OTHER WARRANTIES, EXPRESS OR IMPLIED, ARE GRANTED INCLUDING WITHOUT LIMITATION, IMPLIED WARRANTIES OF MERCHANTABILITY, FITNESS FOR ANY PARTICULAR PURPOSE, OR NON-INFRINGEMENT. BUYER'S EXCLUSIVE REMEDY FOR NON-CONFORMING PRODUCTS DURING THE WARRANTY PERIOD IS LIMITED TO REPAIR, REPLACEMENT OF OR REFUND FOR THE NON-CONFORMING PRODUCT(S) AT SELLER'S SOLE OPTION. THERE IS NO OBLIGATION TO REPAIR, REPLACE OR REFUND FOR PRODUCTS AS THE RESULT OF (i) ACCIDENT, DISASTER OR EVENT OF FORCE MAJEURE, (ii) MISUSE, FAULT OR NEGLIGENCE OF OR BY BUYER, (iii) USE OF THE PRODUCTS IN A MANNER FOR WHICH THEY WERE NOT DESIGNED, OR (iv) IMPROPER STORAGE AND HANDLING OF THE PRODUCTS. Unless otherwise expressly stated on the Product or in the documentation accompanying the Product, the Product is intended for research only and is not to be used for any other purpose, including without limitation, unauthorized commercial uses, in vitro diagnostic uses, ex vivo or in vivo therapeutic uses, or any type of consumption by or application to human or animals.

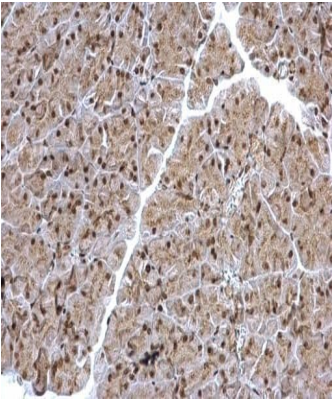
Product Images For BRE Polyclonal Antibody



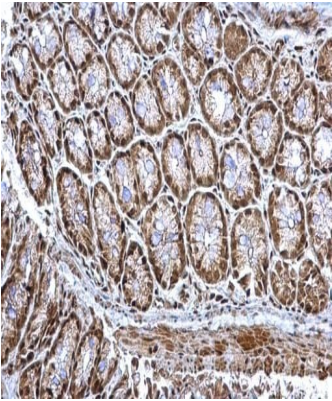
BRE Antibody (PA5-22154) in ICC/IF
Immunofluorescent analysis of BRE in paraformaldehyde-fixed HeLa cells using a BRE polyclonal antibody (Product # PA5-22154) at a 1:200 dilution.



BRE Antibody (PA5-22154) in IHC (P)
Immunohistochemical analysis of BRE in the nucleus and cytosol of paraffin-embedded rat middle brain tissue using a BRE polyclonal antibody (Product # PA5-22154) at a dilution of 1:500.



BRE Antibody (PA5-22154) in IHC (P)
Immunohistochemical analysis of BRE in the nucleus and cytosol of paraffin-embedded mouse pancreas tissue using a BRE polyclonal antibody (Product # PA5-22154) at a dilution of 1:500.

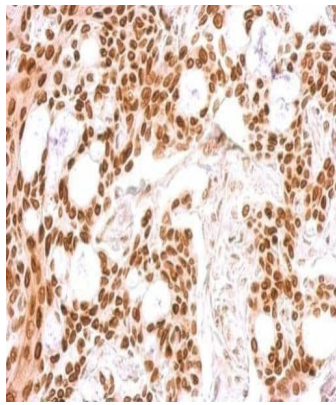


BRE Antibody (PA5-22154) in IHC (P)
Immunohistochemical analysis of BRE in the nucleus and cytosol of paraffin-embedded mouse colon tissue using a BRE polyclonal antibody (Product # PA5-22154) at a dilution of 1:500.

For Research Use Only. Not for use in diagnostic procedures. Not for resale without express authorization.

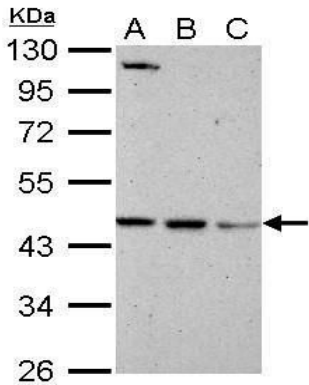
Products are warranted to operate or perform substantially in conformance with published Product specifications in effect at the time of sale, as set forth in the Production documentation, specifications and/or accompanying package inserts ("Documentation"). No claim of suitability for use in applications regulated by FDA is made. The warranty provided herein is valid only when used by properly trained individuals. Unless otherwise stated in the Documentation, this warranty is limited to one year from date of shipment when the Product is subjected to normal, proper and intended usage. This warranty does not extend to anyone other than the Buyer. Any model or sample furnished to Buyer is merely illustrative of the general type and quality of goods and does not represent that any Product will conform to such model or sample.

NO OTHER WARRANTIES, EXPRESS OR IMPLIED, ARE GRANTED INCLUDING WITHOUT LIMITATION, IMPLIED WARRANTIES OF MERCHANTABILITY, FITNESS FOR ANY PARTICULAR PURPOSE, OR NON INFRINGEMENT. BUYER'S EXCLUSIVE REMEDY FOR NON-CONFORMING PRODUCTS DURING THE WARRANTY PERIOD IS LIMITED TO REPAIR, REPLACEMENT OF OR REFUND FOR THE NON-CONFORMING PRODUCT(S) AT SELLER'S SOLE OPTION. THERE IS NO OBLIGATION TO REPAIR, REPLACE OR REFUND FOR PRODUCTS AS THE RESULT OF (i) ACCIDENT, DISASTER OR EVENT OF FORCE MAJEURE, (ii) MISUSE, FAULT OR NEGLIGENCE OF OR BY BUYER, (iii) USE OF THE PRODUCTS IN A MANNER FOR WHICH THEY WERE NOT DESIGNED, OR (iv) IMPROPER STORAGE AND HANDLING OF THE PRODUCTS. Unless otherwise expressly stated on the Product or in the documentation accompanying the Product, the Product is intended for research only and is not to be used for any other purpose, including without limitation, unauthorized commercial uses, in vitro diagnostic uses, ex vivo or in vivo therapeutic uses, or any type of consumption by or application to human or animals.



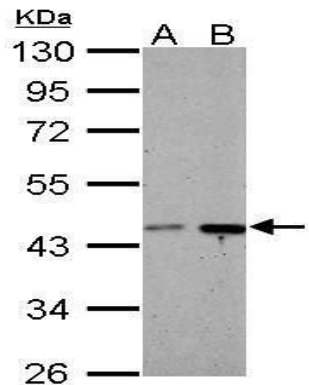
BRE Antibody (PA5-22154) in IHC (P)

Immunohistochemical analysis of BRE in the nucleus of paraffin-embedded Cal27 xenograft using a BRE polyclonal antibody (Product # PA5-22154) at a dilution of 1:500.



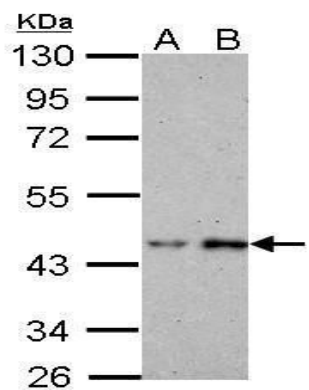
BRE Antibody (PA5-22154) in WB

Western blot analysis of BRE using A) 30 µg Neuro2A whole cell lysate (B) 30 µg GL261 whole cell lysate and C) 30 µg C8D30 whole cell lysate. Samples were loaded onto a 10% SDS-PAGE gel and probed with a BRE polyclonal antibody (Product # PA5-22154) at a dilution of 1:1000.



BRE Antibody (PA5-22154) in WB

Western blot analysis of BRE using A) 30 µg PC-12 whole cell lysate and B) 30 µg Rat2 whole cell lysate. Samples were loaded onto a 10% SDS-PAGE gel and probed with a BRE polyclonal antibody (Product # PA5-22154) at a dilution of 1:1000.



BRE Antibody (PA5-22154) in WB

Western blot analysis of BRE using A) 30 µg A431 whole cell lysate and B) 30 µg HeLa whole cell lysate. Samples were loaded onto a 10% SDS-PAGE gel and probed with a BRE polyclonal antibody (Product # PA5-22154) at a dilution of 1:1000.

For Research Use Only. Not for use in diagnostic procedures. Not for resale without express authorization.

Products are warranted to operate or perform substantially in conformance with published Product specifications in effect at the time of sale, as set forth in the Production documentation, specifications and/or accompanying package inserts ("Documentation"). No claim of suitability for use in applications regulated by FDA is made. The warranty provided herein is valid only when used by properly trained individuals. Unless otherwise stated in the Documentation, this warranty is limited to one year from date of shipment when the Product is subjected to normal, proper and intended usage. This warranty does not extend to anyone other than the Buyer. Any model or sample furnished to Buyer is merely illustrative of the general type and quality of goods and does not represent that any Product will conform to such model or sample.

NO OTHER WARRANTIES, EXPRESS OR IMPLIED, ARE GRANTED INCLUDING WITHOUT LIMITATION, IMPLIED WARRANTIES OF MERCHANTABILITY, FITNESS FOR ANY PARTICULAR PURPOSE, OR NON-INFRINGEMENT. BUYER'S EXCLUSIVE REMEDY FOR NON-CONFORMING PRODUCTS DURING THE WARRANTY PERIOD IS LIMITED TO REPAIR, REPLACEMENT OR REFUND FOR THE NON-CONFORMING PRODUCT(S) AT SELLER'S SOLE OPTION. THERE IS NO OBLIGATION TO REPAIR, REPLACE OR REFUND FOR PRODUCTS AS THE RESULT OF (i) ACCIDENT, DISASTER OR EVENT OF FORCE MAJEURE, (ii) MISUSE, FAULT OR NEGLIGENCE OF OR BY BUYER, (iii) USE OF THE PRODUCTS IN A MANNER FOR WHICH THEY WERE NOT DESIGNED, OR (iv) IMPROPER STORAGE AND HANDLING OF THE PRODUCTS. Unless otherwise expressly stated on the Product or in the documentation accompanying the Product, the Product is intended for research only and is not to be used for any other purpose, including without limitation, unauthorized commercial uses, in vitro diagnostic uses, ex vivo or in vivo therapeutic uses, or any type of consumption by or application to human or animals.