

CD45R Monoclonal Antibody (RA3-6B2), FITC

Catalog NumberRM2601

Product data sheet

Details		Species Reactivity	
Size	1 mL	Species reactivity	Mouse
Host/Isotope	Rat / IgG2a, kappa	Published species	Mouse, Not Applicable
Class	Monoclonal	Tested Applications	
Type	Antibody	Flow Cytometry (Flow)	Dilution * Assay-dependent
Clone	RA3-6B2	Published Applications	
Immunogen	exon A-specific epitope on CD45	Flow Cytometry (Flow)	See 18 publications below
Conjugate	FITC	Miscellaneous PubMed (Misc)	See 25 publications below
Form	Liquid	* Suggested working dilutions are given as a guide only. It is recommended that the user titrate the product for use in their own experiment using appropriate negative and positive controls.	
Storage Conditions	4° C, store in dark		

Background/Target Information

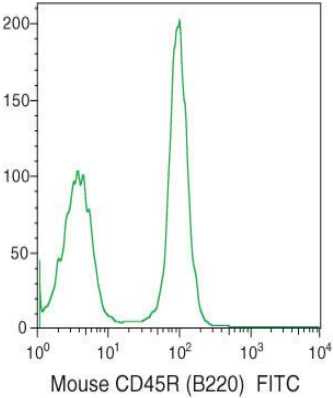
CD45R (PTPRC) is a member of the protein tyrosine phosphatase (PTP) family. PTPs are known to be signaling molecules that regulate a variety of cellular processes including cell growth, differentiation, mitotic cycle, and oncogenic transformation. CD45 contains an extracellular domain, a single transmembrane segment and two tandem intracytoplasmic catalytic domains. CD45 is specifically expressed in hematopoietic cells and has been shown to be an essential regulator of T- and B-cell antigen receptor signaling. CD45 glycoprotein is crucial in lymphocyte development and antigen signaling, serving as an important regulator of Src-family kinases. CD45 protein exists in multiple isoforms as a result of alternative splicing, and these isoforms differ in their extracellular domains, but share identical transmembrane and cytoplasmic domains. Further, these CD45 isoforms differ in their ability to translocate into the glycosphingolipid-enriched membrane domains and their expression depends on cell type and physiological state of the cell. In addition to its role in immunoreceptor signaling, CD45 is important in promoting cell survival by modulating integrin-mediated signal transduction pathway and is also involved in DNA fragmentation during apoptosis. CD45RA is an isoform of the CD45 complex and has restricted expression between different subtypes of lymphoid cells. Diseases associated with CD45 dysfunction include Severe Combined Immunodeficiency (T-cell negative, B-Cell Negative) and Hepatitis C.

For Research Use Only. Not for use in diagnostic procedures. Not for resale without express authorization.

For Research Use Only. Not for use in diagnostic procedures. Not for resale without express authorization.

Products are warranted to operate or perform substantially in conformance with published Product specifications in effect at the time of sale, as set forth in the Production documentation, specifications and/or accompanying package inserts ("Documentation"). No claim of suitability for use in applications regulated by FDA is made. The warranty provided herein is valid only when used by properly trained individuals. Unless otherwise stated in the Documentation, this warranty is limited to one year from date of shipment when the Product is subjected to normal, proper and intended usage. This warranty does not extend to anyone other than the Buyer. Any model or sample furnished to Buyer is merely illustrative of the general type and quality of goods and does not represent that any Product will conform to such model or sample.

NO OTHER WARRANTIES, EXPRESS OR IMPLIED, ARE GRANTED INCLUDING WITHOUT LIMITATION, IMPLIED WARRANTIES OF MERCHANTABILITY, FITNESS FOR ANY PARTICULAR PURPOSE, OR NON-INFRINGEMENT. BUYER'S EXCLUSIVE REMEDY FOR NON-CONFORMING PRODUCTS DURING THE WARRANTY PERIOD IS LIMITED TO REPAIR, REPLACEMENT OF OR REFUND FOR THE NON-CONFORMING PRODUCT(S) AT SELLER'S SOLE OPTION. THERE IS NO OBLIGATION TO REPAIR, REPLACE OR REFUND FOR PRODUCTS AS THE RESULT OF (i) ACCIDENT, DISASTER OR EVENT OF FORCE MAJEURE, (ii) MISUSE, FAULT OR NEGLIGENCE OF OR BY BUYER, (iii) USE OF THE PRODUCTS IN A MANNER FOR WHICH THEY WERE NOT DESIGNED, OR (iv) IMPROPER STORAGE AND HANDLING OF THE PRODUCTS. Unless otherwise expressly stated on the Product or in the documentation accompanying the Product, the Product is intended for research only and is not to be used for any other purpose, including without limitation, unauthorized commercial uses, in vitro diagnostic uses, ex vivo or in vivo therapeutic uses, or any type of consumption by or application to human or animals.



CD45R Antibody (RM2601) in Flow

Fresh mouse splenocytes were stained using FITC of rat anti-mouse CD45R (B220) antibody (clone: RA3-6B2). The negative control profiles represent unstained cells.

For Research Use Only. Not for use in diagnostic procedures. Not for resale without express authorization.

Products are warranted to operate or perform substantially in conformance with published Product specifications in effect at the time of sale, as set forth in the Production documentation, specifications and/or accompanying package inserts ("Documentation"). No claim of suitability for use in applications regulated by FDA is made. The warranty provided herein is valid only when used by properly trained individuals. Unless otherwise stated in the Documentation, this warranty is limited to one year from date of shipment when the Product is subjected to normal, proper and intended usage. This warranty does not extend to anyone other than the Buyer. Any model or sample furnished to Buyer is merely illustrative of the general type and quality of goods and does not represent that any Product will conform to such model or sample.

NO OTHER WARRANTIES, EXPRESS OR IMPLIED, ARE GRANTED INCLUDING WITHOUT LIMITATION, IMPLIED WARRANTIES OF MERCHANTABILITY, FITNESS FOR ANY PARTICULAR PURPOSE, OR NON-INFRINGEMENT. BUYER'S EXCLUSIVE REMEDY FOR NON-CONFORMING PRODUCTS DURING THE WARRANTY PERIOD IS LIMITED TO REPAIR, REPLACEMENT OF OR REFUND FOR THE NON-CONFORMING PRODUCT(S) AT SELLER'S SOLE OPTION. THERE IS NO OBLIGATION TO REPAIR, REPLACE OR REFUND FOR PRODUCTS AS THE RESULT OF (i) ACCIDENT, DISASTER OR EVENT OF FORCE MAJEURE, (ii) MISUSE, FAULT OR NEGLIGENCE OF OR BY BUYER, (iii) USE OF THE PRODUCTS IN A MANNER FOR WHICH THEY WERE NOT DESIGNED, OR (iv) IMPROPER STORAGE AND HANDLING OF THE PRODUCTS. Unless otherwise expressly stated on the Product or in the documentation accompanying the Product, the Product is intended for research only and is not to be used for any other purpose, including without limitation, unauthorized commercial uses, in vitro diagnostic uses, ex vivo or in vivo therapeutic uses, or any type of consumption by or application to human or animals.

PubMed References For CD45R Monoclonal Antibody (RA3-6B2), FITC

18 Flow Cytometry References

Species / Dilution	Summary
Mouse / Not Cited	RM2601 was used in Flow cytometry/Cell sorting to study the contribution of different T cell subsets (T cells and T cells) to white matter injury and consequent behavioural changes.
	Journal of neuroinflammation (2017; 14:) "T cells but not T cells contribute to sepsis-induced white matter injury and motor abnormalities in mice." Author(s):Zhang X,Rocha-Ferreira E,Li T,Vontell R,Jabin D,Hua S,Zhou K,Nazmi A,Albertsson AM,Sobotka K,Ek J, Thornton C,Hagberg H,Mallard C,Leavenworth JW,Zhu C,Wang X PubMed Article URL: http://dx.doi.org/10.1186/s12974-017-1029-9
Not Applicable / Not Cited	RM2601 was used in flow cytometry to characterize dendritic cells in mice infected with Trichuris muris
	Parasitology research (2005; 97: 186) "Dendritic cell expansion occurs in mesenteric lymph nodes of B10.BR mice infected with the murine nematode parasite Trichuris muris." Author(s):Koyama K PubMed Article URL: http://dx.doi.org/10.1007/s00436-005-1427-2
Not Applicable / Not Cited	RM2601 was used in flow cytometry to investigate the role of B cells in Sjogren's syndrome in a mouse model
	Immunology (2007; 122: 73) "B-lymphocyte depletion ameliorates Sjögren's syndrome in Id3 knockout mice." Author(s):Hayakawa I,Tedder TF,Zhuang Y PubMed Article URL: http://dx.doi.org/10.1111/j.1365-2567.2007.02614.x
Not Applicable / Not Cited	RM2601 was used in flow cytometry and immunohistochemistry to investigate if IgE enhances antibody and T-cell responses in IgE receptor CD23 transgenic animals or if CD23's downregulatory effect precludes IgE-mediated enhancement
	Scandinavian journal of immunology (2007; 66: 261) "IgE enhances specific antibody and T-cell responses in mice overexpressing CD23." Author(s):Carlsson F,Hjelm F,Conrad DH,Heyman B PubMed Article URL: http://dx.doi.org/10.1111/j.1365-3083.2007.01953.x
Mouse / 1:1,000	RM2601 was used in Flow cytometry/Cell sorting to show that Toll-like receptor 7 is present on the cell surface of immune cells and that TLR7 responses can be inhibited by an anti-TLR7 antibody.
	Nature communications (2015; 6:) "Targeting cell surface TLR7 for therapeutic intervention in autoimmune diseases." Author(s):Kanno A,Tanimura N,Ishizaki M,Ohko K,Motoi Y,Onji M,Fukui R,Shimozato T,Yamamoto K,Shibata T,Sano S, Sugahara-Tobinai A,Takai T,Ohto U,Shimizu T,Saitoh S,Miyake K PubMed Article URL: http://dx.doi.org/10.1038/ncomms7119
Not Applicable / Not Cited	RM2601 was used in flow cytometry to assess the recovery of functional antiviral immune responses in ganciclovir-treated mice that express viral thymidine kinase
	Human gene therapy (2000; 11: 2473) "Preservation of graft-versus-infection effects after suicide gene therapy for prevention of graft-versus-host disease." Author(s):Cohen JL,Saron MF,Boyer O,Thomas-Vaslin V,Bellier B,Lejeune L,Charlotte F,Klatzmann D PubMed Article URL: http://dx.doi.org/10.1089/10430340050207966
Not Applicable / Not Cited	RM2601 was used in flow cytometry to study the effect of inactivated Parapoxvirus ovis on dendritic cells
	Journal of virology (2009; 83: 9411) "Conventional bone marrow-derived dendritic cells contribute to toll-like receptor-independent production of alpha/beta interferon in response to inactivated parapoxvirus ovis." Author(s):Siegemund S,Hartl A,von Buttlar H,Dautel F,Raue R,Freudenberg MA,Fejer G,Büttner M,Köhler G,Kirschning CJ,Sparwasser T,Alber G PubMed Article URL: http://dx.doi.org/10.1128/JVI.02362-08
Not Applicable / Not Cited	RM2601 was used in flow cytometry and immunohistochemistry - frozen section to determine the effect of anti-CD20 immunotherapy on tissue B cells in vivo
	Journal of immunology (Baltimore, Md. : 1950) (2005; 174: 4389) "The peritoneal cavity provides a protective niche for B1 and conventional B lymphocytes during anti-CD20 immunotherapy in mice." Author(s):Hamaguchi Y,Uchida J,Cain DW,Venturi GM,Poe JC,Haas KM,Tedder TF PubMed Article URL: http://dx.doi.org/10.4049/jimmunol.174.7.4389

For Research Use Only. Not for use in diagnostic procedures. Not for resale without express authorization.

Products are warranted to operate or perform substantially in conformance with published Product specifications in effect at the time of sale, as set forth in the Production documentation, specifications and/or accompanying package inserts ("Documentation"). No claim of suitability for use in applications regulated by FDA is made. The warranty provided herein is valid only when used by properly trained individuals. Unless otherwise stated in the Documentation, this warranty is limited to one year from date of shipment when the Product is subjected to normal, proper and intended usage. This warranty does not extend to anyone other than the Buyer. Any model or sample furnished to Buyer is merely illustrative of the general type and quality of goods and does not represent that any Product will conform to such model or sample.

NO OTHER WARRANTIES, EXPRESS OR IMPLIED, ARE GRANTED INCLUDING WITHOUT LIMITATION, IMPLIED WARRANTIES OF MERCHANTABILITY, FITNESS FOR ANY PARTICULAR PURPOSE, OR NON-INFRINGEMENT. BUYER'S EXCLUSIVE REMEDY FOR NON-CONFORMING PRODUCTS DURING THE WARRANTY PERIOD IS LIMITED TO REPAIR, REPLACEMENT OF OR REFUND FOR THE NON-CONFORMING PRODUCT(S) AT SELLER'S SOLE OPTION. THERE IS NO OBLIGATION TO REPAIR, REPLACE OR REFUND FOR PRODUCTS AS THE RESULT OF (i) ACCIDENT, DISASTER OR EVENT OF FORCE MAJEURE, (ii) MISUSE, FAULT OR NEGLIGENCE OF OR BY BUYER, (iii) USE OF THE PRODUCTS IN A MANNER FOR WHICH THEY WERE NOT DESIGNED, OR (iv) IMPROPER STORAGE AND HANDLING OF THE PRODUCTS. Unless otherwise expressly stated on the Product or in the documentation accompanying the Product, the Product is intended for research only and is not to be used for any other purpose, including without limitation, unauthorized commercial uses, in vitro diagnostic uses, ex vivo or in vivo therapeutic uses, or any type of consumption by or application to human or animals.

	RM2601 was used in flow cytometry to study T cell progenitors in the adult thymus
Not Applicable / Not Cited	Journal of immunology (Baltimore, Md. : 1950) (2005; 175: 5848) "The earliest thymic progenitors in adults are restricted to T, NK, and dendritic cell lineage and have a potential to form more diverse TCRbeta chains than fetal progenitors." Author(s):Lu M,Tayu R,Ikawa T,Masuda K,Matsumoto I,Mugishima H,Kawamoto H,Katsura Y PubMed Article URL: http://dx.doi.org/10.4049/jimmunol.175.9.5848
Not Applicable / Not Cited	RM2601 was used in flow cytometry to study lymphoma in mice driven by Myc cooperating with the KSHV latency locus
Not Applicable / Not Cited	PLoS pathogens (2015; 11:) "KSHV Latency Locus Cooperates with Myc to Drive Lymphoma in Mice." Author(s):Sin SH, Kim Y, Eason A, Dittmer DP PubMed Article URL: http://dx.doi.org/10.1371/journal.ppat.1005135
Not Applicable / Not Cited	RM2601 was used in flow cytometry to demonstrate that the effects of Toll-like receptors on autoimmunity occur in the established repertoire and not during B cell development
Not Applicable / Not Cited	European journal of immunology (2006; 36: 1404) "TLR4, TLR9 and MyD88 are not required for the positive selection of autoreactive B cells into the primary repertoire." Author(s):Silver K, Ferry H, Crockford T, Cornall RJ PubMed Article URL: http://dx.doi.org/10.1002/eji.200636019
Not Applicable / Not Cited	RM2601 was used in flow cytometry to characterize adaptor molecule containing PH and SH2 domains knock out mice
Not Applicable / Not Cited	Molecular and cellular biology (2004; 24: 2243) "Increased numbers of B-1 cells and enhanced responses against TI-2 antigen in mice lacking APS, an adaptor molecule containing PH and SH2 domains." Author(s):Iseki M, Kubo C, Kwon SM, Yamaguchi A, Kataoka Y, Yoshida N, Takatsu K, Takaki S PubMed Article URL: http://dx.doi.org/10.1128/MCB.24.6.2243-2250.2004
Not Applicable / Not Cited	RM2601 was used in flow cytometry to determine the influence of gut ischemia/reperfusion on gut-associated lymphoid tissue mass and function
Not Applicable / Not Cited	Critical care medicine (2006; 34: 182) "Gut ischemia-reperfusion affects gut mucosal immunity: a possible mechanism for infectious complications after severe surgical insults." Author(s):Fukatsu K, Sakamoto S, Hara E, Ueno C, Maeshima Y, Matsumoto I, Mochizuki H, Hiraide H PubMed Article URL: http://dx.doi.org/10.1097/01.ccm.0000196207.86570.16
Mouse / Not Cited	RM2601 was used in Flow cytometry/Cell sorting to show that functional loss of Id3 increases gammadelta T cell production from progenitor cells undergoing TCRbeta rearrangement.
Mouse / Not Cited	Journal of immunology (Baltimore, Md. : 1950) (2009; 182: 5306) "Id3 restricts the developmental potential of gamma delta lineage during thymopoiesis." Author(s):Ueda-Hayakawa I, Mahlios J, Zhuang Y PubMed Article URL: http://dx.doi.org/10.4049/jimmunol.0804249
Mouse / Not Cited	RM2601 was used in Flow cytometry/Cell sorting to study the role of SH2-B in the insulin-like growth factor-mediated reproductive pathway in mice.
Mouse / Not Cited	Molecular and cellular biology (2002; 22: 3066) "SH2-B is required for both male and female reproduction." Author(s):Ohtsuka S, Takaki S, Iseki M, Miyoshi K, Nakagata N, Kataoka Y, Yoshida N, Takatsu K, Yoshimura A PubMed Article URL: http://dx.doi.org/10.1128/MCB.22.9.3066-3077.2002
Not Applicable / Not Cited	RM2601 was used in flow cytometry to identify a role for TRAIL in apoptosis during listeriosis
Not Applicable / Not Cited	Journal of immunology (Baltimore, Md. : 1950) (2004; 173: 5652) "Reduced apoptosis and ameliorated listeriosis in TRAIL-null mice." Author(s):Zheng SJ, Jiang J, Shen H, Chen YH PubMed Article URL: http://dx.doi.org/10.4049/jimmunol.173.9.5652
Not Applicable / Not Cited	RM2601 was used in flow cytometry to use transgenic mice to study the functions of APS in B cell development and activation
Not Applicable / Not Cited	Biochemical and biophysical research communications (2005; 330: 1005) "APS, an adaptor molecule containing PH and SH2 domains, has a negative regulatory role in B cell proliferation." Author(s):Iseki M, Kubo-Akashi C, Kwon SM, Yamaguchi A, Takatsu K, Takaki S PubMed Article URL: http://dx.doi.org/10.1016/j.bbrc.2005.03.073

For Research Use Only. Not for use in diagnostic procedures. Not for resale without express authorization.

Products are warranted to operate or perform substantially in conformance with published Product specifications in effect at the time of sale, as set forth in the Production documentation, specifications and/or accompanying package inserts ("Documentation"). No claim of suitability for use in applications regulated by FDA is made. The warranty provided herein is valid only when used by properly trained individuals. Unless otherwise stated in the Documentation, this warranty is limited to one year from date of shipment when the Product is subjected to normal, proper and intended usage. This warranty does not extend to anyone other than the Buyer. Any model or sample furnished to Buyer is merely illustrative of the general type and quality of goods and does not represent that any Product will conform to such model or sample.

NO OTHER WARRANTIES, EXPRESS OR IMPLIED, ARE GRANTED INCLUDING WITHOUT LIMITATION, IMPLIED WARRANTIES OF MERCHANTABILITY, FITNESS FOR ANY PARTICULAR PURPOSE, OR NON-INFRINGEMENT. BUYER'S EXCLUSIVE REMEDY FOR NON-CONFORMING PRODUCTS DURING THE WARRANTY PERIOD IS LIMITED TO REPAIR, REPLACEMENT OF OR REFUND FOR THE NON-CONFORMING PRODUCT(S) AT SELLER'S SOLE OPTION. THERE IS NO OBLIGATION TO REPAIR, REPLACE OR REFUND FOR PRODUCTS AS THE RESULT OF (i) ACCIDENT, DISASTER OR EVENT OF FORCE MAJEURE, (ii) MISUSE, FAULT OR NEGLIGENCE OF OR BY BUYER, (iii) USE OF THE PRODUCTS IN A MANNER FOR WHICH THEY WERE NOT DESIGNED, OR (iv) IMPROPER STORAGE AND HANDLING OF THE PRODUCTS. Unless otherwise expressly stated on the Product or in the documentation accompanying the Product, the Product is intended for research only and is not to be used for any other purpose, including without limitation, unauthorized commercial uses, in vitro diagnostic uses, ex vivo or in vivo therapeutic uses, or any type of consumption by or application to human or animals.

	RM2601 was used in flow cytometry to test if higher numbers of hematopoietic stem cells correlate with the speed of immune reconstitution in a congenic transplantation mouse model
Not Applicable / Not Cited	<p>Blood (2004; 103: 4344)</p> <p>"Hematopoietic stem cell dose correlates with the speed of immune reconstitution after stem cell transplantation."</p> <p>Author(s):Chen BJ,Cui X,Sempowski GD,Domen J,Chao NJ</p> <p>PubMed Article URL:http://dx.doi.org/10.1182/blood-2003-07-2534</p>
25 Miscellaneous PubMed References	
Species / Dilution	Summary
	RM2601 was used in flow cytometry to assess if progenitors colonizing the thymus are T cell lineage restricted.
Mouse / Not Cited	<p>Journal of immunology (Baltimore, Md. : 1950) (1999; 162: 2725)</p> <p>"Emergence of T cell progenitors without B cell or myeloid differentiation potential at the earliest stage of hematopoiesis in the murine fetal liver."</p> <p>Author(s):Kawamoto H,Ohmura K,Fujimoto S,Katsura Y</p> <p>PubMed Article URL:http://www.ncbi.nlm.nih.gov/pubmed/10072517</p>
Mouse / Not Cited	<p>RM2601 was used in flow cytometry to analyze the cell activation and proliferation requirements for the deletion of viral superantigen-reactive Vbeta8.1 T-cell receptor transgenic thymocytes.</p> <p>Blood (1998; 91: 4248)</p> <p>"Viral superantigen-induced negative selection of TCR transgenic CD4+ CD8+ thymocytes depends on activation, but not proliferation."</p> <p>Author(s):Ferrero I,Anjuère F,Azcoitia I,Renno T,MacDonald HR,Ardavín C</p> <p>PubMed Article URL:http://www.ncbi.nlm.nih.gov/pubmed/9596673</p>
Mouse / Not Cited	<p>RM2601 was used in flow cytometry to characterize different populations of mouse lymph node dendritic cells.</p> <p>Journal of immunology (Baltimore, Md. : 1950) (1998; 160: 708)</p> <p>"Three populations of mouse lymph node dendritic cells with different origins and dynamics."</p> <p>Author(s):Salomon B,Cohen JL,Masurier C,Klatzmann D</p> <p>PubMed Article URL:http://www.ncbi.nlm.nih.gov/pubmed/9551906</p>
Mouse / Not Cited	<p>RM2601 was used in flow cytometry to characterize the differences in dendritic cell generation in vivo caused by non-MHC NOD genes.</p> <p>International immunology (2002; 14: 677)</p> <p>"Cell-intrinsic effects of non-MHC NOD genes on dendritic cell generation in vivo."</p> <p>Author(s):Prasad SJ,Goodnow CC</p> <p>PubMed Article URL:http://dx.doi.org/10.1093/intimm/14/5/677</p>
Mouse / Not Cited	<p>RM2601 was used in flow cytometry to determine the lymphoid or myeloid origin of Langerhans cells.</p> <p>Blood (2000; 96: 1633)</p> <p>"Langerhans cells develop from a lymphoid-committed precursor."</p> <p>Author(s):Anjuère F,del Hoyo GM,Martín P,Ardavín C</p> <p>PubMed Article URL:http://www.ncbi.nlm.nih.gov/pubmed/10961857</p>
Mouse / Not Cited	<p>RM2601 was used in flow cytometry to assess experimental autoimmune encephalomyelitis in mice deficient in IL-6.</p> <p>Journal of immunology (Baltimore, Md. : 1950) (1998; 161: 6480)</p> <p>"IL-6-deficient mice are resistant to experimental autoimmune encephalomyelitis: roles of IL-6 in the activation and differentiation of autoreactive T cells."</p> <p>Author(s):Samoilova EB,Horton JL,Hilliard B,Liu TS,Chen Y</p> <p>PubMed Article URL:http://www.ncbi.nlm.nih.gov/pubmed/9862671</p>
Mouse / Not Cited	<p>RM2601 was used in flow cytometry to report that FcR is a useful marker to isolate the most immature population of murine fetal thymic cells.</p> <p>The Journal of experimental medicine (1996; 184: 1901)</p> <p>"Isolation of the most immature population of murine fetal thymocytes that includes progenitors capable of generating T, B, and myeloid cells."</p> <p>Author(s):Hattori N,Kawamoto H,Katsura Y</p> <p>PubMed Article URL:http://dx.doi.org/10.1084/jem.184.5.1901</p>
Mouse / Not Cited	<p>RM2601 was used in flow cytometry to explore the migration properties of B cells after differentiation in murine peripheral lymph node infected with mouse mammary tumor virus.</p> <p>Journal of immunology (Baltimore, Md. : 1950) (2001; 166: 6266)</p> <p>"Extrafollicular plasmablast B cells play a key role in carrying retroviral infection to peripheral organs."</p> <p>Author(s):Finke D,Baribaud F,Diggelmann H,Acha-Orbea H</p> <p>PubMed Article URL:http://dx.doi.org/10.4049/jimmunol.166.10.6266</p>

For Research Use Only. Not for use in diagnostic procedures. Not for resale without express authorization.

Products are warranted to operate or perform substantially in conformance with published Product specifications in effect at the time of sale, as set forth in the Production documentation, specifications and/or accompanying package inserts ("Documentation"). No claim of suitability for use in applications regulated by FDA is made. The warranty provided herein is valid only when used by properly trained individuals. Unless otherwise stated in the Documentation, this warranty is limited to one year from date of shipment when the Product is subjected to normal, proper and intended usage. This warranty does not extend to anyone other than the Buyer. Any model or sample furnished to Buyer is merely illustrative of the general type and quality of goods and does not represent that any Product will conform to such model or sample.

NO OTHER WARRANTIES, EXPRESS OR IMPLIED, ARE GRANTED INCLUDING WITHOUT LIMITATION, IMPLIED WARRANTIES OF MERCHANTABILITY, FITNESS FOR ANY PARTICULAR PURPOSE, OR NON-INFRINGEMENT. BUYER'S EXCLUSIVE REMEDY FOR NON-CONFORMING PRODUCTS DURING THE WARRANTY PERIOD IS LIMITED TO REPAIR, REPLACEMENT OF OR REFUND FOR THE NON-CONFORMING PRODUCT(S) AT SELLER'S SOLE OPTION. THERE IS NO OBLIGATION TO REPAIR, REPLACE OR REFUND FOR PRODUCTS AS THE RESULT OF (i) ACCIDENT, DISASTER OR EVENT OF FORCE MAJEURE, (ii) MISUSE, FAULT OR NEGLIGENCE OF OR BY BUYER, (iii) USE OF THE PRODUCTS IN A MANNER FOR WHICH THEY WERE NOT DESIGNED, OR (iv) IMPROPER STORAGE AND HANDLING OF THE PRODUCTS. Unless otherwise expressly stated on the Product or in the documentation accompanying the Product, the Product is intended for research only and is not to be used for any other purpose, including without limitation, unauthorized commercial uses, in vitro diagnostic uses, ex vivo or in vivo therapeutic uses, or any type of consumption by or application to human or animals.

	RM2601 was used in flow cytometry to generate and characterize eosinophils from murine embryonic stem cells.
Mouse / Not Cited	British journal of haematology (2004; 124: 819) "Development and functional analysis of eosinophils from murine embryonic stem cells." Author(s):Hamaguchi-Tsuru E,Nobumoto A,Hirose N,Kataoka S,Fujikawa-Adachi K,Furuya M,Tominaga A PubMed Article URL: http://dx.doi.org/10.1111/j.1365-2141.2004.04850.x
	RM2601 was used in flow cytometry to determine the expression of B220 on murine thymocytes after whole-body X-irradiation.
Mouse / Not Cited	The Journal of veterinary medical science (1999; 61: 337) "B220 is expressed on apoptotic thymocytes induced by X-irradiation." Author(s):Oka S,Kubo K,Matsuyama S,Takamori Y PubMed Article URL: http://dx.doi.org/10.1292/jvms.61.337
	RM2601 was used in flow cytometry to examine the origin of double negative T cells using lpr mice.
Mouse / Not Cited	European journal of immunology (1995; 25: 37) "Reduced development of CD4-8-B220+ T cells but normal autoantibody production in lpr/lpr mice lacking major histocompatibility complex class I molecules." Author(s):Ohteki T,Iwamoto M,Izui S,MacDonald HR PubMed Article URL: http://dx.doi.org/10.1002/eji.1830250108
	RM2601 was used in flow cytometry to further characterize mice hemizygous for scurfy.
Mouse / Not Cited	Journal of immunology (Baltimore, Md. : 1950) (1999; 162: 2546) "Cellular and molecular characterization of the scurfy mouse mutant." Author(s):Clark LB,Appleby MW,Brunkow ME,Wilkinson JE,Ziegler SF,Ramsdell F PubMed Article URL: http://www.ncbi.nlm.nih.gov/pubmed/10072494
	RM2601 was used in flow cytometry to test if NKT cells produce IL-4 in response to T. muris infection and induce an Th2 response.
Mouse / Not Cited	Parasite immunology (2003; 24: 527) "NK1.1+ cell depletion in vivo fails to prevent protection against infection with the murine nematode parasite Trichuris muris." Author(s):Koyama K PubMed Article URL: http://dx.doi.org/10.1046/j.1365-3024.2002.00497.x
	RM2601 was used in flow cytometry to report that B7.2 repression is critical to eliminate autoreactive B cells by Fas.
Mouse / Not Cited	The Journal of experimental medicine (1998; 188: 651) "Repression of B7.2 on self-reactive B cells is essential to prevent proliferation and allow Fas-mediated deletion by CD4(+) T cells." Author(s):Rathmell JC,Fournier S,Weintraub BC,Allison JP,Goodnow CC PubMed Article URL: http://dx.doi.org/10.1084/jem.188.4.651
	RM2601 was used in flow cytometry to characterize in vitro-generated dendritic cells.
Mouse / Not Cited	Immunology (1999; 96: 569) "Immunophenotypical and functional heterogeneity of dendritic cells generated from murine bone marrow cultured with different cytokine combinations: implications for anti-tumoral cell therapy." Author(s):Masurier C,Pioche-Durieu C,Colombo BM,Lacave R,Lemoine FM,Klatzmann D,Guigon M PubMed Article URL: http://dx.doi.org/10.1046/j.1365-2567.1999.00728.x
	RM2601 was used in flow cytometry to investigate how humoral tolerance is maintained in the presence of organ-specific membrane antigens.
Mouse / Not Cited	The Journal of experimental medicine (1997; 186: 2005) "Self-reactive B cells are not eliminated or inactivated by autoantigen expressed on thyroid epithelial cells." Author(s):Akkaraju S,Canaan K,Goodnow CC PubMed Article URL: http://dx.doi.org/10.1084/jem.186.12.2005
	RM2601 was used in flow cytometry to assess the proliferative potential of thymic progenitors that are T cell lineage restricted.
Mouse / Not Cited	European journal of immunology (2003; 33: 606) "Extensive proliferation of T cell lineage-restricted progenitors in the thymus: an essential process for clonal expression of diverse T cell receptor beta chains." Author(s):Kawamoto H,Ohmura K,Fujimoto S,Lu M,Ikawa T,Katsura Y PubMed Article URL: http://dx.doi.org/10.1002/eji.200323461

For Research Use Only. Not for use in diagnostic procedures. Not for resale without express authorization.

Products are warranted to operate or perform substantially in conformance with published Product specifications in effect at the time of sale, as set forth in the Production documentation, specifications and/or accompanying package inserts ("Documentation"). No claim of suitability for use in applications regulated by FDA is made. The warranty provided herein is valid only when used by properly trained individuals. Unless otherwise stated in the Documentation, this warranty is limited to one year from date of shipment when the Product is subjected to normal, proper and intended usage. This warranty does not extend to anyone other than the Buyer. Any model or sample furnished to Buyer is merely illustrative of the general type and quality of goods and does not represent that any Product will conform to such model or sample.

NO OTHER WARRANTIES, EXPRESS OR IMPLIED, ARE GRANTED INCLUDING WITHOUT LIMITATION, IMPLIED WARRANTIES OF MERCHANTABILITY, FITNESS FOR ANY PARTICULAR PURPOSE, OR NON-INFRINGEMENT. BUYER'S EXCLUSIVE REMEDY FOR NON-CONFORMING PRODUCTS DURING THE WARRANTY PERIOD IS LIMITED TO REPAIR, REPLACEMENT OF OR REFUND FOR THE NON-CONFORMING PRODUCT(S) AT SELLER'S SOLE OPTION. THERE IS NO OBLIGATION TO REPAIR, REPLACE OR REFUND FOR PRODUCTS AS THE RESULT OF (i) ACCIDENT, DISASTER OR EVENT OF FORCE MAJEURE, (ii) MISUSE, FAULT OR NEGLIGENCE OF OR BY BUYER, (iii) USE OF THE PRODUCTS IN A MANNER FOR WHICH THEY WERE NOT DESIGNED, OR (iv) IMPROPER STORAGE AND HANDLING OF THE PRODUCTS. Unless otherwise expressly stated on the Product or in the documentation accompanying the Product, the Product is intended for research only and is not to be used for any other purpose, including without limitation, unauthorized commercial uses, in vitro diagnostic uses, ex vivo or in vivo therapeutic uses, or any type of consumption by or application to human or animals.

	<p>RM2601 was used in flow cytometry to investigate the aorta-gonad-mesonephros region as a source of hemopoietic progenitors.</p>
Mouse / Not Cited	<p>Journal of immunology (Baltimore, Md. : 1950) (1999; 163: 4788) "Emergence of T, B, and myeloid lineage-committed as well as multipotent hemopoietic progenitors in the aorta-gonad-mesonephros region of day 10 fetuses of the mouse." Author(s):Ohmura K,Kawamoto H,Fujimoto S,Ozaki S,Nakao K,Katsura Y PubMed Article URL:http://www.ncbi.nlm.nih.gov/pubmed/10528178</p>
	<p>RM2601 was used in flow cytometry to explore the role of E2A in T cell lineage.</p>
Mouse / Not Cited	<p>Journal of immunology (Baltimore, Md. : 1950) (2002; 168: 3923) "An analysis of T cell intrinsic roles of E2A by conditional gene disruption in the thymus." Author(s):Pan L,Hanrahan J,Li J,Hale LP,Zhuang Y PubMed Article URL:http://dx.doi.org/10.4049/jimmunol.168.8.3923</p>
	<p>RM2601 was used in flow cytometry to investigate graft-versus-leukemia.</p>
Mouse / Not Cited	<p>Blood (2002; 100: 2020) "Graft-versus-leukemia effect after suicide-gene-mediated control of graft-versus-host disease." Author(s):Litvinova E,Maury S,Boyer O,Bruel S,Benard L,Boisserie G,Klatzmann D,Cohen JL PubMed Article URL:http://dx.doi.org/10.1182/blood-2002-01-0161</p>
	<p>RM2601 was used in flow cytometry to examine multipotent progenitors from early fetuses.</p>
Mouse / Not Cited	<p>Journal of immunology (Baltimore, Md. : 1950) (2001; 166: 3290) "Immature multipotent hemopoietic progenitors lacking long-term bone marrow-reconstituting activity in the aorta-gonad-mesonephros region of murine day 10 fetuses." Author(s):Ohmura K,Kawamoto H,Lu M,Ikawa T,Ozaki S,Nakao K,Katsura Y PubMed Article URL:http://dx.doi.org/10.4049/jimmunol.166.5.3290</p>
	<p>RM2601 was used in flow cytometry to characterize the immune responses of BALB/c mice infected with Ehrlichia muris.</p>
Mouse / Not Cited	<p>Microbiology and immunology (1997; 40: 575) "Impaired antigen specific responses and enhanced polyclonal stimulation in mice infected with Ehrlichia muris." Author(s):Kawahara M,Suto C,Shibata S,Futohashi M,Rikihisa Y PubMed Article URL:http://dx.doi.org/10.1111/j.1348-0421.1996.tb01111.x</p>
	<p>RM2601 was used in flow cytometry to test if B220 contributes to apoptosis of immature T cells.</p>
Mouse / Not Cited	<p>Immunology (2000; 100: 417) "Presence of B220 within thymocytes and its expression on the cell surface during apoptosis." Author(s):Oka S,Mori N,Matsuyama S,Takamori Y,Kubo K PubMed Article URL:http://dx.doi.org/10.1046/j.1365-2567.2000.00063.x</p>
	<p>RM2601 was used in flow cytometry to describe the cells that transfer adoptive murine experimental hypersensitivity pneumonitis.</p>
Mouse / Not Cited	<p>The American review of respiratory disease (1992; 146: 1582) "CD3+ and CD4+ cells adoptively transfer experimental hypersensitivity pneumonitis." Author(s):Schuyler M,Gott K,Shopp G,Crooks L PubMed Article URL:http://dx.doi.org/10.1164/ajrccm/146.6.1582</p>
	<p>RM2601 was used in flow cytometry to assess the contribution of DC function in non-obese diabetic mice.</p>
Mouse / Not Cited	<p>Clinical and experimental immunology (2003; 134: 388) "Passive transfer of flt-3L-derived dendritic cells delays diabetes development in NOD mice and associates with early production of interleukin (IL)-4 and IL-10 in the spleen of recipient mice." Author(s):Morin J,Faideau B,Gagnerault MC,Lepault F,Boitard C,Boudaly S PubMed Article URL:http://dx.doi.org/10.1111/j.1365-2249.2003.02308.x</p>

For Research Use Only. Not for use in diagnostic procedures. Not for resale without express authorization.

Products are warranted to operate or perform substantially in conformance with published Product specifications in effect at the time of sale, as set forth in the Production documentation, specifications and/or accompanying package inserts ("Documentation"). No claim of suitability for use in applications regulated by FDA is made. The warranty provided herein is valid only when used by properly trained individuals. Unless otherwise stated in the Documentation, this warranty is limited to one year from date of shipment when the Product is subjected to normal, proper and intended usage. This warranty does not extend to anyone other than the Buyer. Any model or sample furnished to Buyer is merely illustrative of the general type and quality of goods and does not represent that any Product will conform to such model or sample.

NO OTHER WARRANTIES, EXPRESS OR IMPLIED, ARE GRANTED INCLUDING WITHOUT LIMITATION, IMPLIED WARRANTIES OF MERCHANTABILITY, FITNESS FOR ANY PARTICULAR PURPOSE, OR NON-INFRINGEMENT. BUYER'S EXCLUSIVE REMEDY FOR NON-CONFORMING PRODUCTS DURING THE WARRANTY PERIOD IS LIMITED TO REPAIR, REPLACEMENT OF OR REFUND FOR THE NON-CONFORMING PRODUCT(S) AT SELLER'S SOLE OPTION. THERE IS NO OBLIGATION TO REPAIR, REPLACE OR REFUND FOR PRODUCTS AS THE RESULT OF (i) ACCIDENT, DISASTER OR EVENT OF FORCE MAJEURE, (ii) MISUSE, FAULT OR NEGLIGENCE OF OR BY BUYER, (iii) USE OF THE PRODUCTS IN A MANNER FOR WHICH THEY WERE NOT DESIGNED, OR (iv) IMPROPER STORAGE AND HANDLING OF THE PRODUCTS. Unless otherwise expressly stated on the Product or in the documentation accompanying the Product, the Product is intended for research only and is not to be used for any other purpose, including without limitation, unauthorized commercial uses, in vitro diagnostic uses, ex vivo or in vivo therapeutic uses, or any type of consumption by or application to human or animals.