

CD55 Monoclonal Antibody (143-30), FITC, eBioscience™

Catalog Number 11-0559-41

Product data sheet

Details		Species Reactivity	
Size	25 Tests	Species reactivity	Human
Host/Isotope	Mouse / IgG1, kappa	Published species	Human, Not Applicable
Class	Monoclonal	Tested Applications	
Type	Antibody	Dilution *	
Clone	143-30	Flow Cytometry (Flow)	5 µL (0.5 µg)/test
Conjugate	FITC	* Suggested working dilutions are given as a guide only. It is recommended that the user titrate the product for use in their own experiment using appropriate negative and positive controls.	
Form	Liquid		
Concentration	5 µL/Test		
Storage Conditions	4° C, store in dark, DO NOT FREEZE!		

Product specific information

Description: The 143-30 monoclonal antibody reacts with human CD55, the 64-73 kDa molecule also known as DAF (Decay-Accelerating Factor). CD55 is a GPI-anchored single chain glycoprotein expressed on all cells in contact with serum including all hematopoietic cells and vascular endothelium; a soluble form of CD55 is also present in plasma and body fluids. CD55 is thought to play a role in the protection of cells from the damage by autologous complement via prevention of the amplification steps of the complement cascade. Antibodies against CD55 are mitogenic in the presence of phorbol esters. Applications Reported: The 143-30 antibody has been reported for use in flow cytometric analysis. Applications Tested: This 143-30 antibody has been pre-titrated and tested by flow cytometric analysis of normal human peripheral blood cells. This can be used at 5 µL (0.5 µg) per test. A test is defined as the amount (µg) of antibody that will stain a cell sample in a final volume of 100 µL. Cell number should be determined empirically but can range from 10⁴ to 10⁸ cells/test. Excitation: 488 nm; Emission: 520 nm; Laser: Blue Laser. Filtration: 0.2 µm post-manufacturing filtered.

Background/Target Information

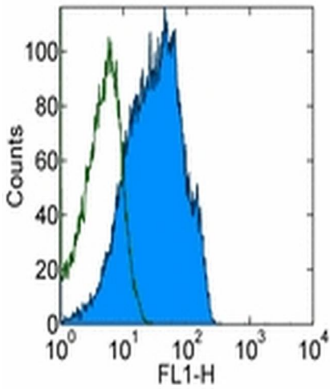
CD55 (decay-accelerating factor, DAF) is a GPI-anchored membrane glycoprotein that protects autologous cells from classical and alternative pathway of complement cascade. Bidirectional interactions between CD55 and CD97 are involved in T cell regulation and CD55 can regulate complement when bound to CD97. In tumors, CD55 promotes neoangiogenesis, tumorigenesis, invasiveness and evasion of apoptosis. CD55 is a 70 kDa glycoprotein (in erythrocytes) anchored in the membrane by glycosylphosphatidylinositol tail. In other cells, the apparent molecular weight is somewhat larger for CD55 and has a substantial content of O-glycans. CD55 binds to activated C4b or C3b complement fragments on the cell surface, preventing the assembly and accelerating the decay of both classical and alternative pathways. CD55 carries the Cromer related blood group antigens. Two alternatively spliced transcripts encoding CD55 have been identified, and the predominant transcript encodes a membrane-bound protein expressed on cells exposed to plasma component proteins but an alternatively spliced transcript produces a soluble protein present at much lower levels. CD55 has been studied to have a role in prostate cancer growth and survival.

For Research Use Only. Not for use in diagnostic procedures. Not for resale without express authorization.

For Research Use Only. Not for use in diagnostic procedures. Not for resale without express authorization.

Products are warranted to operate or perform substantially in conformance with published Product specifications in effect at the time of sale, as set forth in the Production documentation, specifications and/or accompanying package inserts ("Documentation"). No claim of suitability for use in applications regulated by FDA is made. The warranty provided herein is valid only when used by properly trained individuals. Unless otherwise stated in the Documentation, this warranty is limited to one year from date of shipment when the Product is subjected to normal, proper and intended usage. This warranty does not extend to anyone other than the Buyer. Any model or sample furnished to Buyer is merely illustrative of the general type and quality of goods and does not represent that any Product will conform to such model or sample.

NO OTHER WARRANTIES, EXPRESS OR IMPLIED, ARE GRANTED INCLUDING WITHOUT LIMITATION, IMPLIED WARRANTIES OF MERCHANTABILITY, FITNESS FOR ANY PARTICULAR PURPOSE, OR NON-INFRINGEMENT. BUYER'S EXCLUSIVE REMEDY FOR NON-CONFORMING PRODUCTS DURING THE WARRANTY PERIOD IS LIMITED TO REPAIR, REPLACEMENT OF OR REFUND FOR THE NON-CONFORMING PRODUCT(S) AT SELLER'S SOLE OPTION. THERE IS NO OBLIGATION TO REPAIR, REPLACE OR REFUND FOR PRODUCTS AS THE RESULT OF (I) ACCIDENT, DISASTER OR EVENT OF FORCE MAJEURE, (II) MISUSE, FAULT OR NEGLIGENCE OF OR BY BUYER, (III) USE OF THE PRODUCTS IN A MANNER FOR WHICH THEY WERE NOT DESIGNED, OR (IV) IMPROPER STORAGE AND HANDLING OF THE PRODUCTS. Unless otherwise expressly stated on the Product or in the documentation accompanying the Product, the Product is intended for research only and is not to be used for any other purpose, including without limitation, unauthorized commercial uses, in vitro diagnostic uses, ex vivo or in vivo therapeutic uses, or any type of consumption by or application to human or animals.



CD55 Antibody (11-0559-41) in Flow

Staining of normal human peripheral blood cells with Mouse IgG1 K Isotype Control FITC (Product # 11-4714-42) (open histogram) or FITC Anti-Human CD55 FITC (filled histogram). Total viable cells were used for analysis.

For Research Use Only. Not for use in diagnostic procedures. Not for resale without express authorization.

Products are warranted to operate or perform substantially in conformance with published Product specifications in effect at the time of sale, as set forth in the Production documentation, specifications and/or accompanying package inserts ("Documentation"). No claim of suitability for use in applications regulated by FDA is made. The warranty provided herein is valid only when used by properly trained individuals. Unless otherwise stated in the Documentation, this warranty is limited to one year from date of shipment when the Product is subjected to normal, proper and intended usage. This warranty does not extend to anyone other than the Buyer. Any model or sample furnished to Buyer is merely illustrative of the general type and quality of goods and does not represent that any Product will conform to such model or sample.

NO OTHER WARRANTIES, EXPRESS OR IMPLIED, ARE GRANTED INCLUDING WITHOUT LIMITATION, IMPLIED WARRANTIES OF MERCHANTABILITY, FITNESS FOR ANY PARTICULAR PURPOSE, OR NON-INFRINGEMENT. BUYER'S EXCLUSIVE REMEDY FOR NON-CONFORMING PRODUCTS DURING THE WARRANTY PERIOD IS LIMITED TO REPAIR, REPLACEMENT OF OR REFUND FOR THE NON-CONFORMING PRODUCT(S) AT SELLER'S SOLE OPTION. THERE IS NO OBLIGATION TO REPAIR, REPLACE OR REFUND FOR PRODUCTS AS THE RESULT OF (I) ACCIDENT, DISASTER OR EVENT OF FORCE MAJEURE, (II) MISUSE, FAULT OR NEGLIGENCE OF OR BY BUYER, (III) USE OF THE PRODUCTS IN A MANNER FOR WHICH THEY WERE NOT DESIGNED, OR (IV) IMPROPER STORAGE AND HANDLING OF THE PRODUCTS. Unless otherwise expressly stated on the Product or in the documentation accompanying the Product, the Product is intended for research only and is not to be used for any other purpose, including without limitation, unauthorized commercial uses, in vitro diagnostic uses, ex vivo or in vivo therapeutic uses, or any type of consumption by or application to human or animals.