

CD62L Monoclonal Antibody (MEL-14), PE

Catalog NumberA16338

Product data sheet

Details		Species Reactivity	
Size	50 µg	Species reactivity	Mouse
Host/Isotope	Rat / IgG2a, kappa	Published species	Mouse, Not Applicable
Class	Monoclonal	Tested Applications	
Type	Antibody	Flow Cytometry (Flow)	Dilution *Assay-dependent
Clone	MEL-14	Published Applications	
Immunogen	C3H/eb mouse B-cell lymphoma, 38C13.	Flow Cytometry (Flow)	See 7 publications below
Conjugate	PE	Miscellaneous PubMed (Misc)	See 12 publications below
Form	Liquid	* Suggested working dilutions are given as a guide only. It is recommended that the user titrate the product for use in their own experiment using appropriate negative and positive controls.	
Concentration	0.2 mg/mL		
Storage Conditions	4° C		

Background/Target Information

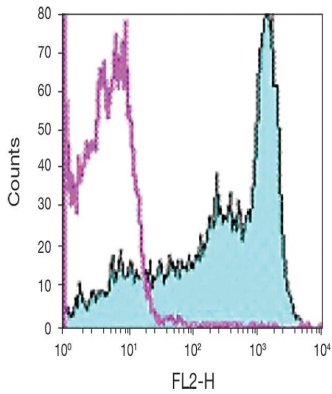
The human CD62L is a 74-95 kDa glycoprotein member of the selectin family of adhesion receptors. L-Selectin is comprised of an aminoterminal C-type lectin binding domain, an epidermal growth factor-like domain, two short consensus repeat (SCR) sequences homologous to those found in complement binding proteins, a short spacer region, a transmembrane region and a short cytoplasmic region. Human CD62L (L-Selectin) is constitutively expressed on all classes of leukocytes including lymphocytes (except a substantial population of memory T cells), monocytes and polymorphonuclear cells.

For Research Use Only. Not for use in diagnostic procedures. Not for resale without express authorization.

For Research Use Only. Not for use in diagnostic procedures. Not for resale without express authorization.

Products are warranted to operate or perform substantially in conformance with published Product specifications in effect at the time of sale, as set forth in the Production documentation, specifications and/or accompanying package inserts ("Documentation"). No claim of suitability for use in applications regulated by FDA is made. The warranty provided herein is valid only when used by properly trained individuals. Unless otherwise stated in the Documentation, this warranty is limited to one year from date of shipment when the Product is subjected to normal, proper and intended usage. This warranty does not extend to anyone other than the Buyer. Any model or sample furnished to Buyer is merely illustrative of the general type and quality of goods and does not represent that any Product will conform to such model or sample.

NO OTHER WARRANTIES, EXPRESS OR IMPLIED, ARE GRANTED INCLUDING WITHOUT LIMITATION, IMPLIED WARRANTIES OF MERCHANTABILITY, FITNESS FOR ANY PARTICULAR PURPOSE, OR NON INFRINGEMENT. BUYER'S EXCLUSIVE REMEDY FOR NON-CONFORMING PRODUCTS DURING THE WARRANTY PERIOD IS LIMITED TO REPAIR, REPLACEMENT OF OR REFUND FOR THE NON-CONFORMING PRODUCT(S) AT SELLER'S SOLE OPTION. THERE IS NO OBLIGATION TO REPAIR, REPLACE OR REFUND FOR PRODUCTS AS THE RESULT OF (i) ACCIDENT, DISASTER OR EVENT OF FORCE MAJEURE, (ii) MISUSE, FAULT OR NEGLIGENCE OF OR BY BUYER, (iii) USE OF THE PRODUCTS IN A MANNER FOR WHICH THEY WERE NOT DESIGNED, OR (iv) IMPROPER STORAGE AND HANDLING OF THE PRODUCTS. Unless otherwise expressly stated on the Product or in the documentation accompanying the Product, the Product is intended for research only and is not to be used for any other purpose, including without limitation, unauthorized commercial uses, in vitro diagnostic uses, ex vivo or in vivo therapeutic uses, or any type of consumption by or application to human or animals.



CD62L Antibody (A16338) in Flow
Staining of BALB/c splenocytes with 0.06 µg of Rat IgG2a Isotype Control PE (open histogram) or 0.06 µg of Anti-Mouse CD62L (L-Selectin) PE (filled histogram, A16338). Total viable cells were used for analysis.

For Research Use Only. Not for use in diagnostic procedures. Not for resale without express authorization.

Products are warranted to operate or perform substantially in conformance with published Product specifications in effect at the time of sale, as set forth in the Production documentation, specifications and/or accompanying package inserts ("Documentation"). No claim of suitability for use in applications regulated by FDA is made. The warranty provided herein is valid only when used by properly trained individuals. Unless otherwise stated in the Documentation, this warranty is limited to one year from date of shipment when the Product is subjected to normal, proper and intended usage. This warranty does not extend to anyone other than the Buyer. Any model or sample furnished to Buyer is merely illustrative of the general type and quality of goods and does not represent that any Product will conform to such model or sample.

NO OTHER WARRANTIES, EXPRESS OR IMPLIED, ARE GRANTED INCLUDING WITHOUT LIMITATION, IMPLIED WARRANTIES OF MERCHANTABILITY, FITNESS FOR ANY PARTICULAR PURPOSE, OR NON-INFRINGEMENT. BUYER'S EXCLUSIVE REMEDY FOR NON-CONFORMING PRODUCTS DURING THE WARRANTY PERIOD IS LIMITED TO REPAIR, REPLACEMENT OF OR REFUND FOR THE NON-CONFORMING PRODUCT(S) AT SELLER'S SOLE OPTION. THERE IS NO OBLIGATION TO REPAIR, REPLACE OR REFUND FOR PRODUCTS AS THE RESULT OF (i) ACCIDENT, DISASTER OR EVENT OF FORCE MAJEURE, (ii) MISUSE, FAULT OR NEGLIGENCE OF OR BY BUYER, (iii) USE OF THE PRODUCTS IN A MANNER FOR WHICH THEY WERE NOT DESIGNED, OR (iv) IMPROPER STORAGE AND HANDLING OF THE PRODUCTS. Unless otherwise expressly stated on the Product or in the documentation accompanying the Product, the Product is intended for research only and is not to be used for any other purpose, including without limitation, unauthorized commercial uses, in vitro diagnostic uses, ex vivo or in vivo therapeutic uses, or any type of consumption by or application to human or animals.

PubMed References For CD62L Monoclonal Antibody (MEL-14), PE

7 Flow Cytometry References

Species / Dilution	Summary
	A16338 was used in flow cytometry to characterize transgenic mice that express the high and low molecular weight CD45 isoforms
Not Applicable / Not Cited	International immunology (2004; 16: 1323) "Altered CD45 isoform expression affects lymphocyte function in CD45 Tg mice." Author(s):Tchilian EZ,Dawes R,Hyland L,Montoya M,Le Bon A,Borrow P,Hou S,Tough D,Beverley PC PubMed Article URL: http://dx.doi.org/10.1093/intimm/dxh135
	A16338 was used in flow cytometry to elucidate the role of AUF1 in the immune system
Not Applicable / Not Cited	BMC immunology (2010; 11:) "AUF1 is involved in splenic follicular B cell maintenance." Author(s):Sadri N,Lu JY,Badura ML,Schneider RJ PubMed Article URL: http://dx.doi.org/10.1186/1471-2172-11-1
	A16338 was used in flow cytometry to assess how FTY720-treatment affects T cell populations
Not Applicable / Not Cited	International immunopharmacology (2006; 6: 1902) "FTY720 preferentially depletes naive T cells from peripheral and lymphoid organs." Author(s):Hofmann M,Brinkmann V,Zerwes HG PubMed Article URL: http://dx.doi.org/10.1016/j.intimp.2006.07.030
	A16338 was used in flow cytometry to discuss the development and functions of effector and memory Foxp3+ T cells
Not Applicable / Not Cited	Journal of immunology (Baltimore, Md. : 1950) (2007; 178: 6901) "Distinct subsets of FoxP3+ regulatory T cells participate in the control of immune responses." Author(s):Stephens GL,Andersson J,Shevach EM PubMed Article URL: http://dx.doi.org/10.4049/jimmunol.178.11.6901
	A16338 was used in flow cytometry to study mycobacterial dissemination and immune-cell trafficking in tuberculosis
Not Applicable / Not Cited	The Journal of infectious diseases (2004; 190: 2137) "Mycobacterial dissemination and cellular responses after 1-lobe restricted tuberculosis infection of genetically susceptible and resistant mice." Author(s):Mischenko VV,Kapina MA,Eruslanov EB,Kondratieva EV,Lyadova IV,Young DB,Apt AS PubMed Article URL: http://dx.doi.org/10.1086/425909
	A16338 was used in flow cytometry to report that Ly49D engagement on T cells leads to T cell activation and TCR-independent effector functions of CD8 T cells
Not Applicable / Not Cited	Journal of immunology (Baltimore, Md. : 1950) (2009; 182: 183) "Ly49D engagement on T lymphocytes induces TCR-independent activation and CD8 effector functions that control tumor growth." Author(s):Merck E,Voyle RB,MacDonald HR PubMed Article URL: http://dx.doi.org/10.4049/jimmunol.182.1.183
	A16338 was used in flow cytometry to demonstrate that software designed for transcriptomics applications can be used in multiparameter flow cytometry
Not Applicable / Not Cited	Cytometry. Part A : the journal of the International Society for Analytical Cytology (2006; 69: 533) "Identification of organ-specific T cell populations by analysis of multiparameter flow cytometry data using DNA-chip analysis software." Author(s):Hofmann M,Zerwes HG PubMed Article URL: http://dx.doi.org/10.1002/cyto.a.20278

12 Miscellaneous PubMed References

Species / Dilution	Summary
	A16338 was used in flow cytometry to report that the lymphoid environment limits T cell proliferation in response to high superantigen levels.
Mouse / Not Cited	European journal of immunology (2001; 31: 884) "Lymphoid environment limits superantigen and antigen-induced T cell proliferation at high precursor frequency." Author(s):Attinger A,MacDonald HR,Acha-Orbea H PubMed Article URL: <a href="http://dx.doi.org/10.1002/1521-4141(200103)31:3<884::aid-immu884>3.0.co;2-m">http://dx.doi.org/10.1002/1521-4141(200103)31:3<884::aid-immu884>3.0.co;2-m

For Research Use Only. Not for use in diagnostic procedures. Not for resale without express authorization.

Products are warranted to operate or perform substantially in conformance with published Product specifications in effect at the time of sale, as set forth in the Production documentation, specifications and/or accompanying package inserts ("Documentation"). No claim of suitability for use in applications regulated by FDA is made. The warranty provided herein is valid only when used by properly trained individuals. Unless otherwise stated in the Documentation, this warranty is limited to one year from date of shipment when the Product is subjected to normal, proper and intended usage. This warranty does not extend to anyone other than the Buyer. Any model or sample furnished to Buyer is merely illustrative of the general type and quality of goods and does not represent that any Product will conform to such model or sample.

NO OTHER WARRANTIES, EXPRESS OR IMPLIED, ARE GRANTED INCLUDING WITHOUT LIMITATION, IMPLIED WARRANTIES OF MERCHANTABILITY, FITNESS FOR ANY PARTICULAR PURPOSE, OR NON-INFRINGEMENT. BUYER'S EXCLUSIVE REMEDY FOR NON-CONFORMING PRODUCTS DURING THE WARRANTY PERIOD IS LIMITED TO REPAIR, REPLACEMENT OF OR REFUND FOR THE NON-CONFORMING PRODUCT(S) AT SELLER'S SOLE OPTION. THERE IS NO OBLIGATION TO REPAIR, REPLACE OR REFUND FOR PRODUCTS AS THE RESULT OF (i) ACCIDENT, DISASTER OR EVENT OF FORCE MAJEURE, (ii) MISUSE, FAULT OR NEGLIGENCE OF OR BY BUYER, (iii) USE OF THE PRODUCTS IN A MANNER FOR WHICH THEY WERE NOT DESIGNED, OR (iv) IMPROPER STORAGE AND HANDLING OF THE PRODUCTS. Unless otherwise expressly stated on the Product or in the documentation accompanying the Product, the Product is intended for research only and is not to be used for any other purpose, including without limitation, unauthorized commercial uses, in vitro diagnostic uses, ex vivo or in vivo therapeutic uses, or any type of consumption by or application to human or animals.

	A16338 was used in flow cytometry to investigate how antigen exposure affects T cell proliferation and cell death.
Mouse / Not Cited	Journal of immunology (Baltimore, Md. : 1950) (2000; 165: 5017) "Two distinct stages in the transition from naive CD4 T cells to effectors, early antigen-dependent and late cytokine-driven expansion and differentiation." Author(s):Jelley-Gibbs DM,Lepak NM,Yen M,Swain SL PubMed Article URL: http://dx.doi.org/10.4049/jimmunol.165.9.5017
	A16338 was used in flow cytometry to examine interactions between alloreactive CD4 and CD8 T cells in mixed lymphocyte reactions and in the graft-versus-host reaction.
Mouse / Not Cited	Immunology (2003; 109: 476) "CD8+ immunoregulatory cells in the graft-versus-host reaction: CD8 T cells activate dendritic cells to secrete interleukin-12/interleukin-18 and induce T helper 1 autoantibody." Author(s):Noble A,Leggat JA,Inderberg EM PubMed Article URL: http://dx.doi.org/10.1046/j.1365-2567.2003.01687.x
	A16338 was used in flow cytometry to identify cellular mechanisms that contribute to susceptibility/resistance to tuberculosis.
Mouse / Not Cited	Clinical and experimental immunology (2004; 135: 19) "Lung cell responses to M. tuberculosis in genetically susceptible and resistant mice following intratracheal challenge." Author(s):Eruslanov EB,Majorov KB,Orlova MO,Mischenko VV,Kondratieva TK,Apt AS,Lyadova IV PubMed Article URL: http://dx.doi.org/10.1111/j.1365-2249.2004.02328.x
	A16338 was used in flow cytometry to identify two types of NKT cells based on their reactivity to CD1d.
Mouse / Not Cited	Journal of immunology (Baltimore, Md. : 1950) (1999; 162: 6410) "Tissue-specific segregation of CD1d-dependent and CD1d-independent NK T cells." Author(s):Eberl G,Lees R,Smiley ST,Taniguchi M,Grusby MJ,MacDonald HR PubMed Article URL: http://www.ncbi.nlm.nih.gov/pubmed/10352254
	A16338 was used in flow cytometry to study the contribution of BAFF to apoptosis and differentiation in B cells.
Mouse / Not Cited	European journal of immunology (2004; 34: 509) "The anti-apoptotic factor Bcl-2 can functionally substitute for the B cell survival but not for the marginal zone B cell differentiation activity of BAFF." Author(s):Tardivel A,Tinel A,Lens S,Steiner QG,Sauberli E,Wilson A,Mackay F,Rolink AG,Beermann F,Tschopp J, Schneider P PubMed Article URL: http://dx.doi.org/10.1002/eji.200324692
	A16338 was used in flow cytometry to report a specialized B helper and tissue inflammatory CD4(+) T cell subset.
Mouse / Not Cited	Nature immunology (2001; 2: 876) "Separable effector T cell populations specialized for B cell help or tissue inflammation." Author(s):Campbell DJ,Kim CH,Butcher EC PubMed Article URL: http://dx.doi.org/10.1038/ni0901-876
	A16338 was used in flow cytometry to identify the initial source of IL-4 in early immune responses.
Mouse / Not Cited	International immunology (1998; 10: 1017) "Induction of Th2 cell differentiation in the primary immune response: dendritic cells isolated from adherent cell culture treated with IL-10 prime naive CD4+ T cells to secrete IL-4." Author(s):Liu L,Rich BE,Inobe J,Chen W,Weiner HL PubMed Article URL: http://dx.doi.org/10.1093/intimm/10.8.1017
	A16338 was used in flow cytometry to study loss of CD8+ cells in IL-15Ralpha(-/-) mice.
Mouse / Not Cited	Journal of immunology (Baltimore, Md. : 1950) (2002; 168: 705) "Reduced expression of Bcl-2 in CD8+ T cells deficient in the IL-15 receptor alpha-chain." Author(s):Wu TS,Lee JM,Lai YG,Hsu JC,Tsai CY,Lee YH,Liao NS PubMed Article URL: http://dx.doi.org/10.4049/jimmunol.168.2.705
	A16338 was used in flow cytometry to characterize a new mouse model of rheumatoid arthritis.
Mouse / Not Cited	International immunology (2004; 16: 455) "The point mutation of tyrosine 759 of the IL-6 family cytokine receptor gp130 synergizes with HTLV-1 pX in promoting rheumatoid arthritis-like arthritis." Author(s):Ishihara K,Sawa S,Ikushima H,Hirota S,Atsumi T,Kamimura D,Park SJ,Murakami M,Kitamura Y,Iwakura Y, Hirano T PubMed Article URL: http://dx.doi.org/10.1093/intimm/dxh045

For Research Use Only. Not for use in diagnostic procedures. Not for resale without express authorization.

Products are warranted to operate or perform substantially in conformance with published Product specifications in effect at the time of sale, as set forth in the Production documentation, specifications and/or accompanying package inserts ("Documentation"). No claim of suitability for use in applications regulated by FDA is made. The warranty provided herein is valid only when used by properly trained individuals. Unless otherwise stated in the Documentation, this warranty is limited to one year from date of shipment when the Product is subjected to normal, proper and intended usage. This warranty does not extend to anyone other than the Buyer. Any model or sample furnished to Buyer is merely illustrative of the general type and quality of goods and does not represent that any Product will conform to such model or sample.

NO OTHER WARRANTIES, EXPRESS OR IMPLIED, ARE GRANTED INCLUDING WITHOUT LIMITATION, IMPLIED WARRANTIES OF MERCHANTABILITY, FITNESS FOR ANY PARTICULAR PURPOSE, OR NON-INFRINGEMENT. BUYER'S EXCLUSIVE REMEDY FOR NON-CONFORMING PRODUCTS DURING THE WARRANTY PERIOD IS LIMITED TO REPAIR, REPLACEMENT OF OR REFUND FOR THE NON-CONFORMING PRODUCT(S) AT SELLER'S SOLE OPTION. THERE IS NO OBLIGATION TO REPAIR, REPLACE OR REFUND FOR PRODUCTS AS THE RESULT OF (i) ACCIDENT, DISASTER OR EVENT OF FORCE MAJEURE, (ii) MISUSE, FAULT OR NEGLIGENCE OF OR BY BUYER, (iii) USE OF THE PRODUCTS IN A MANNER FOR WHICH THEY WERE NOT DESIGNED, OR (iv) IMPROPER STORAGE AND HANDLING OF THE PRODUCTS. Unless otherwise expressly stated on the Product or in the documentation accompanying the Product, the Product is intended for research only and is not to be used for any other purpose, including without limitation, unauthorized commercial uses, in vitro diagnostic uses, ex vivo or in vivo therapeutic uses, or any type of consumption by or application to human or animals.

A16338 was used in flow cytometry to elucidate the roles of BAFF and APRIL in B cell development.

The Journal of experimental medicine (2001; 194: 1691)

"Maturation of marginal zone and follicular B cells requires B cell activating factor of the tumor necrosis factor family and is independent of B cell maturation antigen."

Author(s):Schneider P,Takatsuka H,Wilson A,Mackay F,Tardivel A,Lens S,Cachero TG,Finke D,Beermann F,Tschopp J
PubMed Article URL:<http://dx.doi.org/10.1084/jem.194.11.1691>

A16338 was used in flow cytometry to study the migration of T cell subsets in mice with autoimmune gastritis.

International immunology (1998; 10: 1325)

"Differential localization of Th1 and Th2 cells in autoimmune gastritis."

Author(s):Katakai T,Mori KJ,Masuda T,Shimizu A
PubMed Article URL:<http://dx.doi.org/10.1093/intimm/10.9.1325>

For Research Use Only. Not for use in diagnostic procedures. Not for resale without express authorization.

Products are warranted to operate or perform substantially in conformance with published Product specifications in effect at the time of sale, as set forth in the Production documentation, specifications and/or accompanying package inserts ("Documentation"). No claim of suitability for use in applications regulated by FDA is made. The warranty provided herein is valid only when used by properly trained individuals. Unless otherwise stated in the Documentation, this warranty is limited to one year from date of shipment when the Product is subjected to normal, proper and intended usage. This warranty does not extend to anyone other than the Buyer. Any model or sample furnished to Buyer is merely illustrative of the general type and quality of goods and does not represent that any Product will conform to such model or sample.

NO OTHER WARRANTIES, EXPRESS OR IMPLIED, ARE GRANTED INCLUDING WITHOUT LIMITATION, IMPLIED WARRANTIES OF MERCHANTABILITY, FITNESS FOR ANY PARTICULAR PURPOSE, OR NON-INFRINGEMENT. BUYER'S EXCLUSIVE REMEDY FOR NON-CONFORMING PRODUCTS DURING THE WARRANTY PERIOD IS LIMITED TO REPAIR, REPLACEMENT OF OR REFUND FOR THE NON-CONFORMING PRODUCT(S) AT SELLER'S SOLE OPTION. THERE IS NO OBLIGATION TO REPAIR, REPLACE OR REFUND FOR PRODUCTS AS THE RESULT OF (i) ACCIDENT, DISASTER OR EVENT OF FORCE MAJEURE, (ii) MISUSE, FAULT OR NEGLIGENCE OF OR BY BUYER, (iii) USE OF THE PRODUCTS IN A MANNER FOR WHICH THEY WERE NOT DESIGNED, OR (iv) IMPROPER STORAGE AND HANDLING OF THE PRODUCTS. Unless otherwise expressly stated on the Product or in the documentation accompanying the Product, the Product is intended for research only and is not to be used for any other purpose, including without limitation, unauthorized commercial uses, in vitro diagnostic uses, ex vivo or in vivo therapeutic uses, or any type of consumption by or application to human or animals.