

Calreticulin Monoclonal Antibody (FMC 75)

Catalog NumberMA1-91034

Product data sheet

Details		Species Reactivity	
Size	100 µg	Species reactivity	Hamster, Human, Non-human primate
Host/Isotope	Mouse / IgG1		
Class	Monoclonal	Tested Applications	
Type	Antibody	Flow Cytometry (Flow)	1:100
Clone	FMC 75	Immunohistochemistry (IHC)	2 µg/mL
Immunogen	Calreticulin-maltose binding fusion protein	Western Blot (WB)	0.5 µg/mL
Conjugate	Unconjugated	Immunocytochemistry (ICC/IF)	Assay-dependent
Form	Liquid	* Suggested working dilutions are given as a guide only. It is recommended that the user titrate the product for use in their own experiment using appropriate negative and positive controls.	
Concentration	1 mg/mL		
Purification	Protein G		
Storage buffer	PBS, pH 7.2, with 0.1mM PMSF, 50% glycerol		
Contains	no preservative		
Storage Conditions	Store at 4°C short term. For long term storage, store at -20°C, avoiding freeze/thaw cycles.		

Product specific information

Recommended positive controls: HeLa heat shocked cell lysate.

Background/Target Information

Calr or Calreticulin is a calcium-binding chaperone that promotes folding, oligomeric assembly and quality control in the endoplasmic reticulum (ER) via the calreticulin/calnexin cycle. Calr, a lectin, interacts transiently with almost all of the monoglucosylated glycoproteins that are synthesized in the ER. Calr also interacts with the DNA-binding domain of NR3C1 and mediates its nuclear export. It may also be involved in maternal gene expression regulation and oocyte maturation via the regulation of calcium homeostasis.

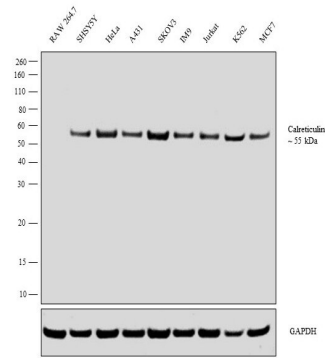
For Research Use Only. Not for use in diagnostic procedures. Not for resale without express authorization.

For Research Use Only. Not for use in diagnostic procedures. Not for resale without express authorization.

Products are warranted to operate or perform substantially in conformance with published Product specifications in effect at the time of sale, as set forth in the Production documentation, specifications and/or accompanying package inserts ("Documentation"). No claim of suitability for use in applications regulated by FDA is made. The warranty provided herein is valid only when used by properly trained individuals. Unless otherwise stated in the Documentation, this warranty is limited to one year from date of shipment when the Product is subjected to normal, proper and intended usage. This warranty does not extend to anyone other than the Buyer. Any model or sample furnished to Buyer is merely illustrative of the general type and quality of goods and does not represent that any Product will conform to such model or sample.

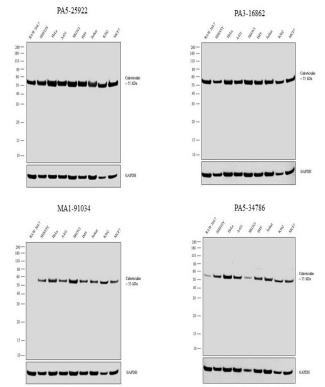
NO OTHER WARRANTIES, EXPRESS OR IMPLIED, ARE GRANTED INCLUDING WITHOUT LIMITATION, IMPLIED WARRANTIES OF MERCHANTABILITY, FITNESS FOR ANY PARTICULAR PURPOSE, OR NON-INFRINGEMENT. BUYER'S EXCLUSIVE REMEDY FOR NON-CONFORMING PRODUCTS DURING THE WARRANTY PERIOD IS LIMITED TO REPAIR, REPLACEMENT OF OR REFUND FOR THE NON-CONFORMING PRODUCT(S) AT SELLER'S SOLE OPTION. THERE IS NO OBLIGATION TO REPAIR, REPLACE OR REFUND FOR PRODUCTS AS THE RESULT OF (i) ACCIDENT, DISASTER OR EVENT OF FORCE MAJEURE, (ii) MISUSE, FAULT OR NEGLIGENCE OF OR BY BUYER, (iii) USE OF THE PRODUCTS IN A MANNER FOR WHICH THEY WERE NOT DESIGNED, OR (iv) IMPROPER STORAGE AND HANDLING OF THE PRODUCTS. Unless otherwise expressly stated on the Product or in the documentation accompanying the Product, the Product is intended for research only and is not to be used for any other purpose, including without limitation, unauthorized commercial uses, in vitro diagnostic uses, ex vivo or in vivo therapeutic uses, or any type of consumption by or application to human or animals.

Product Images For Calreticulin Monoclonal Antibody (FMC 75)



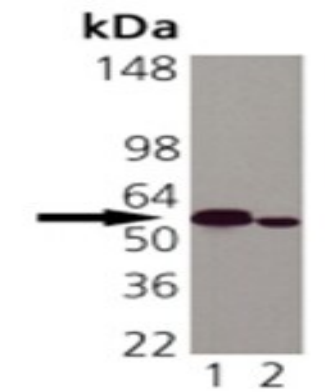
Calreticulin Antibody (MA1-91034) in WB

Western blot analysis was performed on whole cell extract (30 µg lysate) of RAW 264.7 (Lane 1), SHSY5Y (Lane 2), HeLa (Lane 3), A431 (Lane 4), SKOV3 (Lane 5), IM9 (Lane 6), Jurkat (Lane 7), K562 (Lane 8) and MCF7 (Lane 9). The blot was probed with Anti-Calreticulin Monoclonal Antibody (FMC 75) (Product # MA1-91034, 1:3000 dilution) and detected by chemiluminescence using Goat anti-Mouse IgG (H+L) Superclonal™ Secondary Antibody, HRP conjugate (Product # A28177, 0.25 µg/ml, 1:4000 dilution). A 55 kDa band corresponding to Calreticulin was observed in all human cell lines but no mouse reactivity was observed with RAW 264.7 cells.



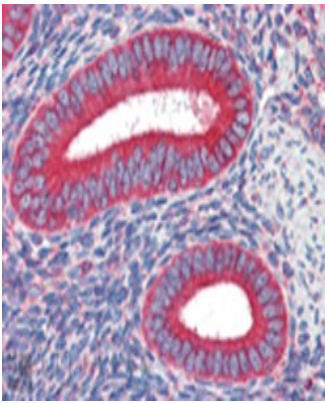
Calreticulin Antibody (MA1-91034)

Antibody specificity was demonstrated by showing that antibodies raised against the same target protein perform similarly. Western blot of Calreticulin using Calreticulin Monoclonal Antibody (FMC 75) (Product # MA1-91034), tested in parallel with Calreticulin Polyclonal Antibody (Product # PA3-16862), Calreticulin Polyclonal Antibody (Product # PA5-34786) and Calreticulin Polyclonal Antibody (Product # PA5-25922), shows similar expression of Calreticulin in the cell lines tested. {IAV}



Calreticulin Antibody (MA1-91034) in WB

Western blot analysis of Calreticulin using Calreticulin Monoclonal Antibody (FMC 75) (Product # MA1-91034): Lane 1: HeLa (Heat Shocked). Lane 2: Vero.



Calreticulin Antibody (MA1-91034) in IHC

Immunohistochemistry analysis of human uterus tissue stained with Calreticulin Monoclonal Antibody (FMC 75) (Product # MA1-91034) at 10 µg/mL.

For Research Use Only. Not for use in diagnostic procedures. Not for resale without express authorization.

Products are warranted to operate or perform substantially in conformance with published Product specifications in effect at the time of sale, as set forth in the Production documentation, specifications and/or accompanying package inserts ("Documentation"). No claim of suitability for use in applications regulated by FDA is made. The warranty provided herein is valid only when used by properly trained individuals. Unless otherwise stated in the Documentation, this warranty is limited to one year from date of shipment when the Product is subjected to normal, proper and intended usage. This warranty does not extend to anyone other than the Buyer. Any model or sample furnished to Buyer is merely illustrative of the general type and quality of goods and does not represent that any Product will conform to such model or sample.

NO OTHER WARRANTIES, EXPRESS OR IMPLIED, ARE GRANTED INCLUDING WITHOUT LIMITATION, IMPLIED WARRANTIES OF MERCHANTABILITY, FITNESS FOR ANY PARTICULAR PURPOSE, OR NON-INFRINGEMENT. BUYER'S EXCLUSIVE REMEDY FOR NON-CONFORMING PRODUCTS DURING THE WARRANTY PERIOD IS LIMITED TO REPAIR, REPLACEMENT OF OR REFUND FOR THE NON-CONFORMING PRODUCT(S) AT SELLER'S SOLE OPTION. THERE IS NO OBLIGATION TO REPAIR, REPLACE OR REFUND FOR PRODUCTS AS THE RESULT OF (i) ACCIDENT, DISASTER OR EVENT OF FORCE MAJEURE, (ii) MISUSE, FAULT OR NEGLIGENCE OF OR BY BUYER, (iii) USE OF THE PRODUCTS IN A MANNER FOR WHICH THEY WERE NOT DESIGNED, OR (iv) IMPROPER STORAGE AND HANDLING OF THE PRODUCTS. Unless otherwise expressly stated on the Product or in the documentation accompanying the Product, the Product is intended for research only and is not to be used for any other purpose, including without limitation, unauthorized commercial uses, in vitro diagnostic uses, ex vivo or in vivo therapeutic uses, or any type of consumption by or application to human or animals.