

HLA-ABC Monoclonal Antibody (W6/32), PE-Cyanine5, eBioscience™

Catalog Number 15-9983-41

Product data sheet

Details		Species Reactivity	
Size	25 Tests	Species reactivity	Human
Host/Isotope	Mouse / IgG2a, kappa	Published species	Human, Not Applicable
Class	Monoclonal	Tested Applications	
Type	Antibody	Flow Cytometry (Flow)	Dilution * 5 µL (0.25 µg)/test
Clone	W6/32	Published Applications	
Conjugate	PE-Cyanine5	Flow Cytometry (Flow)	See 4 publications below
Form	Liquid	Immunohistochemistry (Frozen) (IHC (F))	See 2 publications below
Concentration	5 µL/Test	* Suggested working dilutions are given as a guide only. It is recommended that the user titrate the product for use in their own experiment using appropriate negative and positive controls.	
Storage Conditions	4° C, store in dark, DO NOT FREEZE!		

Product specific information

Description: The W6/32 monoclonal antibody reacts with the human major histocompatibility complex (MHC) class I, HLA-A, B, C. MHC class I antigens associated with beta 2-microglobulin are expressed by all human nucleated cells and are central in cell-mediated immune response and tumor surveillance. W6/32 mAb recognizes a non-polymorphic epitope shared among products of the HLA-A, B, and C loci and immunoprecipitates both 43 kDa and 11-12 kDa chains. Crossreactivity is also seen in baboon, rhesus and cynomolgus monkey. Applications Reported: The W6/32 antibody has been reported for use in flow cytometric analysis. Applications Tested: This W6/32 antibody has been pre-titrated and tested by flow cytometric analysis of normal human peripheral blood cells. This can be used at 5 µL (0.25 µg) per test. A test is defined as the amount (µg) of antibody that will stain a cell sample in a final volume of 100 µL. Cell number should be determined empirically but can range from 10^5 to 10^8 cells/test. Light sensitivity: This tandem dye is sensitive photo-induced oxidation. Please protect this vial and stained samples from light. Fixation: Samples can be stored in IC Fixation Buffer (cat. 00-8222) (100 µL cell sample + 100 µL IC Fixation Buffer) or 1-step Fix/Lyse Solution (cat. 00-5333) for up to 3 days in the dark at 4°C with minimal impact on brightness and FRET efficiency/compensation. Some generalizations regarding fluorophore performance after fixation can be made, but clone specific performance should be determined empirically. Excitation: 488-561 nm; Emission: 667 nm; Laser: Blue Laser, Green Laser, Yellow-Green Laser. Filtration: 0.2 µm post-manufacturing filtered.

Background/Target Information

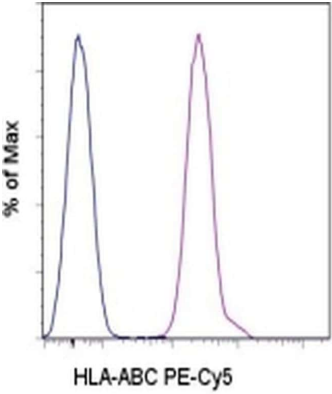
HLA-class I major histocompatibility (MHC) antigens are intrinsic membrane glycoproteins expressed on nucleated cells and noncovalently associated with an invariant beta2 microglobulin. They carry foreign determinants important for immune recognition by cytotoxic T cells, thus important for anti-viral and anti-tumor defense. Human HLA-class I antigens are represented by HLA-A, HLA-B and HLA-C molecules.

For Research Use Only. Not for use in diagnostic procedures. Not for resale without express authorization.

For Research Use Only. Not for use in diagnostic procedures. Not for resale without express authorization.

Products are warranted to operate or perform substantially in conformance with published Product specifications in effect at the time of sale, as set forth in the Production documentation, specifications and/or accompanying package inserts ("Documentation"). No claim of suitability for use in applications regulated by FDA is made. The warranty provided herein is valid only when used by properly trained individuals. Unless otherwise stated in the Documentation, this warranty is limited to one year from date of shipment when the Product is subjected to normal, proper and intended usage. This warranty does not extend to anyone other than the Buyer. Any model or sample furnished to Buyer is merely illustrative of the general type and quality of goods and does not represent that any Product will conform to such model or sample.

NO OTHER WARRANTIES, EXPRESS OR IMPLIED, ARE GRANTED INCLUDING WITHOUT LIMITATION, IMPLIED WARRANTIES OF MERCHANTABILITY, FITNESS FOR ANY PARTICULAR PURPOSE, OR NON-INFRINGEMENT. BUYER'S EXCLUSIVE REMEDY FOR NON-CONFORMING PRODUCTS DURING THE WARRANTY PERIOD IS LIMITED TO REPAIR, REPLACEMENT OF OR REFUND FOR THE NON-CONFORMING PRODUCT(S) AT SELLER'S SOLE OPTION. THERE IS NO OBLIGATION TO REPAIR, REPLACE OR REFUND FOR PRODUCTS AS THE RESULT OF (I) ACCIDENT, DISASTER OR EVENT OF FORCE MAJEURE, (II) MISUSE, FAULT OR NEGLIGENCE OF OR BY BUYER, (III) USE OF THE PRODUCTS IN A MANNER FOR WHICH THEY WERE NOT DESIGNED, OR (IV) IMPROPER STORAGE AND HANDLING OF THE PRODUCTS. Unless otherwise expressly stated on the Product or in the documentation accompanying the Product, the Product is intended for research only and is not to be used for any other purpose, including without limitation, unauthorized commercial uses, in vitro diagnostic uses, ex vivo or in vivo therapeutic uses, or any type of consumption by or application to human or animals.



HLA-ABC Antibody (15-9983-41) in Flow

Staining of normal human peripheral blood cells with Mouse IgG2a K Isotype Control PE-Cyanine5 (Product # 15-4724-81) (blue histogram) or Anti-Human HLA-ABC PE-Cyanine5 (purple histogram).Cells in the lymphocyte gate were used for analysis.

For Research Use Only. Not for use in diagnostic procedures. Not for resale without express authorization.

Products are warranted to operate or perform substantially in conformance with published Product specifications in effect at the time of sale, as set forth in the Production documentation, specifications and/or accompanying package inserts ("Documentation"). No claim of suitability for use in applications regulated by FDA is made. The warranty provided herein is valid only when used by properly trained individuals. Unless otherwise stated in the Documentation, this warranty is limited to one year from date of shipment when the Product is subjected to normal, proper and intended usage. This warranty does not extend to anyone other than the Buyer. Any model or sample furnished to Buyer is merely illustrative of the general type and quality of goods and does not represent that any Product will conform to such model or sample.

NO OTHER WARRANTIES, EXPRESS OR IMPLIED, ARE GRANTED INCLUDING WITHOUT LIMITATION, IMPLIED WARRANTIES OF MERCHANTABILITY, FITNESS FOR ANY PARTICULAR PURPOSE, OR NON-INFRINGEMENT. BUYER'S EXCLUSIVE REMEDY FOR NON-CONFORMING PRODUCTS DURING THE WARRANTY PERIOD IS LIMITED TO REPAIR, REPLACEMENT OF OR REFUND FOR THE NON-CONFORMING PRODUCT(S) AT SELLER'S SOLE OPTION. THERE IS NO OBLIGATION TO REPAIR, REPLACE OR REFUND FOR PRODUCTS AS THE RESULT OF (I) ACCIDENT, DISASTER OR EVENT OF FORCE MAJEURE, (II) MISUSE, FAULT OR NEGLIGENCE OF OR BY BUYER, (III) USE OF THE PRODUCTS IN A MANNER FOR WHICH THEY WERE NOT DESIGNED, OR (IV) IMPROPER STORAGE AND HANDLING OF THE PRODUCTS. Unless otherwise expressly stated on the Product or in the documentation accompanying the Product, the Product is intended for research only and is not to be used for any other purpose, including without limitation, unauthorized commercial uses, in vitro diagnostic uses, ex vivo or in vivo therapeutic uses, or any type of consumption by or application to human or animals.

PubMed References For HLA-ABC Monoclonal Antibody (W6/32), PE-Cyanine5, eBioscience™

4 Flow Cytometry References

Species / Dilution	Summary
Human / Not Cited	15-9983 was used in Flow cytometry experiments to provide a model of positive feedback conferred by ICOS-LICOS interaction between TGN1412-treated T cells and endothelial cells. Blood (2012; 119: 6268) "ICOS-LICOS interaction is critically involved in TGN1412-mediated T-cell activation." Author(s):Weissmüller S,Semmler LY,Kalinke U,Christians S,Müller-Berghaus J,Waibler Z PubMed Article URL:http://dx.doi.org/10.1182/blood-2011-12-401083
Human / Not Cited	15-9983 was used in Flow cytometry/Cell sorting to investigate the mechanism by which MHC1 and 1 integrin is downregulated by Ebola viral infection. PLoS pathogens (2010; 6:) "Steric shielding of surface epitopes and impaired immune recognition induced by the ebola virus glycoprotein." Author(s):Francica JR,Varela-Rohena A,Medvec A,Plesa G,Riley JL,Bates P PubMed Article URL:http://dx.doi.org/10.1371/journal.ppat.1001098
Human / Not Cited	15-9983 was used in Flow cytometry/Cell sorting to show that CD14(+) cells were the main targets of HIV-1 infection in the decidua. PloS one (2009; 4:) "Antigen-presenting cells represent targets for R5 HIV-1 infection in the first trimester pregnancy uterine mucosa." Author(s):Marlin R,Nugeyre MT,de Truchis C,Berkane N,Gervaise A,Barré-Sinoussi F,Menu E PubMed Article URL:http://dx.doi.org/10.1371/journal.pone.0005971
Human / Not Cited	15-9983 was used in Flow cytometry/Cell sorting to indicate AQ1 as a promising compound for the target therapy of c-KIT-dependent tumours, worth of further and in depth molecular investigations. Oncotarget (2016; 7: 21658) "Screening of candidate G-quadruplex ligands for the human c-KIT promotorial region and their effects in multiple in-vitro models." Author(s):Zorzan E,Da Ros S,Musetti C,Shahidian LZ,Coelho NF,Bonsembiante F,Létard S,Gelain ME,Palumbo M,Dubreuil P,Giantin M,Sissi C,Dacasto M PubMed Article URL:http://dx.doi.org/10.18632/oncotarget.7808

2 Immunohistochemistry (Frozen) References

Species / Dilution	Summary
Not Applicable / Not Cited	Human immunology (2004; 65: 1455) "High level of aneuploidy of chromosome 6 by FISH analysis of head and neck squamous cell carcinoma: limited applicability of LOH analysis to define HLA loss." Author(s):Koene GJ,Arts-Hilkes YH,van Dijk AJ,van der Ven KJ,Slootweg PJ,de Weger RA,Tilanus MG PubMed Article URL:http://dx.doi.org/10.1016/j.humimm.2004.06.012
Not Applicable / Not Cited	American journal of obstetrics and gynecology (2001; 185: 476) "A study of human leukocyte antigen G expression in hydatidiform moles." Author(s):Goldman-Wohl D,Ariel I,Greenfield C,Hochner-Celnikier D,Lavy Y,Yagel S PubMed Article URL:http://dx.doi.org/10.1067/mob.2001.115994