

SLC25A6 Polyclonal Antibody

Catalog NumberPA5-35113

Product data sheet

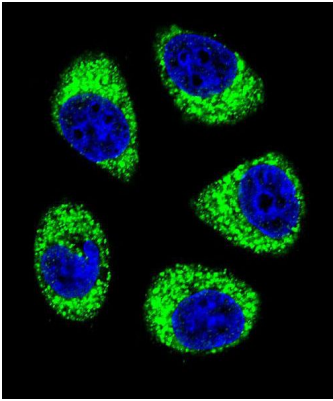
Details		Species Reactivity	
Size	400 µL	Species reactivity	Human
Host/Isotope	Rabbit / IgG	Published species	Not Applicable
Class	Polyclonal	Tested Applications	
Type	Antibody	Flow Cytometry (Flow)	Dilution *1:10-1:50
Immunogen	KLH conjugated synthetic peptide between 128-155 amino acids from the central region of human SLC25A6	Immunohistochemistry (Paraffin) (IHC (P))	1:10-1:50
		Western Blot (WB)	1:1,000
Conjugate	Unconjugated	Immunocytochemistry (ICC/IF)	1:10-1:50
Form	Liquid	* Suggested working dilutions are given as a guide only. It is recommended that the user titrate the product for use in their own experiment using appropriate negative and positive controls.	
Purification	Protein A, Antigen affinity chromatography		
Storage buffer	PBS		
Contains	0.09% sodium azide		
Storage Conditions	-20° C, Avoid Freeze/Thaw Cycles		

Background/Target Information

This gene is a member of the mitochondrial carrier subfamily of solute carrier protein genes. The product of this gene functions as a gated pore that translocates ADP from the mitochondrial matrix into the cytoplasm. The protein is implicated in the function of the permeability transition pore complex (PTPC), which regulates the release of mitochondrial products that induce apoptosis. The human genome contains several non-transcribed pseudogenes of this gene.

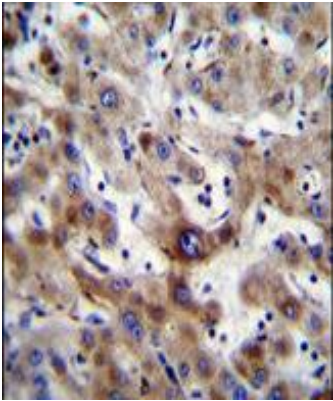
For Research Use Only. Not for use in diagnostic procedures. Not for resale without express authorization.

Product Images For SLC25A6 Polyclonal Antibody



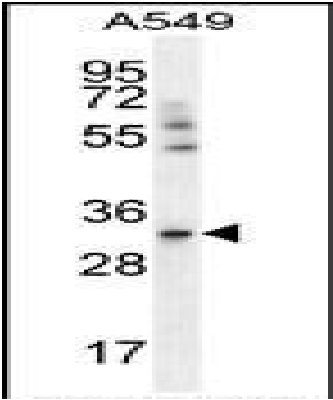
SLC25A6 Antibody (PA5-35113) in ICC/IF

Immunofluorescent analysis of SLC25A6 in A549 cells using a SLC25A6 polyclonal antibody (Product # PA5-35113) followed by detection using a fluorescent conjugated secondary antibody (green). Nuclei were stained with Dapi (blue).



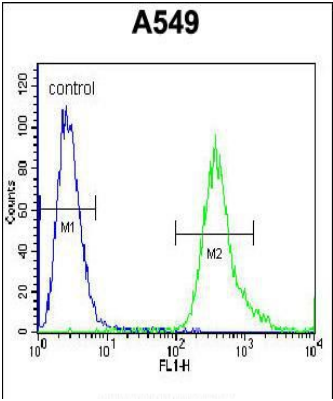
SLC25A6 Antibody (PA5-35113) in IHC (P)

Immunohistochemistry analysis of SLC25A6 in formalin-fixed, paraffin-embedded human liver tissue using a SLC25A6 polyclonal antibody (Product # PA5-35113) followed by peroxidase conjugation of the secondary antibody and DAB staining.



SLC25A6 Antibody (PA5-35113) in WB

Western blot analysis of SLC25A6 in A549 cell lysate (35 µg/lane) using a SLC25A6 polyclonal antibody (Product # PA5-35113).



SLC25A6 Antibody (PA5-35113) in Flow

Flow cytometry analysis of SLC25A6 in A549 cells (right) compared to a negative control (left) using a SLC25A6 polyclonal antibody (Product # PA5-35113) followed by detection using a FITC-conjugated goat-anti-rabbit secondary antibody.

For Research Use Only. Not for use in diagnostic procedures. Not for resale without express authorization.

Products are warranted to operate or perform substantially in conformance with published Product specifications in effect at the time of sale, as set forth in the Production documentation, specifications and/or accompanying package inserts ("Documentation"). No claim of suitability for use in applications regulated by FDA is made. The warranty provided herein is valid only when used by properly trained individuals. Unless otherwise stated in the Documentation, this warranty is limited to one year from date of shipment when the Product is subjected to normal, proper and intended usage. This warranty does not extend to anyone other than the Buyer. Any model or sample furnished to Buyer is merely illustrative of the general type and quality of goods and does not represent that any Product will conform to such model or sample.

NO OTHER WARRANTIES, EXPRESS OR IMPLIED, ARE GRANTED INCLUDING WITHOUT LIMITATION, IMPLIED WARRANTIES OF MERCHANTABILITY, FITNESS FOR ANY PARTICULAR PURPOSE, OR NON-INFRINGEMENT. BUYER'S EXCLUSIVE REMEDY FOR NON-CONFORMING PRODUCTS DURING THE WARRANTY PERIOD IS LIMITED TO REPAIR, REPLACEMENT OF OR REFUND FOR THE NON-CONFORMING PRODUCT(S) AT SELLER'S SOLE OPTION. THERE IS NO OBLIGATION TO REPAIR, REPLACE OR REFUND FOR PRODUCTS AS THE RESULT OF (i) ACCIDENT, DISASTER OR EVENT OF FORCE MAJEURE, (ii) MISUSE, FAULT OR NEGLIGENCE OF OR BY BUYER, (iii) USE OF THE PRODUCTS IN A MANNER FOR WHICH THEY WERE NOT DESIGNED, OR (iv) IMPROPER STORAGE AND HANDLING OF THE PRODUCTS. Unless otherwise expressly stated on the Product or in the documentation accompanying the Product, the Product is intended for research only and is not to be used for any other purpose, including without limitation, unauthorized commercial uses, in vitro diagnostic uses, ex vivo or in vivo therapeutic uses, or any type of consumption by or application to human or animals.