

SSTR3 Polyclonal Antibody

Catalog Number PA3-110

Product data sheet

Details		Species Reactivity	
Size	100 µL	Species reactivity	Human
Host/Isotope	Rabbit / IgG	Published species	Mouse, Human, Not Applicable
Class	Polyclonal	Tested Applications	
Type	Antibody	Immunohistochemistry (Paraffin) (IHC (P))	1:2500
Immunogen	Synthetic peptide corresponding to residues C Q(385) E R P P S R V A (393) of human SSTR3.	Western Blot (WB)	1:5,000
Conjugate	Unconjugated	Immunocytochemistry (ICC/IF)	1:5,000
Form	Liquid	Published Applications	
Concentration	Conc. Not Determined	Immunohistochemistry (IHC)	See 1 publications below
Storage buffer	whole serum	Western Blot (WB)	See 1 publications below
Contains	0.05% sodium azide	Miscellaneous PubMed (Misc)	See 2 publications below
Storage Conditions	-20° C, Avoid Freeze/Thaw Cycles	* Suggested working dilutions are given as a guide only. It is recommended that the user titrate the product for use in their own experiment using appropriate negative and positive controls.	

Product specific information

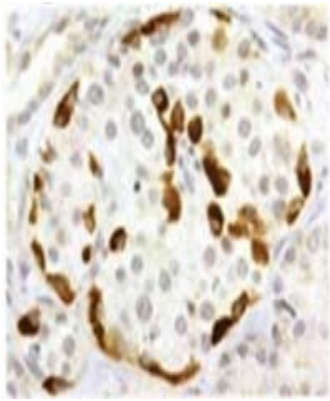
PA3-110 detects the Somatostatin Receptor 3 in human samples. PA3-110 has been used successfully in Western blot, immunocytochemistry, and immunohistochemistry procedures. In Western blot analysis of SSTR3 transfected HEK-293 cells this antibody detects a ~60-70 kDa protein representing SSTR3. The PA3-110 immunogen is a synthetic peptide corresponding to residues C Q(385) E R P P S R V A(393) of human SSTR3.

Background/Target Information

Expression of Somatostatin Receptor Type 3 (SSTR3) has been reported in brain, breast, eye, gastrointestinal tract, pancreas, and thyroid. G-protein Coupled Receptors (GPCRs) comprise one of the largest families of signaling molecules with more than a thousand members currently predicted to exist. All GPCRs share a structural motif consisting of seven membrane-spanning helices, and exist in both active and inactive forms. An array of activating ligands participate in the conformation of GPCRs which leads to signaling via G-proteins and downstream effectors. Ongoing studies have also shown the vast series of reactions which participate in the negative regulation of GPCRs. This "turn-off" activity has tremendous implications for the physiological action of the cell, and continues to drive pharmacological research for new drug candidates. Two blockbuster drugs which have been developed as GPCR-targeted pharmaceuticals are Zyprexa (Eli Lilly) and Claritin (Schering-Plough) which have multi-billion dollar shares of the mental health and allergy markets, respectively.

For Research Use Only. Not for use in diagnostic procedures. Not for resale without express authorization.

Product Images For SSTR3 Polyclonal Antibody



**SSTR3 Antibody (PA3-110) in IHC**  
Immunohistochemical staining of SSTR3 in human pancreatic islets using Product # PA3-110.

For Research Use Only. Not for use in diagnostic procedures. Not for resale without express authorization.

Products are warranted to operate or perform substantially in conformance with published Product specifications in effect at the time of sale, as set forth in the Production documentation, specifications and/or accompanying package inserts ("Documentation"). No claim of suitability for use in applications regulated by FDA is made. The warranty provided herein is valid only when used by properly trained individuals. Unless otherwise stated in the Documentation, this warranty is limited to one year from date of shipment when the Product is subjected to normal, proper and intended usage. This warranty does not extend to anyone other than the Buyer. Any model or sample furnished to Buyer is merely illustrative of the general type and quality of goods and does not represent that any Product will conform to such model or sample.

NO OTHER WARRANTIES, EXPRESS OR IMPLIED, ARE GRANTED INCLUDING WITHOUT LIMITATION, IMPLIED WARRANTIES OF MERCHANTABILITY, FITNESS FOR ANY PARTICULAR PURPOSE, OR NON-INFRINGEMENT. BUYER'S EXCLUSIVE REMEDY FOR NON-CONFORMING PRODUCTS DURING THE WARRANTY PERIOD IS LIMITED TO REPAIR, REPLACEMENT OF OR REFUND FOR THE NON-CONFORMING PRODUCT(S) AT SELLER'S SOLE OPTION. THERE IS NO OBLIGATION TO REPAIR, REPLACE OR REFUND FOR PRODUCTS AS THE RESULT OF (i) ACCIDENT, DISASTER OR EVENT OF FORCE MAJEURE; (ii) MISUSE, FAULT OR NEGLIGENCE OF OR BY BUYER; (iii) USE OF THE PRODUCTS IN A MANNER FOR WHICH THEY WERE NOT DESIGNED; OR (iv) IMPROPER STORAGE AND HANDLING OF THE PRODUCTS. Unless otherwise expressly stated on the Product or in the documentation accompanying the Product, the Product is intended for research only and is not to be used for any other purpose, including without limitation, unauthorized commercial uses, in vitro diagnostic uses, ex vivo or in vivo therapeutic uses, or any type of consumption by or application to human or animals.

## PubMed References For SSTR3 Polyclonal Antibody

### 1 Immunohistochemistry References

Species / Dilution	Summary
	PA3-110 was used in Immunohistochemistry to show that the cell-surface antigen Prominin-1 can be used to enrich precursor cells from the adult murine dentate gyrus.
Mouse / 1:500	The Journal of neuroscience : the official journal of the Society for Neuroscience ( 2013; 33: 3010) <b>"Prominin-1 allows prospective isolation of neural stem cells from the adult murine hippocampus."</b> Author(s):Walker TL,Wierick A,Sykes AM,Waldau B,Corbeil D,Carmeliet P,Kempermann G PubMed Article URL: <a href="http://dx.doi.org/10.1523/JNEUROSCI.3363-12.2013">http://dx.doi.org/10.1523/JNEUROSCI.3363-12.2013</a>

### 1 Western Blot References

Species / Dilution	Summary
	PA3-110 was used in Western Blotting to suggest that combined treatment with octreotide and cisplatin induces anaplastic thyroid cancer cell apoptosis and suppresses cell proliferation.
Human / 1:5000	Oncology letters ( 2018; 16: 4033) <b>"Combined effects of octreotide and cisplatin on the proliferation of side population cells from anaplastic thyroid cancer cell lines."</b> Author(s):Li Z,Jiang X,Chen P,Wu X,Duan A,Qin Y PubMed Article URL: <a href="http://dx.doi.org/10.3892/ol.2018.9105">http://dx.doi.org/10.3892/ol.2018.9105</a>

### 2 Miscellaneous PubMed References

Species / Dilution	Summary
	PA3-110 was used in immunohistochemistry and western blot to investigate the cellular distribution of five somatostatin receptor subtypes in human pheochromocytoma
Not Applicable / Not Cited	The Journal of clinical endocrinology and metabolism ( 2003; 88: 5150) <b>"Somatostatin receptor subtypes in human pheochromocytoma: subcellular expression pattern and functional relevance for octreotide scintigraphy."</b> Author(s):Mundschenk J,Unger N,Schulz S,Höhl V,Schulz S,Steinke R,Lehnert H PubMed Article URL: <a href="http://dx.doi.org/10.1210/jc.2003-030262">http://dx.doi.org/10.1210/jc.2003-030262</a>
	PA3-110 was used in immunohistochemistry and western blot to investigate the distribution of ssr1, 2A, 3, and 5 in neuroendocrine tumours
Not Applicable / Not Cited	Gut ( 2002; 50: 52) <b>"Identification of somatostatin receptor subtypes 1, 2A, 3, and 5 in neuroendocrine tumours with subtype specific antibodies."</b> Author(s):Kulaksiz H,Eissele R,Rössler D,Schulz S,Höhl V,Cetin Y,Arnold R PubMed Article URL: <a href="http://dx.doi.org/10.1136/gut.50.1.52">http://dx.doi.org/10.1136/gut.50.1.52</a>

For Research Use Only. Not for use in diagnostic procedures. Not for resale without express authorization.

Products are warranted to operate or perform substantially in conformance with published Product specifications in effect at the time of sale, as set forth in the Production documentation, specifications and/or accompanying package inserts ("Documentation"). No claim of suitability for use in applications regulated by FDA is made. The warranty provided herein is valid only when used by properly trained individuals. Unless otherwise stated in the Documentation, this warranty is limited to one year from date of shipment when the Product is subjected to normal, proper and intended usage. This warranty does not extend to anyone other than the Buyer. Any model or sample furnished to Buyer is merely illustrative of the general type and quality of goods and does not represent that any Product will conform to such model or sample.

NO OTHER WARRANTIES, EXPRESS OR IMPLIED, ARE GRANTED INCLUDING WITHOUT LIMITATION, IMPLIED WARRANTIES OF MERCHANTABILITY, FITNESS FOR ANY PARTICULAR PURPOSE, OR NON-INFRINGEMENT. BUYER'S EXCLUSIVE REMEDY FOR NON-CONFORMING PRODUCTS DURING THE WARRANTY PERIOD IS LIMITED TO REPAIR, REPLACEMENT OF OR REFUND FOR THE NON-CONFORMING PRODUCT(S) AT SELLER'S SOLE OPTION. THERE IS NO OBLIGATION TO REPAIR, REPLACE OR REFUND FOR PRODUCTS AS THE RESULT OF (i) ACCIDENT, DISASTER OR EVENT OF FORCE MAJEURE, (ii) MISUSE, FAULT OR NEGLIGENCE OF OR BY BUYER, (iii) USE OF THE PRODUCTS IN A MANNER FOR WHICH THEY WERE NOT DESIGNED, OR (iv) IMPROPER STORAGE AND HANDLING OF THE PRODUCTS. Unless otherwise expressly stated on the Product or in the documentation accompanying the Product, the Product is intended for research only and is not to be used for any other purpose, including without limitation, unauthorized commercial uses, in vitro diagnostic uses, ex vivo or in vivo therapeutic uses, or any type of consumption by or application to human or animals.